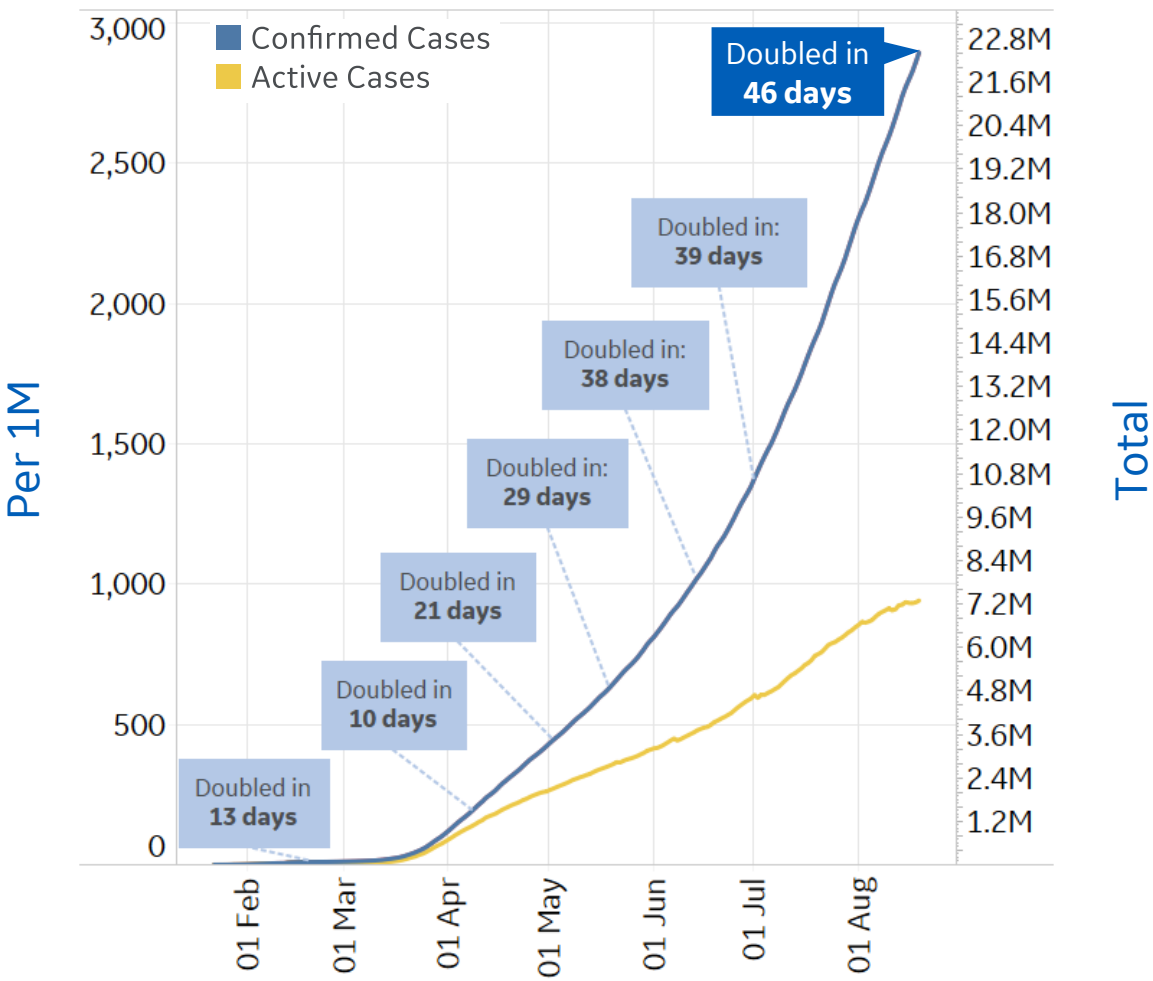




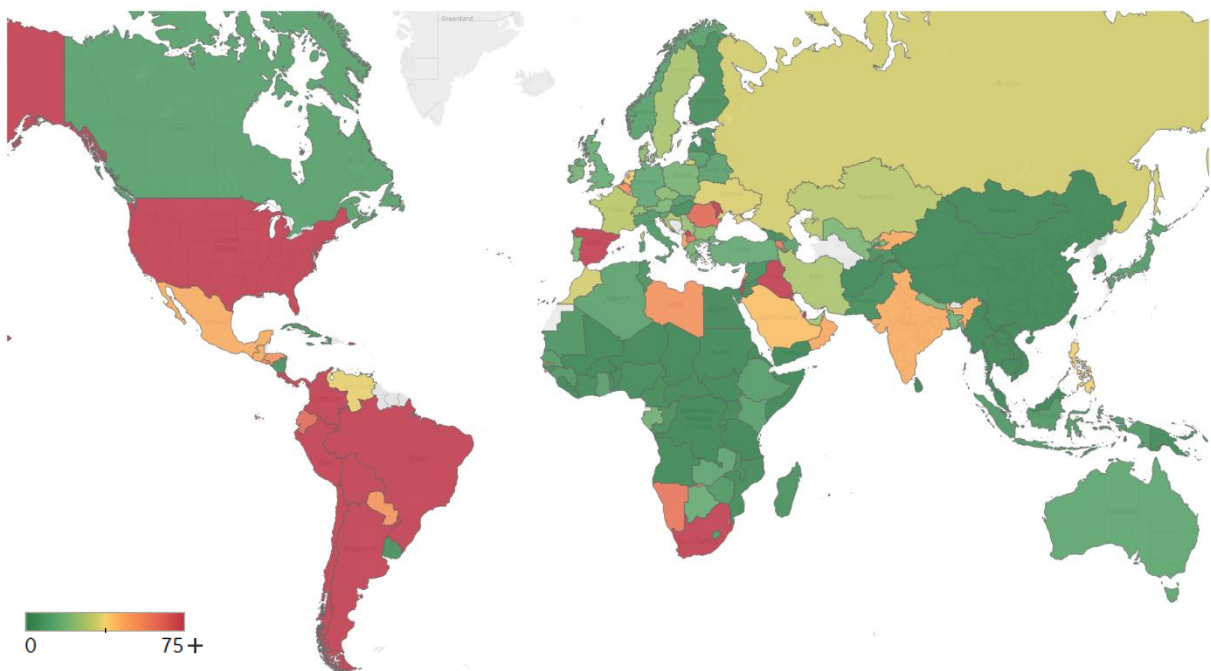
Global Confirmed & Active Cases

Trend since 22 Jan



Avg. Daily New Cases / 1M

Over the last 14 days



Per 1M:	Today		Change
Active Today	941		+0.7%
Active	6	new	+0.7%
Confirmed	35	new	+1%
Deaths	1	new	+1%
Recovered	29	new	+2%

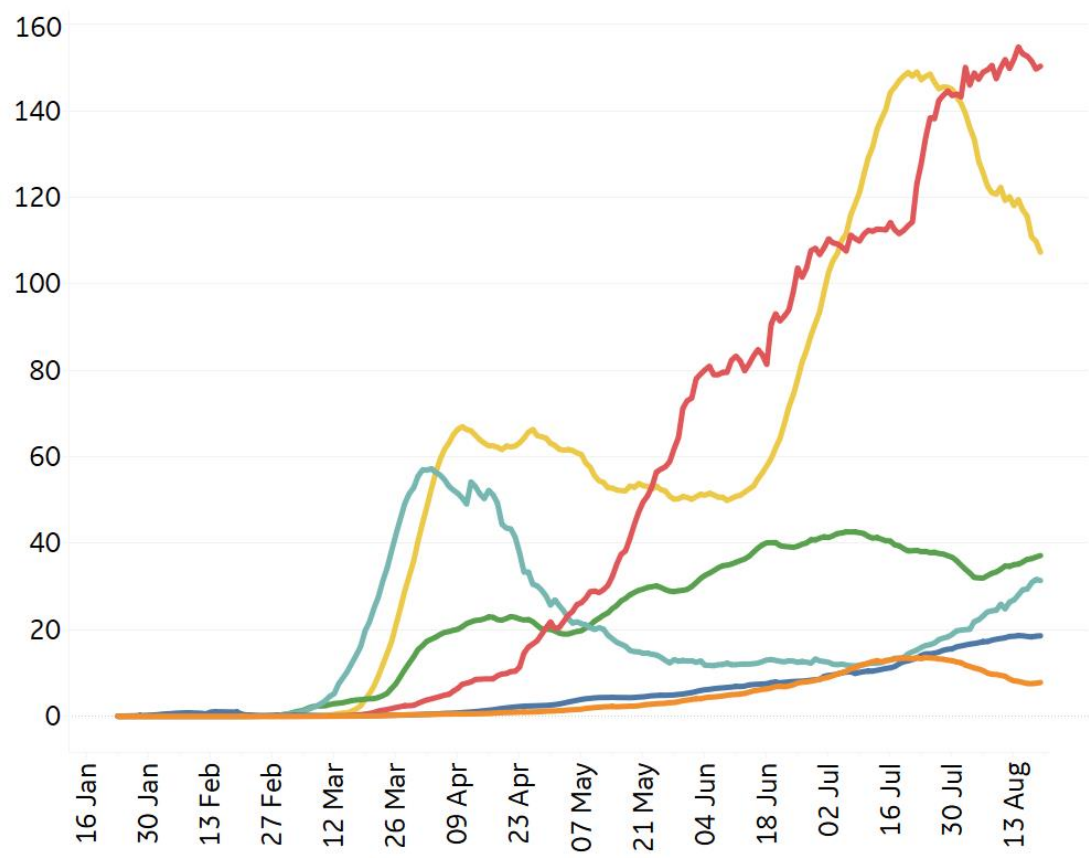


New Confirmed Cases & New Deaths

Key North America Europe Middle East Central/South America Asia Africa

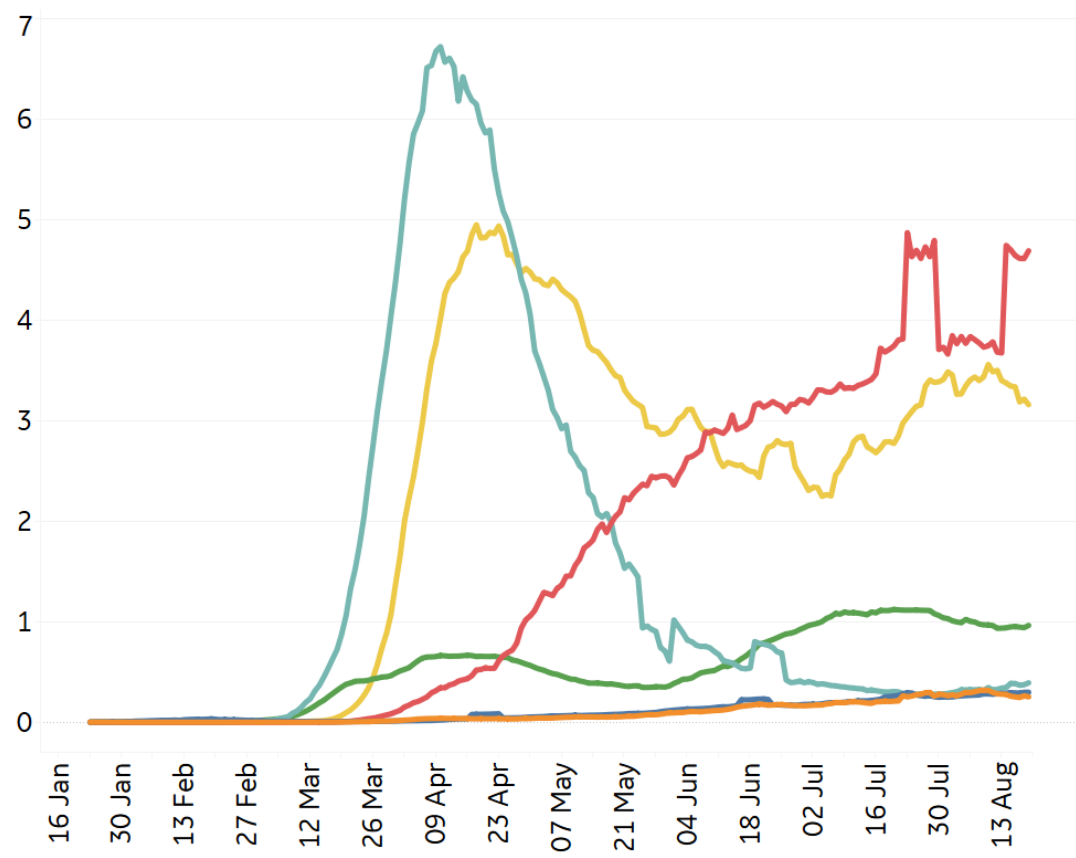
New Confirmed Cases / 1M

7-day rolling average



New Deaths / 1M

7-day rolling average





Top 50 Countries: Per 1M



1 - 25

	Today		Total Since 22 Jan			Change from 14d Ago [*] in 14 day avg of daily new	
	New Confirmed	New Deaths	Total Confirmed	Total Recovered	Total Deaths	Confirmed	Deaths
Belgium	50	1	6,858	1,560	860	27%	116%
Peru	237	5	16,660	11,448	809	25%	0%
Spain	143	3	7,932	3,216	616	70%	308%
UK	12	0	4,758	N/A*	611	30%	-18%
Italy	11	0	4,222	3,382	586	72%	133%
Sweden	19	1	8,457	N/A*	574	28%	-55%
Chile	62	2	20,403	19,056	553	-11%	-27%
US	143	4	16,706	5,816	523	-17%	-3%
Brazil	232	6	16,262	13,182	523	-5%	-4%
France	0	0	3,930	1,290	466	116%	12%
Mexico	45	5	4,165	3,400	454	-14%	3%
Panama	223	4	19,411	13,506	423	-6%	-27%
Bolivia	174	5	8,999	3,424	363	-5%	-20%
Netherlands	38	0	3,865	26	362	121%	107%
Ireland	10	0	5,579	4,732	359	157%	33%
Ecuador	87	2	5,922	4,947	348	34%	-30%
Colombia	257	7	9,869	6,413	314	23%	2%
EU	32	1	3,781	2,009	311	56%	47%
Armenia	71	0	14,193	11,888	281	-37%	-32%
North Macedo..	51	1	6,276	4,620	264	3%	-42%
Iran	29	2	4,170	3,602	240	-9%	-21%
Switzerland	36	0	4,479	3,871	231	39%	0%
Kyrgyzstan	27	0	6,487	5,395	230	-54%	-82%
Moldova	155	1	7,788	5,425	227	17%	-18%
Kosovo	0	0	6,256	3,979	211	-24%	-36%

26 - 50

	Today		Total Since 22 Jan			Change from 14d Ago [*] in 14 day avg of daily new	
	New Confirmed	New Deaths	Total Confirmed	Total Recovered	Total Deaths	Confirmed	Deaths
South Africa	66	3	10,050	8,286	209	-51%	-7%
Portugal	25	0	5,365	3,935	175	6%	21%
Honduras	63	2	5,280	794	162	-20%	-56%
Romania	73	2	3,827	1,745	161	4%	39%
Bos. and Herz.	104	4	5,087	3,265	155	-12%	15%
Iraq	102	2	4,694	3,341	152	36%	-2%
Argentina	148	6	6,918	5,061	140	17%	47%
Dom. Rep.	93	1	8,124	5,232	138	-36%	29%
Guatemala	58	3	3,621	2,979	138	-8%	-21%
Kuwait	158	0	18,298	16,338	119	6%	-24%
Oman	37	1	16,372	15,311	118	-62%	-17%
Russia	33	1	6,407	5,124	109	-9%	-15%
Bahrain	217	2	28,180	26,022	105	11%	0%
Saudi Arabia	39	1	8,694	7,873	101	-19%	16%
El Salvador	39	1	3,657	1,756	98	-12%	0%
Israel	180	8	11,319	8,445	90	-8%	60%
Kazakhstan	13	0	5,529	4,604	75	-62%	-25%
Qatar	102	0	40,248	39,103	67	6%	0%
Belarus	14	1	7,387	7,159	66	-23%	-30%
Costa Rica	150	1	5,969	1,896	63	24%	8%
UAE	44	0	6,607	5,866	37	-4%	27%
West Bank an..	66	1	3,853	2,257	26	24%	30%
Gabon	22	0	3,738	2,972	24	-56%	-50%
Singapore	16	0	9,577	9,027	5	-68%	N/A
Total World	35	1	2,893	1,851	102	0%	1%

*Change from 14d ago:
Compares 14d-avgs. of Daily New Cases/Deaths
today with 14d-avgs. from 14d ago

Daily New Cases in **Costa Rica** have increased 17% in the last 7 days

Sorted by Total Deaths / 1M
Top 50 countries selected by Cases / 1M
Excluded countries with population < 1M

N/A* due to inconsistent reporting of Recovered Cases



Top 50 Countries: Raw Volume

Updated 20 August 2020, 3:30 GMT

4

1 - 25

	Today		Total Since 22 Jan			Change from 14d Ago [*] in 14 day avg of daily new	
	New Confirmed	New Deaths	Total Confirmed	Total Recovered	Total Deaths	Confirmed	Deaths
US	47,408	1,356	5,529,824	1,925,049	173,177	-17%	-3%
EU	14,388	240	1,683,537	894,542	138,566	56%	47%
Brazil	49,298	1,212	3,456,652	2,801,931	111,100	-5%	-4%
Mexico	5,792	707	537,031	438,375	58,481	-14%	3%
India	69,672	978	2,836,925	2,096,664	53,866	20%	21%
UK	831	17	323,008	N/A*	41,483	30%	-18%
Italy	642	7	255,278	204,506	35,412	72%	133%
France	0	0	256,534	84,214	30,434	116%	12%
Spain	6,671	127	370,867	150,376	28,797	70%	308%
Peru	7,828	177	549,321	377,453	26,658	25%	0%
Iran	2,444	153	350,279	302,528	20,125	-9%	-21%
Colombia	13,056	360	502,178	326,298	15,979	23%	2%
Russia	4,790	115	935,066	747,802	15,951	-9%	-15%
South Africa	3,916	159	596,060	491,441	12,423	-51%	-7%
Chile	1,182	32	390,037	364,285	10,578	-11%	-27%
Belgium	582	10	79,479	18,078	9,969	27%	116%
Germany	1,586	8	229,706	204,454	9,249	59%	-9%
Canada	324	5	125,408	111,559	9,095	-14%	-12%
Indonesia	1,902	69	144,945	98,657	6,346	12%	-10%
Argentina	6,693	282	312,659	228,725	6,330	17%	47%
Netherlands	658	7	66,218	448	6,204	121%	107%
Pakistan	613	11	290,445	272,128	6,201	-22%	-39%
Ecuador	1,534	41	104,475	87,277	6,146	34%	-30%
Iraq	4,093	85	188,802	134,369	6,121	36%	-2%
Turkey	1,303	23	253,108	233,915	6,039	24%	7%

26 - 50

	Today		Total Since 22 Jan			Change from 14d Ago [*] in 14 day avg of daily new	
	New Confirmed	New Deaths	Total Confirmed	Total Recovered	Total Deaths	Confirmed	Deaths
Sweden	192	12	85,411	N/A*	5,802	28%	-55%
Egypt	161	13	96,914	62,553	5,197	-60%	-46%
China	33	1	89,527	83,566	4,706	-50%	0%
Bolivia	2,031	61	105,050	39,965	4,233	-5%	-20%
Bangladesh	2,747	41	285,091	165,738	3,781	15%	0%
Saudi Arabia	1,363	36	302,686	274,091	3,506	-19%	16%
Romania	1,409	32	73,617	33,566	3,106	4%	39%
Philippines	4,561	108	173,774	113,481	2,795	32%	140%
Guatemala	1,034	48	64,881	53,362	2,467	-8%	-21%
Ukraine	2,005	30	98,658	51,358	2,182	44%	42%
Poland	735	17	58,611	40,099	1,913	29%	38%
Panama	964	18	83,754	58,274	1,827	-6%	-27%
Portugal	253	2	54,701	40,129	1,786	6%	21%
Honduras	628	15	52,298	7,867	1,608	-20%	-56%
Dom. Rep.	1,004	12	88,127	56,760	1,501	-36%	29%
Kazakhstan	244	0	103,815	86,450	1,415	-62%	-25%
Japan	1,092	13	58,728	43,786	1,148	3%	216%
Israel	1,560	73	97,969	73,092	781	-8%	60%
Belarus	128	5	69,801	67,647	622	-23%	-30%
Oman	188	6	83,606	78,188	603	-62%	-17%
Kuwait	675	2	78,145	69,771	507	6%	-24%
UAE	435	1	65,341	58,022	367	-4%	27%
Qatar	295	0	115,956	112,658	193	6%	0%
Singapore	93	0	56,031	52,810	27	-68%	N/A
Total World	274,346	6,764	22,411,300	14,333,914	787,672	0%	1%

*Change from 14d ago:
Compares 14d-avgs. of Daily New Cases/Deaths
today with 14d-avgs. from 14d ago

Reported Deaths in **Israel** grew 14% in the last 3 days

Sorted by Raw Total Deaths
Top 50countries selected by Total Cases
Excluded countries with population < 1M

N/A* due to inconsistent reporting of Recovered Cases



United States: Per 1M



1 - 26

	Today		Total Since 22 Jan			Change from 14d Ago [*] in 14 day avg of daily new	
	New Confirmed	New Deaths	Total Confirmed	Total Recovered	Total Deaths	Confirmed	Deaths
New Jersey	74	1	21,214	3,766	1,793	-4%	-49%
New York	66	1	21,960	3,821	1,689	3%	-29%
Massachusetts	83	5	18,051	14,828	1,288	-2%	15%
Connecticut	13	0	14,393	2,471	1,250	-40%	-35%
Louisiana	305	18	30,094	25,409	991	-42%	4%
Rhode Island	211	4	19,630	1,900	969	-1%	7%
DC	115	4	18,922	15,014	850	5%	86%
Mississippi	720	23	25,051	19,010	727	-25%	8%
Michigan	134	3	10,423	6,787	663	7%	63%
Arizona	213	18	26,867	3,879	637	-52%	-18%
Illinois	318	4	16,826	N/A	633	28%	20%
Delaware	110	2	17,091	9,017	611	0%	-87%
Maryland	154	3	16,813	997	606	-20%	0%
Pennsylvania	98	4	10,225	7,784	586	-9%	47%
Indiana	198	7	12,230	9,281	472	16%	28%
Florida	370	18	27,193	N/A	462	-30%	11%
S. Carolina	283	14	21,056	8,780	458	-30%	-16%
Georgia	482	11	22,979	N/A	457	-7%	43%
Alabama	505	4	22,736	8,469	396	-22%	-16%
Texas	466	17	19,818	14,646	377	-4%	12%
Nevada	344	19	20,463	500	368	-23%	46%
New Mexico	119	5	11,326	5,235	348	-36%	-7%
Ohio	156	6	9,486	7,737	334	-10%	-7%
Colorado	92	1	9,357	995	330	-24%	-36%
Iowa	220	7	16,964	13,260	320	10%	42%
Minnesota	160	5	11,812	10,682	316	-4%	59%

27 - 51

	Today		Total Since 22 Jan			Change from 14d Ago [*] in 14 day avg of daily new	
	New Confirmed	New Deaths	Total Confirmed	Total Recovered	Total Deaths	Confirmed	Deaths
Minnesota	160	5	11,812	10,682	316	-4%	59%
New Hampshire	24	3	5,175	4,668	314	-19%	-44%
California	452	10	16,382	N/A	296	10%	14%
Virginia	187	3	12,772	1,639	282	1%	-26%
Washington	127	5	9,020	N/A	239	-14%	30%
Missouri	336	3	11,615	N/A	234	-12%	4%
N. Carolina	230	8	14,104	12,180	232	-21%	5%
Tennessee	447	10	20,178	14,509	213	-15%	31%
Arkansas	377	9	17,965	15,795	209	-20%	10%
Nebraska	247	5	16,046	11,786	192	-4%	34%
Kentucky	276	5	9,160	2,089	188	6%	21%
Wisconsin	223	4	11,592	10,003	182	-5%	-6%
Oklahoma	306	9	12,616	10,626	177	-16%	22%
South Dakota	233	2	11,944	10,387	175	36%	6%
North Dakota	421	5	11,768	10,011	171	20%	92%
Idaho	416	9	16,049	6,377	162	1%	-4%
Kansas	276	3	12,158	505	142	15%	-8%
Utah	196	4	14,823	12,128	118	-17%	-16%
Oregon	99	5	5,659	1,059	97	-9%	12%
Maine	28	0	3,151	2,724	94	-5%	-33%
Vermont	10	0	2,457	2,170	93	46%	0%
West Virginia	93	3	4,914	3,855	93	-10%	83%
Montana	153	2	5,573	4,077	79	2%	-13%
Wyoming	173	7	5,928	4,814	59	-14%	250%
Alaska	176	1	6,067	2,052	40	-21%	-33%
Hawaii	278	1	3,962	1,396	30	127%	650%

^{*}Change from 14d ago:
Compares 14d-avgs. of Daily New Cases/Deaths
today with 14d-avgs. from 14d ago

California and **Texas** account for 35% of New Confirmed Cases in the US today

Sorted by Total Deaths / 1M
N/As and negative deaths are due to states
revising and updating case counts



United States: Raw Volume



1 - 26

	Today		Total Since 22 Jan			Change from 14d Ago* in 14 day avg of daily new	
	New Confirmed	New Deaths	Total Confirmed	Total Recovered	Total Deaths	Confirmed	Deaths
New York	1,286	19	427,202	74,328	32,865	3%	-29%
New Jersey	660	10	188,427	33,451	15,926	-4%	-49%
California	17,859	394	647,274	N/A	11,690	10%	14%
Texas	13,523	487	574,633	424,685	10,934	-4%	12%
Florida	7,953	393	584,047	N/A	9,932	-30%	11%
Massachusetts	574	34	124,415	102,205	8,876	-2%	15%
Illinois	4,035	50	213,220	N/A	8,017	28%	20%
Pennsylvania	1,258	55	130,905	99,657	7,508	-9%	47%
Michigan	1,342	26	104,091	67,778	6,618	7%	63%
Georgia	5,121	122	243,982	N/A	4,849	-7%	43%
Arizona	1,552	128	195,557	28,233	4,634	-52%	-18%
Louisiana	1,418	83	139,903	118,120	4,609	-42%	4%
Connecticut	N/A	1	51,314	8,809	4,457	-40%	-35%
Ohio	1,819	75	110,881	90,436	3,907	-10%	-7%
Maryland	934	20	101,649	6,030	3,661	-20%	0%
Indiana	1,330	45	82,336	62,483	3,180	16%	28%
N. Carolina	2,409	83	147,925	127,749	2,431	-21%	5%
Virginia	1,598	25	109,019	13,989	2,410	1%	-26%
S. Carolina	1,458	72	108,411	45,205	2,360	-30%	-16%
Mississippi	2,143	68	74,555	56,577	2,163	-25%	8%
Alabama	2,474	19	111,478	41,523	1,944	-22%	-16%
Colorado	531	4	53,882	5,729	1,900	-24%	-36%
Washington	968	37	68,689	N/A	1,822	-14%	30%
Minnesota	902	26	66,618	60,242	1,784	-4%	59%
Tennessee	3,056	65	137,800	99,085	1,452	-15%	31%

27 - 51

	Today		Total Since 22 Jan			Change from 14d Ago* in 14 day avg of daily new	
	New Confirmed	New Deaths	Total Confirmed	Total Recovered	Total Deaths	Confirmed	Deaths
Missouri	2,060	19	71,285	N/A	1,434	-12%	4%
Nevada	1,061	57	63,028	1,540	1,134	-23%	46%
Wisconsin	1,297	21	67,493	58,244	1,060	-5%	-6%
Rhode Island	223	4	20,795	2,013	1,027	-1%	7%
Iowa	694	23	53,523	41,837	1,010	10%	42%
Kentucky	1,235	24	40,926	9,331	842	6%	21%
New Mexico	249	11	23,749	10,976	729	-36%	-7%
Oklahoma	1,212	34	49,923	42,047	699	-16%	22%
Arkansas	1,139	28	54,216	47,666	631	-20%	10%
DC	81	3	13,354	10,596	600	5%	86%
Delaware	107	2	16,643	8,780	595	0%	-87%
New Hampshire	32	4	7,036	6,347	427	-19%	-44%
Kansas	805	9	35,419	1,472	415	15%	-8%
Oregon	419	20	23,870	4,468	408	-9%	12%
Utah	627	13	47,521	38,883	377	-17%	-16%
Nebraska	N/A	9	31,040	22,798	371	-4%	34%
Idaho	743	16	28,680	11,397	289	1%	-4%
West Virginia	166	6	8,807	6,909	166	-10%	83%
South Dakota	206	2	10,566	9,189	155	36%	6%
North Dakota	321	4	8,968	7,629	130	20%	92%
Maine	38	0	4,235	3,662	127	-5%	-33%
Montana	164	2	5,956	4,357	84	2%	-13%
Vermont	6	0	1,533	1,354	58	46%	0%
Hawaii	394	2	5,609	1,977	42	127%	650%
Wyoming	100	4	3,431	2,786	34	-14%	250%
Alaska	129	1	4,438	1,501	29	-21%	-33%

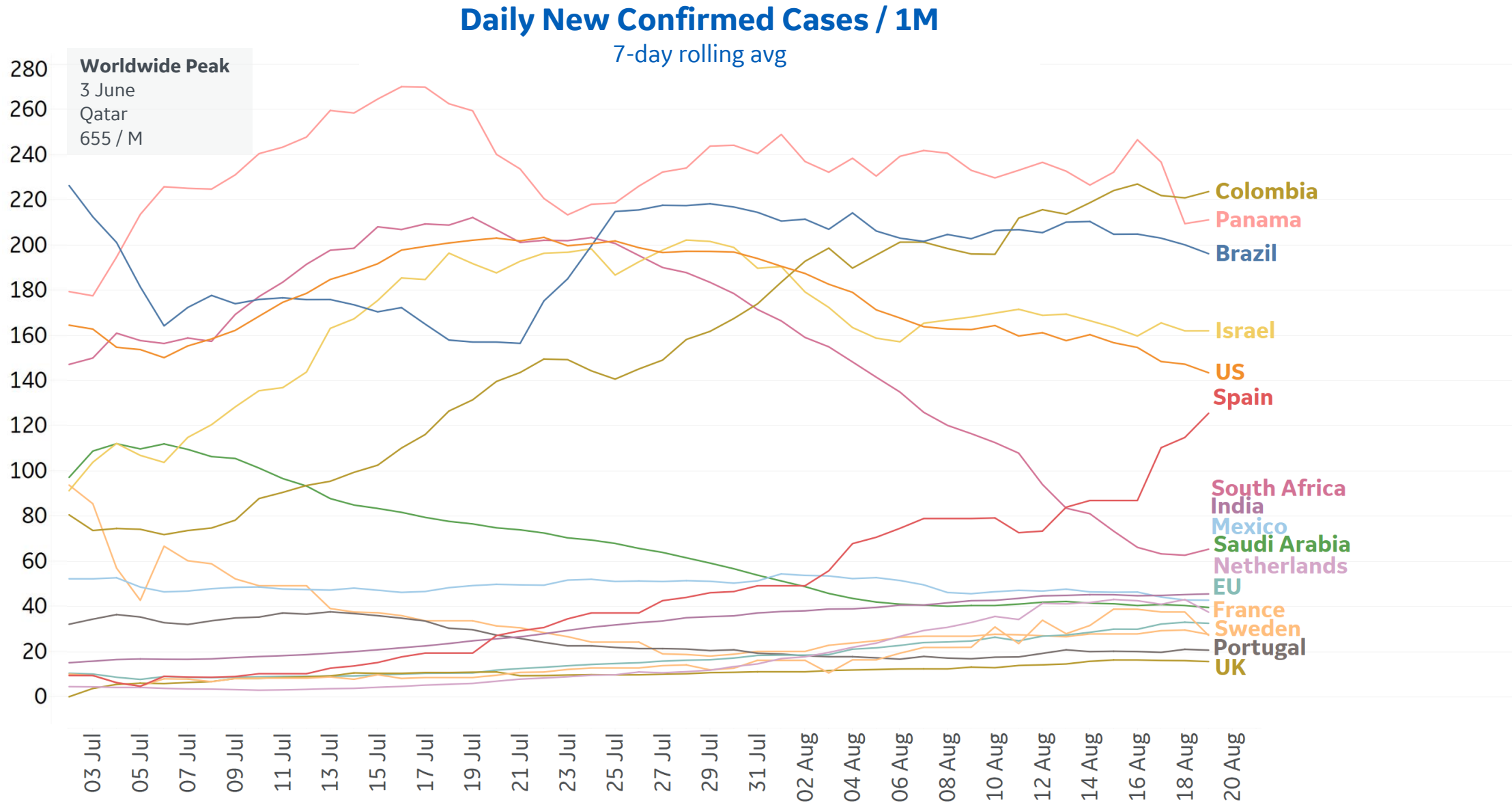
*Change from 14d ago:
Compares 14d-avgs. of Daily New Cases/Deaths
today with 14d-avgs. from 14d ago

Total deaths in **Florida, Texas, and California** are nearly equal to deaths in **New York**

Sorted by Raw Total Deaths
N/As and negative deaths are due to states
revising and updating case counts

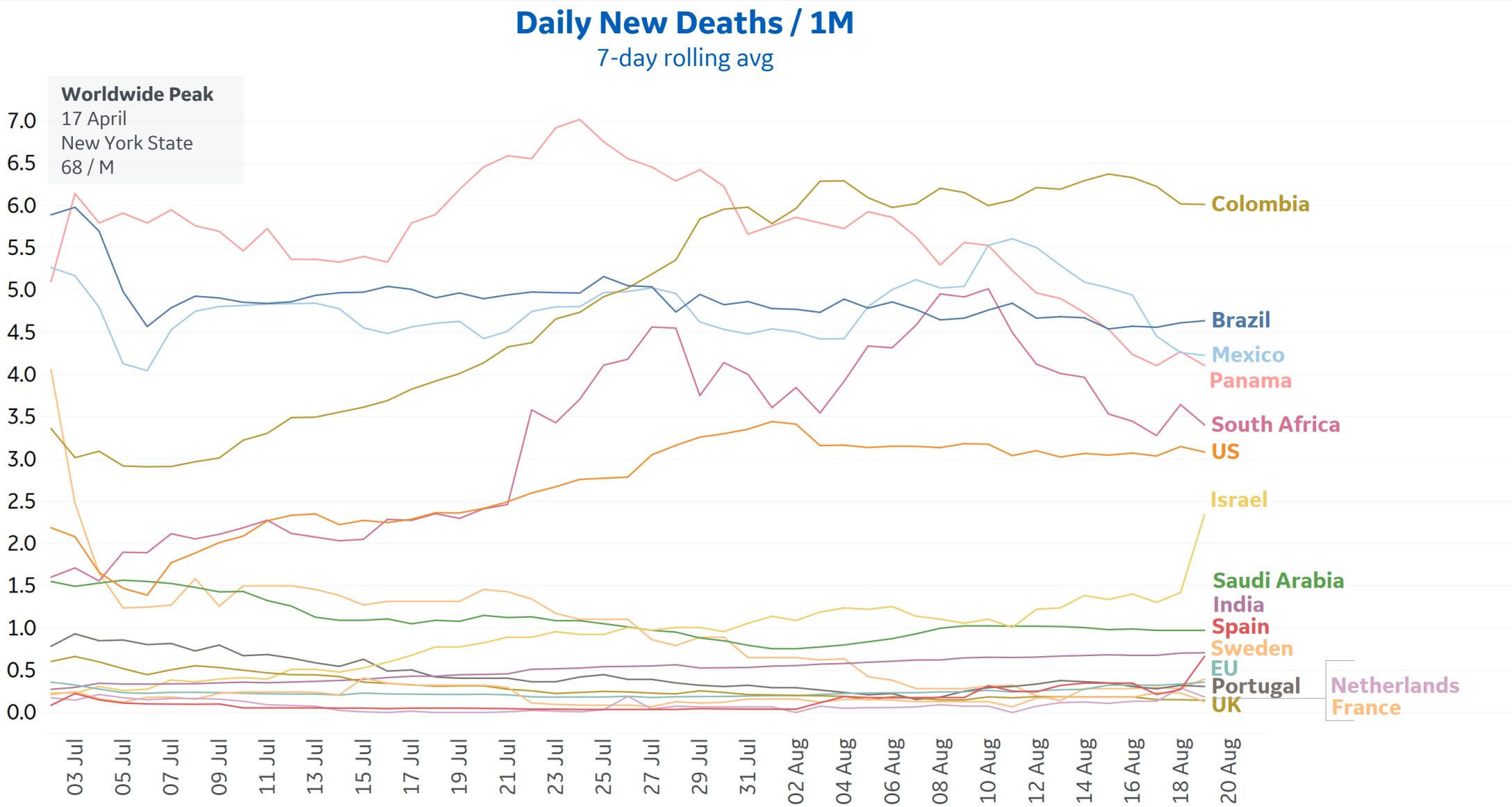


New Confirmed Cases in Select Countries





New Deaths in Select Countries

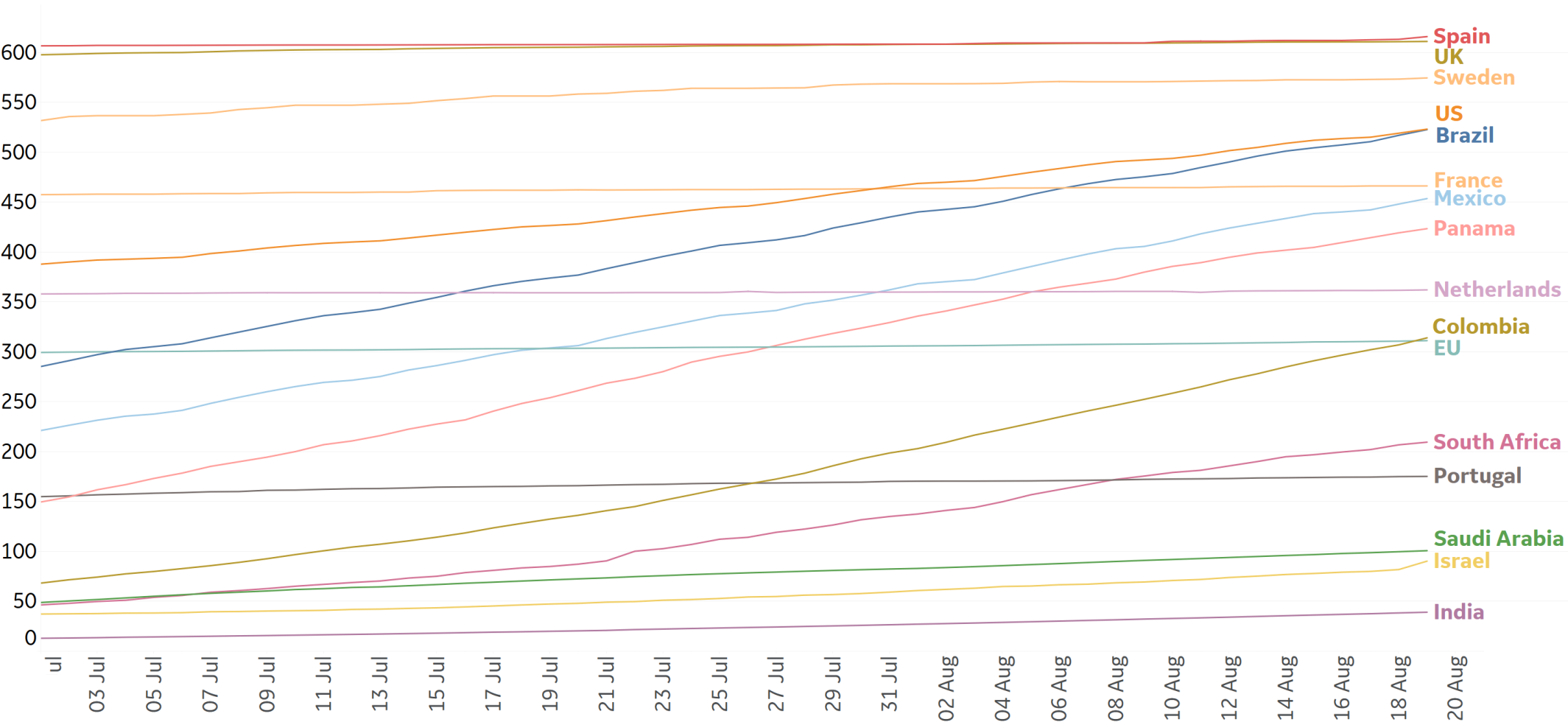




Cumulative Deaths in Select Countries

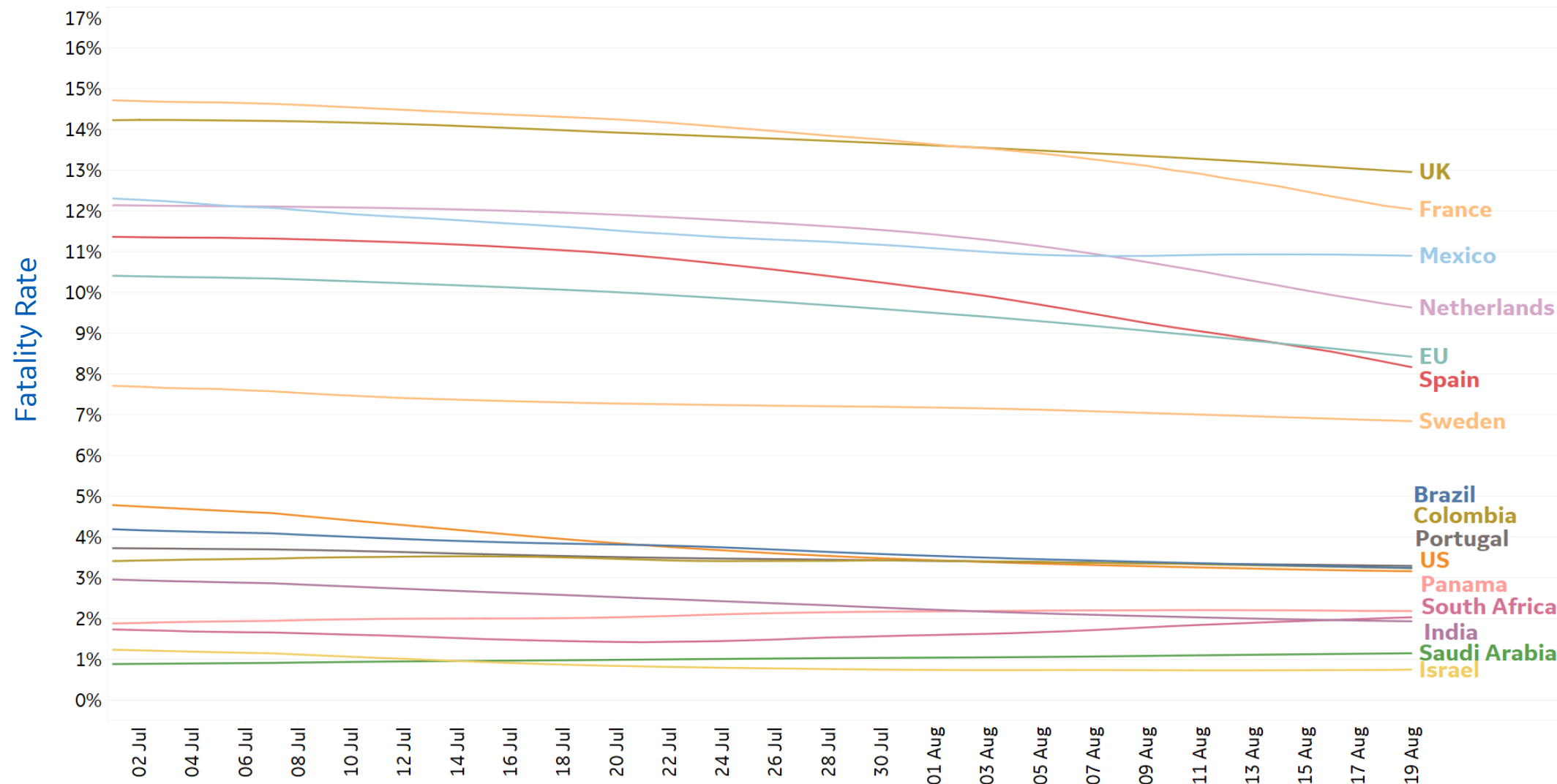
Updated 20 August 2020, 3:30 GMT

Cumulative Deaths / 1M





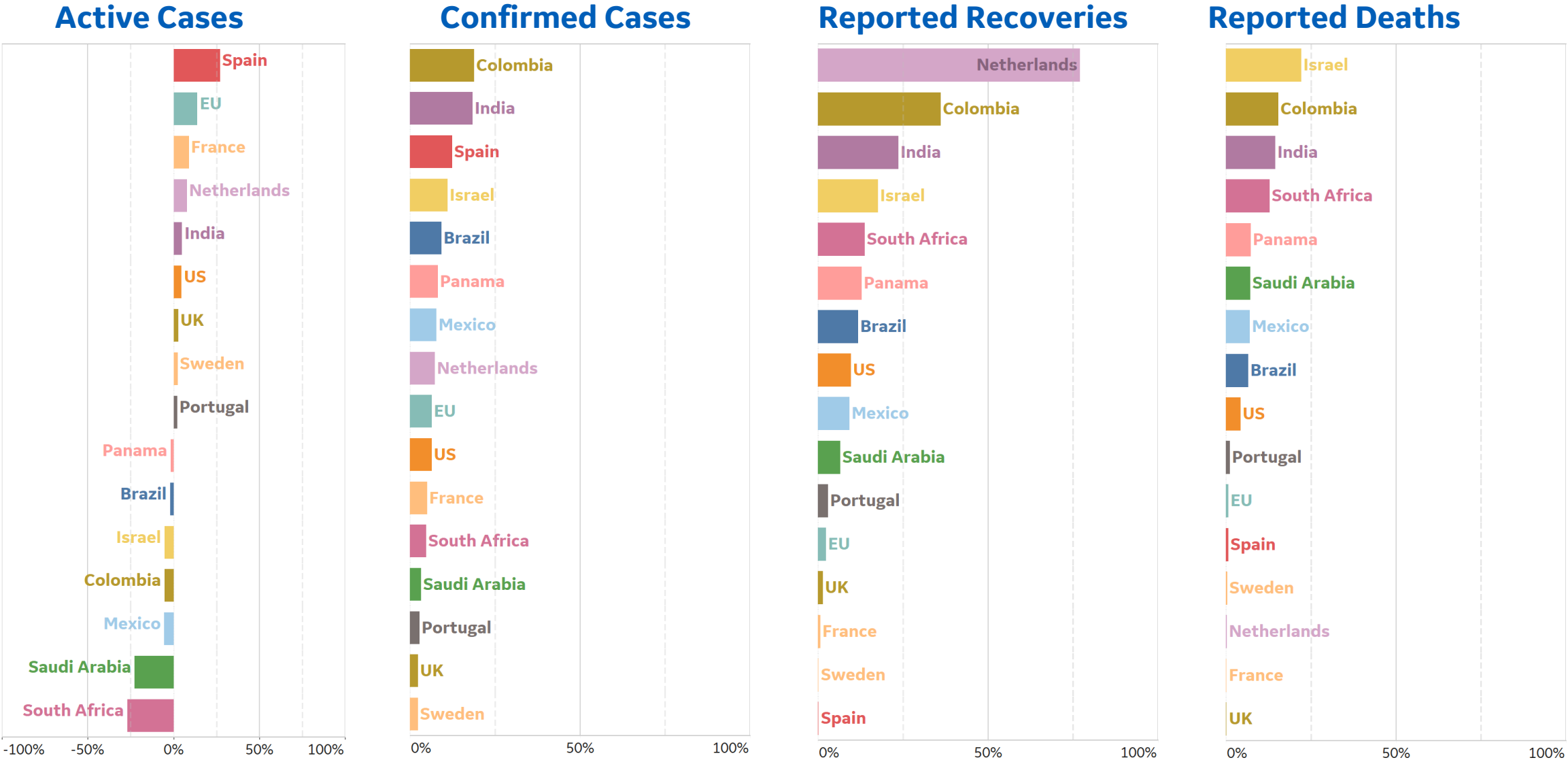
7-day rolling avg





% Change in Case Volume in Select Countries

Over Previous 7 days





Feature: All Cause Mortality in US



Data Source Highlights

In the following pages, we use CDC data from 2015 – 2019 through the National Center for Health Statistics.

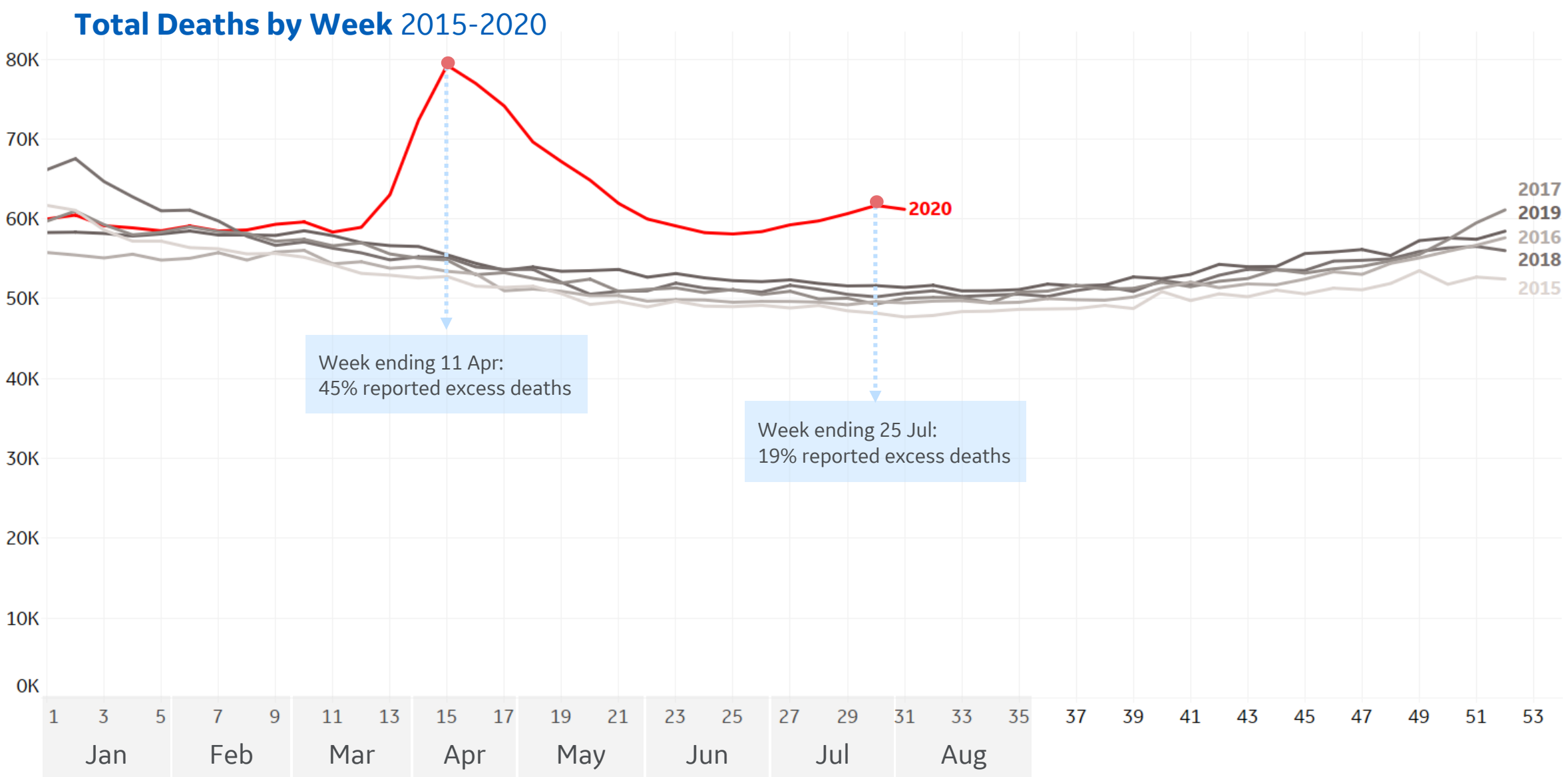
- *Number of deaths reported in these tables are the total number of deaths received and coded as of the date of analysis and may not represent all deaths that occurred in that period.*
- *Data for 2020 is provisional and may be incomplete because of the lag in time between when the death occurred and when the death certificate is completed, submitted to NCHS and processed for reporting purposes.*

For data in 2020, we use Weekly Counts of Death by Jurisdiction and Age Group. Per the CDC:

- **Provisional counts are not final and are subject to change.** *Counts from previous weeks are continually revised as additional records are received and processed.*
- **Provisional data are not yet complete.** *Counts may not include all deaths that occurred during a given time period, especially for more recent periods. However, we can estimate how complete our numbers are by looking at the average number of deaths reported in previous years.*
- **Death counts should not be compared across jurisdictions.** *Some jurisdictions report deaths on a daily basis, while others report deaths weekly or monthly. In addition, vital record reporting may also be affected or delayed by COVID-19 related response activities.*



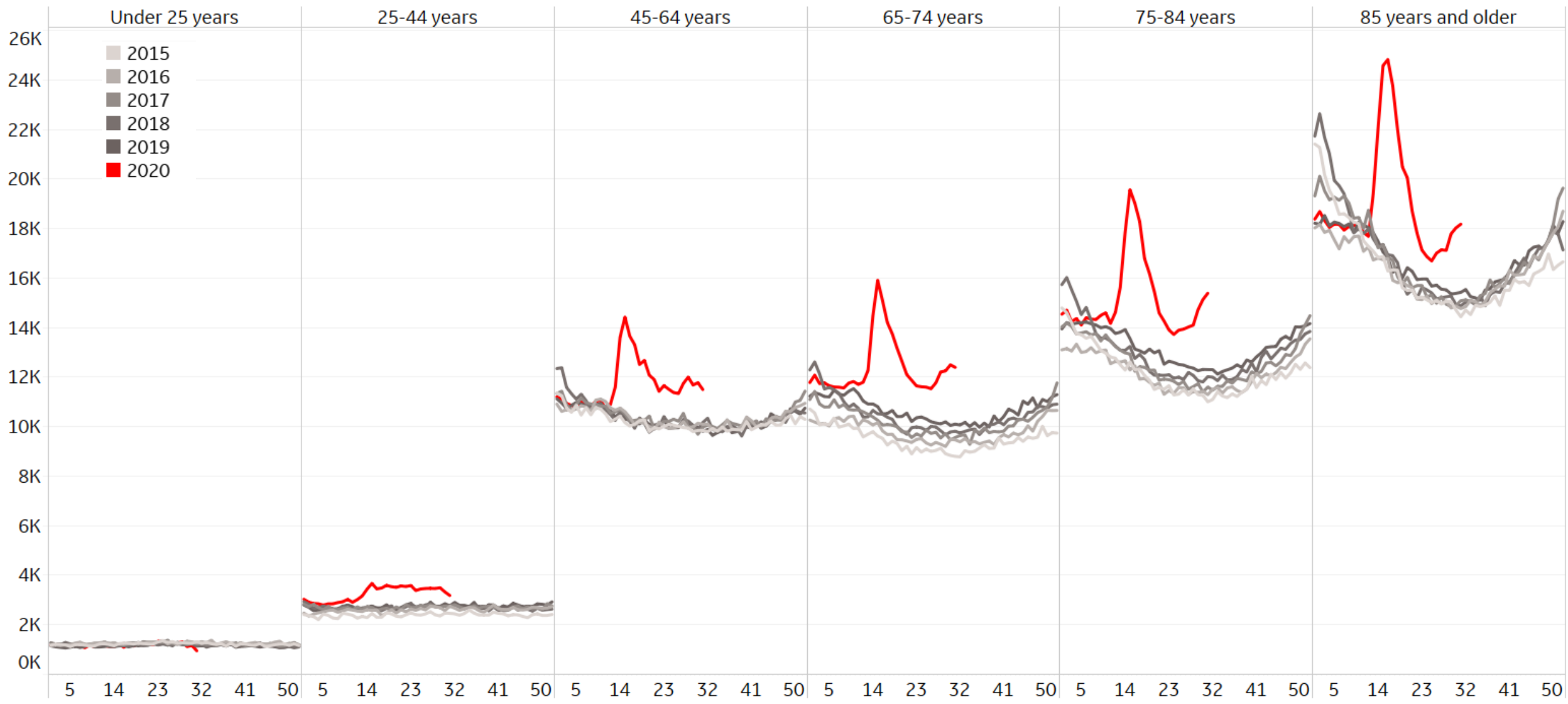
Feature: US All Cause Mortality





Feature: US All Cause Mortality by Age Group

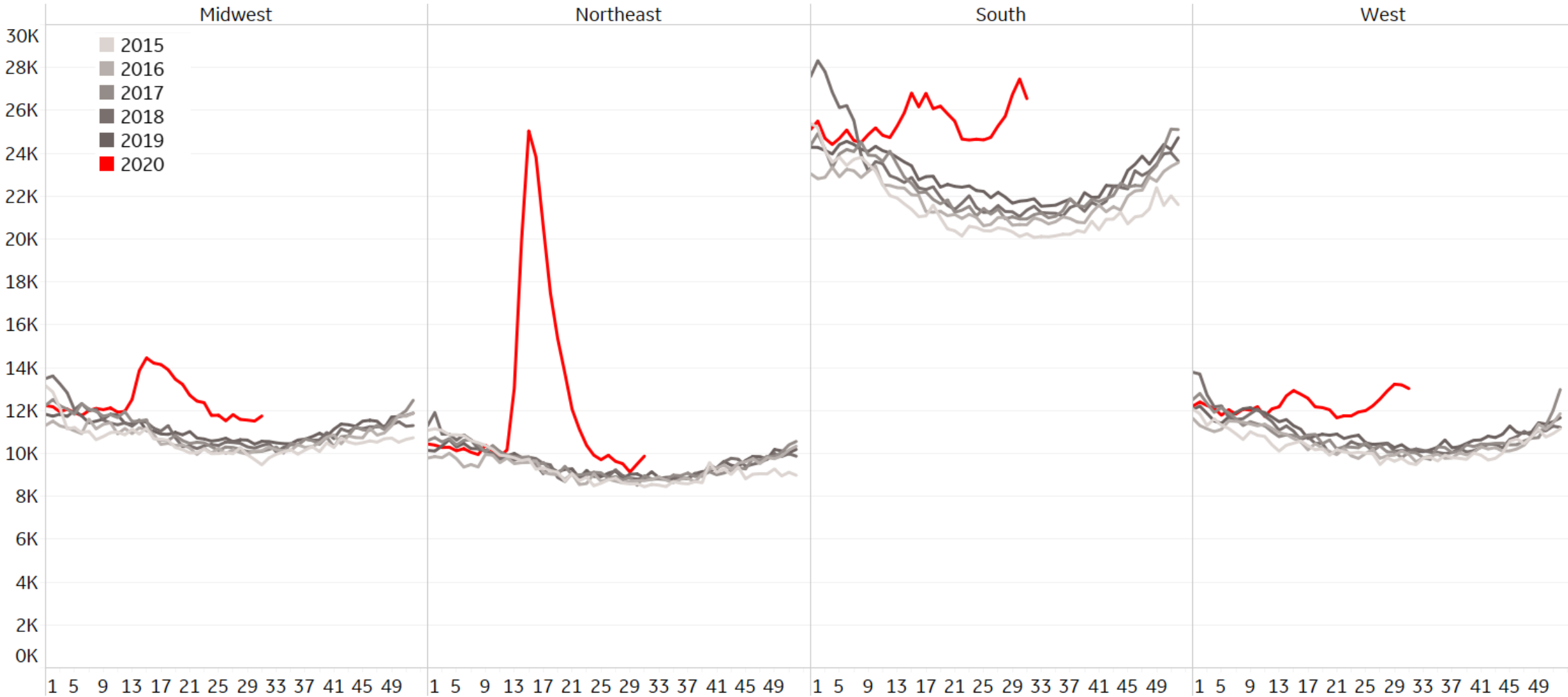
Total Deaths by Week 2015-2020





Feature: US All Cause Mortality per Statistical Region

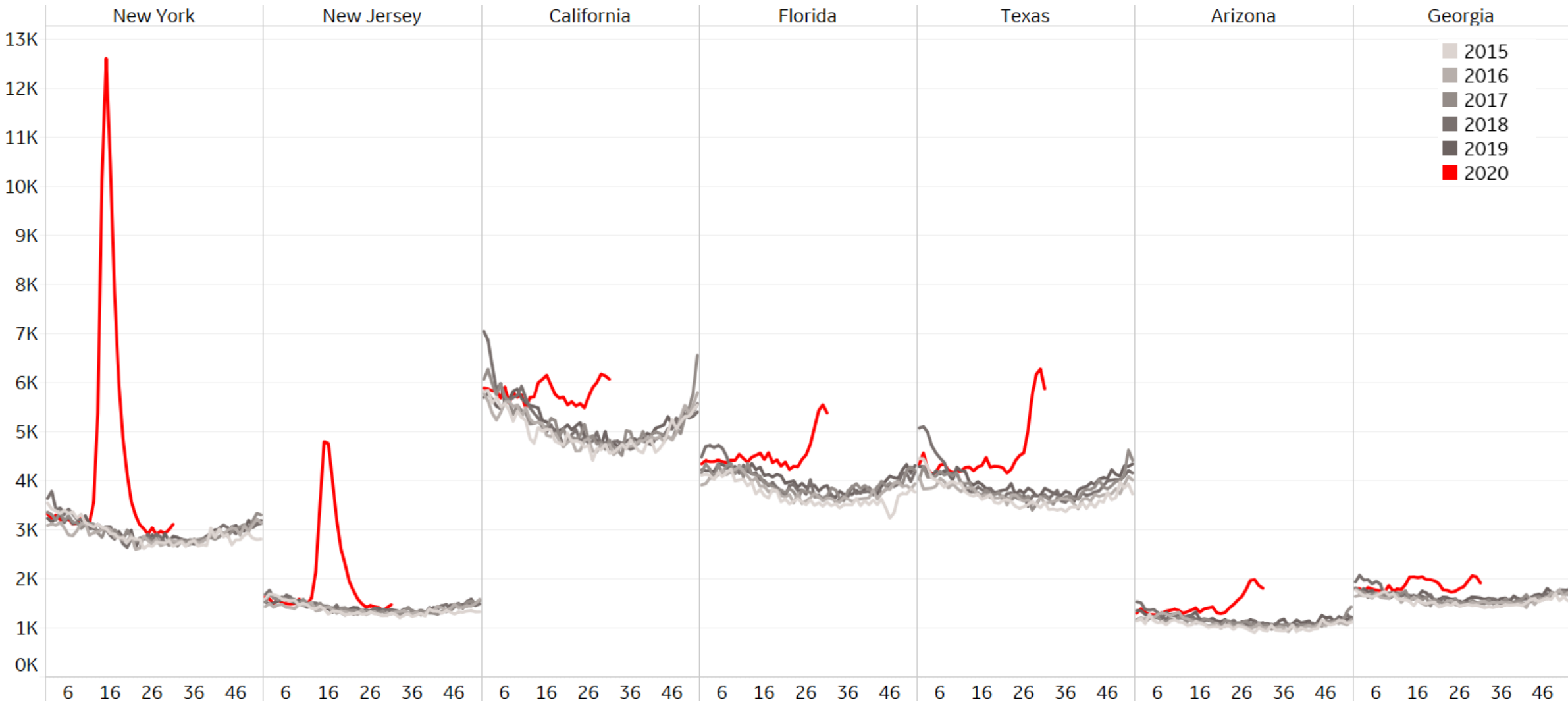
Total Deaths by Week 2015-2020





Feature: US All Cause Mortality, Select States

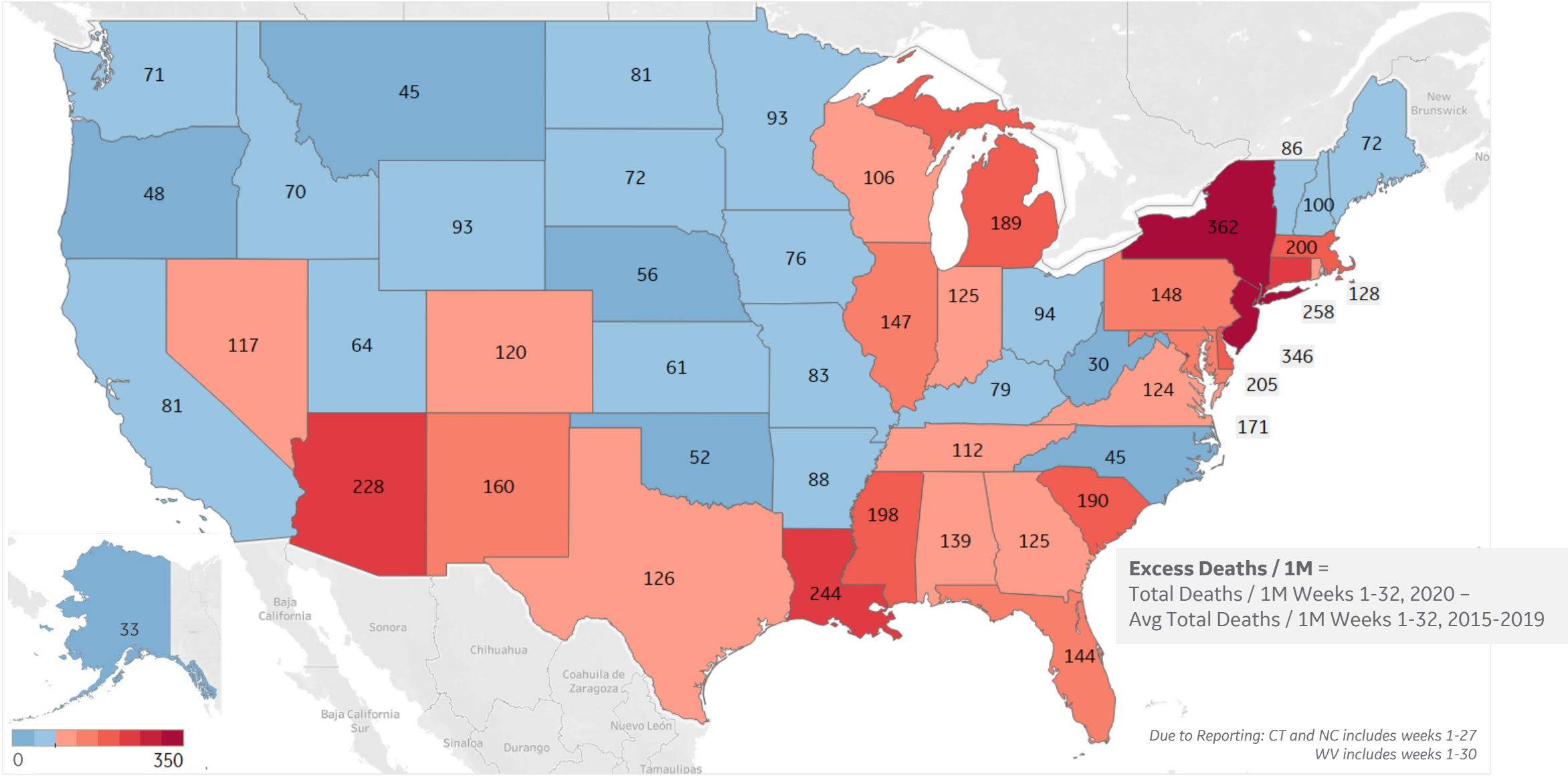
Total Deaths by Week 2015-2020





Feature: Total Excess Deaths by State

Excess Deaths / 1M, Weeks 1-32 compared to 2015-2019 Average





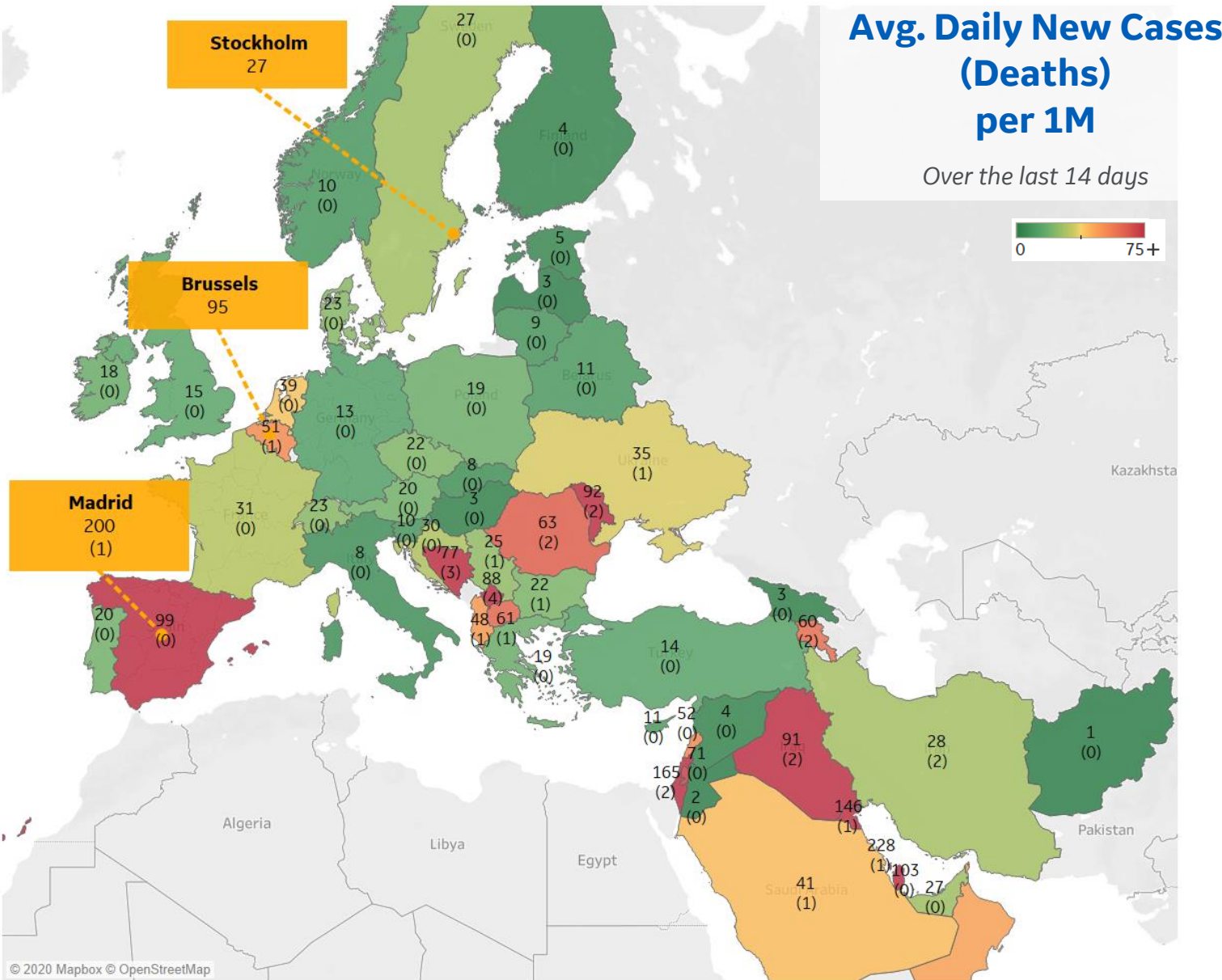
Per 1M in Region

	Today	Change
Active Cases	1,277	+1%
Confirmed	34 new	+1%
Deaths	1 new	+0.3%
Recovered	16 new	+1%

Most Daily New Cases / 1M

Bahrain	228
Israel	165
Kuwait	146
Qatar	103
Spain	99
Moldova	92
Iraq	91
Kosovo	88
Bos. and Herz.	77
Romania	63

* Excludes regions with population < 1M





Per 1M in Region

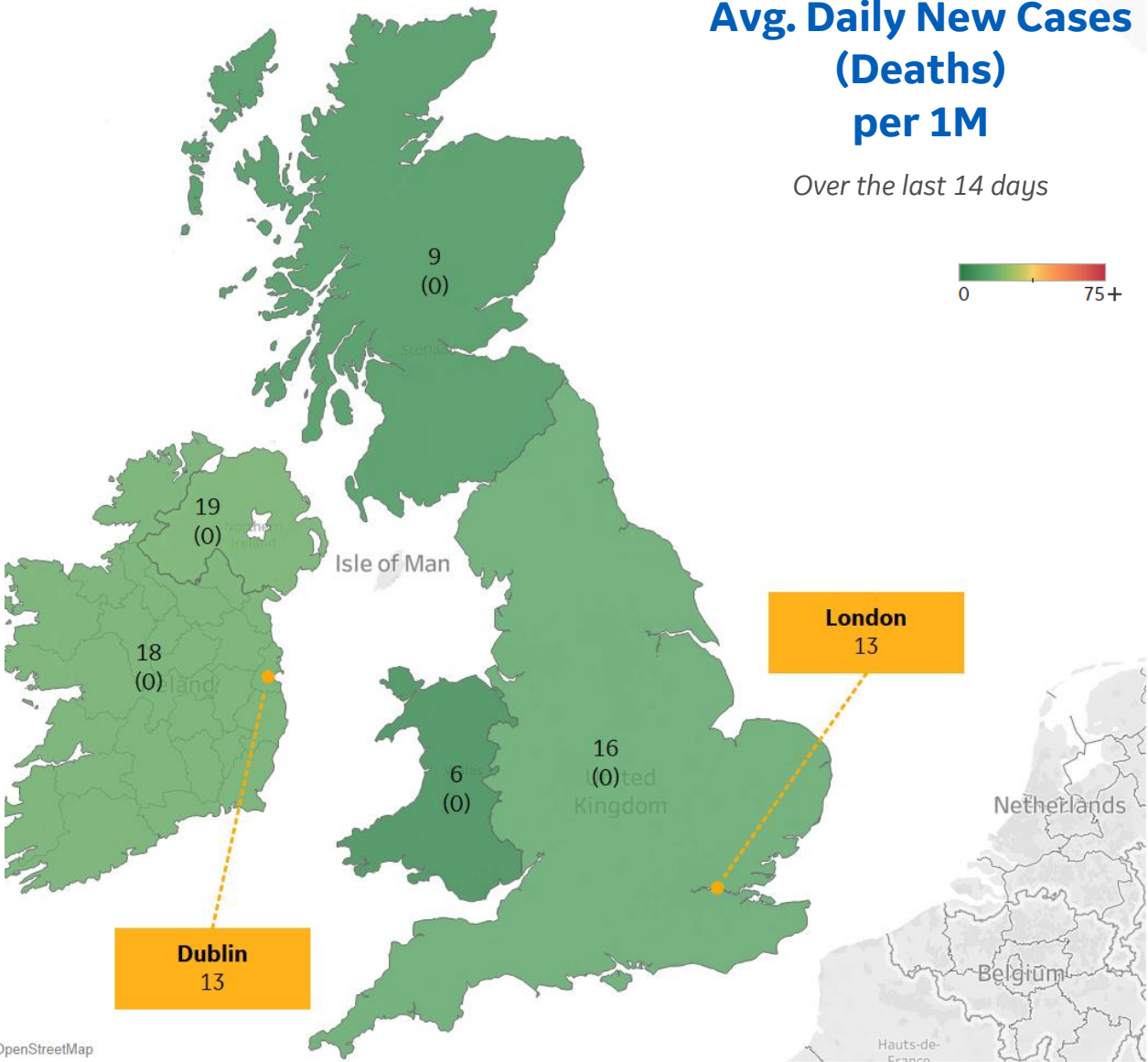
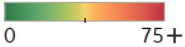
	Today	Change
Active Cases	3,878	+0.3%
Confirmed	12 new	+0.3%
Deaths	0.2 new	+0.04%
Recovered	0 new	+0%

Most Daily New Cases / 1M

Northern Ireland	19
Ireland	18
England	16
Scotland	9
Wales	6

Avg. Daily New Cases (Deaths) per 1M

Over the last 14 days





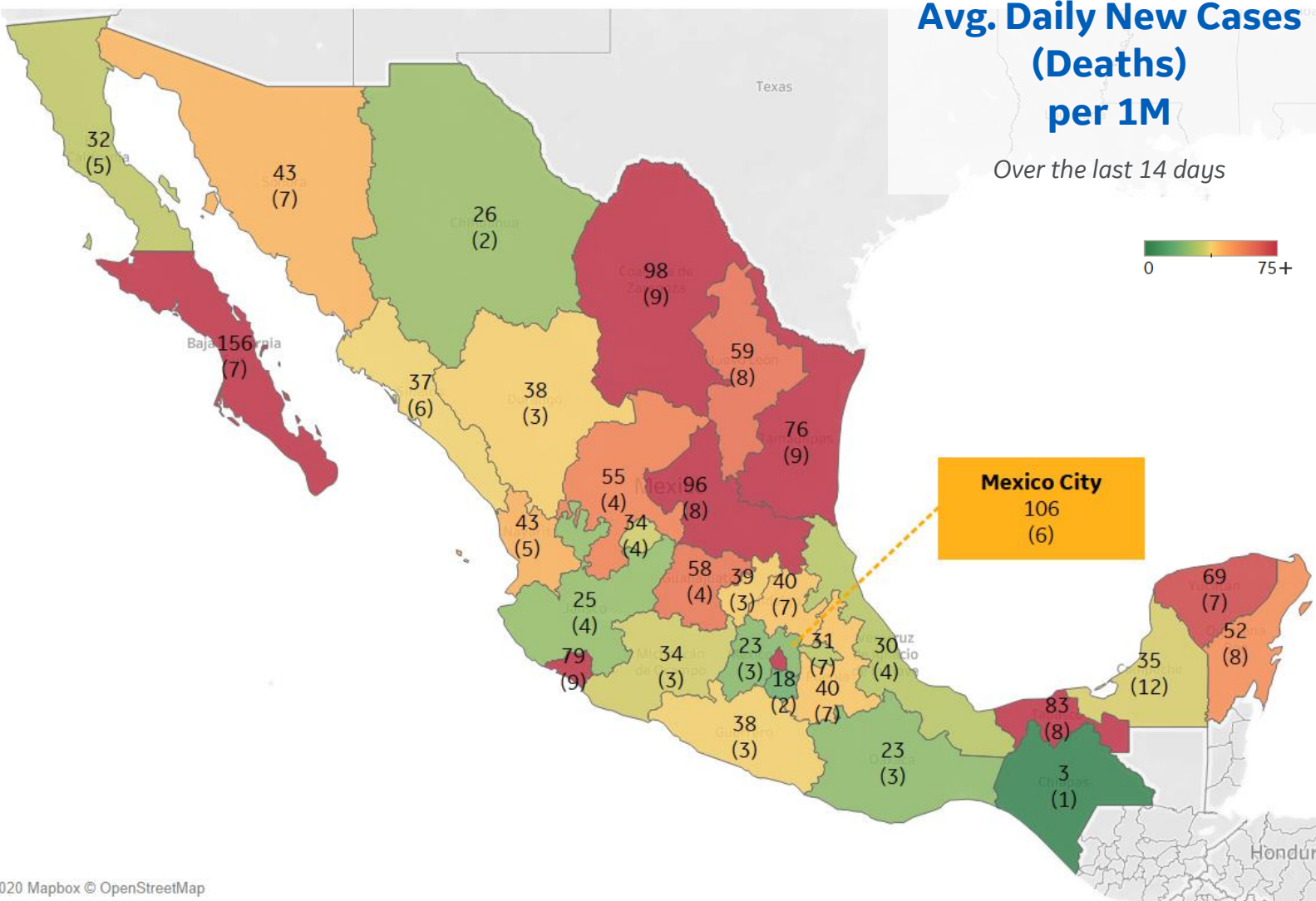
Mexico

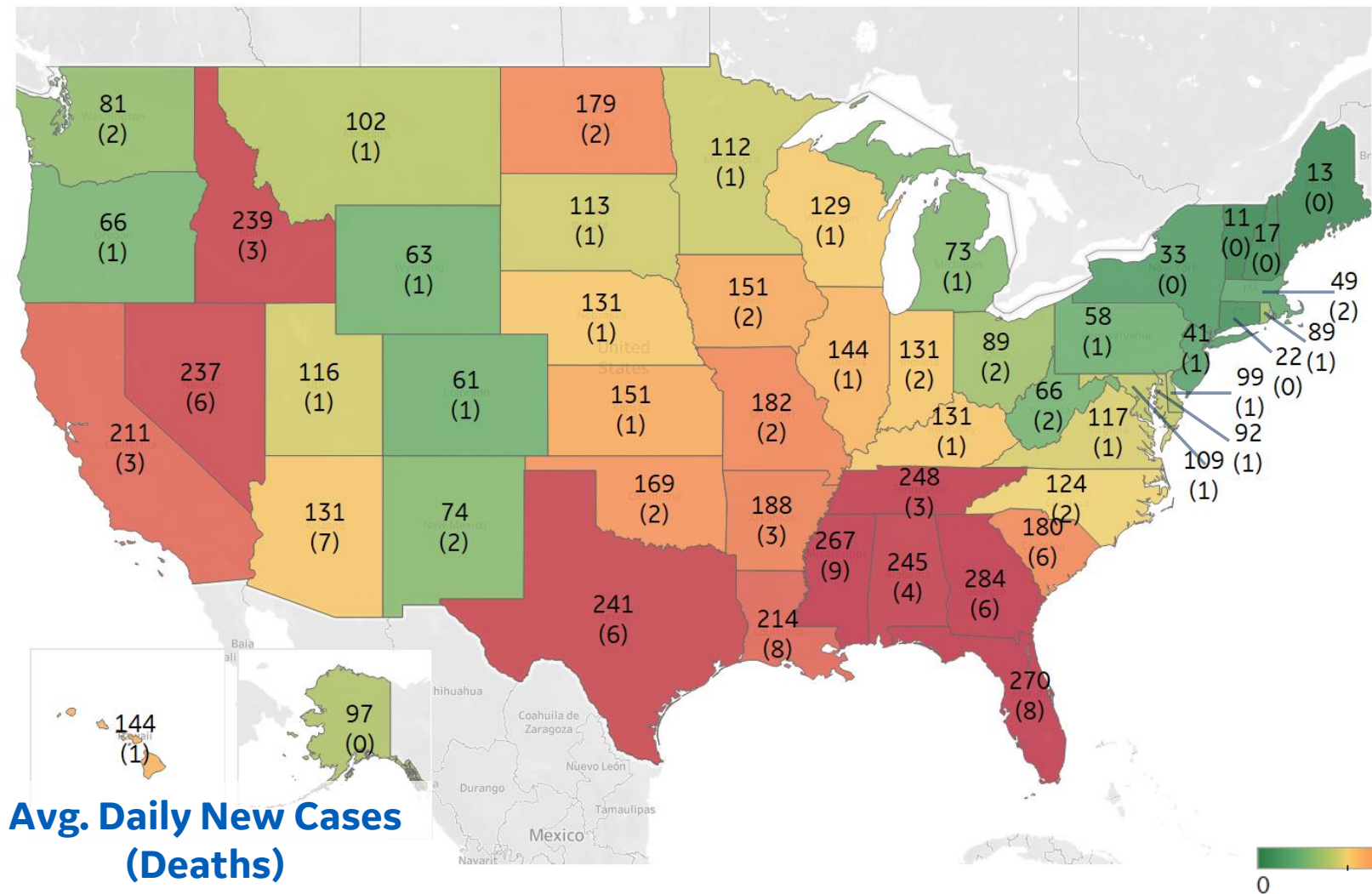
Per 1M in Region

	Today	Change
Active Cases	312	+1.3%
Confirmed	45 new	+1.1%
Deaths	5 new	+1.2%
Recovered	35 new	+1.0%

Most Daily New Cases / 1M

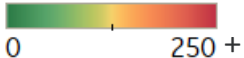
Baja California Sur	156
Distrito Federal	106
Coahuila	98
San Luis Potosí	96
Tabasco	83
Colima	79
Tamaulipas	76
Yucatán	69
Nuevo León	59
Guanajuato	58





**Avg. Daily New Cases
(Deaths)
per 1M**

Over the last 14 days



Note: Scale different from other pages

Top 10 by New Confirmed

Avg New Confirmed Cases / 1M

Georgia	284
Florida	270
Mississippi	267
Tennessee	248
Alabama	245
Texas	241
Idaho	239
Nevada	237
Louisiana	214
California	211

Top 10 by New Deaths

Avg New Deaths / 1M

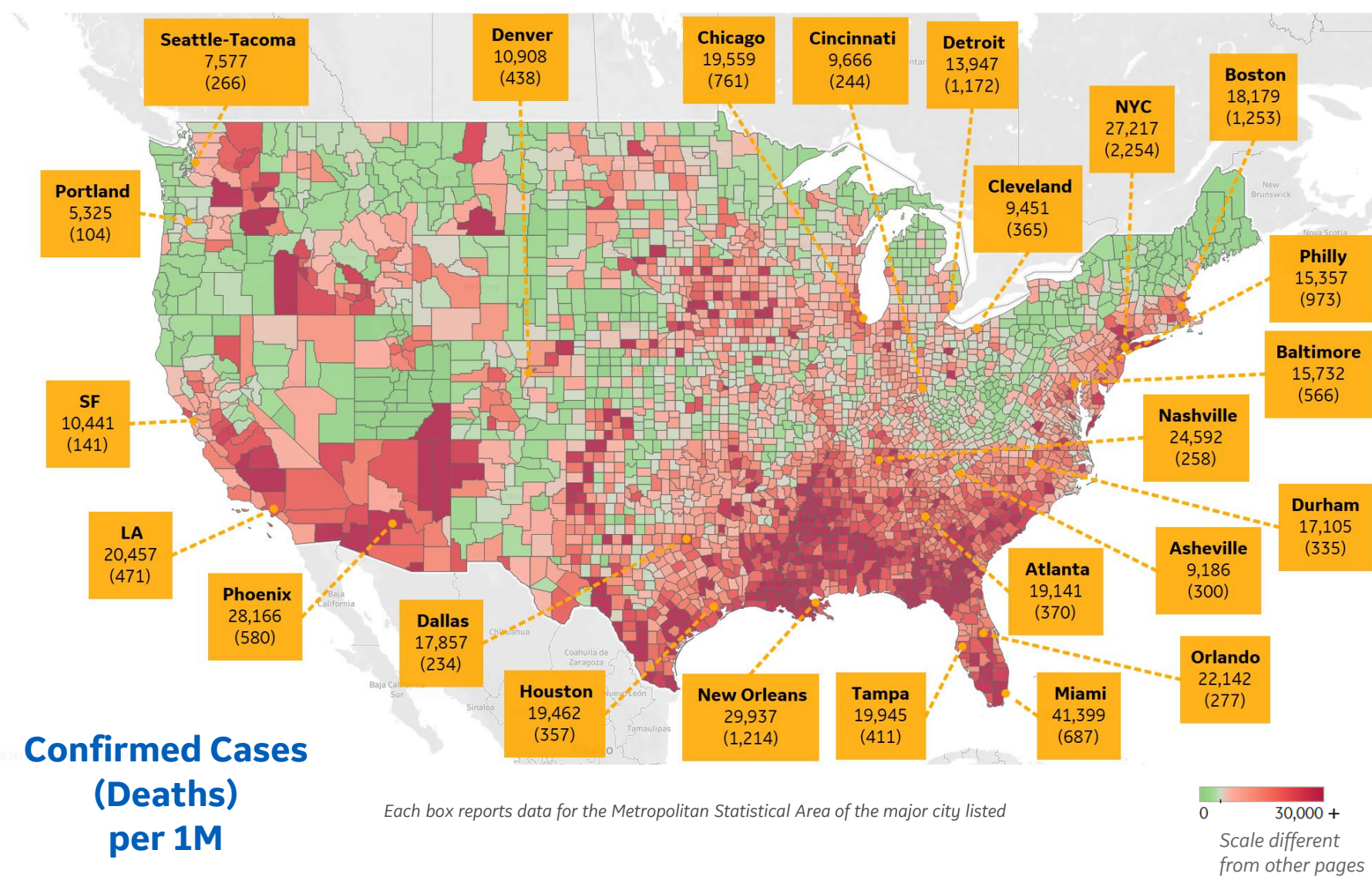
Mississippi	9
Louisiana	8
Florida	8
Arizona	7
South Carolina	6
Texas	6
Georgia	6
Nevada	6
Alabama	4
California	3



US by County & Metro, Total to Date

Updated 20 August 2020, 3:30 GMT

22



Top 10 Northeast Counties

Total Confirmed Cases / 1M

Rockland County, NY	43,178
Westchester County, NY	37,791
Passaic County, NJ	35,947
Nassau County, NY	32,473
Union County, NJ	30,415
Suffolk County, NY	30,005
Hudson County, NJ	29,678
Orange County, NY	29,308
New York City*	27,710
Suffolk County, MA	27,387

Top 10 Other US Counties

Total Confirmed Cases / 1M

Miami-Dade County, FL	54,507
Nueces County, TX	48,287
Cameron County, TX	43,336
Yakima County, WA	42,571
Jefferson Parish, LA	36,775
Webb County, TX	35,991
Broward County, FL	34,584
Escambia County, FL	32,983
Davidson County, TN	32,163
Charleston County, SC	31,750

Note: Includes counties ≥ 250K population
* New York City counties aggregated into one reporting area



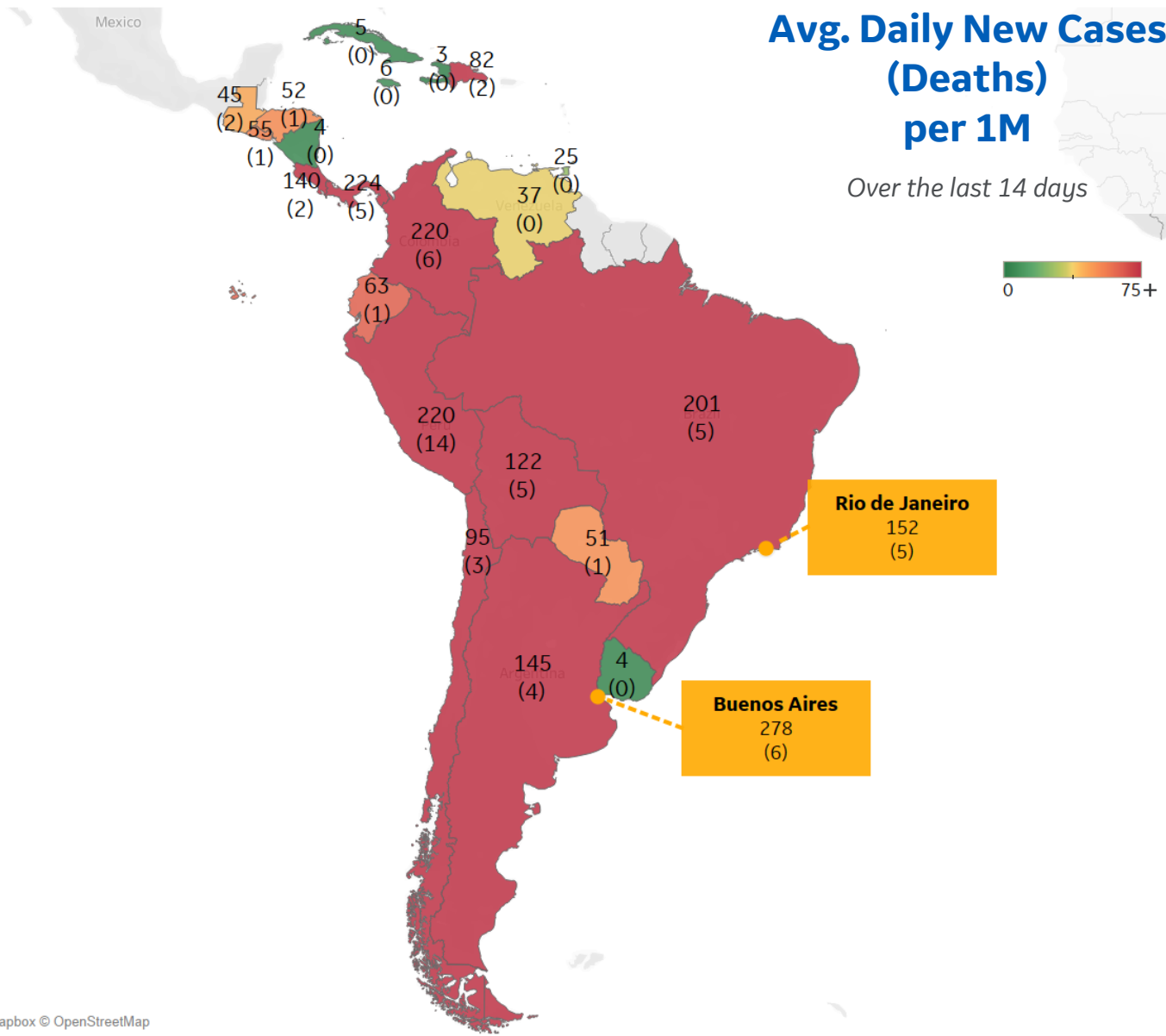
Per 1M in Region

	Today	Change
Active Cases	2,258	+0.4%
Confirmed	170 new	+2%
Deaths	4 new	+1%
Recovered	157 new	+2%

Most Daily New Cases / 1M

Panama	224
Peru	220
Colombia	220
Brazil	201
Argentina	145
Costa Rica	140
Bolivia	122
Chile	95
Dom. Rep.	82
Ecuador	63

* Excludes regions with population < 1M





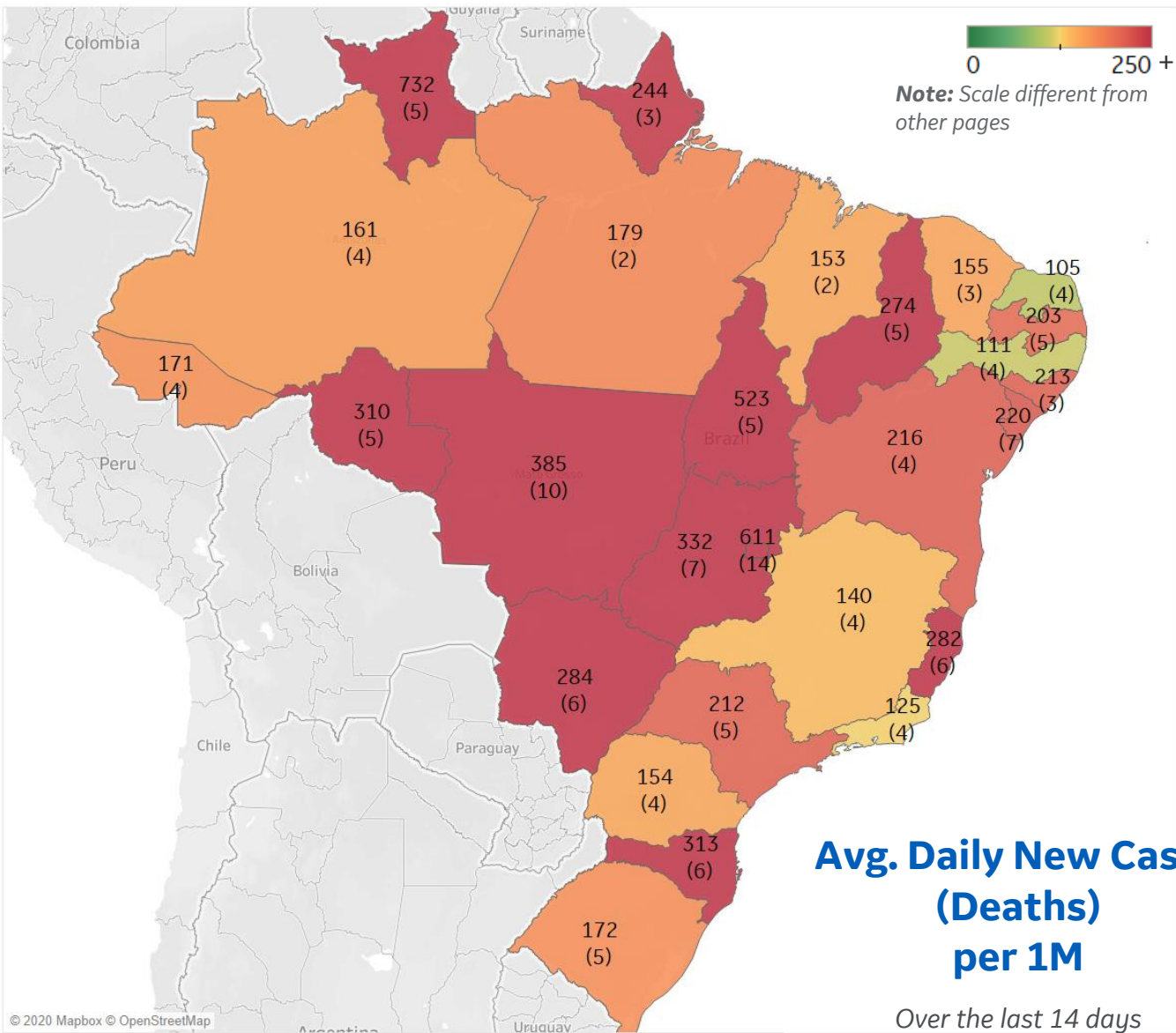
Per 1M in Region

	Today	Change
Active Cases	2,558	+0%
Confirmed	232 new	+1%
Deaths	6 new	+1%
Recovered	239 new	+2%

Most Daily New Cases / 1M

Distrito Federal	611
Tocantins	523
MatoGrosso	385
Goiás	332
Santa Catarina	313
Rondônia	310
MatoGrosso d..	284
Espírito Santo	282
Piauí	274
Sergipe	220

* Excludes regions with population < 1M





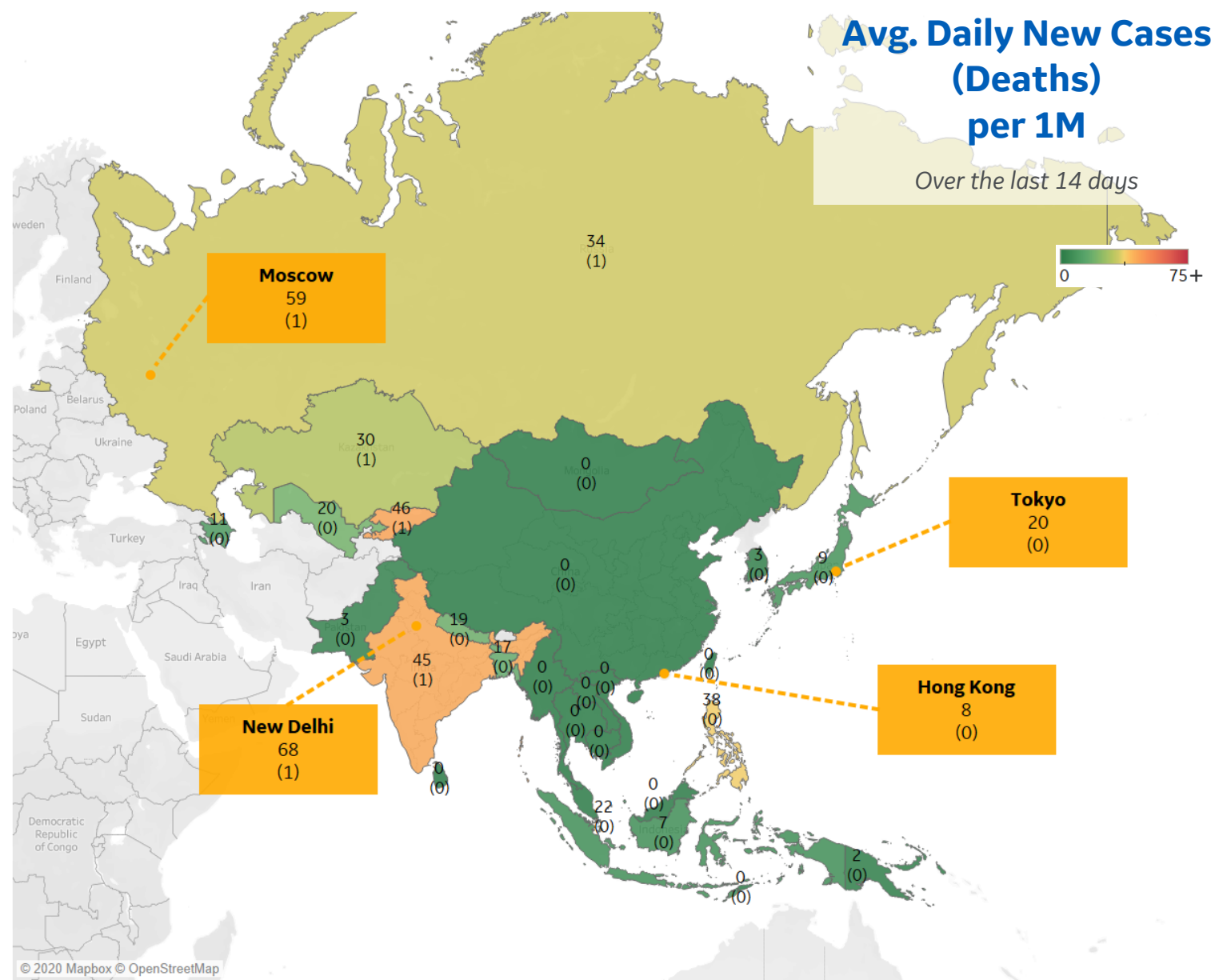
Per 1M in Region

	Today	Change
Active Cases	263	+0.9%
Confirmed	20 new	+2%
Deaths	0.3 new	+1%
Recovered	18 new	+2%

Most Daily New Cases / 1M

Kyrgyzstan	46
India	45
Philippines	38
Russia	34
Kazakhstan	30
Singapore	22
Uzbekistan	20
Nepal	19
Bangladesh	17
Azerbaijan	11

* Excludes regions with population < 1M





Per 1M in Region

	Today	Change
Active Cases	277	-1%
Confirmed	8 new	+1%
Deaths	0.4 new	+3%
Recovered	10 new	+2%

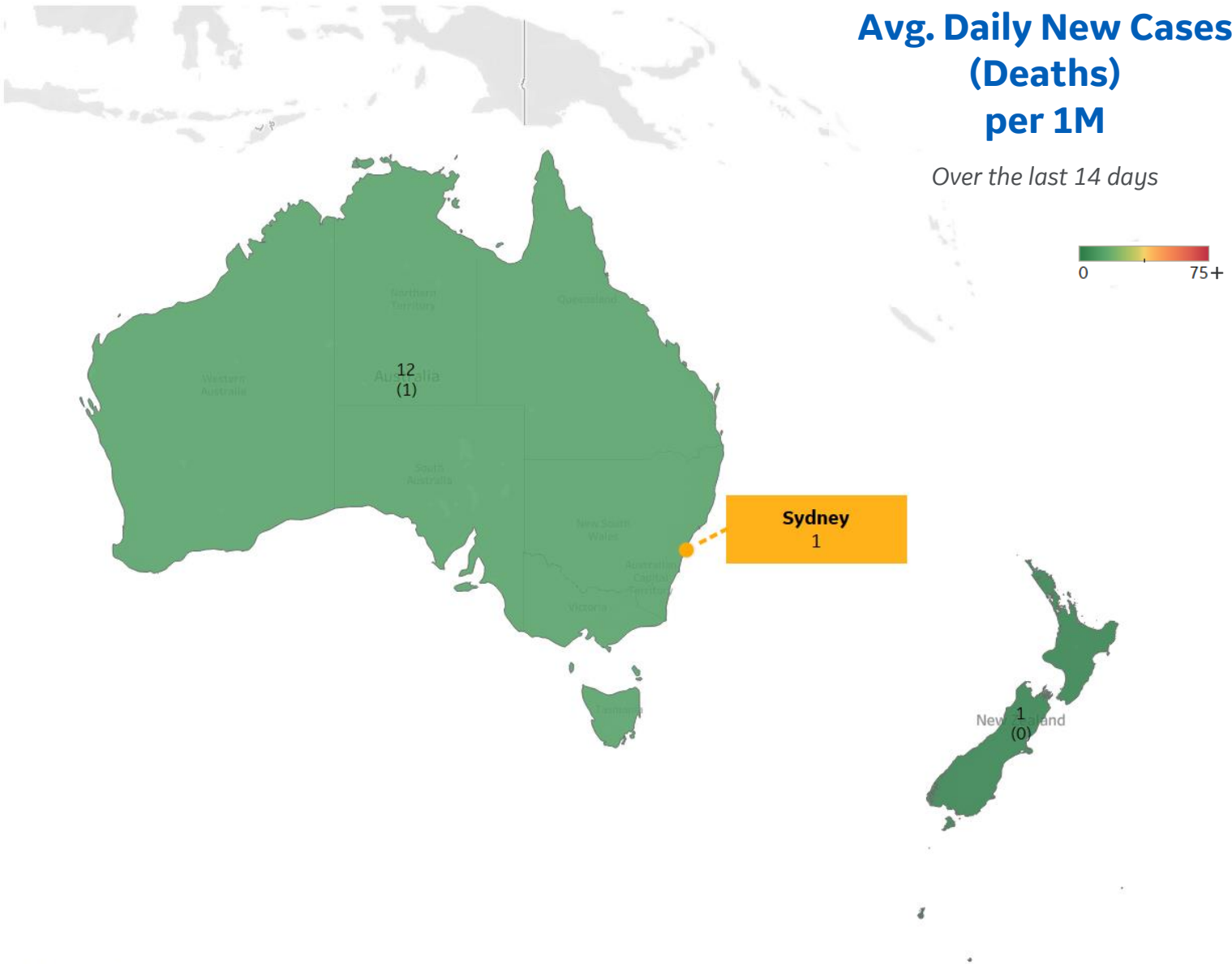
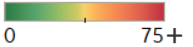
Most Daily New Cases / 1M

Australia	12
New Zealand	1

* Excludes regions with population < 1M

Avg. Daily New Cases (Deaths) per 1M

Over the last 14 days





Africa



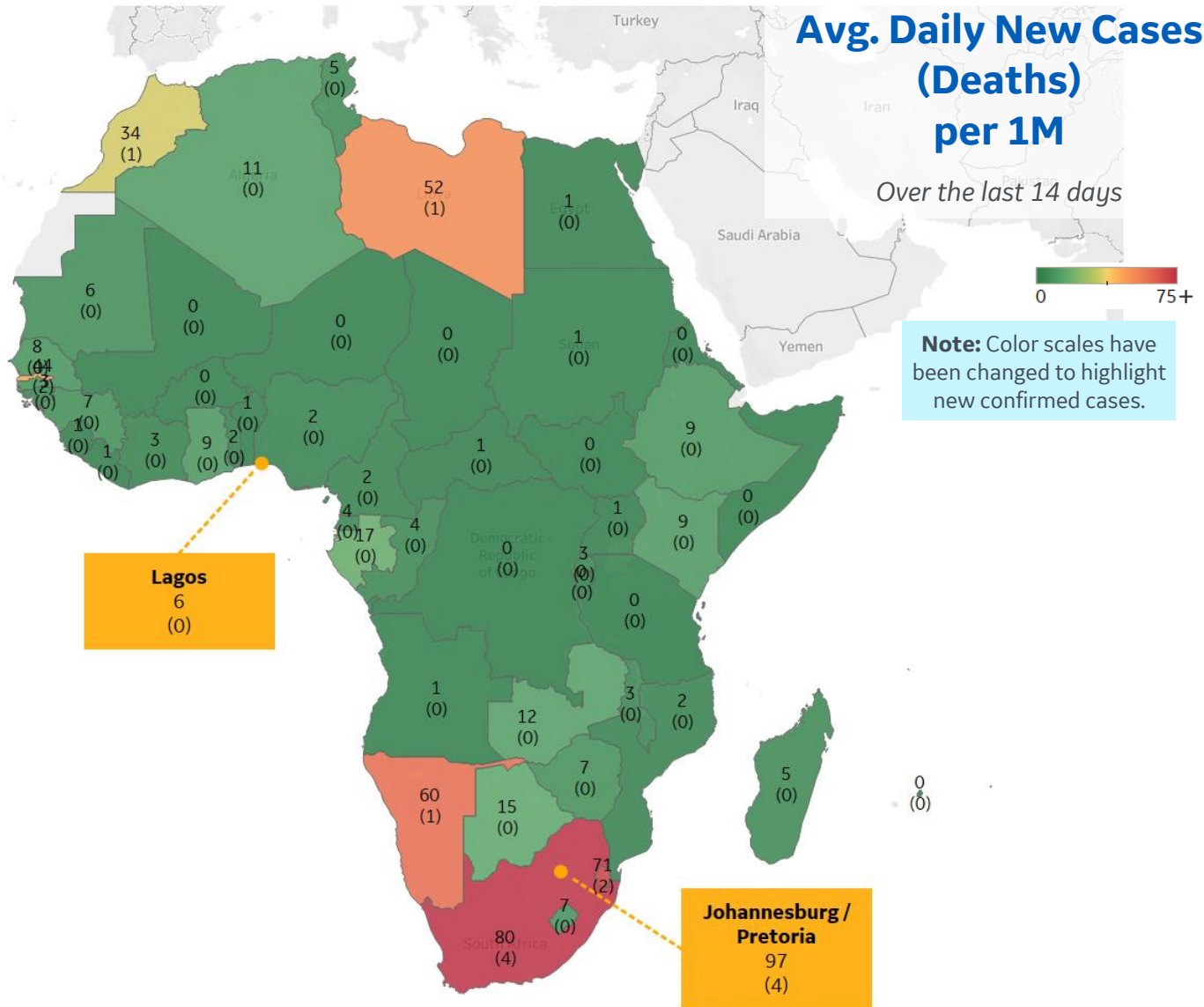
Per 1M in Region

	Today	Change
Active Cases	187	-0.4%
Confirmed	8 new	+1%
Deaths	0.2 new	+1%
Recovered	9 new	+1%

Most Daily New Cases / 1M

South Africa	80
Eswatini	71
Namibia	60
Libya	52
Gambia	44
Morocco	34
Gabon	17
Botswana	15
Zambia	12
Algeria	11

* Excludes regions with population < 1M





Sources



*** Per 1M = Per 1 Million Population unless otherwise noted*

Johns Hopkins Coronavirus Resource Center:

<https://coronavirus.jhu.edu/map.html>

Worldometer Coronavirus Reporting:

<https://www.worldometers.info/coronavirus/>

Public Health England:

<https://www.gov.uk/government/publications/covid-19-track-coronavirus-cases>

US Department of Homeland Security, Homeland Infrastructure Foundation-Level Data:

<https://hifld-geoplatform.opendata.arcgis.com/datasets/hospitals>

City of New York, NYC Health:

<https://www1.nyc.gov/site/doh/covid/covid-19-data.page>

Chicago Coronavirus Latest Data:

<https://www.chicago.gov/city/en/sites/covid-19/home/latest-data.html>

National Health Commission of the PRC:

<http://www.nhc.gov.cn/xcs/yqtb/202003/bf66696029ba420098164607240074f8.shtml>

Korean Centers for Disease Control and Prevention:

http://www.cdc.go.kr/cdc_eng/

CDC, Severe Outcomes Among Patients with Coronavirus Disease 2019 (COVID-19):

<https://www.cdc.gov/mmwr/volumes/69/wr/mm6912e2.htm>

Italian Department of Civil Protection, COVID Monitoring:

<http://opendatadpc.maps.arcgis.com/apps/opsdashboard/index.html#/b0c68bce2cce478eaac82fe38d4138b1>

The COVID Tracking Project:

<https://covidtracking.com/data/>

UK Office for National Statistics

<https://www.ons.gov.uk/peoplepopulationandcommunity/birthsdeathsandmarriages/deaths/bulletins/deathsregisteredweeklyinenglandandwalesprovisional/weekending24april2020>

WHO Europe, Surveillance Report:

<http://www.euro.who.int/en/health-topics/health-emergencies/coronavirus-covid-19/weekly-surveillance-report>

WHO Europe, Principles for Transition:

<http://www.euro.who.int/en/media-centre/sections/statements/2020/statement-transition-to-a-new-normal-during-the-covid-19-pandemic-must-be-guided-by-public-health-principles>

COVID-19 Information for Switzerland:

<https://www.corona-data.ch/>

Italian Ministry of Health:

<http://www.salute.gov.it/portale/nuovocoronavirus/dettaglioContenutiNuovoCoronavirus.jsp?lingua=italiano&id=5351&area=nuovoCoronavirus&menu=vuoto>

New South Wales Government:

<https://www.health.nsw.gov.au/Infectious/diseases/Pages/covid-19-latest.aspx>

Provincial Health Services Authority of Canada. BC Center for Disease Control:

<http://www.bccdc.ca/about/news-stories/stories/2020/information-on-novel-coronavirus>

Coronavirus Cases in Japan by Prefecture, Nippon Communications Foundation:

<https://www.nippon.com/en/japan-data/h00657/coronavirus-cases-in-japan-by-prefecture.html>

Secretary of Health, Mexico:

<https://www.gob.mx/salud/en>

OECD Economic Outlooks, Statistics:

https://www.oecd-ilibrary.org/economics/data/oecd-economic-outlook-statistics-and-projections_eo-data-en

Public Health Authority of Sweden:

<https://www.folkhalsomyndigheten.se/smittskydd-beredskap/utbrott/aktuella-utbrott/covid-19/bekraftade-fall-i-sverige>

National Public Health Agency of France:

<https://www.santepubliquefrance.fr/regions/ile-de-france/documents/bulletin-regional/2020/covid-19-point-epidemiologique-en-ile-de-france-du-23-avril-2020>

Florida Department of Health, COVID-19 Response:

<https://floridahealthcovid19.gov>

CDC:

<https://www.cdc.gov/covid-data-tracker/index.html#demographics>

CDC Provisional COVID19 Deaths Counts

<https://data.cdc.gov/NCHS/Provisional-COVID-19-Death-Counts-by-Sex-Age-and-S/9bhg-hcku>

Johns Hopkins Coronavirus Resource Center:

<https://coronavirus.jhu.edu/map.html>

CIA World Factbook:

<https://www.cia.gov/library/publications/resources/the-world-factbook/>