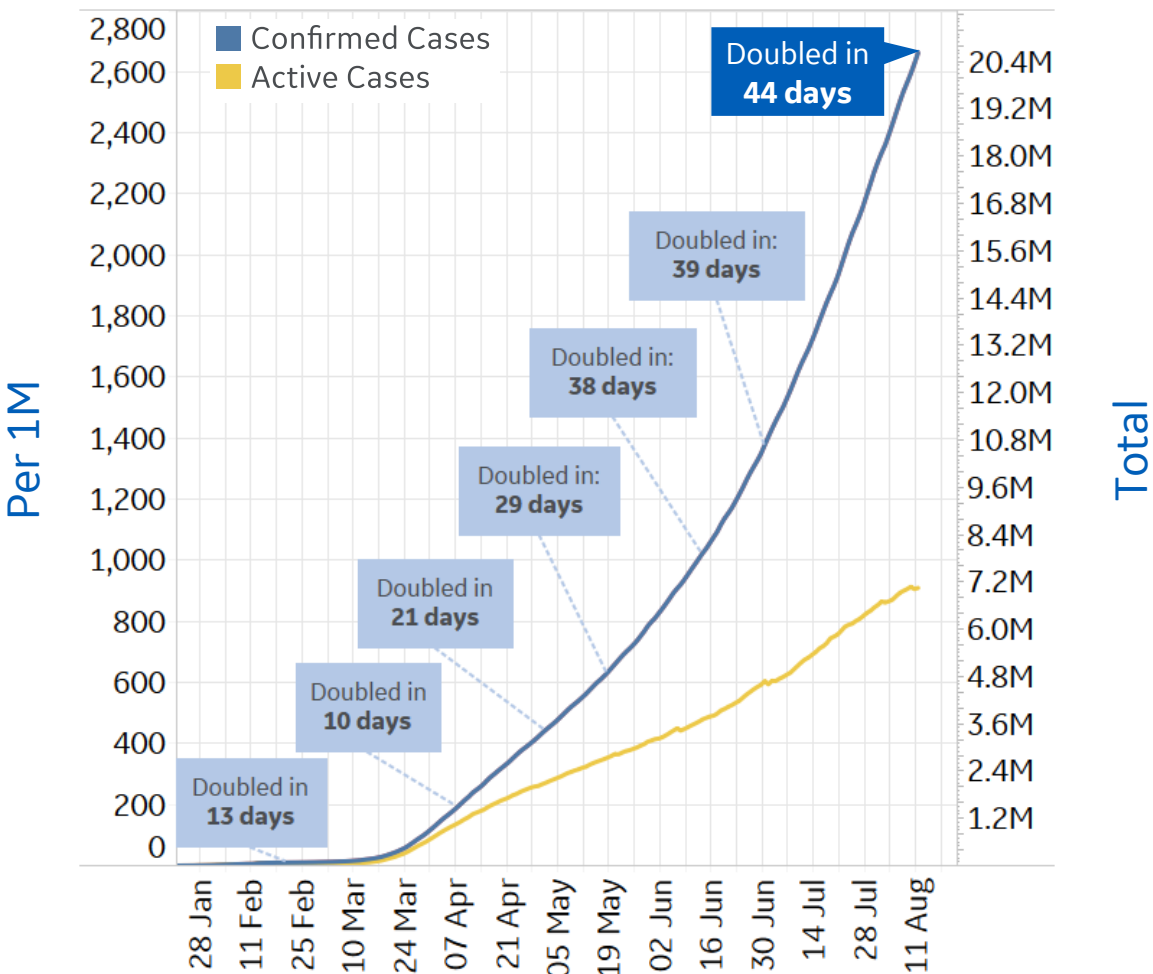




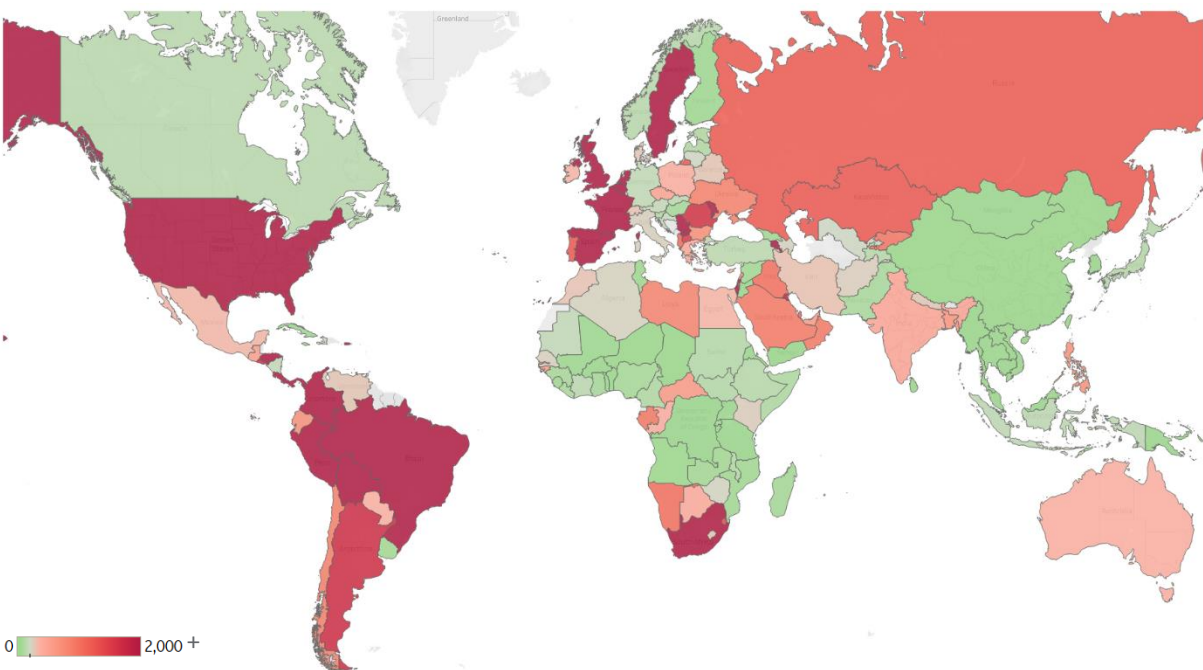
Global Confirmed & Active Cases

Trend since 22 Jan



Today per 1M

Active cases = Confirmed - Recovered - Deaths



Per 1M:	Today		Change
Active Today	909		+0%
Active	3	new	+0.4%
Confirmed	36	new	+1%
Deaths	1	new	+1%
Recovered	31	new	+2%

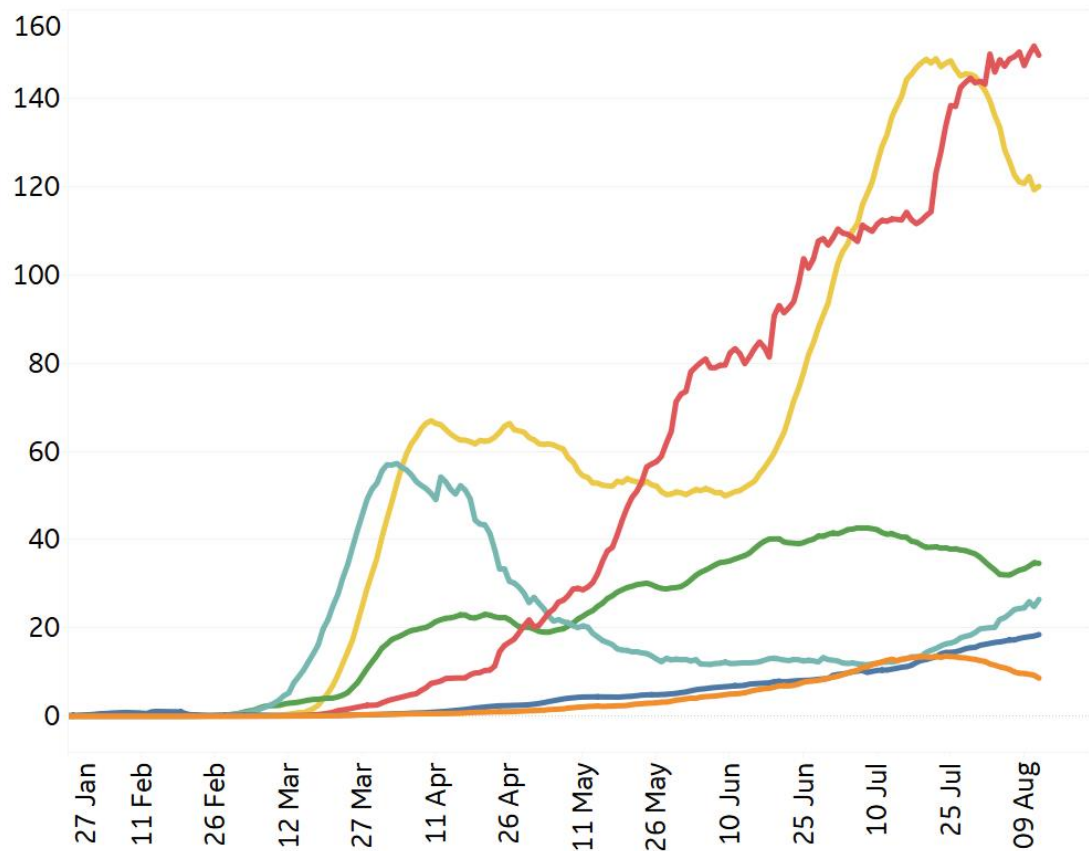


New Confirmed Cases & New Deaths

Key North America Europe Middle East Central/South America Asia Africa

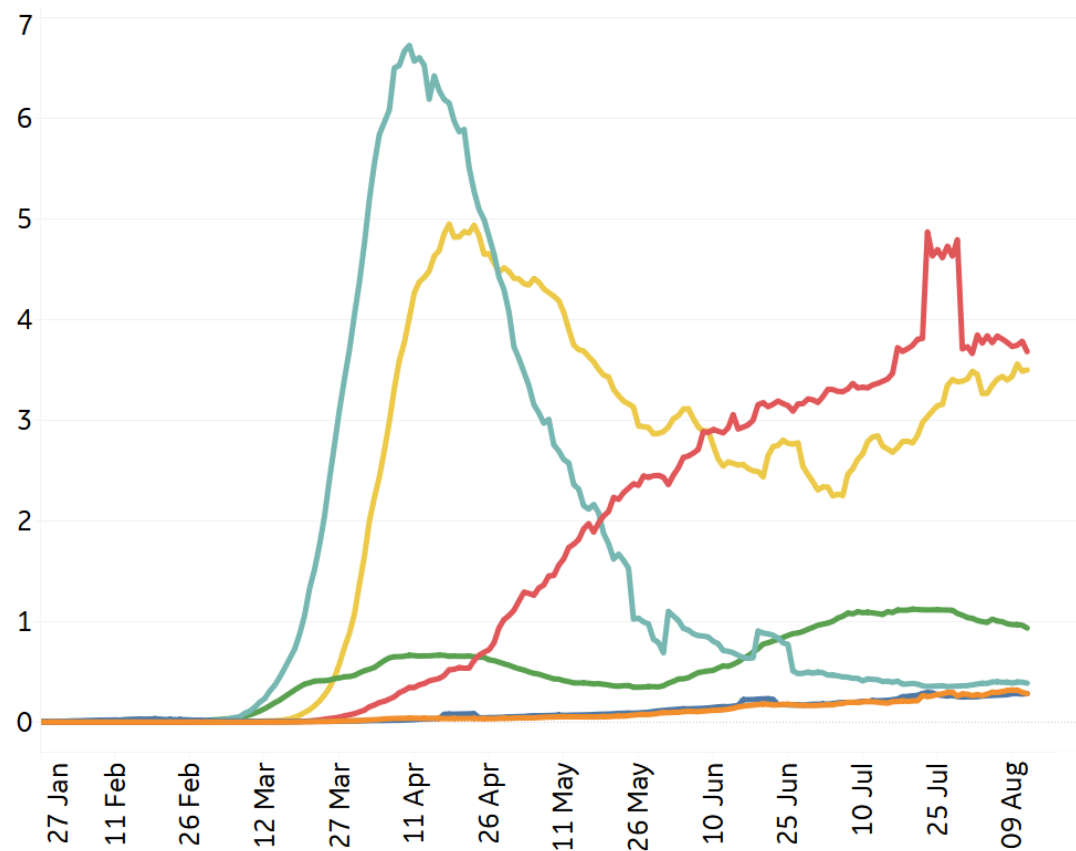
New Confirmed Cases / 1M

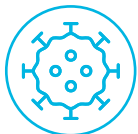
7-day rolling average



New Deaths / 1M

7-day rolling average





Top 50 Countries: Per 1M



1 - 25

	Today		Total Since 22 Jan			Change from 14d Ago [*] in 14 day avg of daily new	
	New Confirmed	New Deaths	Total Confirmed	Total Recovered	Total Deaths	Confirmed	Deaths
Belgium	55	1	6,527	1,543	854	86%	33%
UK	15	1	4,649	22	689	30%	-18%
Peru	0	0	14,851	10,371	652	41%	-58%
Spain	68	0	7,053	3,216	611	87%	393%
Italy	8	0	4,163	3,352	583	51%	-27%
Sweden	33	0	8,263	0	572	12%	-72%
Chile	81	1	19,783	18,383	534	-12%	-56%
US	169	5	15,701	5,298	502	-17%	6%
Brazil	259	6	14,889	11,791	490	5%	-5%
France	73	1	3,739	1,281	465	119%	45%
Mexico	45	6	3,865	3,112	424	-1%	10%
Panama	212	5	17,933	11,958	395	1%	-16%
Netherlands	77	1	3,602	15	361	223%	45%
Ireland	7	0	5,435	4,732	359	246%	-38%
Ecuador	88	2	5,504	4,471	339	8%	-22%
Bolivia	149	6	8,145	2,812	328	1%	18%
EU	36	0	3,553	1,962	309	64%	30%
Armenia	68	1	13,767	11,302	272	-42%	-37%
Colombia	237	7	8,304	4,712	272	32%	20%
North Macedo..	64	0	5,864	4,074	254	-13%	-35%
Switzerland	32	0	4,295	3,778	230	43%	9%
Kyrgyzstan	47	1	6,247	5,058	227	-72%	-88%
Iran	30	2	3,973	3,456	226	1%	-10%
Moldova	118	1	7,114	4,957	214	22%	4%
South Africa	47	4	9,593	7,284	186	-39%	15%

26 - 50

	Today		Total Since 22 Jan			Change from 14d Ago [*] in 14 day avg of daily new	
	New Confirmed	New Deaths	Total Confirmed	Total Recovered	Total Deaths	Confirmed	Deaths
Kosovo	0	0	5,646	3,283	185	-1%	73%
Portugal	27	0	5,220	3,819	173	-18%	-20%
Honduras	26	2	4,913	701	155	-29%	-37%
Romania	74	2	3,388	1,614	146	21%	70%
Iraq	86	1	3,989	2,848	139	22%	-16%
Bos. and Herz.	77	2	4,560	2,690	138	3%	69%
Dom. Rep.	104	2	7,580	4,341	126	-13%	28%
Argentina	170	5	5,942	4,144	115	32%	55%
Kuwait	168	1	17,278	15,326	115	-13%	0%
Oman	49	1	16,116	15,093	106	-78%	-3%
Russia	35	1	6,172	4,858	104	-11%	-17%
Bahrain	270	1	26,601	24,587	98	-14%	-19%
Saudi Arabia	45	1	8,417	7,390	94	-36%	-8%
El Salvador	58	1	3,337	1,550	89	12%	2%
Israel	180	2	10,184	7,176	74	-18%	29%
Kazakhstan	28	0	5,399	4,088	68	-39%	14%
Qatar	101	1	39,547	38,398	66	-27%	17%
Belarus	10	0	7,313	6,973	63	-24%	-31%
Eq. Guinea	0	0	3,436	1,555	59	N/A	N/A
Costa Rica	108	2	4,919	1,608	52	6%	40%
Azerbaijan	9	0	3,336	3,063	49	-53%	-47%
UAE	25	0	6,391	5,783	36	-19%	-8%
Gabon	32	0	3,629	2,660	23	-41%	-33%
Singapore	7	0	9,469	8,635	5	-17%	N/A
Total World	36	1	2,662	1,656	97	4%	-2%

^{*}Change from 14d ago:
Compares 14d-avgs. of Daily New Cases/Deaths
today with 14d-avgs. from 14d ago

Qatar has nearly twice as many total confirmed cases / 1M as **New York State**
(39,547 vs 21,729 respectively)

Sorted by Total Deaths / 1M
Top 50 countries selected by Cases / 1M
Excluded countries with population < 1M

Several countries are revising and updating case counts



Top 50 Countries: Raw Volume

Updated 13 August 2020, 3:30 GMT

4

1 - 25

	Today		Total Since 22 Jan			Change from 14d Ago [*] in 14 day avg of daily new	
	New Confirmed	New Deaths	Total Confirmed	Total Recovered	Total Deaths	Confirmed	Deaths
US	55,910	1,499	5,197,118	1,753,760	166,026	-17%	6%
EU	15,905	169	1,582,025	873,588	137,442	64%	30%
Brazil	55,155	1,175	3,164,785	2,506,228	104,201	5%	-5%
Mexico	5,858	737	498,380	401,182	54,666	-1%	10%
India	66,999	942	2,396,637	1,695,982	47,033	33%	20%
UK	1,039	77	315,581	1,472	46,791	30%	-18%
Italy	476	10	251,713	202,697	35,225	51%	-27%
France	4,733	47	244,088	83,609	30,375	119%	45%
Spain	3,172	-2	329,784	150,376	28,579	87%	393%
Peru	0	0	489,680	341,938	21,501	41%	-58%
Iran	2,510	188	333,699	290,244	18,988	1%	-10%
Russia	5,054	128	900,745	708,900	15,231	-11%	-17%
Colombia	12,066	362	422,519	239,785	13,837	32%	20%
South Africa	2,810	259	568,919	432,029	11,010	-39%	15%
Chile	1,552	27	378,168	351,419	10,205	-12%	-56%
Belgium	639	15	75,647	17,883	9,900	86%	33%
Germany	1,319	5	220,859	198,991	9,213	61%	42%
Canada	314	14	122,703	108,829	9,052	-20%	-14%
Netherlands	1,327	20	61,718	253	6,182	223%	45%
Pakistan	730	17	285,921	263,193	6,129	-48%	-49%
Ecuador	1,547	33	97,110	78,887	5,984	8%	-22%
Indonesia	1,942	79	130,718	85,798	5,903	8%	-21%
Turkey	1,212	18	244,392	227,089	5,891	19%	-3%
Sweden	329	4	83,455	0	5,774	12%	-72%
Iraq	3,441	57	160,436	114,541	5,588	22%	-16%

26 - 50

	Today		Total Since 22 Jan			Change from 14d Ago [*] in 14 day avg of daily new	
	New Confirmed	New Deaths	Total Confirmed	Total Recovered	Total Deaths	Confirmed	Deaths
Argentina	7,663	209	268,574	187,283	5,213	32%	55%
Egypt	129	26	95,963	55,901	5,085	-69%	-46%
China	87	4	89,045	82,633	4,697	-7%	179%
Bolivia	1,743	66	95,071	32,830	3,827	1%	18%
Bangladesh	2,995	42	266,498	153,089	3,513	-11%	-17%
Saudi Arabia	1,569	36	293,037	257,269	3,269	-36%	-8%
Romania	1,415	43	65,177	31,048	2,807	21%	70%
Philippines	4,211	92	143,749	68,997	2,404	119%	27%
Guatemala	1,123	34	59,089	47,394	2,267	-26%	-11%
Ukraine	1,481	20	86,504	47,084	1,999	42%	42%
Poland	715	9	53,676	37,611	1,830	63%	36%
Portugal	278	3	53,223	38,940	1,764	-18%	-20%
Panama	913	23	77,377	51,597	1,703	1%	-16%
Honduras	254	18	48,657	6,945	1,533	-29%	-37%
Dom. Rep.	1,130	25	82,224	47,095	1,371	-13%	28%
Kazakhstan	517	0	101,372	76,756	1,269	-39%	14%
Japan	986	8	51,288	34,969	1,066	75%	282%
Israel	1,558	17	88,151	62,109	639	-18%	29%
Belarus	97	3	69,102	65,893	595	-24%	-31%
Oman	249	6	82,299	77,072	539	-78%	-3%
Kuwait	717	3	73,785	65,451	489	-13%	0%
UAE	246	0	63,212	57,193	358	-19%	-8%
Qatar	292	2	113,938	110,627	190	-27%	17%
Singapore	42	0	55,395	50,520	27	-17%	N/A
Total World	276,659	6,658	20,620,847	12,826,815	749,358	4%	-2%

^{*}Change from 14d ago:
Compares 14d-avgs. of Daily New Cases/Deaths
today with 14d-avgs. from 14d ago

Deaths in **Sweden** increased 4% in last 30 days

Sorted by Raw Total Deaths
Top 50countries selected by Total Cases
Excluded countries with population < 1M

Several countries are revising and updating case counts



United States: Per 1M



1 - 26

	Today		Total Since 22 Jan			Change from 14d Ago [*] in 14 day avg of daily new	
	New Confirmed	New Deaths	Total Confirmed	Total Recovered	Total Deaths	Confirmed	Deaths
New Jersey	52	-1	20,934	3,740	1,788	457%	-6%
New York	36	1	21,729	3,796	1,686	155%	-15%
Massachusetts	0	0	17,658	14,366	1,270	16%	-19%
Connecticut	6	2	14,222	2,446	1,248	-39%	-44%
Rhode Island	72	2	19,001	1,821	961	15%	-45%
Louisiana	254	9	28,890	22,266	937	-25%	13%
DC	89	0	18,362	14,594	840	-1%	-31%
Mississippi	363	15	23,310	16,745	668	-23%	335%
Michigan	48	1	9,882	6,372	655	-3%	27%
Illinois	130	1	15,775	N/A	622	27%	0%
Delaware	68	1	16,190	8,749	608	-24%	-97%
Maryland	89	1	16,108	985	597	-2%	-2%
Arizona	97	20	26,027	3,629	597	-43%	-12%
Pennsylvania	70	3	9,836	7,380	576	-13%	41%
Indiana	98	3	11,367	8,498	458	12%	5%
Georgia	336	10	21,300	N/A	420	-5%	48%
S. Carolina	164	9	20,000	7,931	416	-27%	-14%
Florida	378	10	25,650	N/A	408	-34%	34%
Alabama	191	7	21,371	8,469	384	-15%	5%
New Mexico	83	1	10,881	4,584	331	-38%	-16%
Texas	216	11	18,071	12,669	329	-14%	28%
Colorado	55	0	8,984	974	326	-17%	-90%
Nevada	171	5	18,846	450	323	-21%	-51%
Ohio	122	2	8,918	7,042	319	-12%	-8%
New Hampshire	19	1	5,065	4,532	309	-11%	-53%
Minnesota	82	3	11,047	9,904	306	2%	34%

27 - 51

	Today		Total Since 22 Jan			Change from 14d Ago [*] in 14 day avg of daily new	
	New Confirmed	New Deaths	Total Confirmed	Total Recovered	Total Deaths	Confirmed	Deaths
Minnesota	82	3	11,047	9,904	306	2%	34%
Iowa	143	2	15,839	12,252	302	-13%	14%
Virginia	91	1	12,011	1,552	276	0%	71%
California	315	6	14,967	N/A	272	-20%	15%
Washington	72	1	8,497	N/A	226	-10%	14%
Missouri	247	1	10,258	N/A	221	2%	21%
N. Carolina	95	4	13,324	11,153	218	-21%	39%
Arkansas	227	2	16,932	14,248	190	-4%	175%
Tennessee	216	3	18,508	12,782	189	-19%	14%
Nebraska	111	3	15,118	11,017	184	3%	-16%
Kentucky	258	2	8,269	1,991	177	2%	-16%
Wisconsin	82	1	10,694	8,991	174	-9%	19%
South Dakota	115	1	11,095	9,728	166	19%	0%
Oklahoma	169	2	11,473	9,600	158	-9%	14%
North Dakota	112	3	10,458	8,943	157	5%	29%
Idaho	300	0	14,624	5,343	138	-11%	16%
Kansas	216	1	11,017	469	136	0%	4%
Utah	105	1	14,064	11,014	109	-29%	0%
Maine	13	0	3,028	2,663	94	-29%	-29%
Vermont	10	0	2,369	2,087	93	-18%	N/A
Oregon	59	2	5,221	1,015	89	-8%	130%
West Virginia	78	3	4,474	3,326	85	1%	223%
Montana	153	3	4,929	3,366	75	1%	30%
Wyoming	22	0	5,332	4,453	50	-29%	-25%
Alaska	82	1	5,302	1,858	37	-7%	0%
Hawaii	143	3	2,795	1,176	27	265%	200%

^{*}Change from 14d ago:
Compares 14d-avgs. of Daily New Cases/Deaths
today with 14d-avgs. from 14d ago

Deaths in **Tennessee** increased 13% in last 7 days

Sorted by Total Deaths / 1M
N/As and negative deaths are due to states
revising and updating case counts



United States: Raw Volume



1 - 26

	Today		Total Since 22 Jan			Change from 14d Ago [*] in 14 day avg of daily new	
	New Confirmed	New Deaths	Total Confirmed	Total Recovered	Total Deaths	Confirmed	Deaths
New York	700	10	422,703	73,842	32,797	155%	-15%
New Jersey	463	-5	185,938	33,223	15,885	457%	-6%
California	12,430	230	591,376	N/A	10,753	-20%	15%
Texas	6,277	305	523,977	367,354	9,527	-14%	28%
Florida	8,109	212	550,901	N/A	8,765	-34%	34%
Massachusetts	0	0	121,707	99,021	8,751	16%	-19%
Illinois	1,645	15	199,893	N/A	7,881	27%	0%
Pennsylvania	902	37	125,918	94,481	7,380	-13%	41%
Michigan	476	6	98,689	63,636	6,539	-3%	27%
Georgia	3,565	105	226,153	N/A	4,456	-5%	48%
Connecticut	22	6	50,706	8,721	4,450	-39%	-44%
Louisiana	1,179	43	134,304	103,512	4,356	-25%	13%
Arizona	706	148	189,443	26,418	4,347	-43%	-12%
Ohio	1,422	26	104,248	82,310	3,734	-12%	-8%
Maryland	541	8	97,384	5,956	3,612	-2%	-2%
Indiana	660	17	76,522	57,209	3,086	12%	5%
Virginia	776	8	102,521	13,247	2,352	0%	71%
N. Carolina	996	42	139,739	116,969	2,290	-21%	39%
S. Carolina	844	46	102,974	40,837	2,144	-27%	-14%
Mississippi	1,081	45	69,374	49,836	1,989	-23%	335%
Alabama	935	35	104,786	41,523	1,882	-15%	5%
Colorado	315	1	51,737	5,608	1,875	-17%	-90%
Washington	551	8	64,702	N/A	1,724	-10%	14%
Minnesota	464	17	62,303	55,855	1,724	2%	34%
Missouri	1,516	8	62,956	N/A	1,354	2%	21%
Tennessee	1,478	18	126,393	87,290	1,289	-19%	14%

27 - 51

	Today		Total Since 22 Jan			Change from 14d Ago [*] in 14 day avg of daily new	
	New Confirmed	New Deaths	Total Confirmed	Total Recovered	Total Deaths	Confirmed	Deaths
Rhode Island	76	2	20,129	1,929	1,018	15%	-45%
Wisconsin	478	5	62,263	52,350	1,011	-9%	19%
Nevada	528	15	58,048	1,385	996	-21%	-51%
Iowa	452	7	49,973	38,657	953	-13%	14%
Kentucky	1,152	7	36,945	8,893	790	2%	-16%
New Mexico	173	2	22,816	9,612	695	-38%	-16%
Oklahoma	670	9	45,398	37,988	627	-9%	14%
DC	63	0	12,959	10,300	593	-1%	-31%
Delaware	66	1	15,765	8,519	592	-24%	-97%
Arkansas	685	6	51,096	42,998	572	-4%	175%
New Hampshire	26	1	6,887	6,162	420	-11%	-53%
Kansas	629	4	32,097	1,367	397	0%	4%
Oregon	248	7	22,022	4,282	375	-8%	130%
Nebraska	214	5	29,244	21,312	356	3%	-16%
Utah	338	2	45,090	35,311	351	-29%	0%
Idaho	536	0	26,134	9,548	246	-11%	16%
West Virginia	139	6	8,018	5,960	153	1%	223%
South Dakota	102	1	9,815	8,606	147	19%	0%
Maine	18	0	4,070	3,579	126	-29%	-29%
North Dakota	85	2	7,970	6,815	120	5%	89%
Montana	164	3	5,268	3,598	80	1%	30%
Vermont	6	0	1,478	1,302	58	-18%	
Hawaii	202	4	3,958	1,665	38	265%	200%
Wyoming	13	0	3,086	2,577	29	-29%	-25%
Alaska	60	1	3,879	1,359	27	-7%	0%

^{*}Change from 14d ago:
Compares 14d-avgs. of Daily New Cases/Deaths
today with 14d-avgs. from 14d ago

Confirmed cases in **Illinois** increased 29% in last 30 days

Sorted by Total Deaths / 1M
N/As and negative deaths are due to states
revising and updating case counts

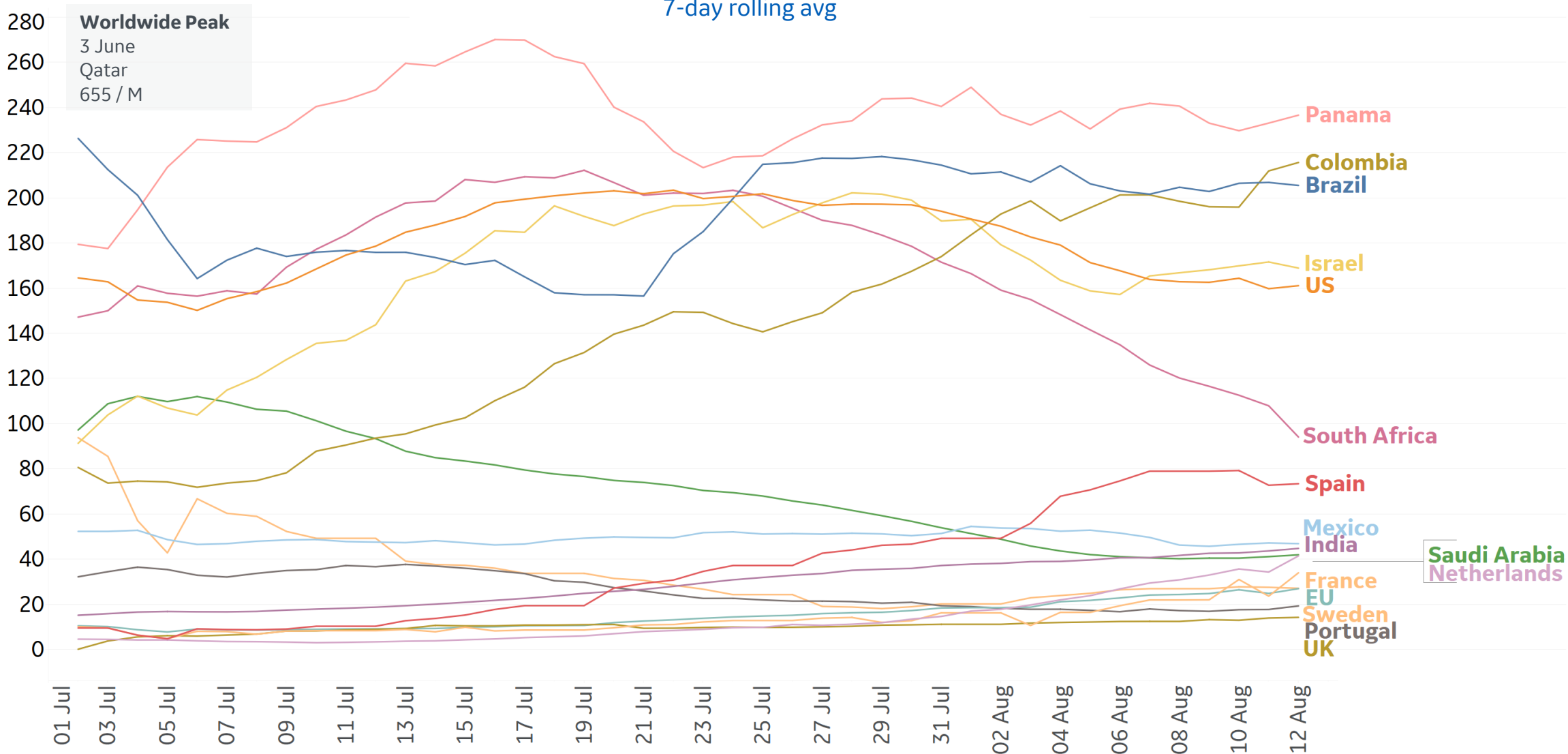


New Confirmed Cases in Select Countries



Daily New Confirmed Cases / 1M

7-day rolling avg





New Deaths in Select Countries

Updated 13 August 2020, 3:30 GMT

8

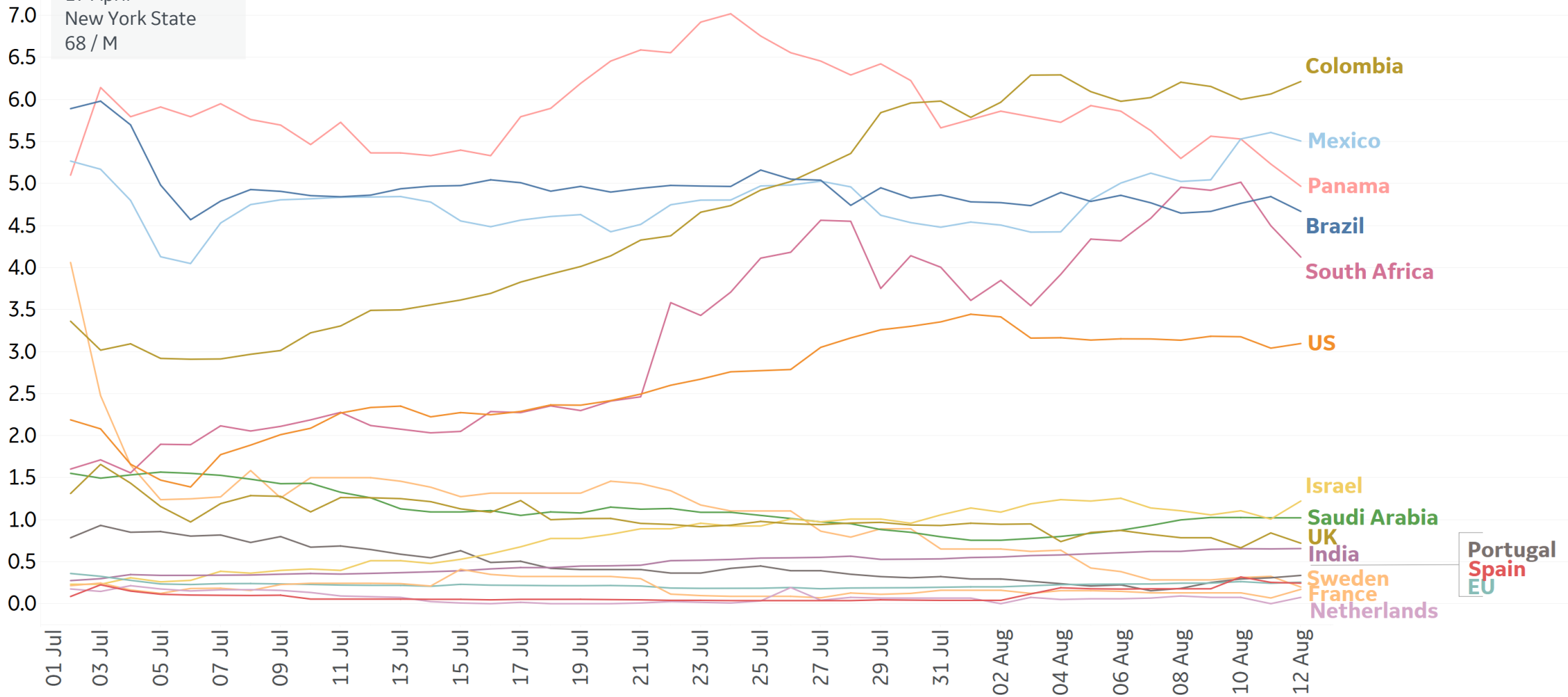
Daily New Deaths / 1M 7-day rolling avg

Worldwide Peak

17 April

New York State

68 / M

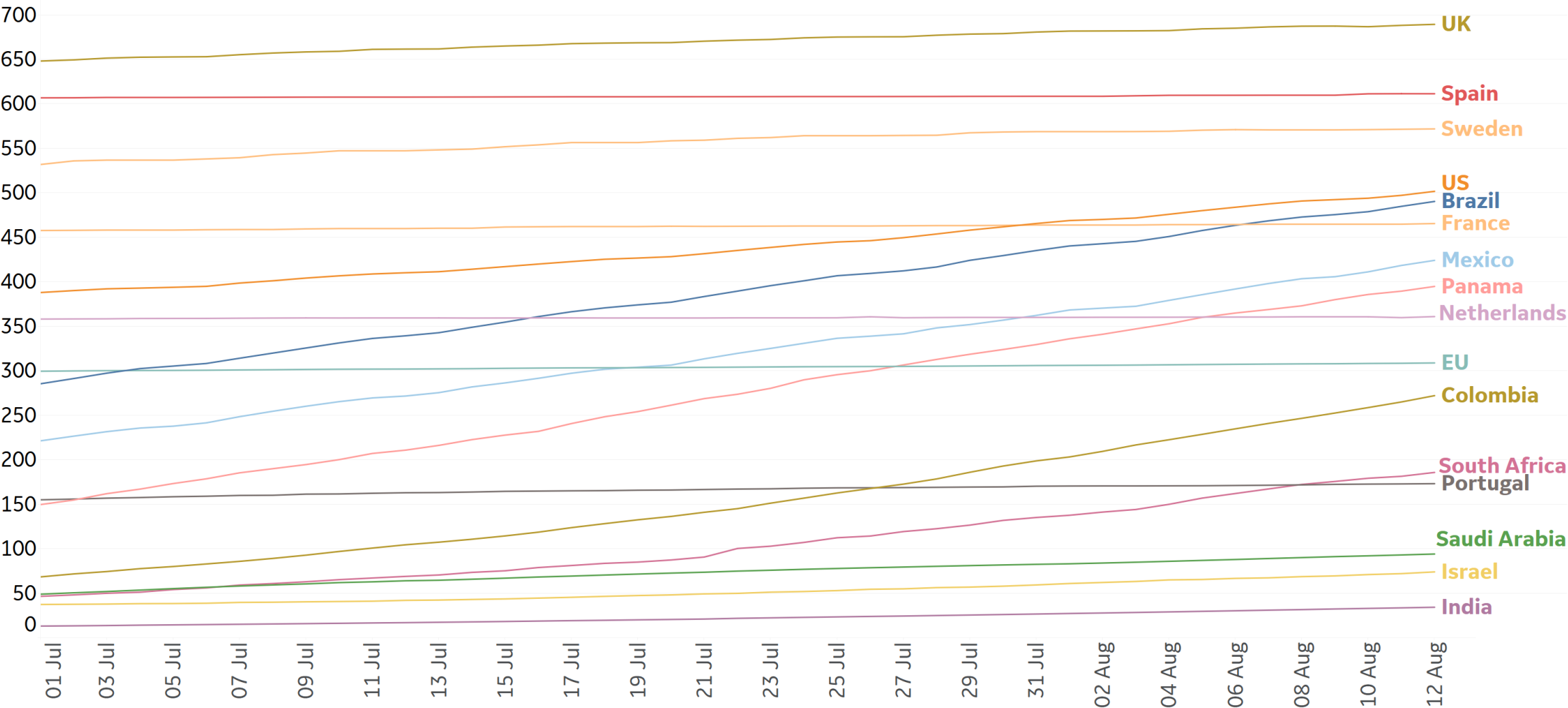




Cumulative Deaths in Select Countries



Cumulative Deaths / 1M

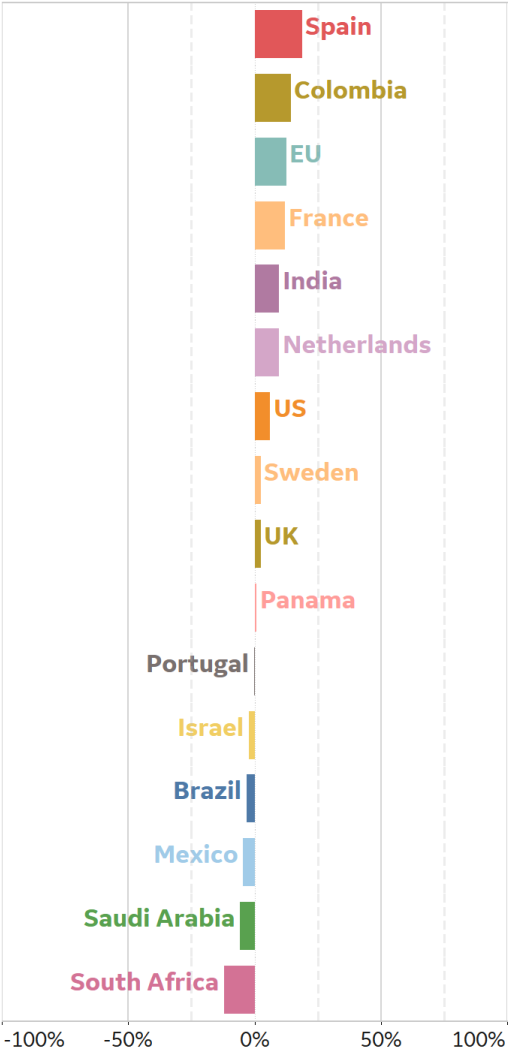




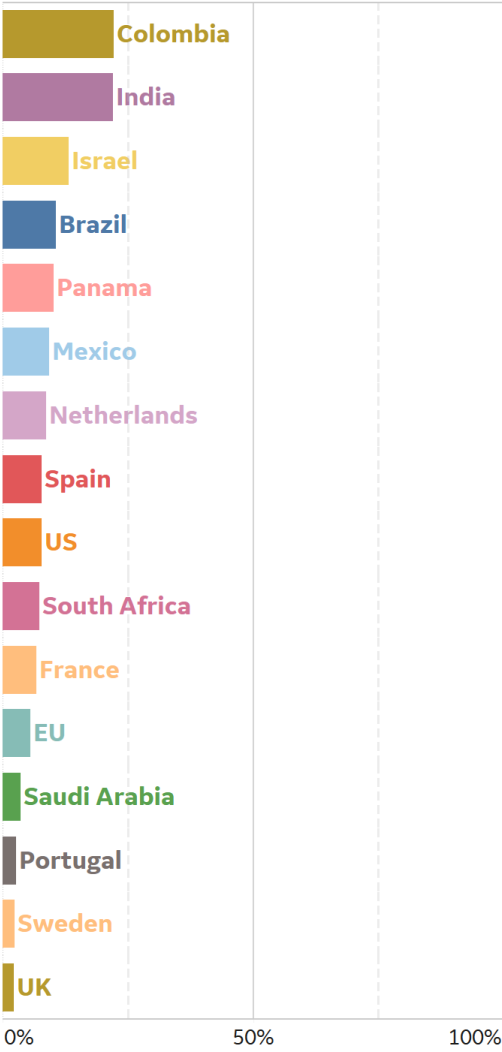
% Change in Case Volume in Select Countries

Over Previous 7 days

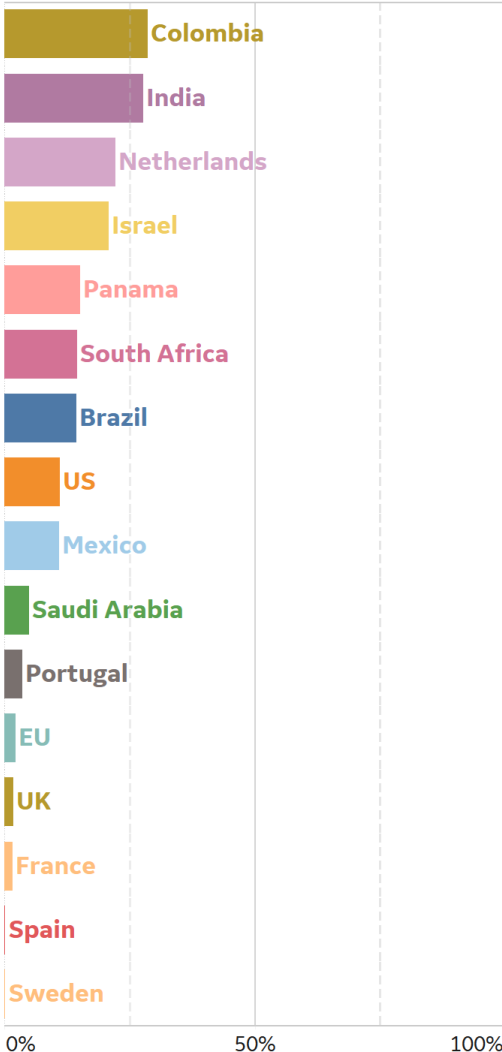
Active Cases



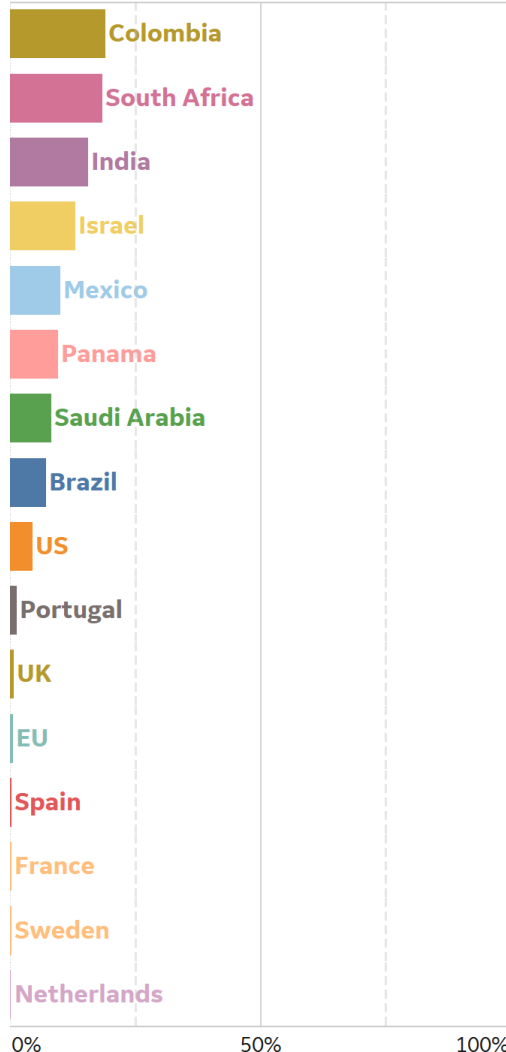
Confirmed Cases



Reported Recoveries

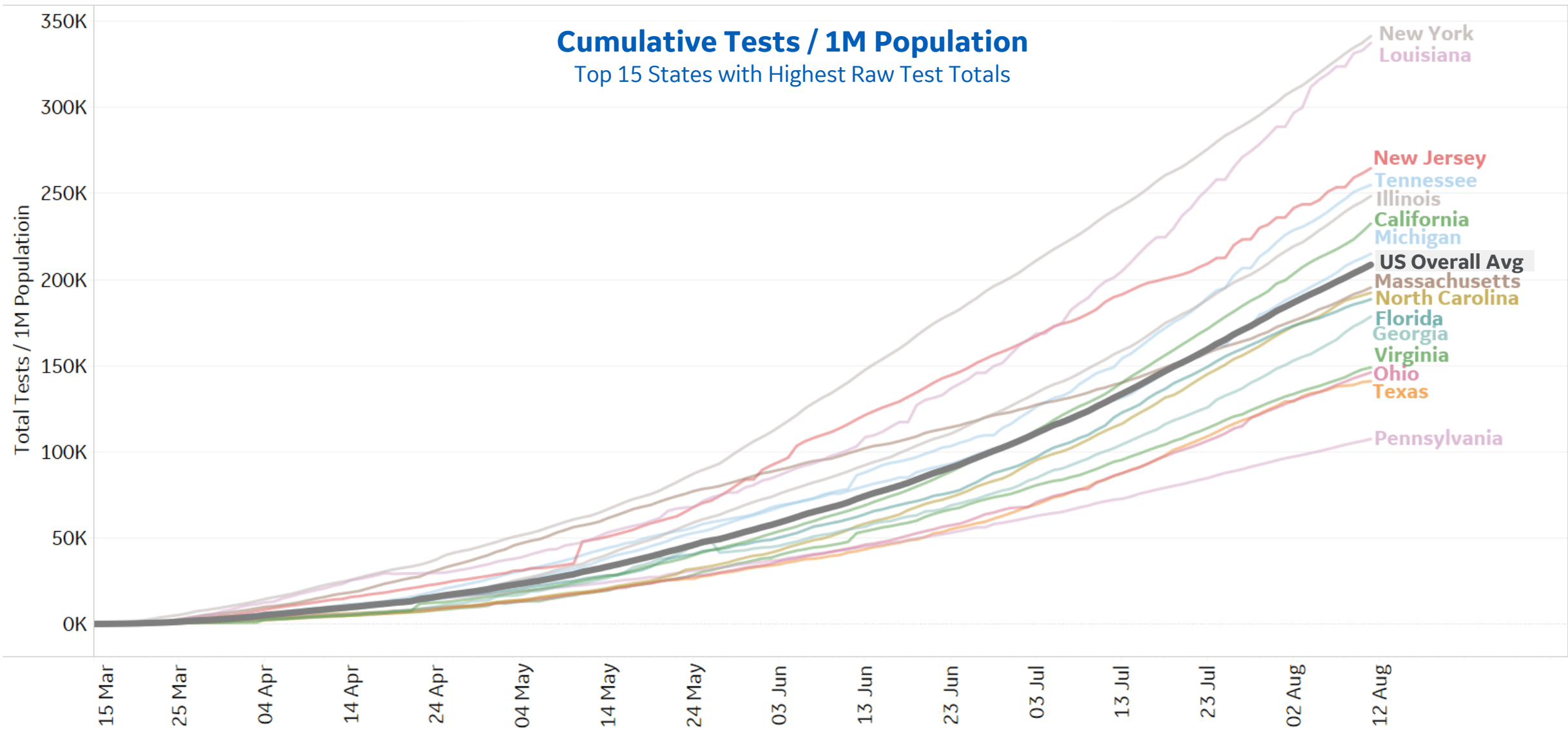


Reported Deaths



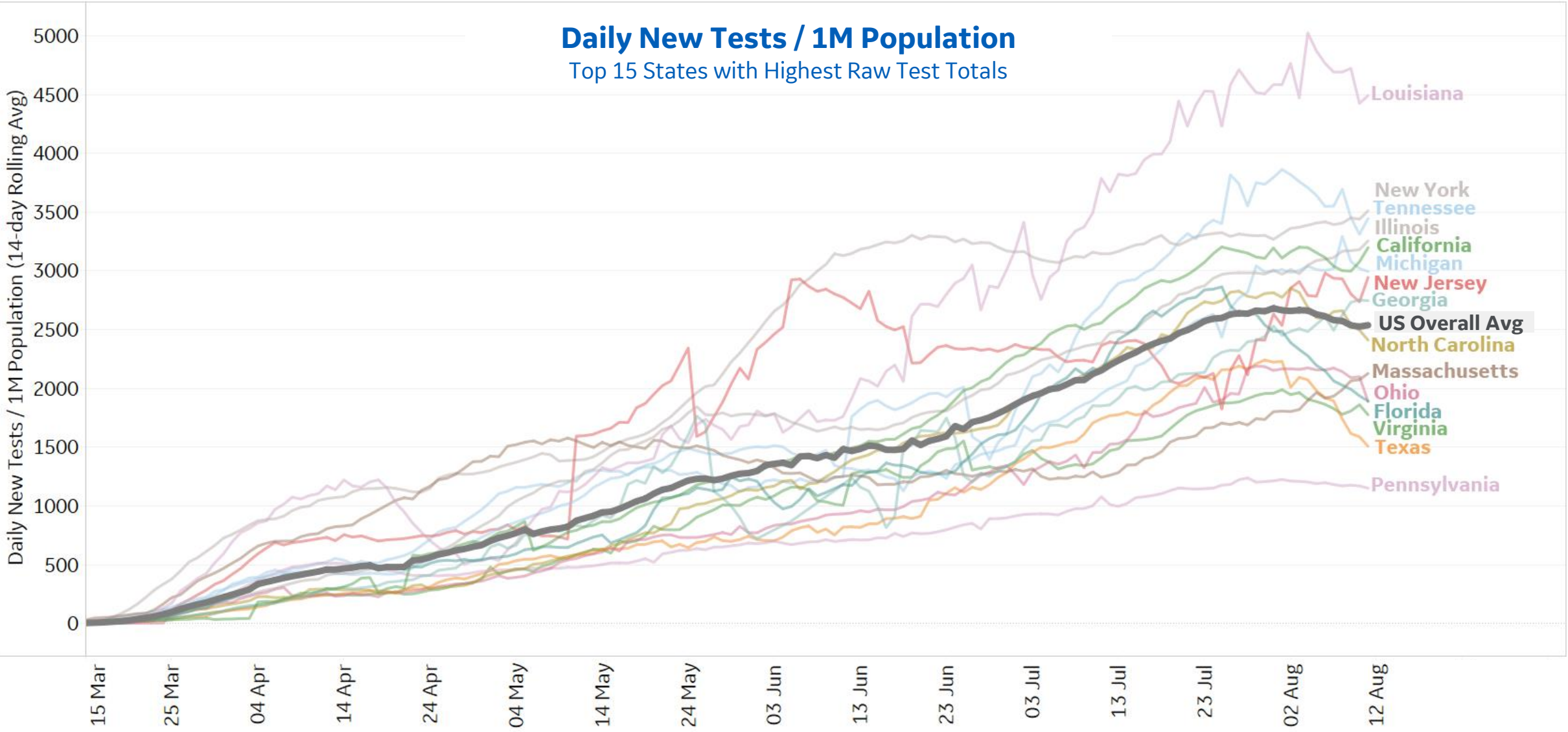


Testing in Select US States





Testing in Select US States





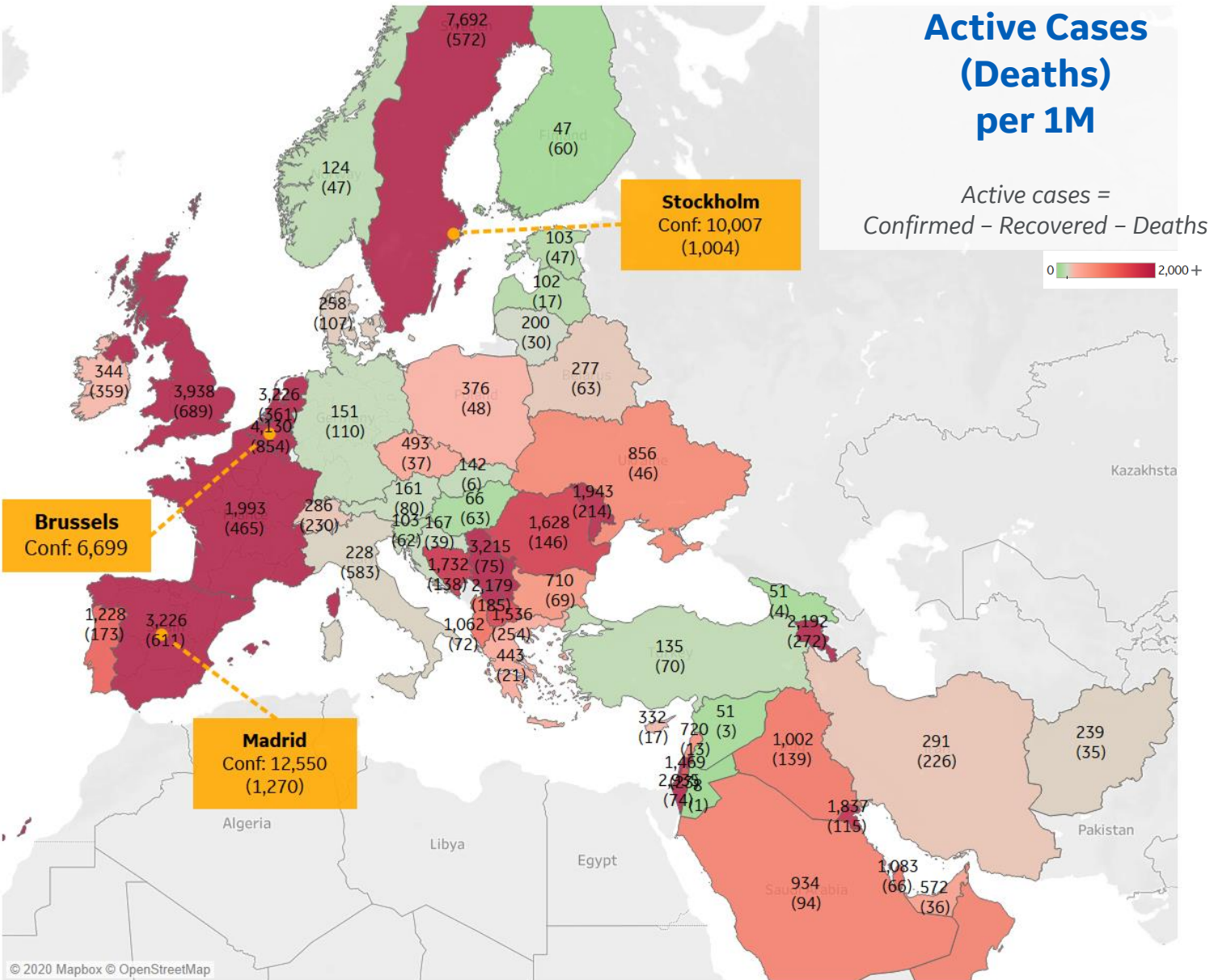
Per 1M in Region

	Today	Change
Active Cases	1,162	+1%
Confirmed	35 new	+1%
Deaths	1 new	+0.3%
Recovered	19 new	+1%

Most Active Cases per 1M

Sweden	7,692
Belgium	4,130
UK	3,938
Netherlands	3,226
Spain	3,226
Serbia	3,215
Israel	2,935
Armenia	2,192
Kosovo	2,179
France	1,993

* Excludes regions with population < 1M





Per 1M in Region

	Today	Change
Active Cases	3,694	+0.4%
Confirmed	15 new	+0.3%
Deaths	1 new	+0.2%
Recovered	0 new	+0%

Most Active Cases per 1M

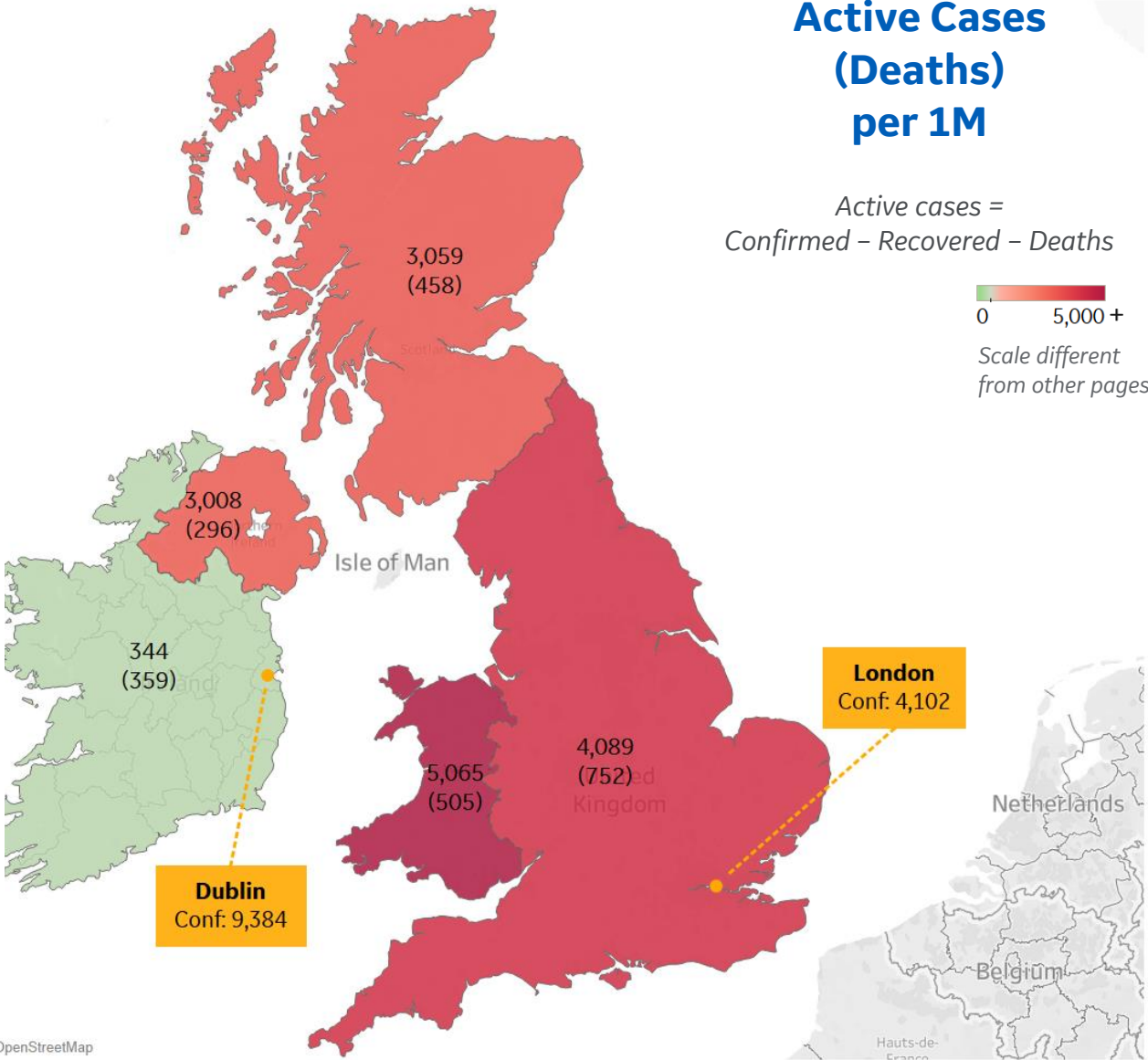
Wales	5,065
England	4,089
Scotland	3,059
Northern Ireland	3,008
Ireland	344

Active Cases (Deaths) per 1M

Active cases =
Confirmed – Recovered – Deaths

0 5,000 +

Scale different
from other pages



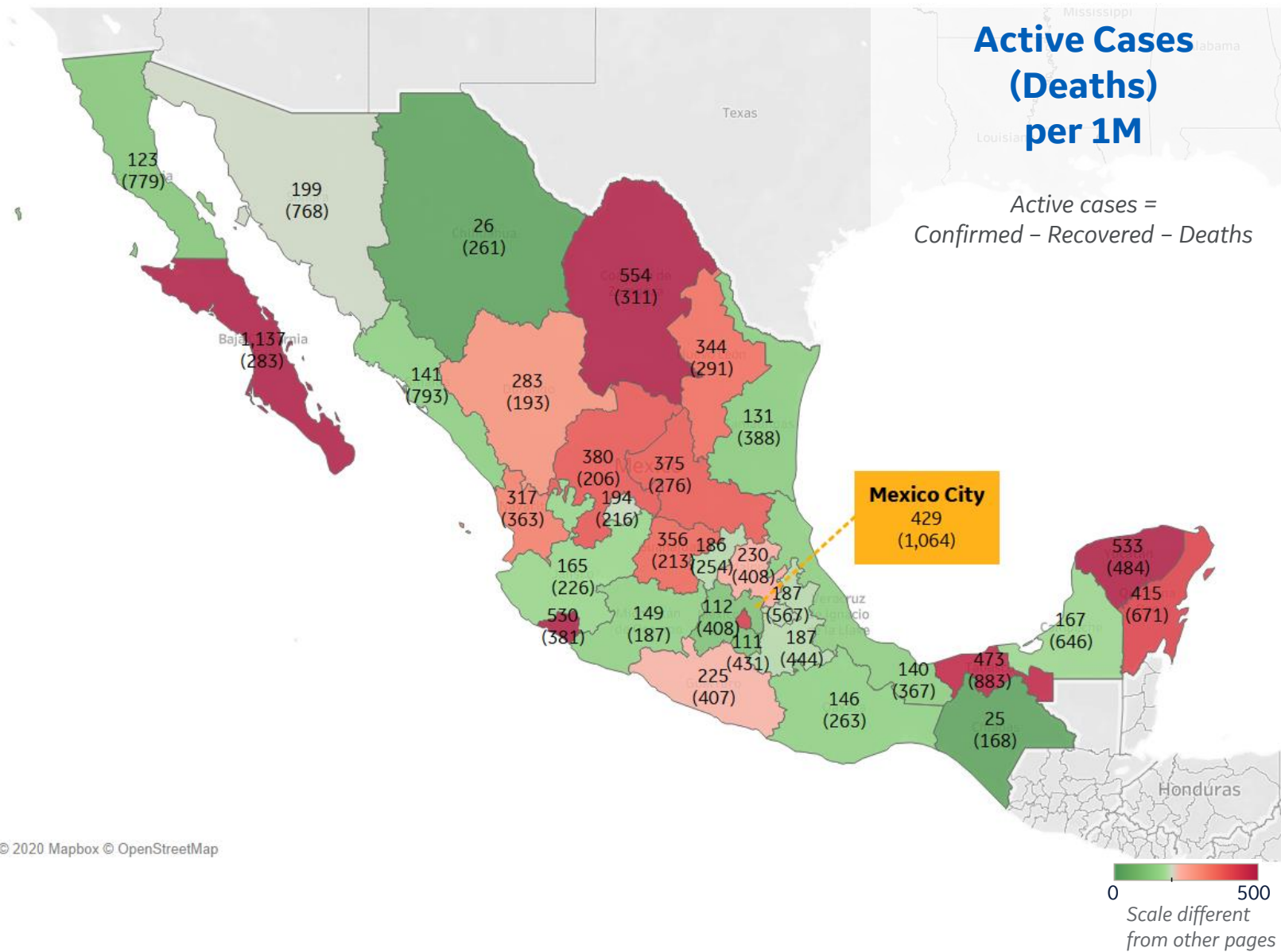


Per 1M in Region

	Today	Change
Active Cases	2,608	-1%
Confirmed	259 new	+2%
Deaths	6 new	+1%
Recovered	268 new	+2%

Most Active Cases per 1M

Baja California Sur	1,137
Coahuila	554
Yucatan	533
Colima	530
Tabasco	473
Distrito Federal	429
Quintana Roo	415
Zacatecas	380
San Luis Potosi	375
Guanajuato	356



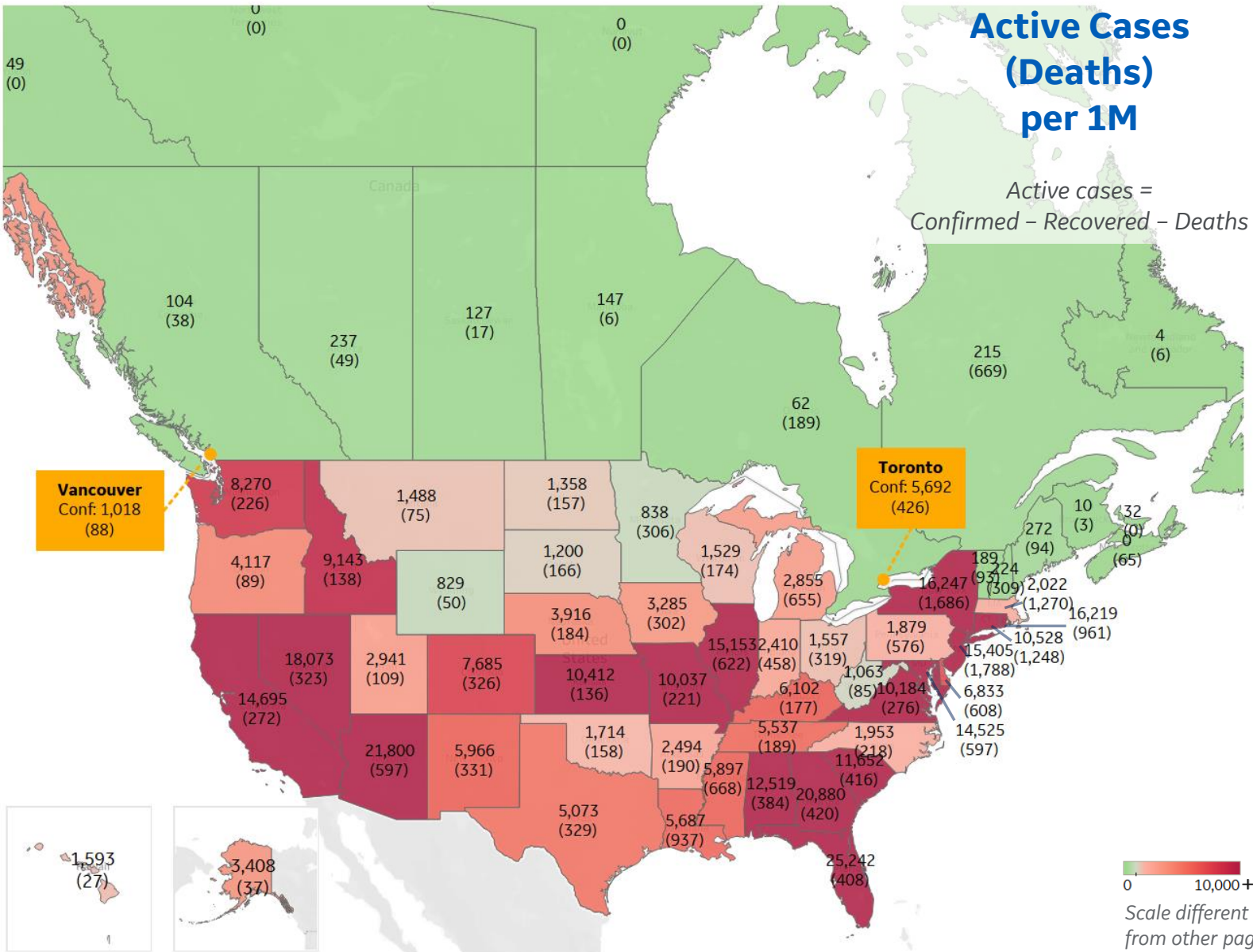


Per 1M in Region

	Today	Change
Active Cases	8,901	+0%
Confirmed	152 new	+1%
Deaths	4 new	+0.9%
Recovered	106 new	+2%

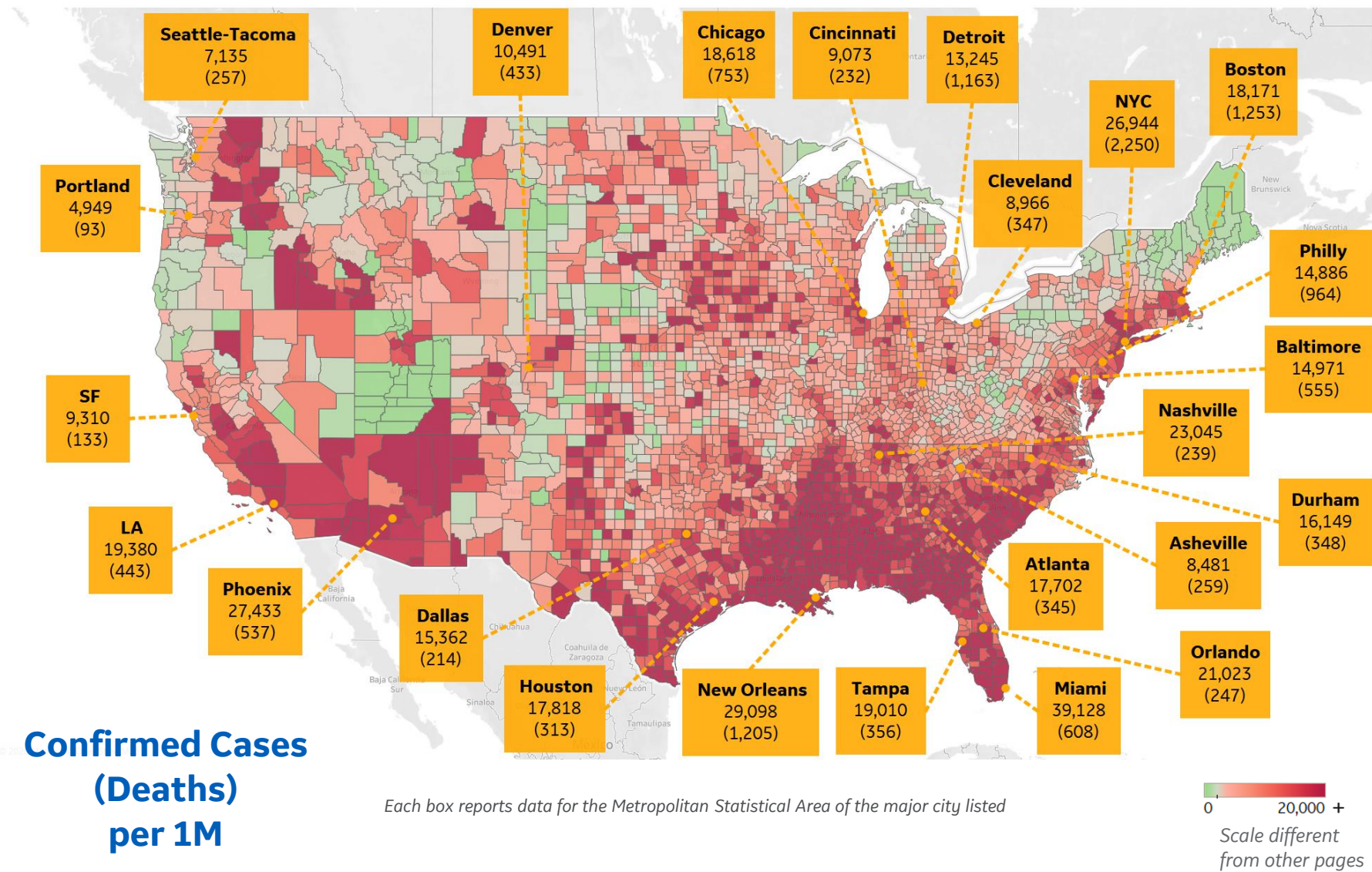
Most Active Cases per 1M

Florida	25,242
Arizona	21,800
Georgia	20,880
Nevada	18,073
New York	16,247
Rhode Island	16,219
New Jersey	15,405
Illinois	15,153
California	14,695
Maryland	14,525





US by County & Metro, Total to Date



Top 10 Northeast Counties

Total Confirmed Cases / 1M

Rockland County, NY	42,868
Westchester County, NY	37,544
Passaic County, NJ	35,367
Nassau County, NY	32,250
Union County, NJ	30,161
Suffolk County, NY	29,763
Hudson County, NJ	29,371
Orange County, NY	29,072
New York City*	27,436
Suffolk County, MA	27,387

Top 10 Other US Counties

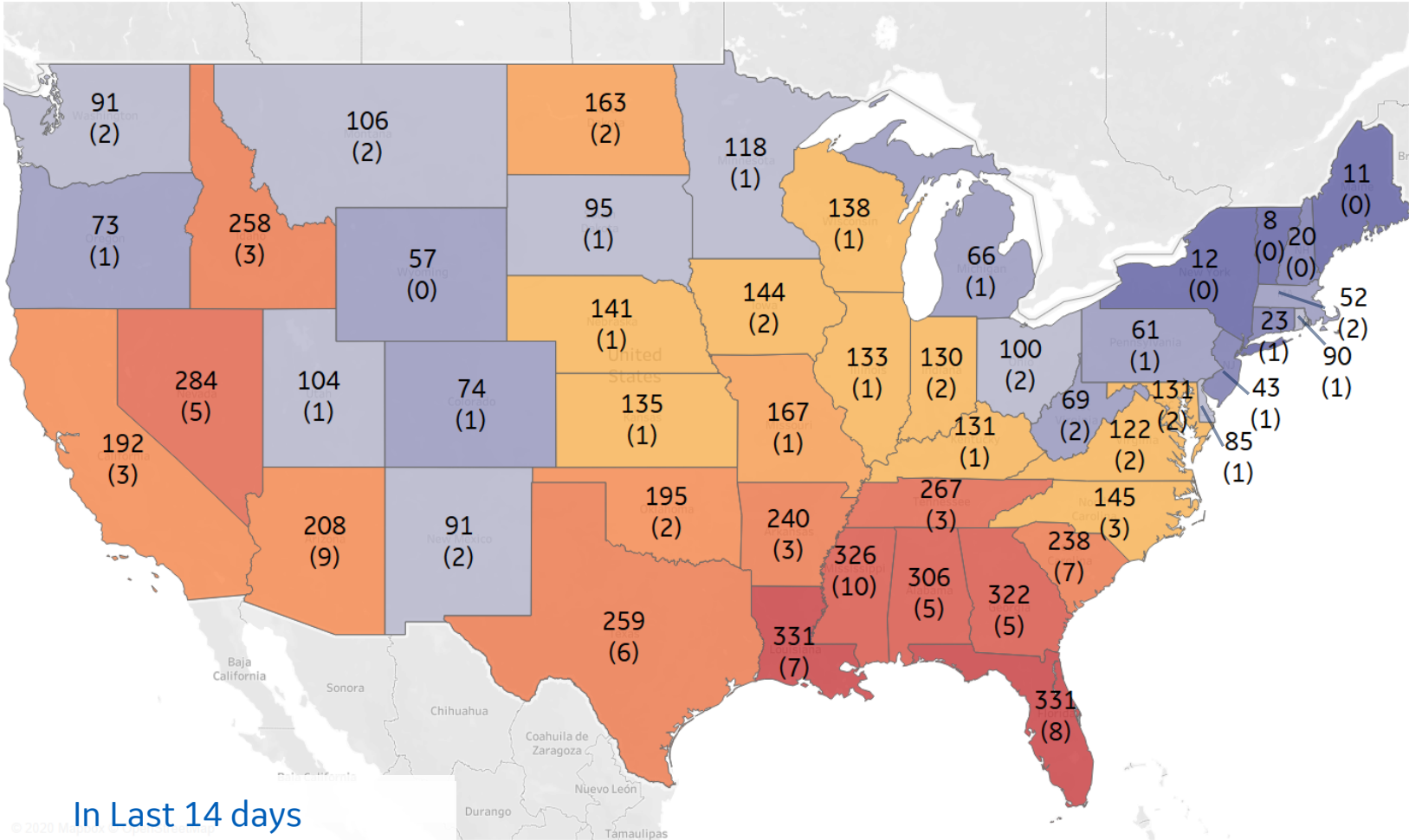
Total Confirmed Cases / 1M

Miami-Dade County, FL	51,260
Nueces County, TX	44,809
Yakima County, WA	41,503
Cameron County, TX	40,337
Jefferson Parish, LA	35,860
Broward County, FL	32,815
Webb County, TX	31,860
Escambia County, FL	31,192
Charleston County, SC	30,517
Davidson County, TN	30,316

Note: Includes counties ≥ 250K population
* New York City counties aggregated into one reporting area



US, New in Last 14 days



Top 10 by New Confirmed

Avg New Confirmed Cases / 1M

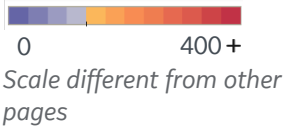
Florida	331
Louisiana	331
Mississippi	326
Georgia	322
Alabama	306
Nevada	284
Tennessee	267
Texas	259
Idaho	258
Arkansas	240

Top 10 by New Deaths

Avg New Deaths / 1M

Mississippi	10
Arizona	9
Florida	8
Louisiana	7
South Carolina	7
Texas	6
Alabama	5
Georgia	5
Nevada	5
Arkansas	3

In Last 14 days
Avg New Confirmed Cases
(Avg New Deaths)
per 1M





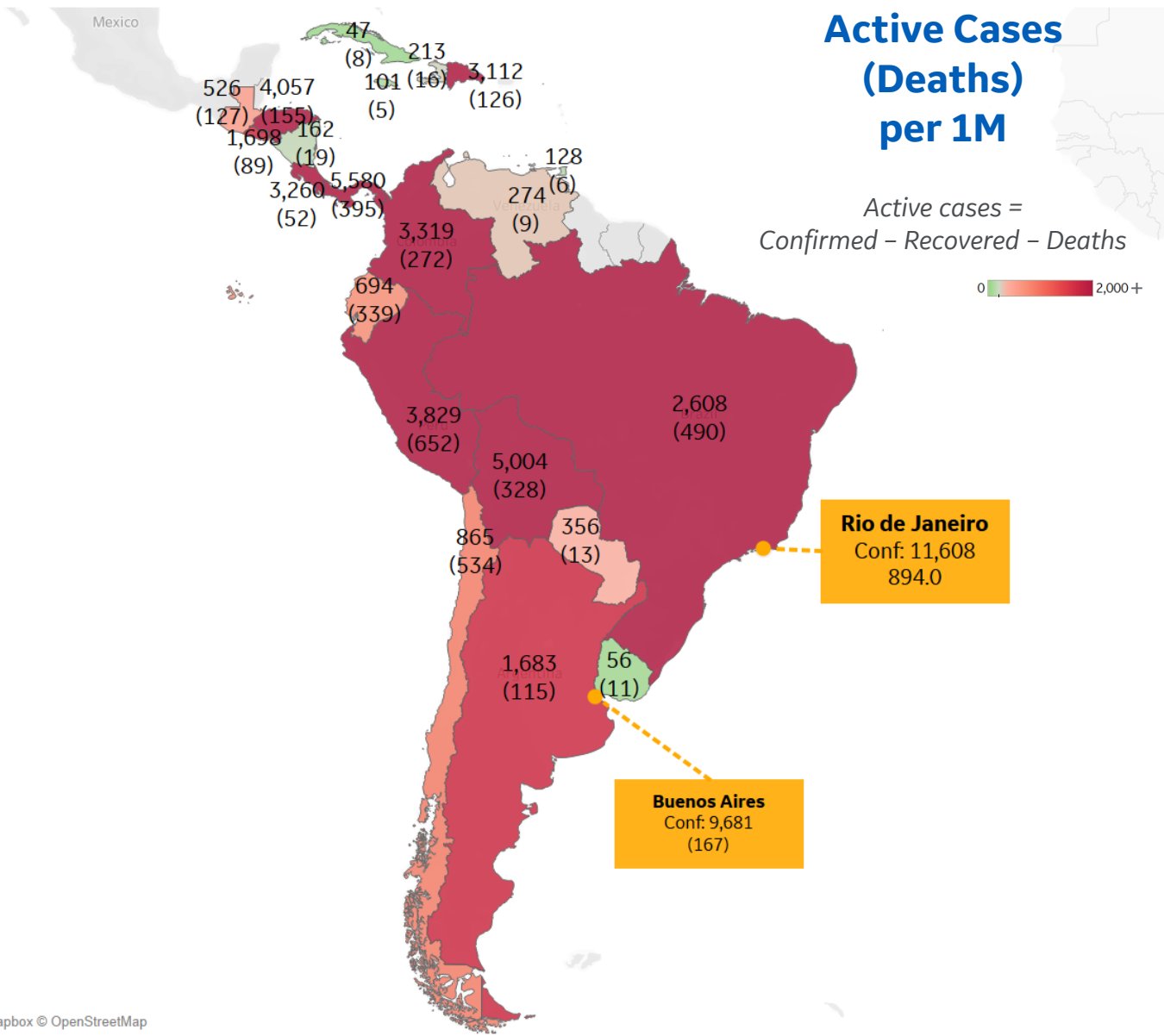
Per 1M in Region

	Today	Change
Active Cases	2,239	-1%
Confirmed	165 new	+2%
Deaths	4 new	+1%
Recovered	180 new	+2%

Most Active Cases per 1M

Panama	5,580
Bolivia	5,004
Honduras	4,057
Peru	3,829
Colombia	3,319
Costa Rica	3,260
Dom. Rep.	3,112
Brazil	2,608
El Salvador	1,698
Argentina	1,683

* Excludes regions with population < 1M





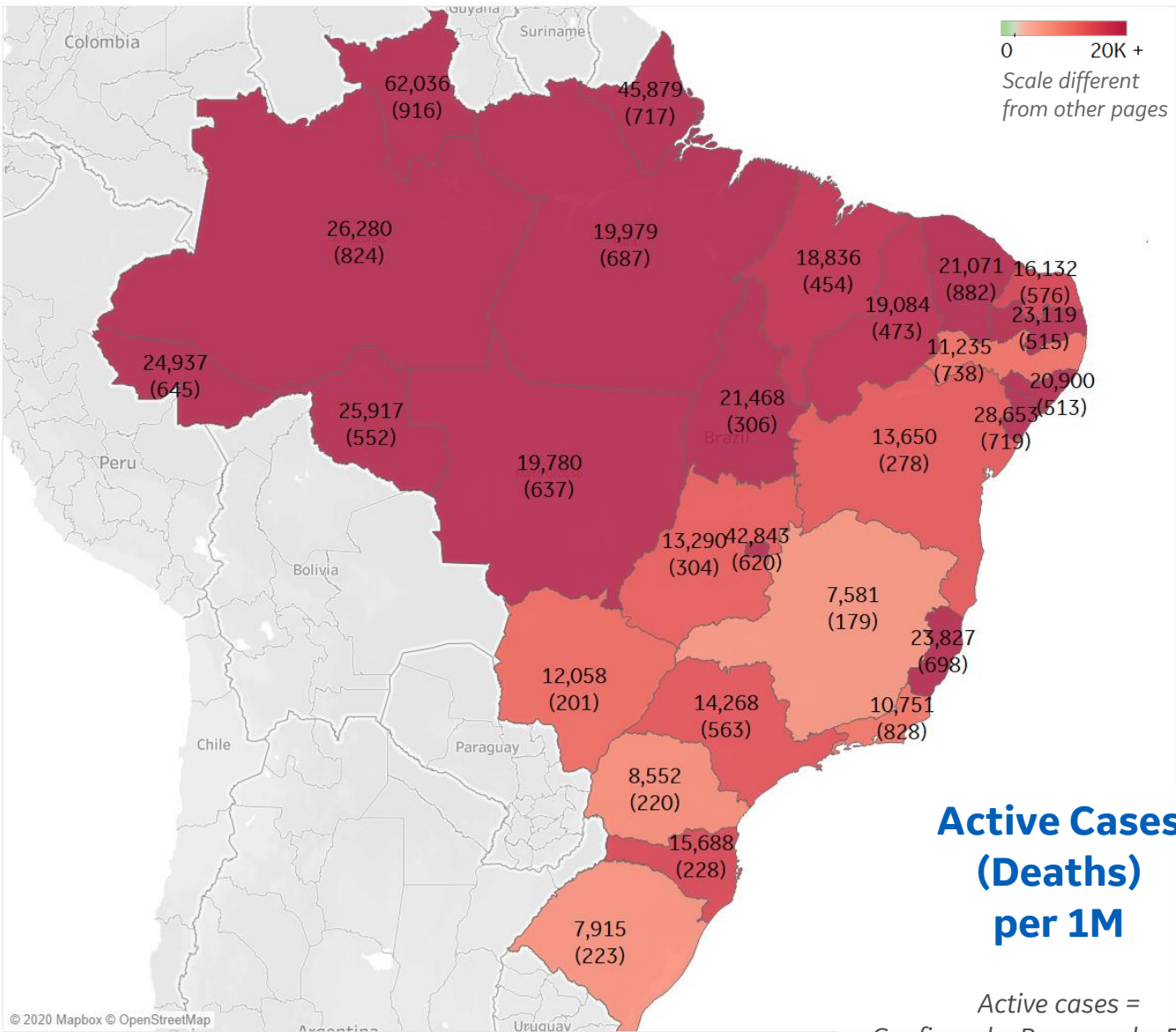
Per 1M in Region

	Today	Change
Active Cases	2,608	-1%
Confirmed	259 new	+2%
Deaths	6 new	+1%
Recovered	268 new	+2%

Most Active Cases per 1M

Distrito Federal	42,843
Sergipe	28,653
Amazonas	26,280
Rondônia	25,917
Espírito Santo	23,827
Paraíba	23,119
Tocantins	21,468
Ceará	21,071
Alagoas	20,900
Pará	19,979

* Excludes regions with population < 1M





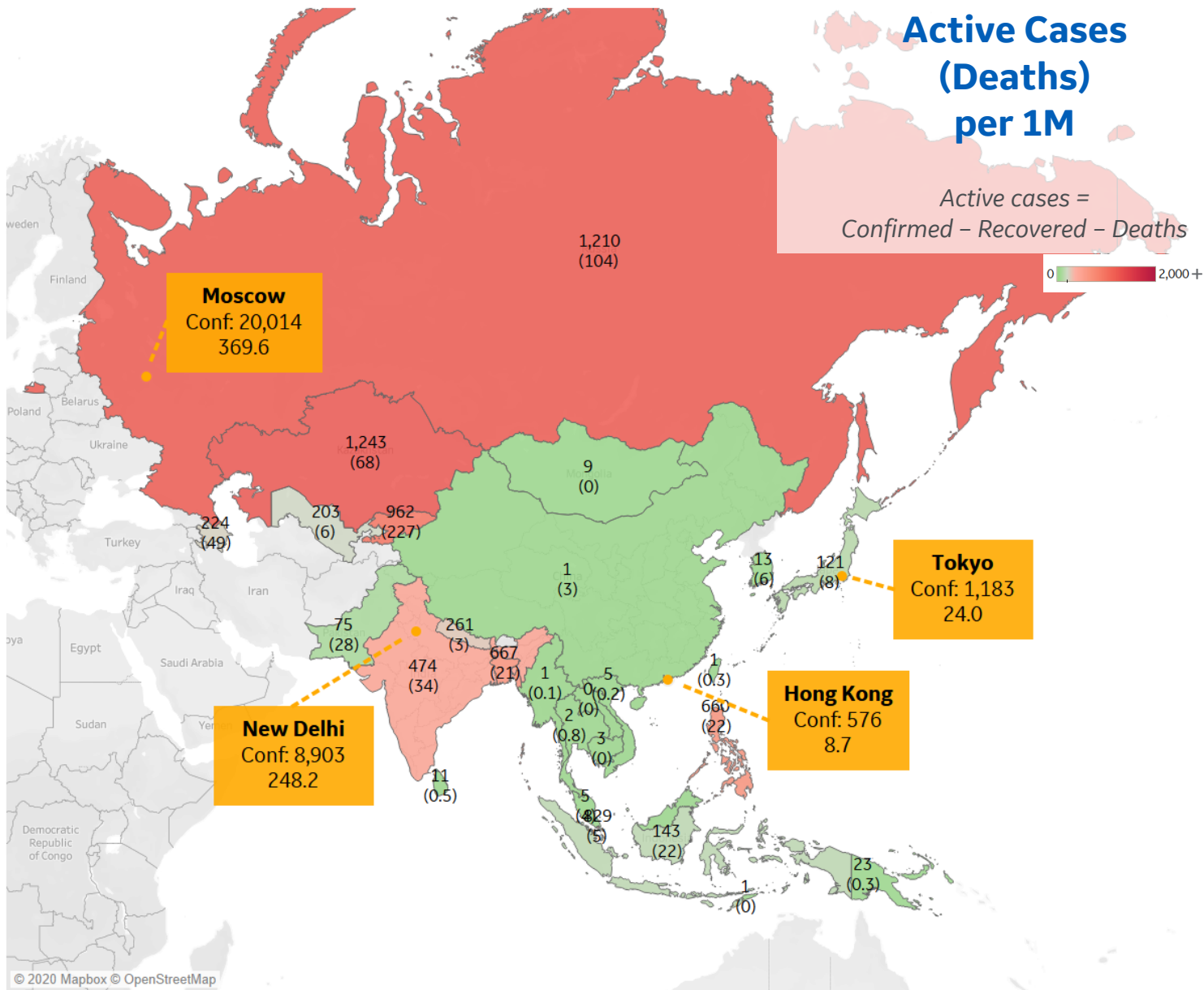
Per 1M in Region

	Today	Change
Active Cases	262	+0.8%
Confirmed	20 new	+2%
Deaths	0.3 new	+2%
Recovered	17 new	+2%

Most Active Cases per 1M

Kazakhstan	1,243
Russia	1,210
Kyrgyzstan	962
Singapore	829
Bangladesh	667
Philippines	660
India	474
Nepal	261
Azerbaijan	224
Uzbekistan	203

* Excludes regions with population < 1M





Per 1M in Region

	Today	Change
Active Cases	297	-2%
Confirmed	8 new	+1%
Deaths	0.3 new	+2%
Recovered	13 new	+3%

Most Active Cases per 1M

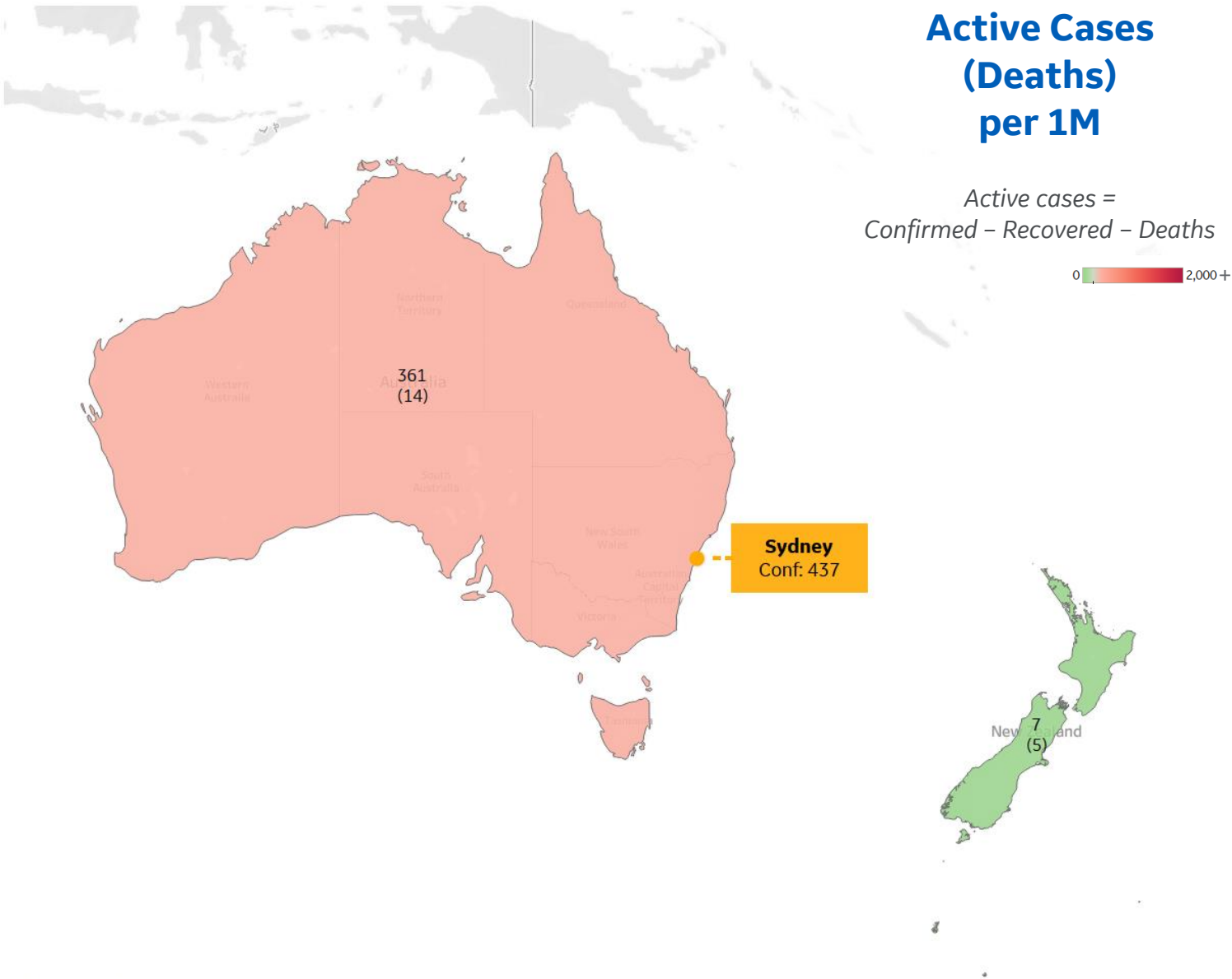
Australia	361
New Zealand	7

* Excludes regions with population < 1M

Active Cases (Deaths) per 1M

Active cases =
Confirmed - Recovered - Deaths

0 2,000 +





Sources



*** Per 1M = Per 1 Million Population unless otherwise noted*

Johns Hopkins Coronavirus Resource Center:

<https://coronavirus.jhu.edu/map.html>

Worldometer Coronavirus Reporting:

<https://www.worldometers.info/coronavirus/>

Public Health England:

<https://www.gov.uk/government/publications/covid-19-track-coronavirus-cases>

US Department of Homeland Security, Homeland Infrastructure Foundation-Level Data:

<https://hifld-geoplatform.opendata.arcgis.com/datasets/hospitals>

City of New York, NYC Health:

<https://www1.nyc.gov/site/doh/covid/covid-19-data.page>

Chicago Coronavirus Latest Data:

<https://www.chicago.gov/city/en/sites/covid-19/home/latest-data.html>

National Health Commission of the PRC:

<http://www.nhc.gov.cn/xcs/yqtb/202003/bf66696029ba420098164607240074f8.shtml>

Korean Centers for Disease Control and Prevention:

http://www.cdc.go.kr/cdc_eng/

CDC, Severe Outcomes Among Patients with Coronavirus Disease 2019 (COVID-19):

<https://www.cdc.gov/mmwr/volumes/69/wr/mm6912e2.htm>

Italian Department of Civil Protection, COVID Monitoring:

<http://opendatadpc.maps.arcgis.com/apps/opsdashboard/index.html#/b0c68bce2cce478eaac82fe38d4138b1>

The COVID Tracking Project:

<https://covidtracking.com/data/>

UK Office for National Statistics

<https://www.ons.gov.uk/peoplepopulationandcommunity/birthsdeathsandmarriages/deaths/bulletins/deathsregisteredweeklyinenglandandwalesprovisional/weekending24april2020>

WHO Europe, Surveillance Report:

<http://www.euro.who.int/en/health-topics/health-emergencies/coronavirus-covid-19/weekly-surveillance-report>

WHO Europe, Principles for Transition:

<http://www.euro.who.int/en/media-centre/sections/statements/2020/statement-transition-to-a-new-normal-during-the-covid-19-pandemic-must-be-guided-by-public-health-principles>

COVID-19 Information for Switzerland:

<https://www.corona-data.ch/>

CIA World Factbook:

<https://www.cia.gov/library/publications/resources/the-world-factbook/>

Italian Ministry of Health:

<http://www.salute.gov.it/portale/nuovocoronavirus/dettaglioContenutiNuovoCoronavirus.jsp?lingua=italiano&id=5351&area=nuovoCoronavirus&menu=vuoto>

New South Wales Government:

<https://www.health.nsw.gov.au/Infectious/diseases/Pages/covid-19-latest.aspx>

Provincial Health Services Authority of Canada. BC Center for Disease Control:

<http://www.bccdc.ca/about/news-stories/stories/2020/information-on-novel-coronavirus>

Coronavirus Cases in Japan by Prefecture, Nippon Communications Foundation:

<https://www.nippon.com/en/japan-data/h00657/coronavirus-cases-in-japan-by-prefecture.html>

Secretary of Health, Mexico:

<https://www.gob.mx/salud/en>

OECD Economic Outlooks, Statistics:

https://www.oecd-ilibrary.org/economics/data/oecd-economic-outlook-statistics-and-projections_eo-data-en

Public Health Authority of Sweden:

<https://www.folkhalsomyndigheten.se/smittskydd-beredskap/utbrott/aktuella-utbrott/covid-19/bekraftade-fall-i-sverige>

National Public Health Agency of France:

<https://www.santepubliquefrance.fr/regions/ile-de-france/documents/bulletin-regional/2020/covid-19-point-epidemiologique-en-ile-de-france-du-23-avril-2020>

Florida Department of Health, COVID-19 Response:

<https://floridahealthcovid19.gov>

CDC:

<https://www.cdc.gov/covid-data-tracker/index.html#demographics>

CDC Provisional COVID19 Deaths Counts

<https://data.cdc.gov/NCHS/Provisional-COVID-19-Death-Counts-by-Sex-Age-and-S/9bhg-hcku>

Johns Hopkins Coronavirus Resource Center:

<https://coronavirus.jhu.edu/map.html>