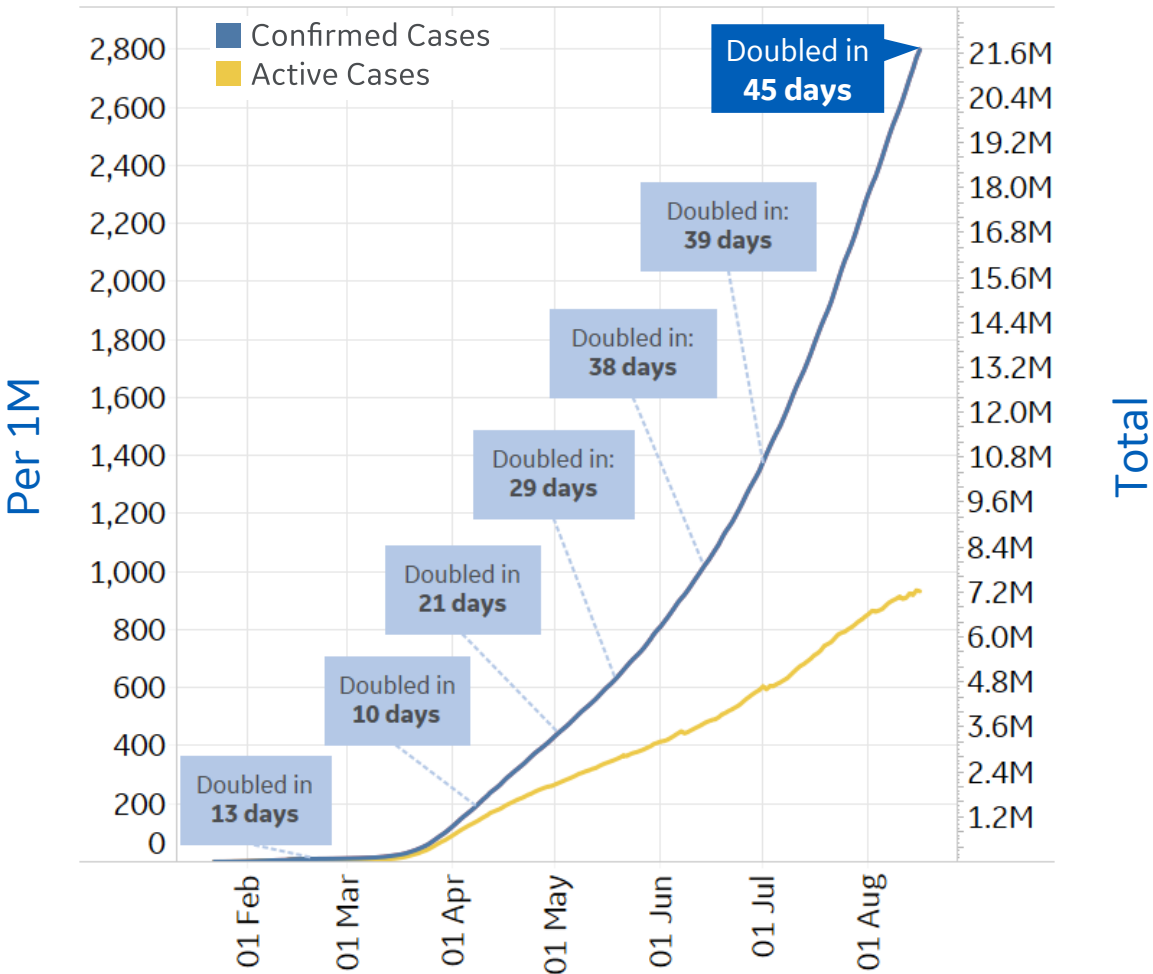




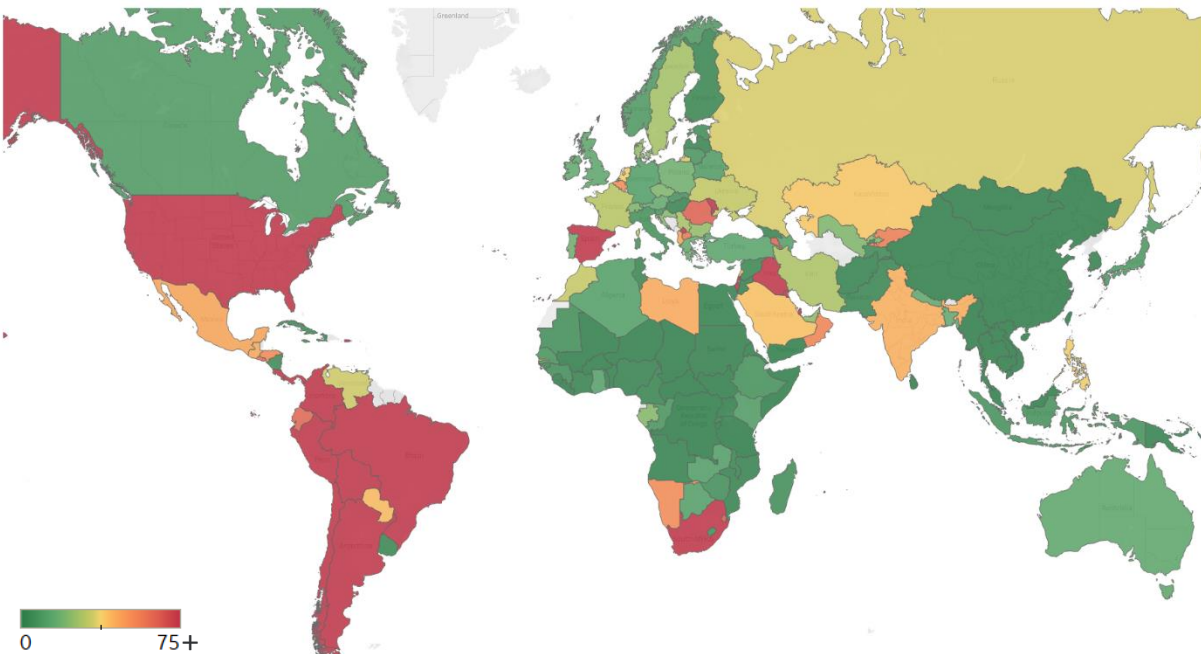
Global Confirmed & Active Cases

Trend since 22 Jan

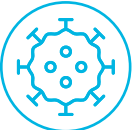


Avg. Daily New Cases / 1M
Over the last 14 days

Note: Color scales have been changed to highlight new confirmed cases.



Per 1M:	Today	Change
Active Today	932	-0.3%
Active	-3 new	-0.3%
Confirmed	27 new	+1%
Deaths	1 new	+1%
Recovered	30 new	+2%

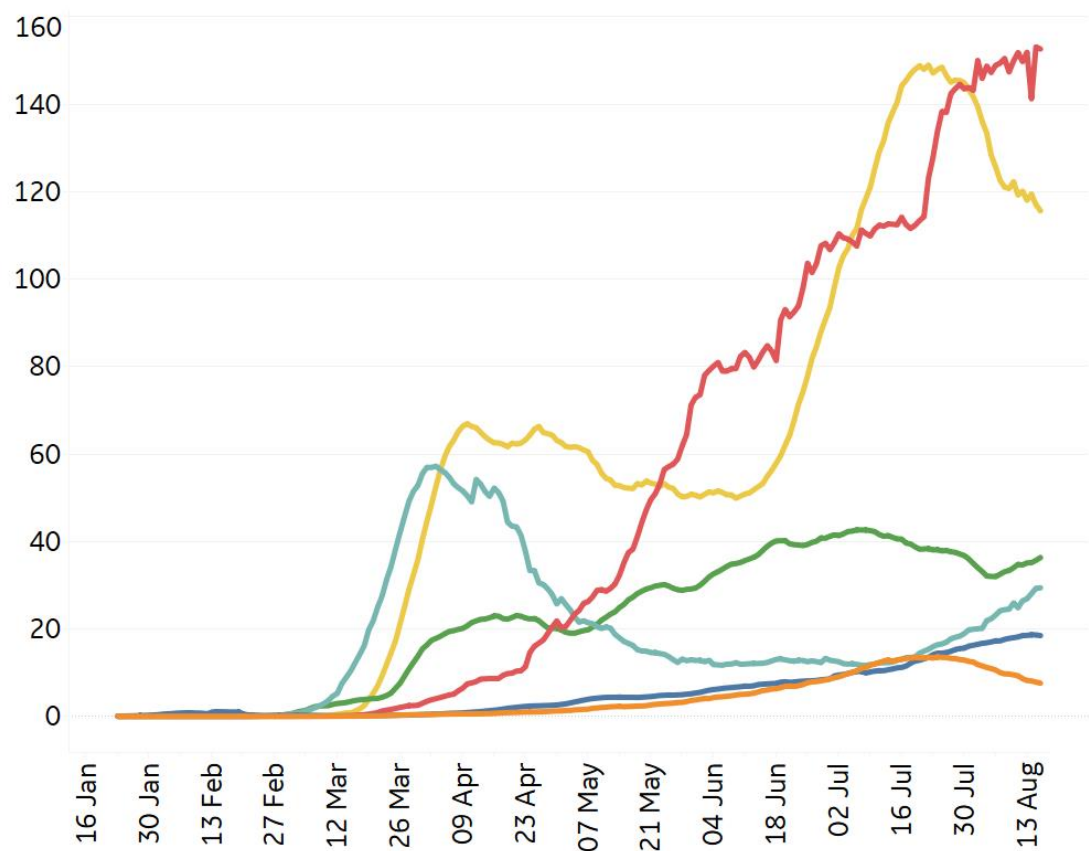


New Confirmed Cases & New Deaths

Key North America Europe Middle East Central/South America Asia Africa

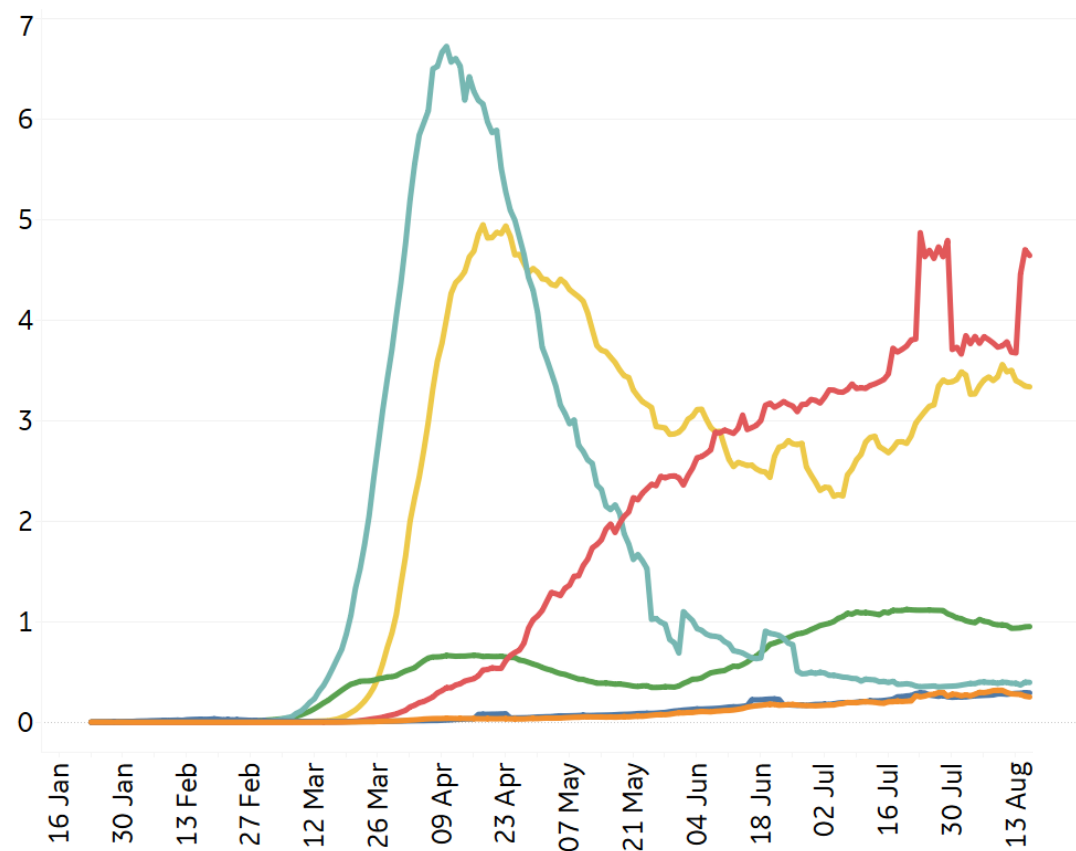
New Confirmed Cases / 1M

7-day rolling average



New Deaths / 1M

7-day rolling average





Top 50 Countries: Per 1M



1 - 25

	Today		Total Since 22 Jan			Change from 14d Ago [*] in 14 day avg of daily new	
	New Confirmed	New Deaths	Total Confirmed	Total Recovered	Total Deaths	Confirmed	Deaths
Belgium	39	0	6,758	1,553	858	38%	109%
Peru	288	7	15,947	11,081	791	29%	1%
UK	16	0	4,719	22	689	41%	-44%
Spain	0	0	7,332	3,216	612	92%	588%
Italy	8	0	4,200	3,370	585	61%	122%
Sweden	0	0	8,347	0	573	23%	-68%
Chile	107	3	20,189	18,771	547	-9%	-24%
US	127	2	16,324	5,538	514	-18%	1%
Brazil	109	3	15,714	12,491	507	-5%	-6%
France	0	0	3,875	1,287	466	109%	26%
Mexico	34	2	4,050	3,291	440	-12%	5%
Panama	295	5	18,991	12,747	410	4%	-21%
Netherlands	34	0	3,762	20	361	162%	79%
Ireland	13	0	5,520	4,732	359	172%	10%
Bolivia	103	5	8,596	3,126	348	-2%	-10%
Ecuador	48	0	5,755	4,932	344	25%	-21%
EU	11	0	3,665	1,985	310	63%	46%
Colombia	229	6	9,204	5,649	297	25%	14%
Armenia	57	0	14,060	11,671	276	-37%	-43%
North Macedo..	41	2	6,115	4,403	261	-11%	-37%
Iran	25	2	4,086	3,542	234	-5%	-18%
Switzerland	23	0	4,405	3,848	230	31%	-17%
Kyrgyzstan	32	0	6,416	5,254	229	-46%	-77%
Moldova	69	0	7,482	5,260	222	10%	-2%
Kosovo	0	0	6,110	3,772	211	-19%	24%

26 - 50

	Today		Total Since 22 Jan			Change from 14d Ago [*] in 14 day avg of daily new	
	New Confirmed	New Deaths	Total Confirmed	Total Recovered	Total Deaths	Confirmed	Deaths
South Africa	62	3	9,903	7,965	200	-48%	4%
Portugal	12	0	5,306	3,893	174	-7%	-18%
Honduras	53	1	5,099	741	159	-22%	-58%
Romania	57	2	3,663	1,694	155	10%	49%
Iraq	108	2	4,399	3,117	146	30%	-9%
Bos. and Herz.	0	0	4,816	2,932	144	-11%	16%
Dom. Rep.	70	1	7,956	4,877	134	-27%	40%
Guatemala	14	1	3,492	2,829	133	-11%	-25%
Argentina	121	1	6,518	4,684	126	23%	48%
Kuwait	119	1	17,844	15,955	117	-5%	-10%
Oman	32	2	16,270	15,212	112	-69%	47%
Russia	34	0	6,309	5,012	107	-10%	-13%
Bahrain	238	0	27,524	25,346	100	4%	10%
Saudi Arabia	35	1	8,575	7,668	98	-29%	14%
El Salvador	45	1	3,532	1,666	94	-2%	10%
Israel	52	1	10,708	7,915	79	-12%	17%
Kazakhstan	18	0	5,487	4,408	68	-50%	14%
Qatar	94	0	39,944	38,803	67	-11%	-20%
Belarus	22	1	7,357	7,098	65	-27%	-37%
Costa Rica	143	1	5,588	1,779	58	21%	32%
UAE	21	0	6,502	5,833	37	-19%	8%
West Bank an..	83	0	3,619	2,153	24	13%	18%
Gabon	0	0	3,695	2,820	23	-43%	-75%
Singapore	15	0	9,529	8,880	5	-41%	N/A
Total World	27	1	2,798	1,766	100	1%	2%

^{*}Change from 14d ago:
Compares 14d-avgs. of Daily New Cases/Deaths
today with 14d-avgs. from 14d ago

Daily new confirmed cases in **South Africa** decreased 56%
since their peak around July 24

Sorted by Total Deaths / 1M
Top 50 countries selected by Cases / 1M
Excluded countries with population < 1M

Several countries are revising and updating case counts



Top 50 Countries: Raw Volume

Updated 17 August 2020, 3:30 GMT

4

1 - 25

	Today		Total Since 22 Jan			Change from 14d Ago [*] in 14 day avg of daily new	
	New Confirmed	New Deaths	Total Confirmed	Total Recovered	Total Deaths	Confirmed	Deaths
US	42,048	571	5,403,213	1,833,067	170,052	-18%	1%
EU	4,884	68	1,631,681	883,841	138,061	63%	46%
Brazil	23,101	620	3,340,197	2,655,017	107,852	-5%	-6%
Mexico	4,448	214	522,162	424,298	56,757	-12%	5%
India	57,711	941	2,647,663	1,919,842	50,921	23%	20%
UK	1,111	0	320,343	1,486	46,791	41%	-44%
Italy	477	4	253,915	203,786	35,396	61%	122%
France	0	0	252,965	83,993	30,410	109%	26%
Spain	0	0	342,813	150,376	28,617	92%	588%
Peru	9,507	219	525,803	365,367	26,075	29%	1%
Iran	2,133	147	343,203	297,486	19,639	-5%	-18%
Russia	4,911	68	920,719	731,444	15,653	-10%	-13%
Colombia	11,643	287	468,332	287,436	15,097	25%	14%
South Africa	3,692	162	587,345	472,377	11,839	-48%	4%
Chile	2,044	57	385,946	358,828	10,452	-9%	-24%
Belgium	454	4	78,323	17,994	9,939	38%	109%
Germany	519	0	225,007	201,187	9,235	62%	31%
Canada	179	2	124,004	110,202	9,074	-21%	-11%
Netherlands	579	3	64,468	345	6,194	162%	79%
Pakistan	1,168	13	289,215	269,087	6,175	-35%	-47%
Indonesia	2,081	79	139,549	93,103	6,150	13%	-16%
Ecuador	854	5	101,542	87,022	6,070	25%	-21%
Turkey	1,192	19	249,309	230,969	5,974	25%	4%
Iraq	4,348	75	176,931	125,374	5,860	30%	-9%
Sweden	0	0	84,294	0	5,783	23%	-68%

26 - 50

	Today		Total Since 22 Jan			Change from 14d Ago [*] in 14 day avg of daily new	
	New Confirmed	New Deaths	Total Confirmed	Total Recovered	Total Deaths	Confirmed	Deaths
Argentina	5,469	66	294,569	211,702	5,703	23%	48%
Egypt	139	19	96,475	59,743	5,160	-70%	-48%
China	96	0	89,375	83,200	4,703	-44%	48%
Bolivia	1,198	55	100,344	36,491	4,058	-2%	-10%
Bangladesh	2,024	32	276,549	158,950	3,657	-1%	-6%
Saudi Arabia	1,227	39	298,542	266,953	3,408	-29%	14%
Romania	1,087	37	70,461	32,587	2,991	10%	49%
Philippines	3,335	65	161,253	112,586	2,665	63%	166%
Guatemala	249	24	62,562	50,692	2,379	-11%	-25%
Ukraine	1,695	24	93,490	49,346	2,100	44%	43%
Poland	594	8	56,684	39,130	1,877	44%	36%
Portugal	121	3	54,102	39,697	1,778	-7%	-18%
Panama	1,275	21	81,940	55,001	1,767	4%	-21%
Honduras	523	8	50,502	7,339	1,575	-22%	-58%
Dom. Rep.	764	15	86,309	52,905	1,453	-27%	40%
Kazakhstan	337	0	103,033	82,777	1,269	-50%	14%
Japan	1,023	10	56,074	40,560	1,103	24%	233%
Israel	447	11	92,680	68,510	685	-12%	17%
Belarus	208	7	69,516	67,072	610	-27%	-37%
Oman	162	10	83,086	77,680	572	-69%	47%
Kuwait	508	3	76,205	68,135	501	-5%	-10%
UAE	210	3	64,312	57,694	364	-19%	8%
Qatar	271	1	115,080	111,794	193	-11%	-20%
Singapore	86	0	55,747	51,953	27	-41%	N/A
Total World	212,487	4,181	21,672,186	13,676,868	775,244	1%	2%

*Change from 14d ago:
Compares 14d-avgs. of Daily New Cases/Deaths
today with 14d-avgs. from 14d ago

12% of all confirmed cases are in **India**

Sorted by Raw Total Deaths
Top 50countries selected by Total Cases
Excluded countries with population < 1M

Several countries are revising and updating case counts



United States: Per 1M



1 - 26

	Today		Total Since 22 Jan			Change from 14d Ago [*] in 14 day avg of daily new	
	New Confirmed	New Deaths	Total Confirmed	Total Recovered	Total Deaths	Confirmed	Deaths
New Jersey	1	0	21,105	3,751	1,791	-8%	-42%
New York	31	0	21,873	3,812	1,688	-3%	-40%
Massachusetts	57	2	17,932	14,579	1,282	4%	-3%
Connecticut	0	0	14,276	2,471	1,249	-43%	-42%
Louisiana	254	17	29,667	22,266	969	-35%	8%
Rhode Island	0	0	19,196	1,844	964	7%	-18%
DC	86	0	18,732	14,868	846	46%	117%
Mississippi	128	1	24,238	16,745	700	-35%	9%
Michigan	48	1	10,239	6,787	660	6%	48%
Illinois	123	1	16,368	N/A	628	18%	7%
Arizona	121	2	26,589	3,789	619	-57%	-26%
Delaware	56	0	16,894	8,905	609	5%	-87%
Maryland	86	0	16,576	993	602	-18%	-10%
Pennsylvania	42	0	10,082	7,680	582	-13%	14%
Indiana	110	1	11,945	8,883	465	11%	3%
Georgia	175	3	22,325	N/A	443	-12%	29%
S. Carolina	119	2	20,684	8,299	441	-33%	-21%
Florida	176	5	26,698	N/A	440	-37%	13%
Alabama	174	0	22,115	8,469	387	-30%	-20%
Texas	305	4	19,154	13,780	359	-5%	23%
Nevada	226	1	19,903	462	348	-23%	30%
New Mexico	51	1	11,164	4,956	341	-41%	-28%
Colorado	59	0	9,231	983	329	-28%	-43%
Ohio	52	0	9,264	7,437	327	-16%	-16%
New Hampshire	6	0	5,139	4,624	311	-18%	-68%
Minnesota	131	8	11,553	10,319	311	-6%	34%

27 - 51

	Today		Total Since 22 Jan			Change from 14d Ago [*] in 14 day avg of daily new	
	New Confirmed	New Deaths	Total Confirmed	Total Recovered	Total Deaths	Confirmed	Deaths
Minnesota	131	8	11,553	10,319	311	-6%	34%
Iowa	121	0	16,623	12,844	309	-3%	14%
California	149	1	15,789	N/A	285	-11%	10%
Virginia	110	0	12,499	1,615	279	4%	-15%
Washington	76	2	8,859	N/A	234	-17%	24%
Missouri	194	1	11,111	N/A	225	-14%	-24%
N. Carolina	119	0	13,821	11,153	224	-23%	10%
Tennessee	287	3	19,579	13,568	200	-24%	27%
Arkansas	223	0	17,451	15,101	198	-16%	26%
Nebraska	68	0	15,701	11,503	187	-11%	-6%
Kentucky	0	0	8,714	2,035	181	-3%	-6%
Wisconsin	118	0	11,291	9,615	178	-14%	-13%
South Dakota	176	1	11,614	10,104	173	26%	6%
Oklahoma	137	1	12,217	10,165	167	-22%	12%
North Dakota	188	5	11,268	9,512	164	17%	54%
Idaho	101	0	15,476	5,940	151	5%	-8%
Kansas	0	0	11,631	480	139	2%	-13%
Utah	103	0	14,552	11,760	113	-22%	-24%
Maine	18	0	3,101	2,696	94	-23%	-33%
Vermont	10	0	2,428	2,143	93	17%	0%
Oregon	58	0	5,515	1,033	92	-8%	-6%
West Virginia	59	0	4,780	3,587	89	-9%	153%
Montana	85	0	5,380	3,878	77	-6%	-13%
Wyoming	102	0	5,678	4,610	52	-30%	300%
Alaska	141	0	5,822	1,938	38	-30%	-33%
Hawaii	153	0	3,561	1,277	28	225%	600%

^{*}Change from 14d ago:
Compares 14d-avgs. of Daily New Cases/Deaths
today with 14d-avgs. from 14d ago

Avg. new confirmed cases in **Texas** decreased 5% in the last 14 days

Sorted by Total Deaths / 1M
N/As and negative deaths are due to states
revising and updating case counts



United States: Raw Volume



1 - 26

	Today		Total Since 22 Jan			Change from 14d Ago [*] in 14 day avg of daily new	
	New Confirmed	New Deaths	Total Confirmed	Total Recovered	Total Deaths	Confirmed	Deaths
New York	607	7	425,508	74,154	32,840	-3%	-40%
New Jersey	13	2	187,455	33,320	15,912	-8%	-42%
California	5,879	25	623,873	N/A	11,243	-11%	10%
Texas	8,842	128	555,394	399,572	10,396	-5%	23%
Florida	3,779	107	573,416	N/A	9,452	-37%	13%
Massachusetts	394	12	123,593	100,486	8,838	4%	-3%
Illinois	1,561	18	207,412	N/A	7,955	18%	7%
Pennsylvania	539	2	129,070	98,323	7,453	-13%	14%
Michigan	477	6	102,259	67,778	6,592	6%	48%
Georgia	1,862	33	237,030	N/A	4,702	-12%	29%
Louisiana	1,181	77	137,918	103,512	4,507	-35%	8%
Arizona	883	14	193,537	27,582	4,506	-57%	-26%
Connecticut	0	0	50,897	8,809	4,453	-43%	-42%
Ohio	613	2	108,287	86,926	3,826	-16%	-16%
Maryland	519	3	100,212	6,004	3,639	-18%	-10%
Indiana	739	5	80,415	59,801	3,133	11%	3%
Virginia	937	0	106,687	13,783	2,381	4%	-15%
N. Carolina	1,248	4	144,952	116,969	2,347	-23%	10%
S. Carolina	615	9	106,497	42,730	2,269	-33%	-21%
Mississippi	381	4	72,136	49,836	2,084	-35%	9%
Alabama	853	2	108,433	41,523	1,898	-30%	-20%
Colorado	338	0	53,157	5,660	1,896	-28%	-43%
Washington	576	15	67,461	N/A	1,781	-17%	24%
Minnesota	739	47	65,152	58,196	1,752	-6%	34%
Missouri	1,192	5	68,196	N/A	1,383	-14%	-24%

27 - 51

	Today		Total Since 22 Jan			Change from 14d Ago [*] in 14 day avg of daily new	
	New Confirmed	New Deaths	Total Confirmed	Total Recovered	Total Deaths	Confirmed	Deaths
Tennessee	1,961	21	133,708	92,655	1,366	-24%	27%
Nevada	697	3	61,305	1,423	1,072	-23%	30%
Wisconsin	685	1	65,741	55,982	1,039	-14%	-13%
Rhode Island	0	0	20,335	1,953	1,021	7%	-18%
Iowa	382	0	52,447	40,525	975	-3%	14%
Kentucky	0	0	38,930	9,091	810	-3%	-6%
New Mexico	106	3	23,408	10,391	714	-41%	-28%
Oklahoma	544	4	48,342	40,224	661	-22%	12%
Arkansas	673	-1	52,665	45,572	599	-16%	26%
DC	61	0	13,220	10,493	597	46%	117%
Delaware	55	0	16,451	8,671	593	5%	-87%
New Hampshire	8	0	6,988	6,287	423	-18%	-68%
Kansas	0	0	33,885	1,399	406	2%	-13%
Oregon	244	2	23,262	4,355	388	-8%	-6%
Utah	331	0	46,652	37,701	363	-22%	-24%
Nebraska	131	0	30,372	22,251	361	-11%	-6%
Idaho	181	0	27,656	10,616	269	5%	-8%
West Virginia	105	0	8,567	6,429	160	-9%	153%
South Dakota	156	1	10,274	8,939	153	26%	6%
Maine	24	0	4,168	3,624	127	-23%	-33%
North Dakota	143	4	8,587	7,249	125	17%	54%
Montana	91	0	5,750	4,145	82	-6%	-13%
Vermont	6	0	1,515	1,337	58	17%	0%
Hawaii	217	0	5,042	1,808	40	225%	600%
Wyoming	59	0	3,286	2,668	30	-30%	300%
Alaska	103	0	4,259	1,418	28	-30%	-33%

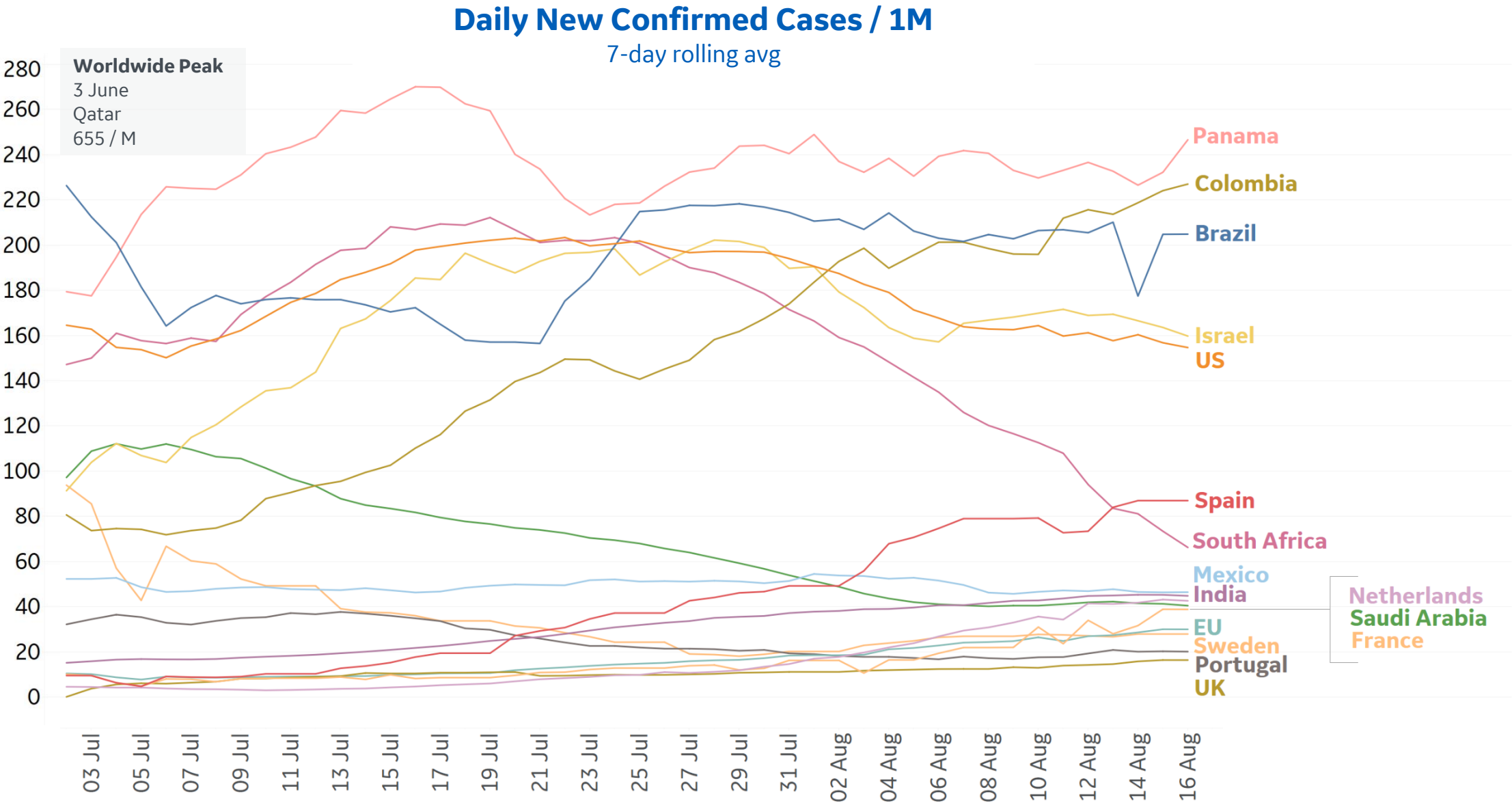
^{*}Change from 14d ago:
Compares 14d-avgs. of Daily New Cases/Deaths
today with 14d-avgs. from 14d ago

The **US** death toll has surpassed 170k

Sorted by Raw Total Deaths
N/As and negative deaths are due to states
revising and updating case counts

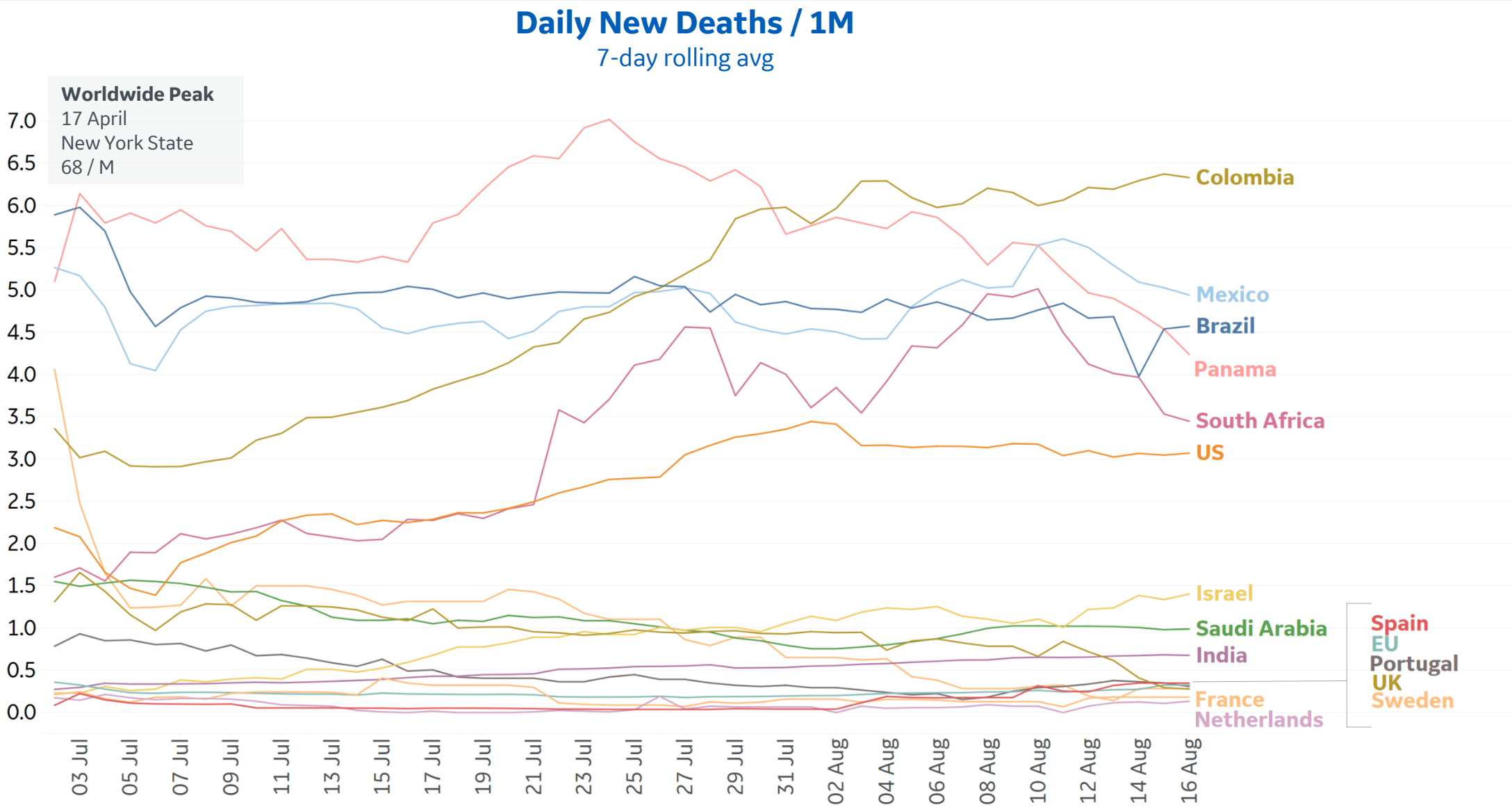


New Confirmed Cases in Select Countries



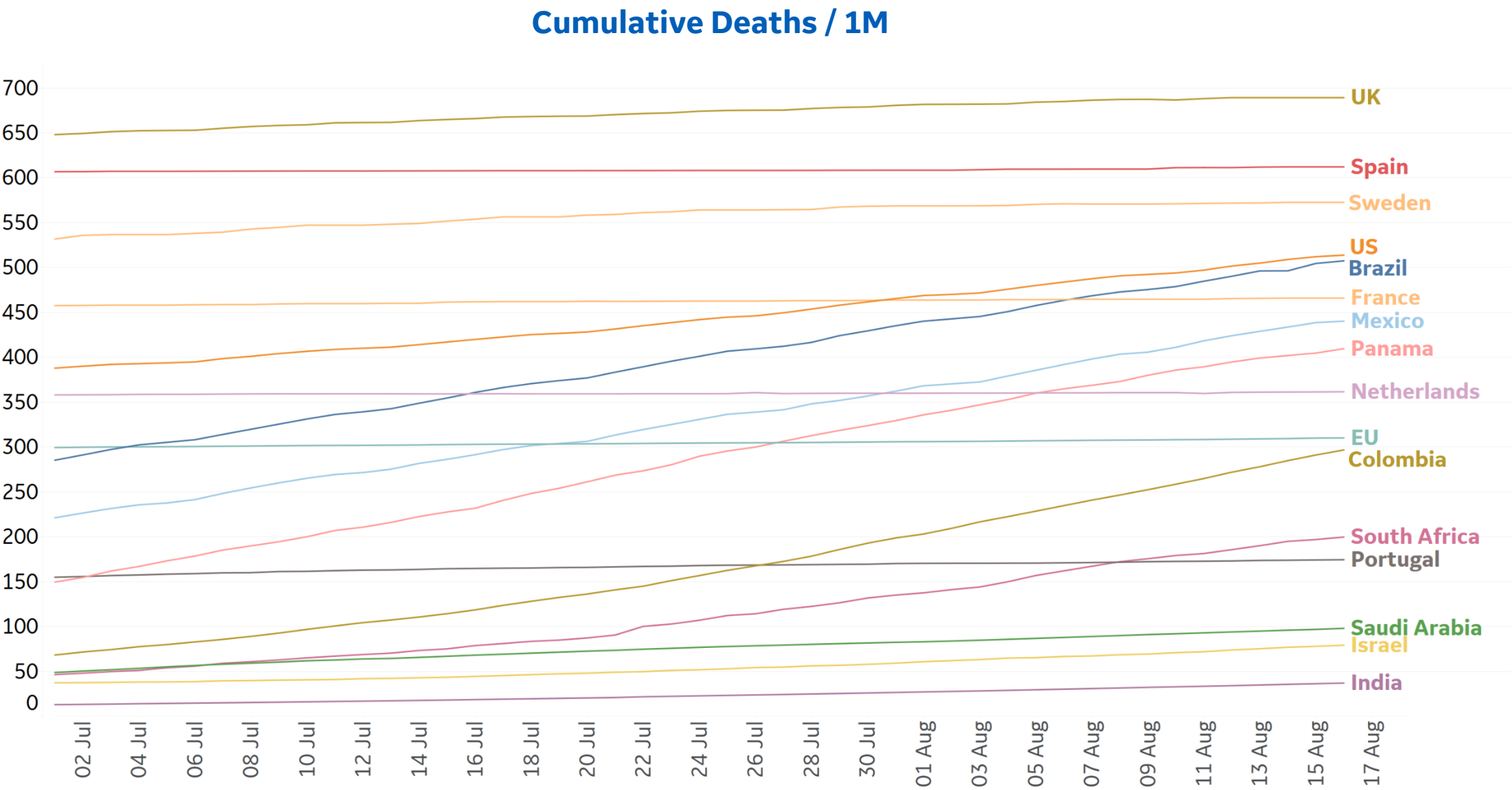


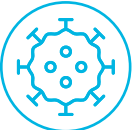
New Deaths in Select Countries



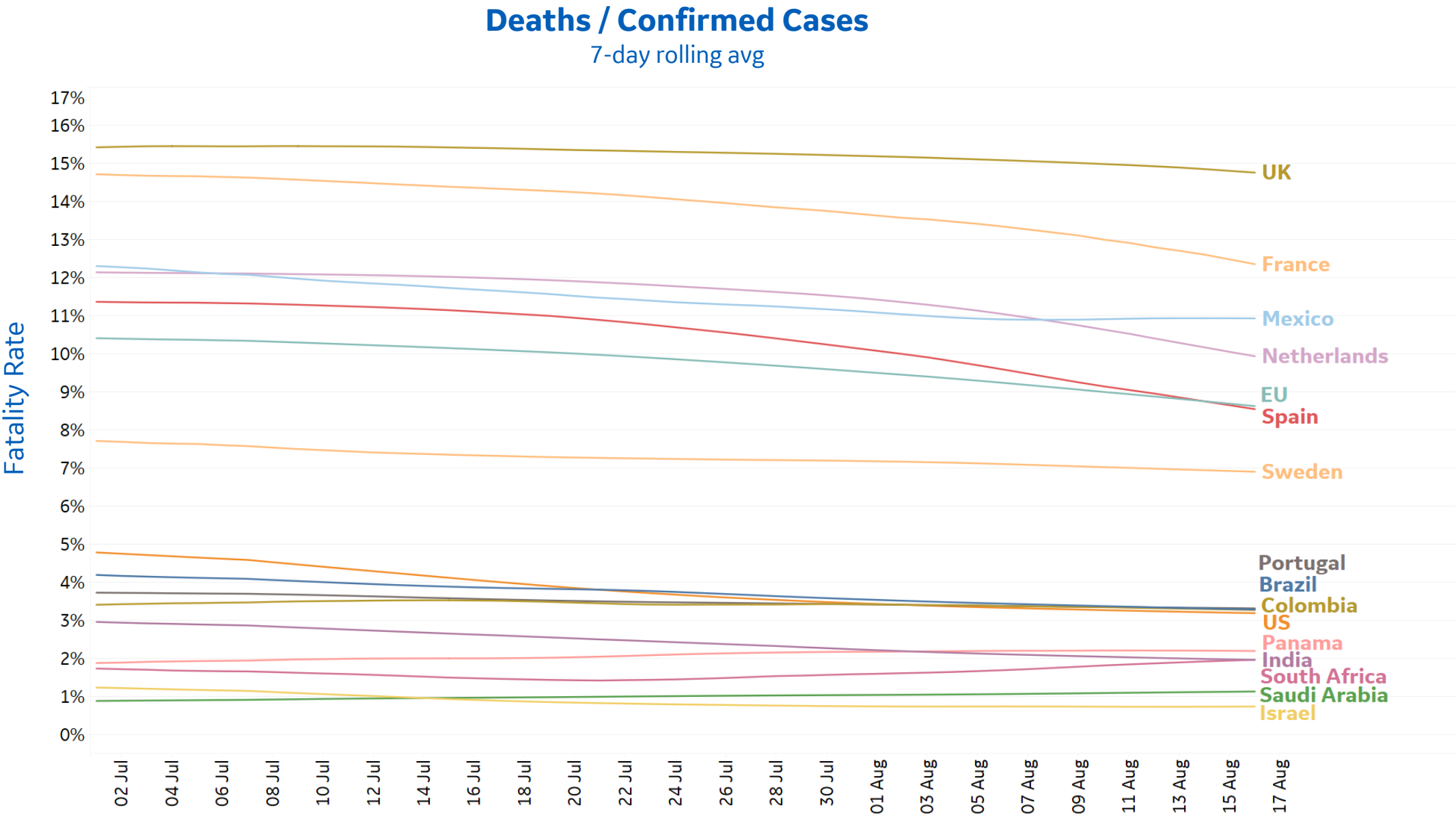


Cumulative Deaths in Select Countries





Fatality Rate in Select Countries

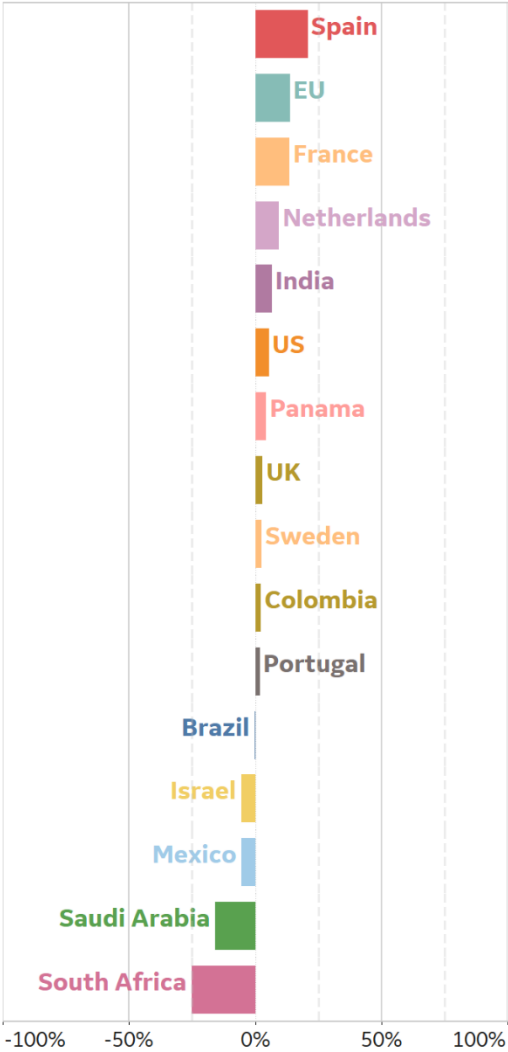




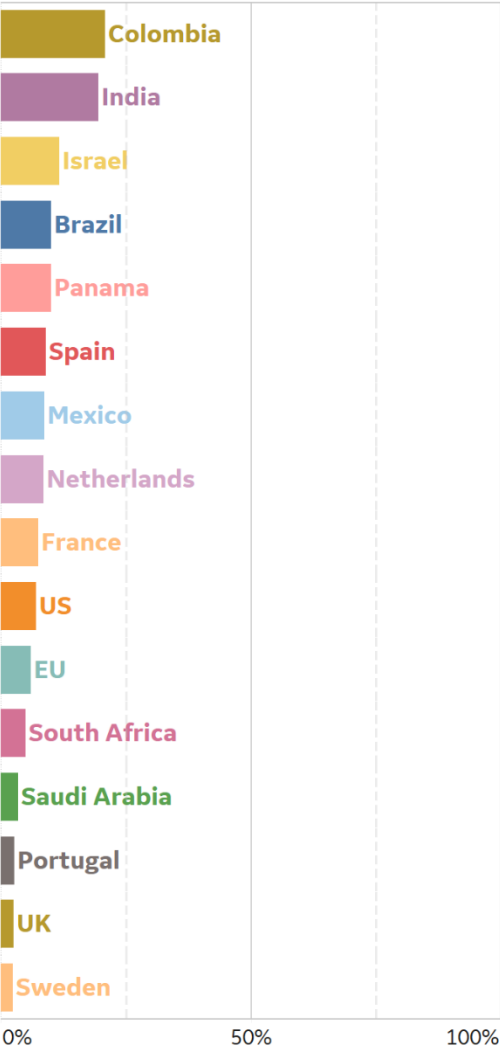
% Change in Case Volume in Select Countries

Over Previous 7 days

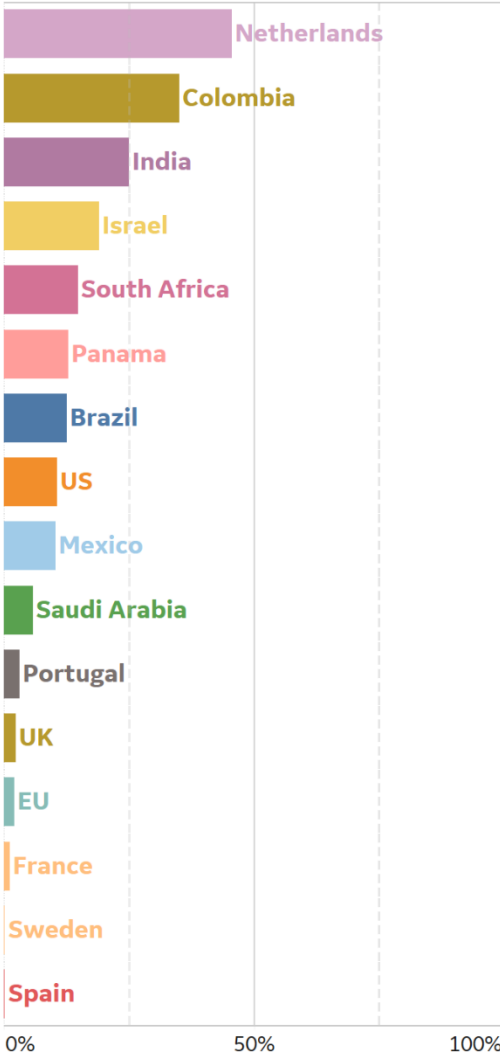
Active Cases



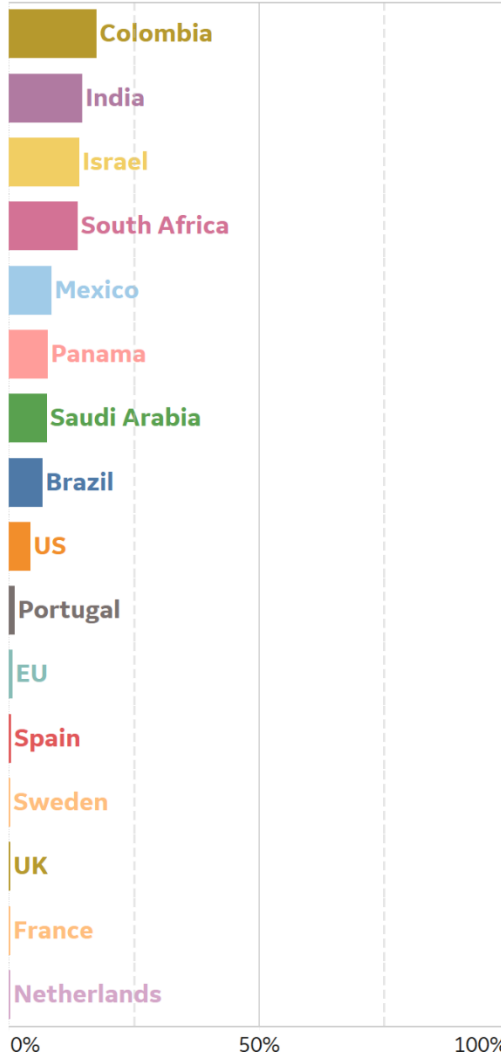
Confirmed Cases



Reported Recoveries

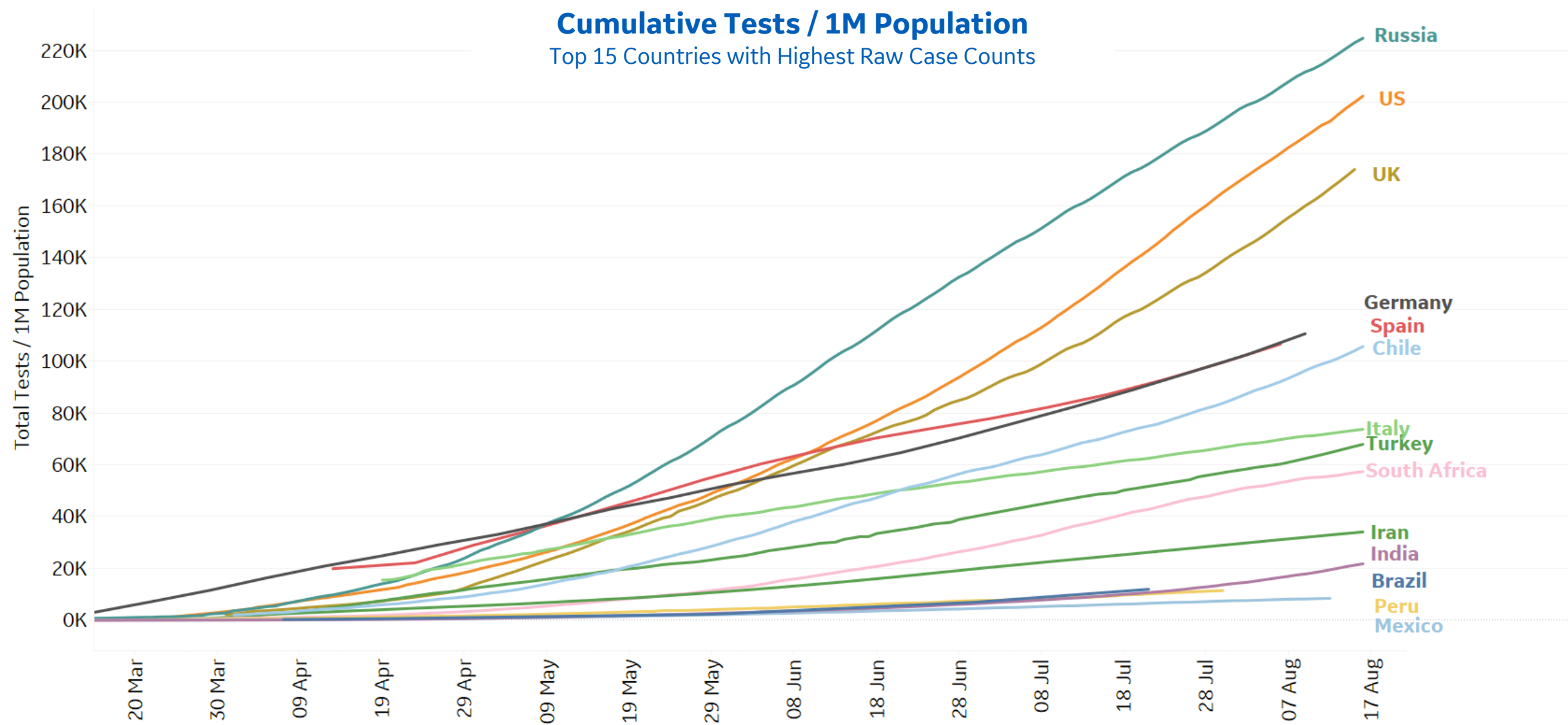


Reported Deaths



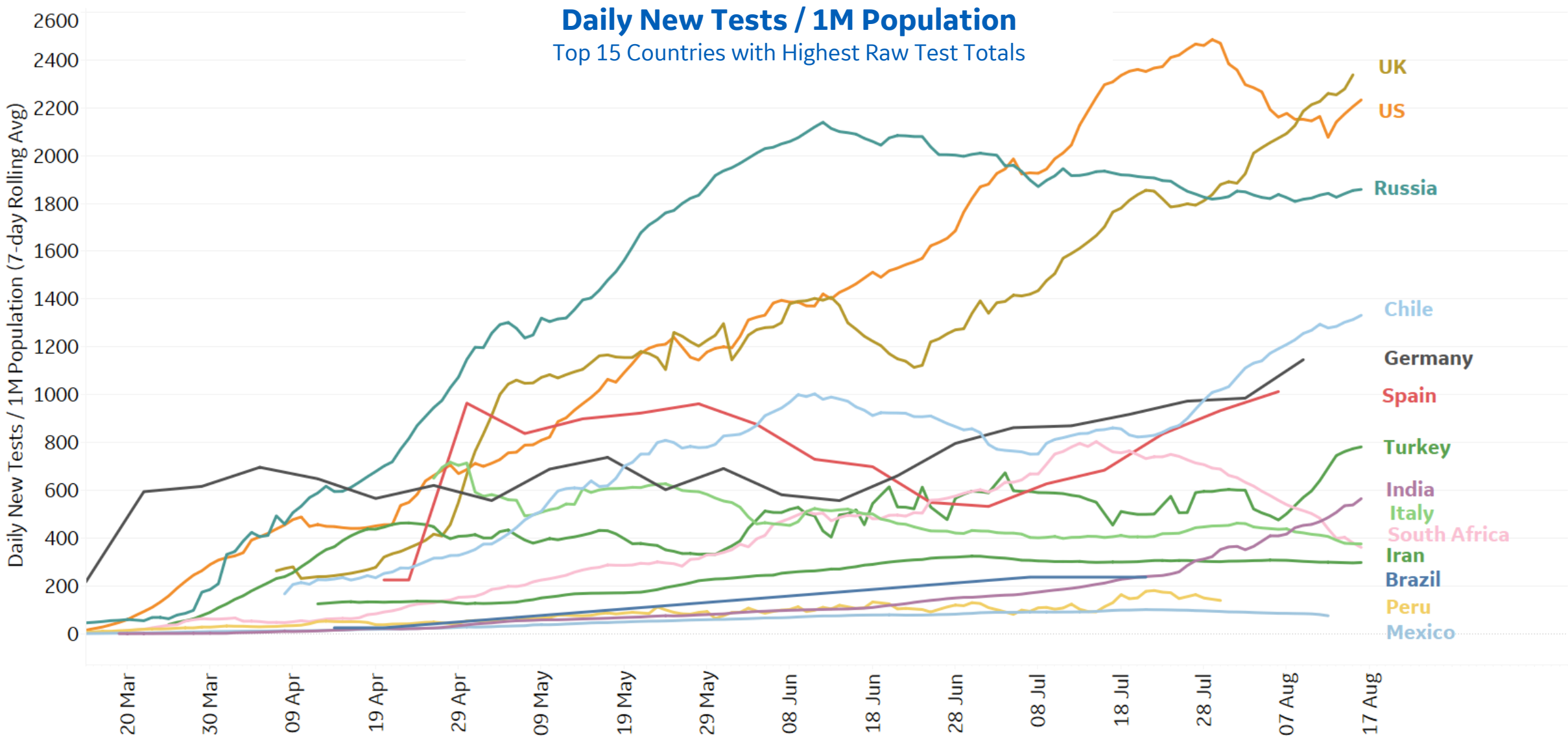


Feature: Testing in Select Countries





Feature: Testing in Select Countries





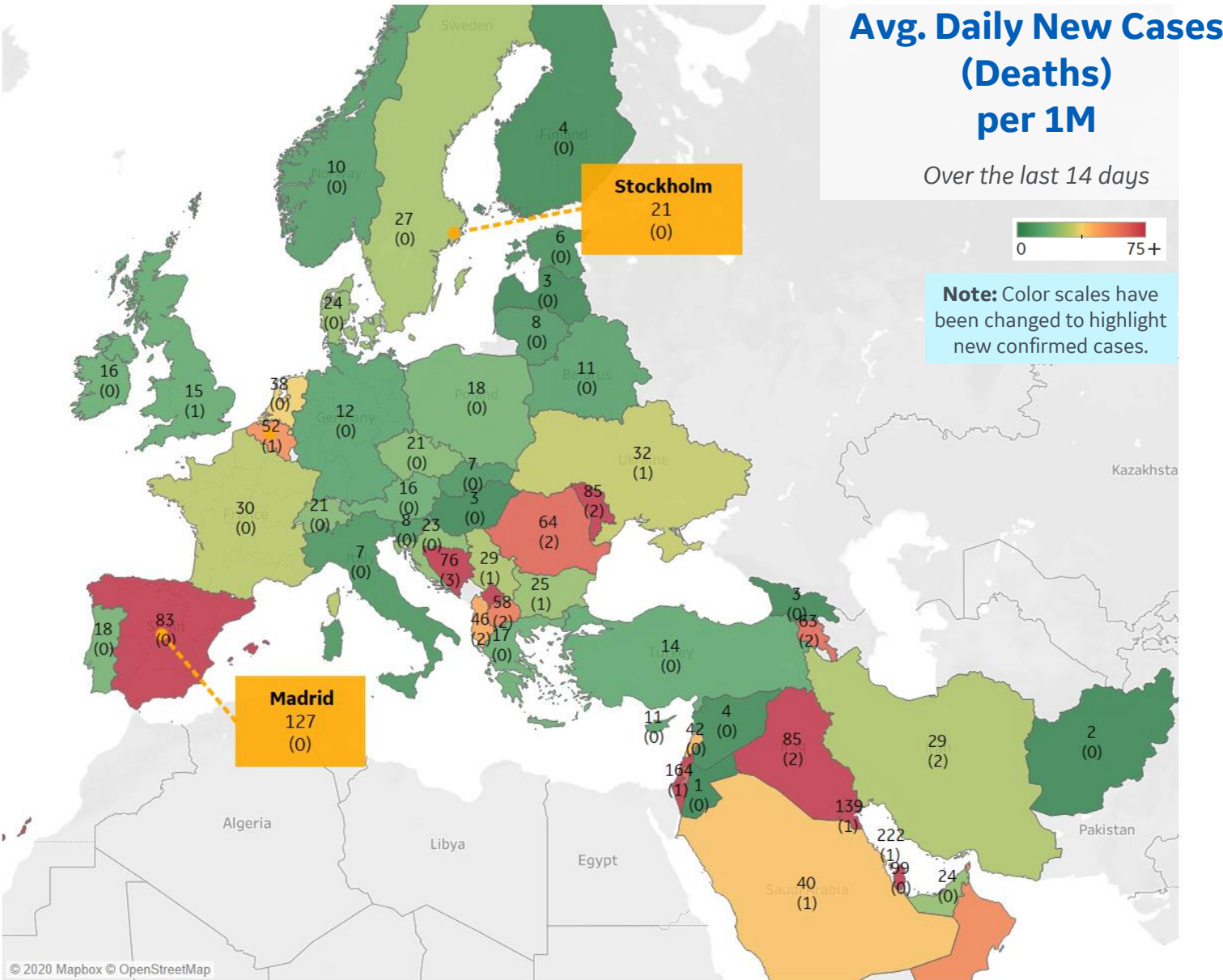
Per 1M in Region

	Today	Change
Active Cases	1,217	+1%
Confirmed	22 new	+1%
Deaths	0.5 new	+0.2%
Recovered	14 new	+1%

Most Daily New Cases / 1M

Bahrain	222
Israel	164
Kuwait	139
Qatar	99
Kosovo	96
Moldova	85
Iraq	85
Spain	83
Bos. and Herz.	76
Romania	64

* Excludes regions with population < 1M





Per 1M in Region

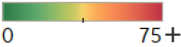
	Today	Change
Active Cases	3,765	+0.43%
Confirmed	16 new	+0.34%
Deaths	0 new	+0%
Recovered	0 new	+0%

Most Daily New Cases / 1M

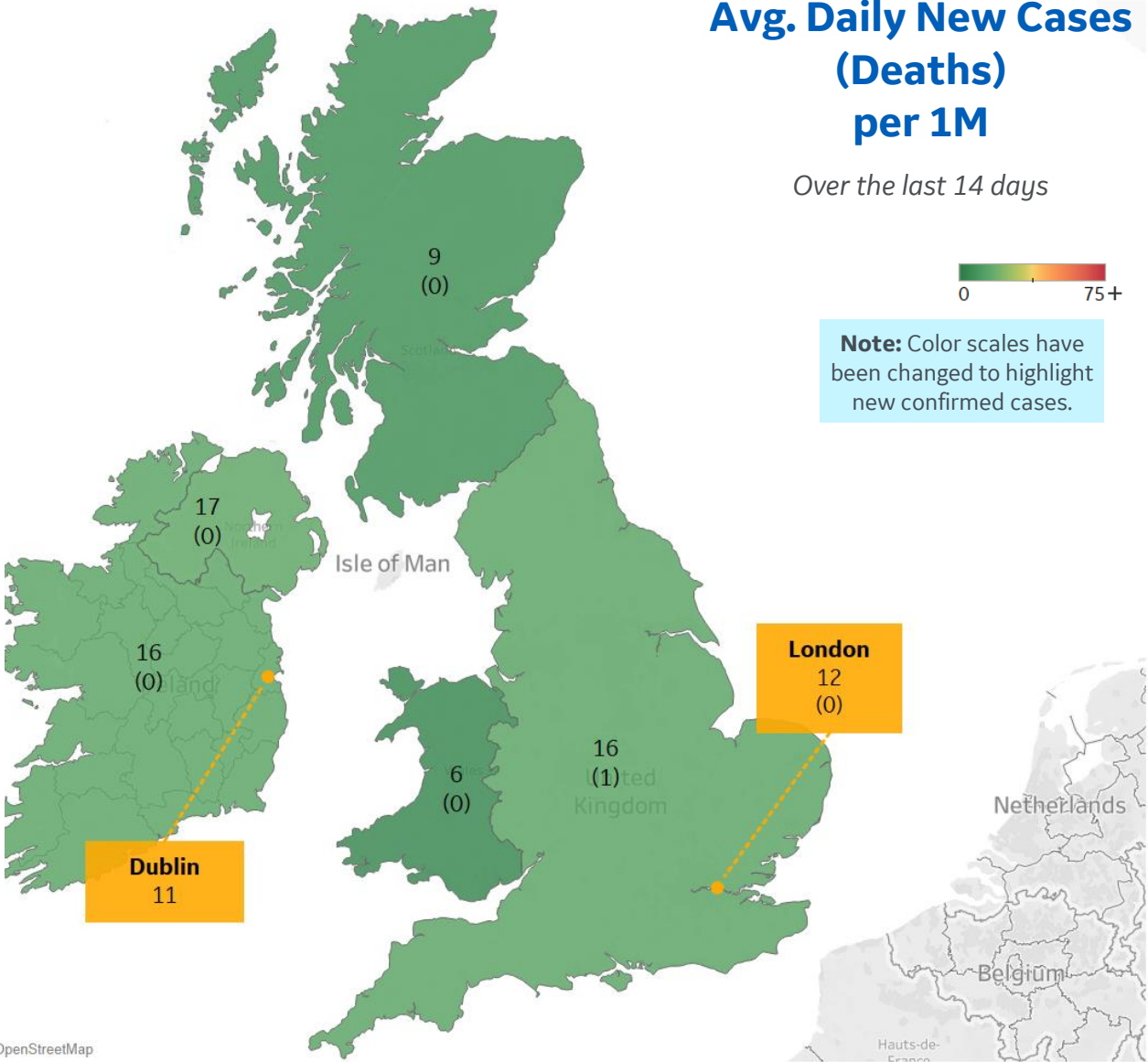
Northern Ireland	17
England	16
Ireland	16
Scotland	9
Wales	6

Avg. Daily New Cases (Deaths) per 1M

Over the last 14 days



Note: Color scales have been changed to highlight new confirmed cases.



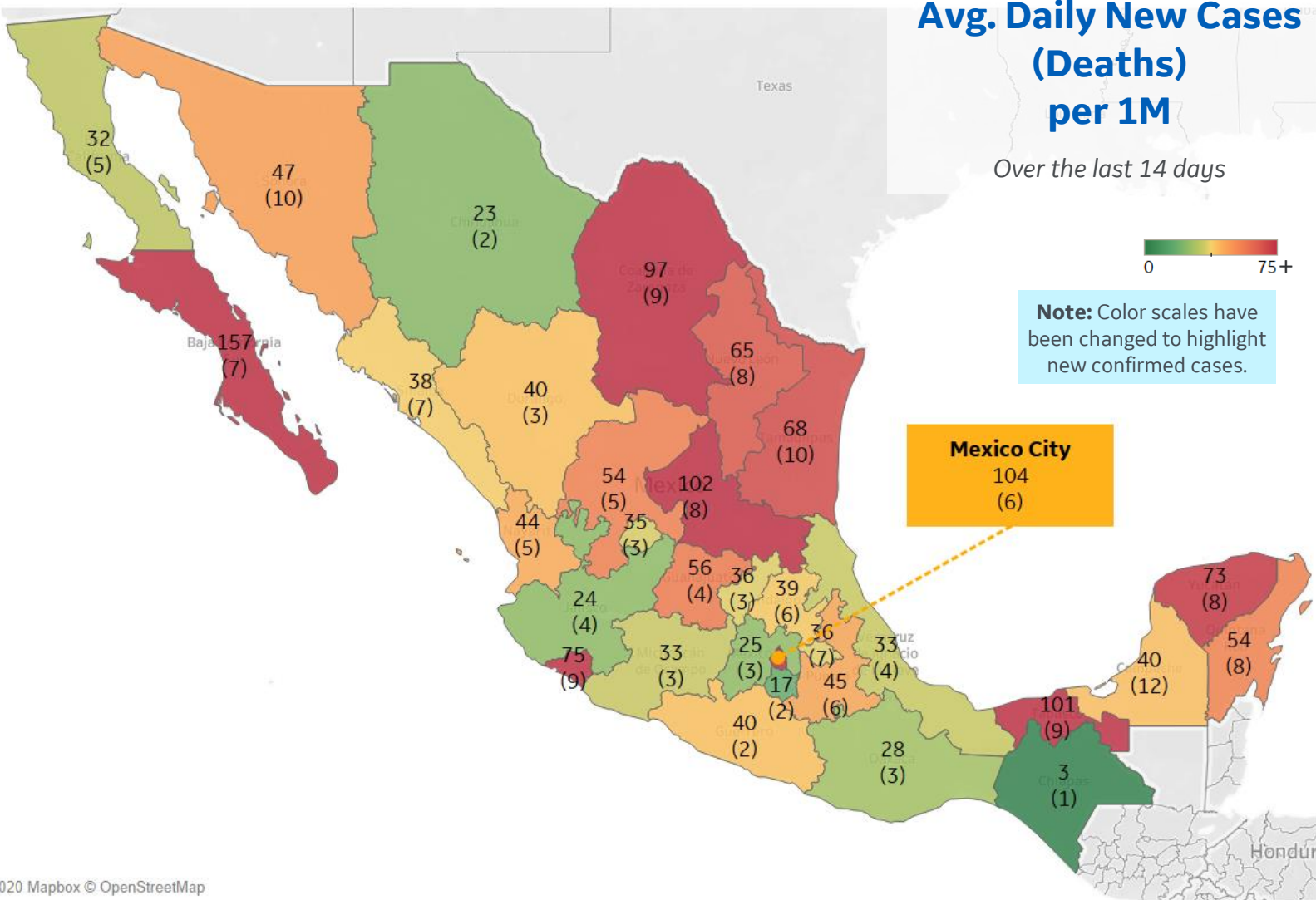


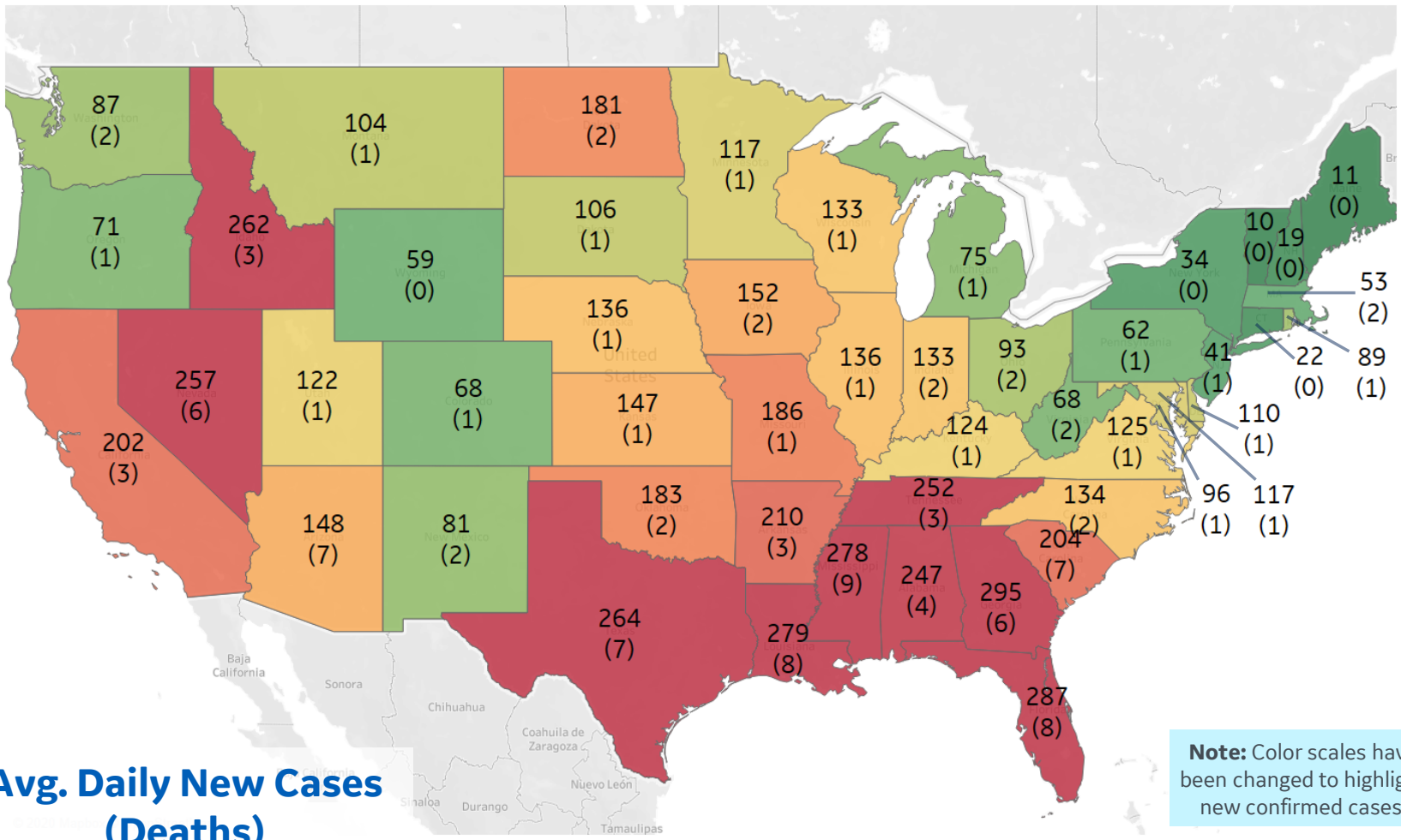
Per 1M in Region

	Today	Change
Active Cases	319	-4%
Confirmed	34 new	+1%
Deaths	2 new	+0.4%
Recovered	48 new	+1%

Most Daily New Cases / 1M

Baja California Sur	157
Distrito Federal	104
San Luis Potosí	102
Tabasco	101
Coahuila	97
Colima	75
Yucatán	73
Tamaulipas	68
Nuevo León	65
Guanajuato	56





Top 10 by New Confirmed

Avg New Confirmed Cases / 1M

Georgia	295
Florida	287
Louisiana	279
Mississippi	278
Texas	264
Idaho	262
Nevada	257
Tennessee	252
Alabama	247
Arkansas	210

Top 10 by New Deaths

Avg New Deaths / 1M

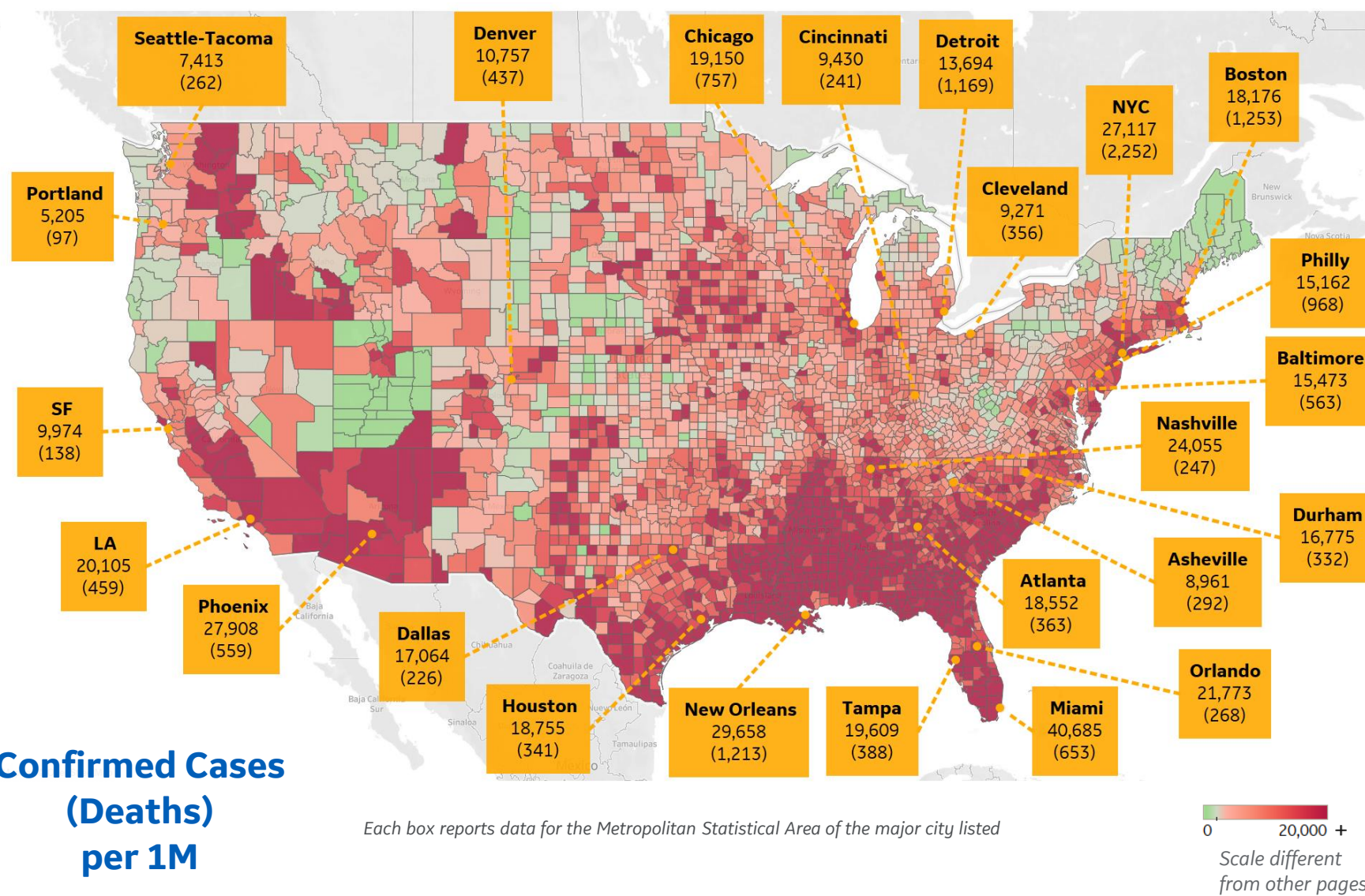
Mississippi	9
Florida	8
Louisiana	8
Arizona	7
Texas	7
South Carolina	7
Georgia	6
Nevada	6
Alabama	4
California	3



US by County & Metro, Total to Date

Updated 17 August 2020, 3:30 GMT

18



Top 10 Northeast Counties

Total Confirmed Cases / 1M

Rockland County, NY	42,994
Westchester County, NY	37,677
Passaic County, NJ	35,769
Nassau County, NY	32,374
Union County, NJ	30,321
Suffolk County, NY	29,906
Hudson County, NJ	29,584
Orange County, NY	29,236
New York City*	27,615
Suffolk County, MA	27,387

Top 10 Other US Counties

Total Confirmed Cases / 1M

Miami-Dade County, FL	53,482
Nueces County, TX	47,045
Yakima County, WA	42,352
Cameron County, TX	42,102
Jefferson Parish, LA	36,507
Webb County, TX	34,527
Broward County, FL	34,027
Escambia County, FL	32,248
Davidson County, TN	31,540
Charleston County, SC	31,305

Note: Includes counties ≥ 250K population

* New York City counties aggregated into one reporting area



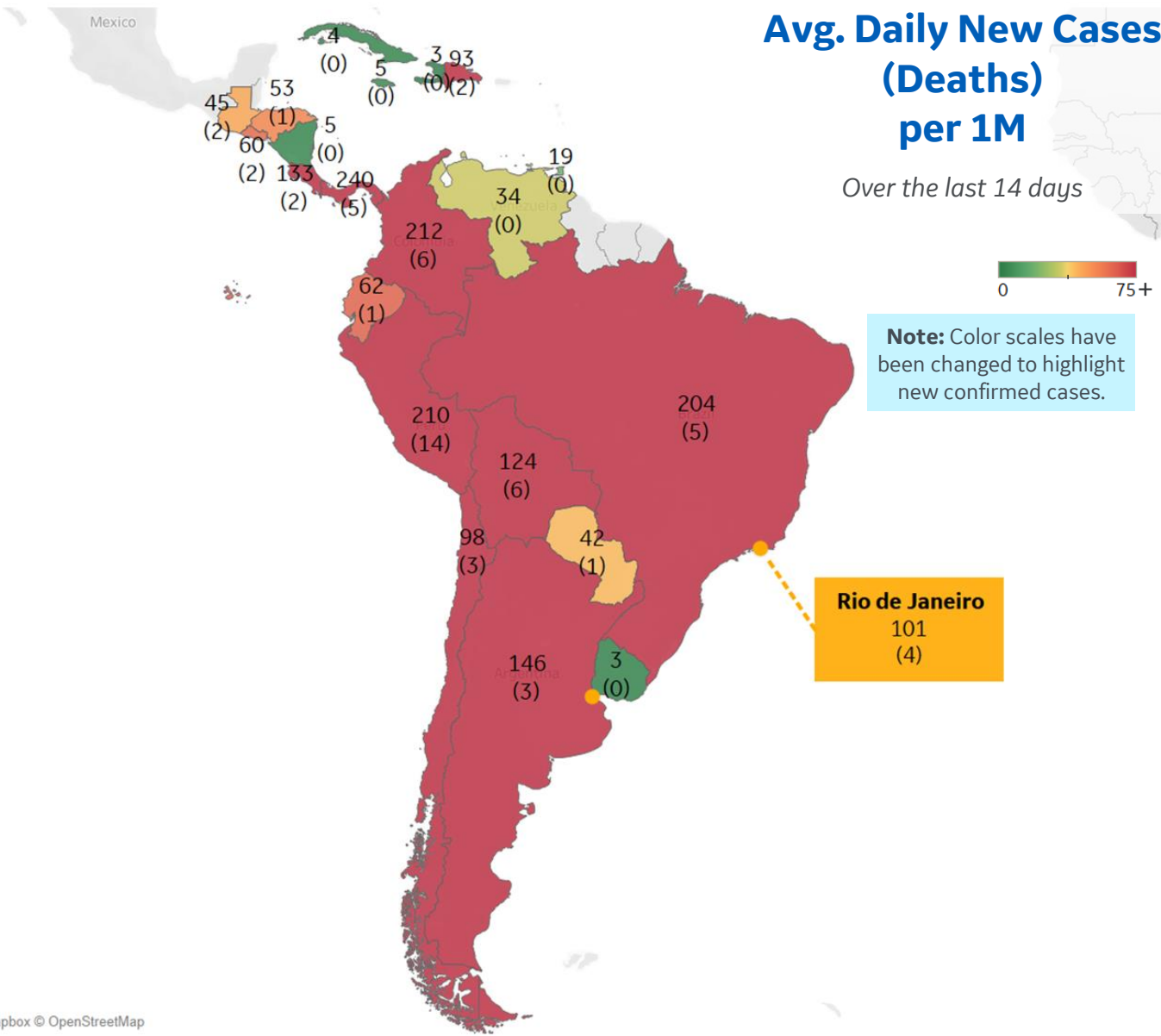
Per 1M in Region

	Today	Change
Active Cases	2,307	-1%
Confirmed	114 new	+1%
Deaths	3 new	+1%
Recovered	138 new	+2%

Most Daily New Cases / 1M

Panama	240
Colombia	212
Peru	210
Brazil	204
Argentina	146
Costa Rica	133
Bolivia	124
Chile	98
Dom. Rep.	93
Ecuador	62

* Excludes regions with population < 1M





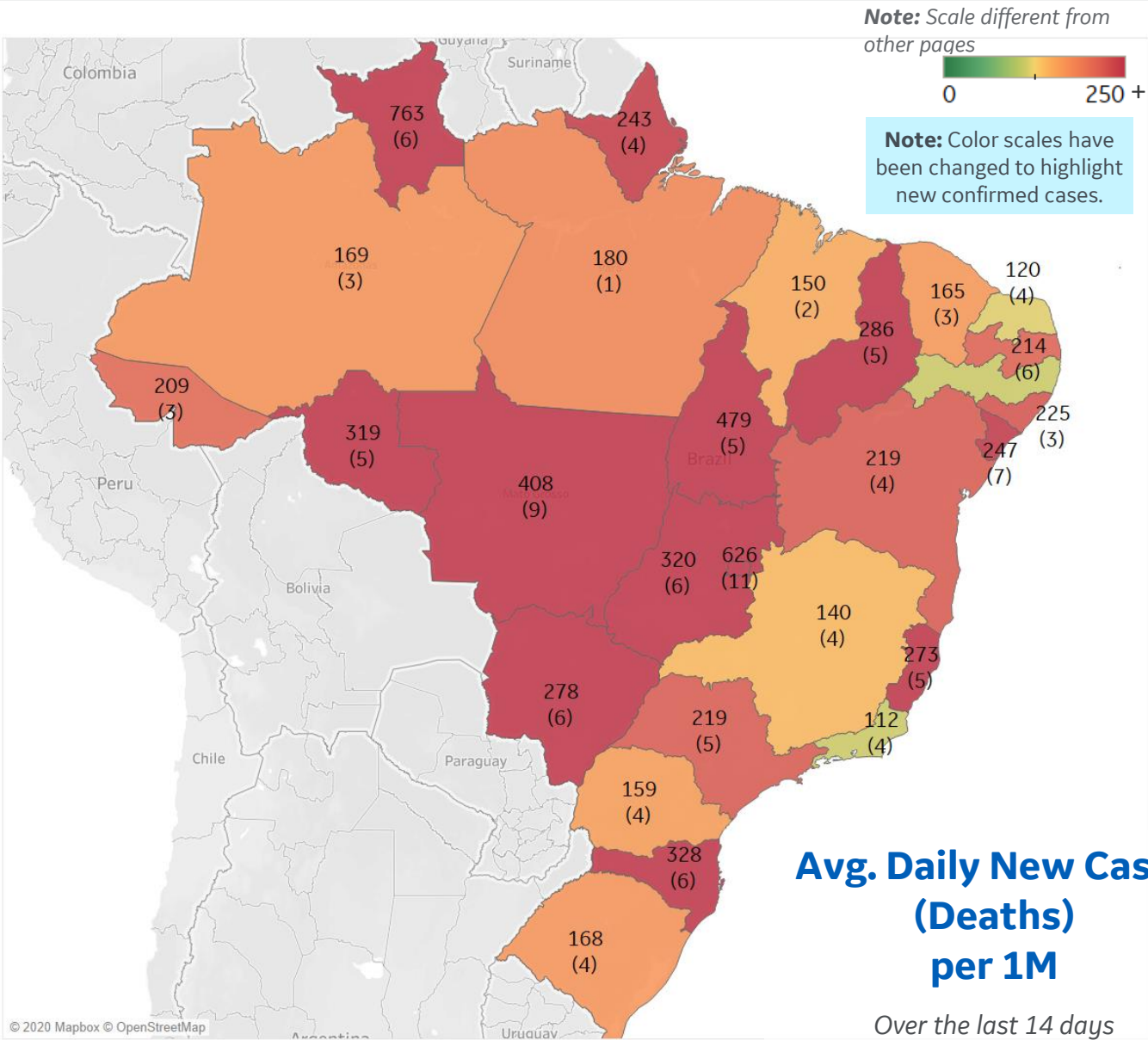
Per 1M in Region

	Today	Change
Active Cases	2,716	-2%
Confirmed	109 new	+1%
Deaths	3 new	+1%
Recovered	151 new	+1%

Most Daily New Cases / 1M

Distrito Federal	626
Tocantins	479
MatoGrosso	408
Santa Catarina	328
Goiás	320
Rondônia	319
Piauí	286
MatoGrosso d..	278
Espírito Santo	273
Sergipe	247

* Excludes regions with population < 1M





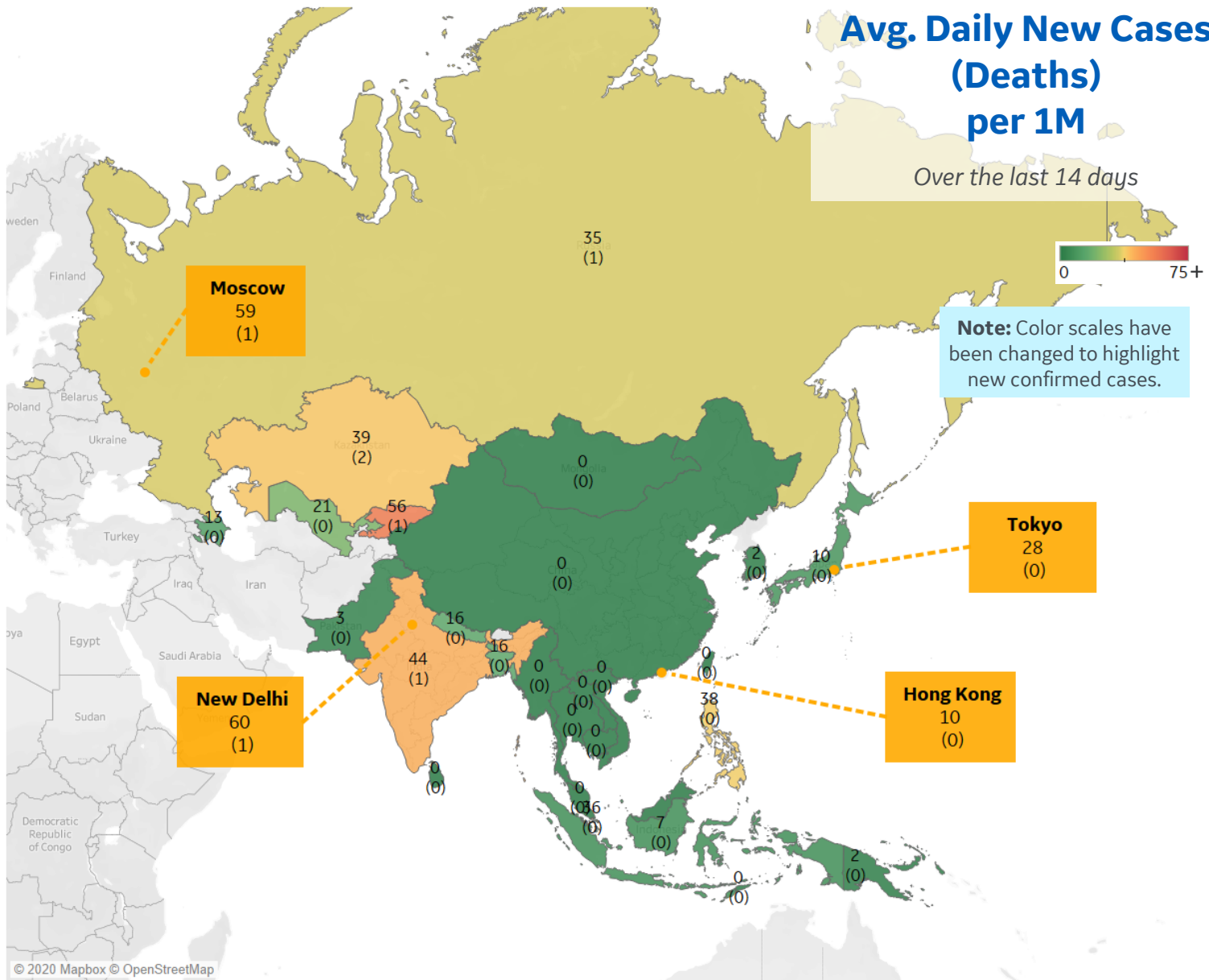
Per 1M in Region

	Today	Change
Active Cases	259	-3%
Confirmed	17 new	+2%
Deaths	0.3 new	+1%
Recovered	26 new	+3%

Most Daily New Cases / 1M

Kyrgyzstan	56
India	44
Kazakhstan	39
Philippines	38
Singapore	36
Russia	35
Uzbekistan	21
Bangladesh	16
Nepal	16
Azerbaijan	13

* Excludes regions with population < 1M





Per 1M in Region

	Today	Change
Active Cases	293	-2%
Confirmed	9 new	+1%
Deaths	1 new	+6%
Recovered	15 new	+3%

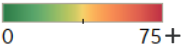
Most Daily New Cases / 1M

Australia	15
New Zealand	1

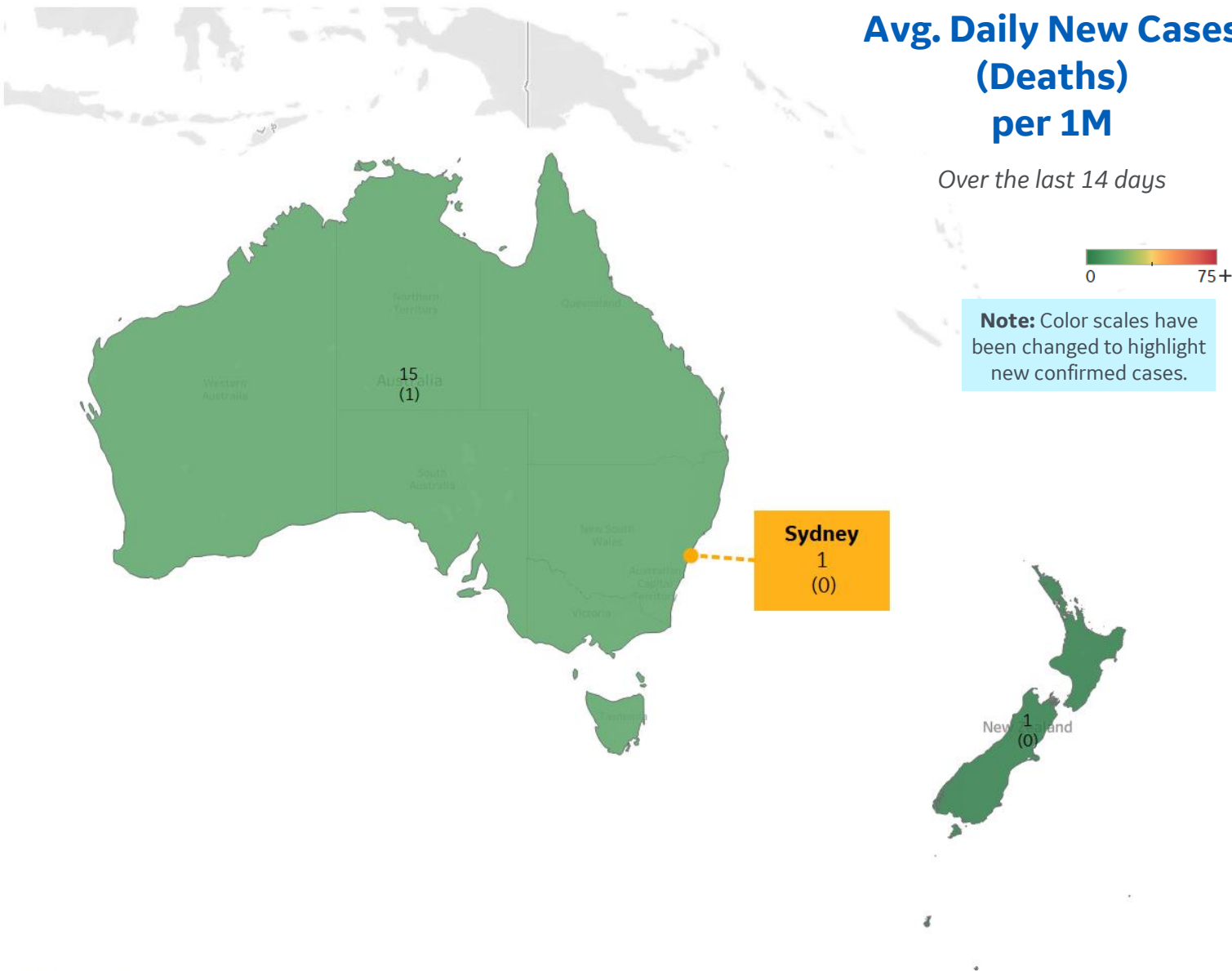
* Excludes regions with population < 1M

Avg. Daily New Cases
(Deaths)
per 1M

Over the last 14 days



Note: Color scales have been changed to highlight new confirmed cases.





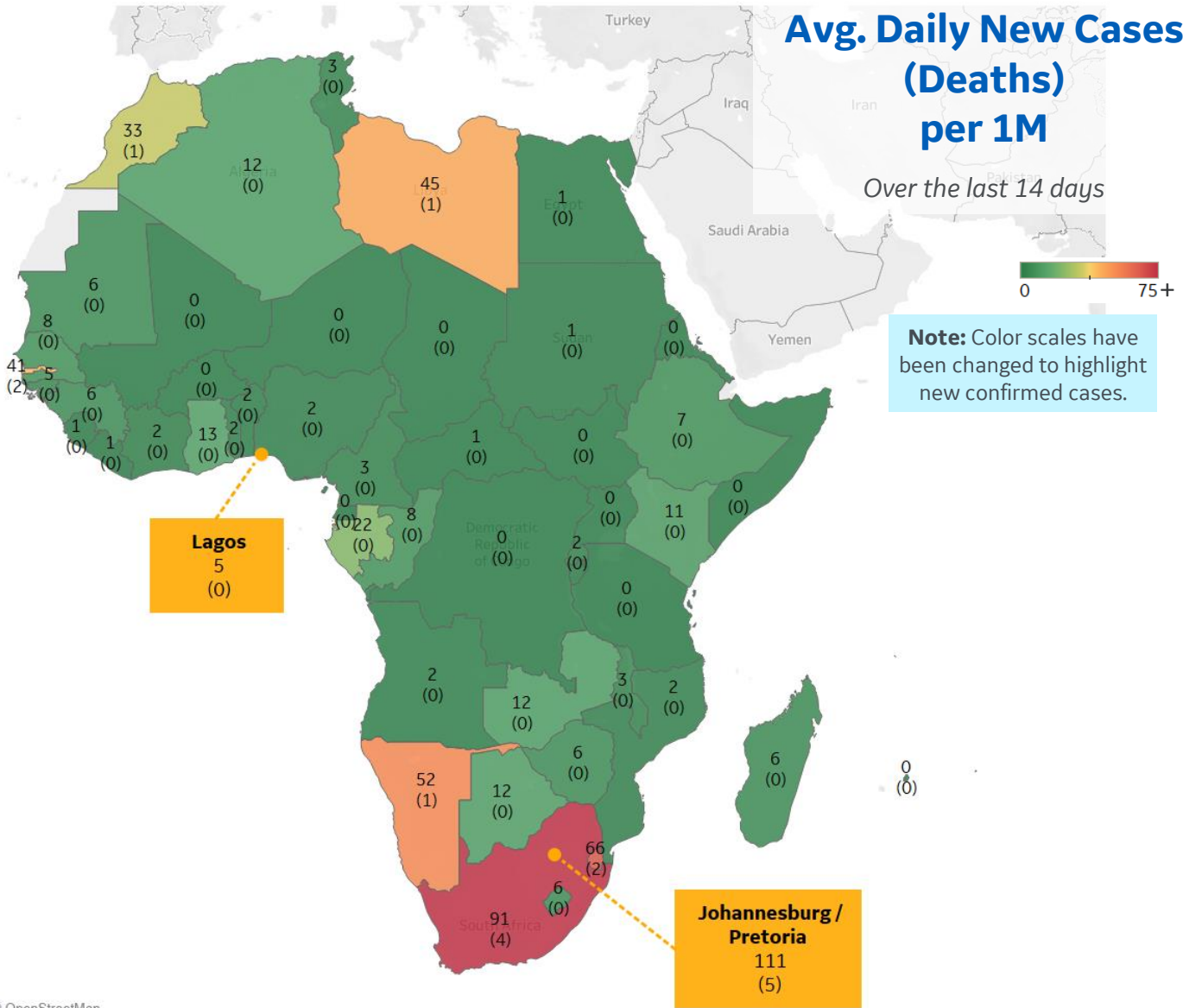
Per 1M in Region

	Today	Change
Active Cases	193	-0.3%
Confirmed	7 new	+1%
Deaths	0.2 new	+1%
Recovered	8 new	+1%

Most Daily New Cases / 1M

South Africa	91
Eswatini	66
Namibia	52
Libya	45
Gambia	41
Morocco	33
Gabon	22
Ghana	13
Botswana	12
Zambia	12

* Excludes regions with population < 1M





Sources



*** Per 1M = Per 1 Million Population unless otherwise noted*

Johns Hopkins Coronavirus Resource Center:

<https://coronavirus.jhu.edu/map.html>

Worldometer Coronavirus Reporting:

<https://www.worldometers.info/coronavirus/>

Public Health England:

<https://www.gov.uk/government/publications/covid-19-track-coronavirus-cases>

US Department of Homeland Security, Homeland Infrastructure Foundation-Level Data:

<https://hifld-geoplatform.opendata.arcgis.com/datasets/hospitals>

City of New York, NYC Health:

<https://www1.nyc.gov/site/doh/covid/covid-19-data.page>

Chicago Coronavirus Latest Data:

<https://www.chicago.gov/city/en/sites/covid-19/home/latest-data.html>

National Health Commission of the PRC:

<http://www.nhc.gov.cn/xcs/yqtb/202003/bf66696029ba420098164607240074f8.shtml>

Korean Centers for Disease Control and Prevention:

http://www.cdc.go.kr/cdc_eng/

CDC, Severe Outcomes Among Patients with Coronavirus Disease 2019 (COVID-19):

<https://www.cdc.gov/mmwr/volumes/69/wr/mm6912e2.htm>

Italian Department of Civil Protection, COVID Monitoring:

<http://opendatadpc.maps.arcgis.com/apps/opsdashboard/index.html#/b0c68bce2cce478eaac82fe38d4138b1>

The COVID Tracking Project:

<https://covidtracking.com/data/>

UK Office for National Statistics

<https://www.ons.gov.uk/peoplepopulationandcommunity/birthsdeathsandmarriages/deaths/bulletins/deathsregisteredweeklyinenglandandwalesprovisional/weekending24april2020>

WHO Europe, Surveillance Report:

<http://www.euro.who.int/en/health-topics/health-emergencies/coronavirus-covid-19/weekly-surveillance-report>

WHO Europe, Principles for Transition:

<http://www.euro.who.int/en/media-centre/sections/statements/2020/statement-transition-to-a-new-normal-during-the-covid-19-pandemic-must-be-guided-by-public-health-principles>

COVID-19 Information for Switzerland:

<https://www.corona-data.ch/>

Italian Ministry of Health:

<http://www.salute.gov.it/portale/nuovocoronavirus/dettaglioContenutiNuovoCoronavirus.jsp?lingua=italiano&id=5351&area=nuovoCoronavirus&menu=vuoto>

New South Wales Government:

<https://www.health.nsw.gov.au/Infectious/diseases/Pages/covid-19-latest.aspx>

Provincial Health Services Authority of Canada. BC Center for Disease Control:

<http://www.bccdc.ca/about/news-stories/stories/2020/information-on-novel-coronavirus>

Coronavirus Cases in Japan by Prefecture, Nippon Communications Foundation:

<https://www.nippon.com/en/japan-data/h00657/coronavirus-cases-in-japan-by-prefecture.html>

Secretary of Health, Mexico:

<https://www.gob.mx/salud/en>

OECD Economic Outlooks, Statistics:

https://www.oecd-ilibrary.org/economics/data/oecd-economic-outlook-statistics-and-projections_eo-data-en

Public Health Authority of Sweden:

<https://www.folkhalsomyndigheten.se/smittskydd-beredskap/utbrott/aktuella-utbrott/covid-19/bekraftade-fall-i-sverige>

National Public Health Agency of France:

<https://www.santepubliquefrance.fr/regions/ile-de-france/documents/bulletin-regional/2020/covid-19-point-epidemiologique-en-ile-de-france-du-23-avril-2020>

Florida Department of Health, COVID-19 Response:

<https://floridahealthcovid19.gov>

CDC:

<https://www.cdc.gov/covid-data-tracker/index.html#demographics>

CDC Provisional COVID19 Deaths Counts

<https://data.cdc.gov/NCHS/Provisional-COVID-19-Death-Counts-by-Sex-Age-and-S/9bhg-hcku>

Johns Hopkins Coronavirus Resource Center:

<https://coronavirus.jhu.edu/map.html>

CIA World Factbook:

<https://www.cia.gov/library/publications/resources/the-world-factbook/>