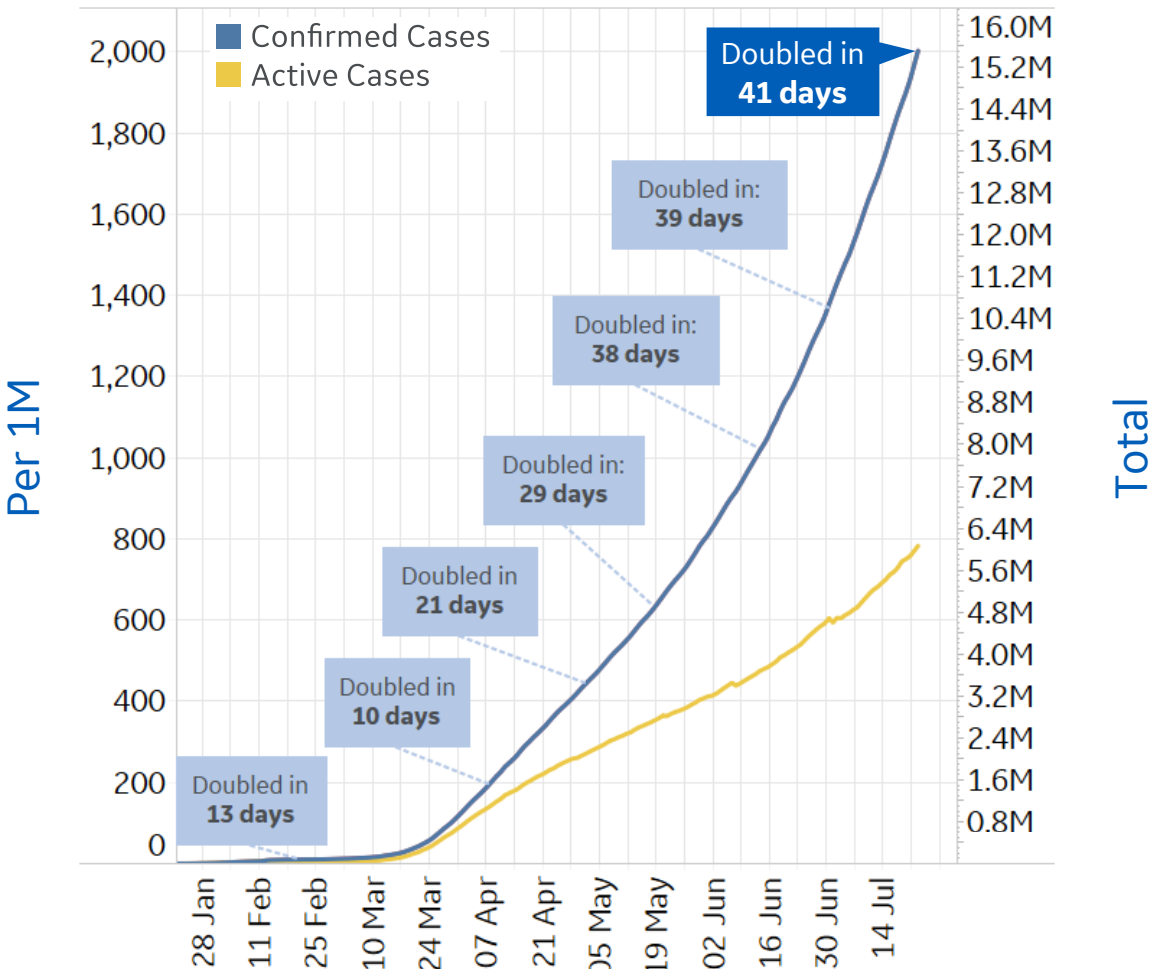




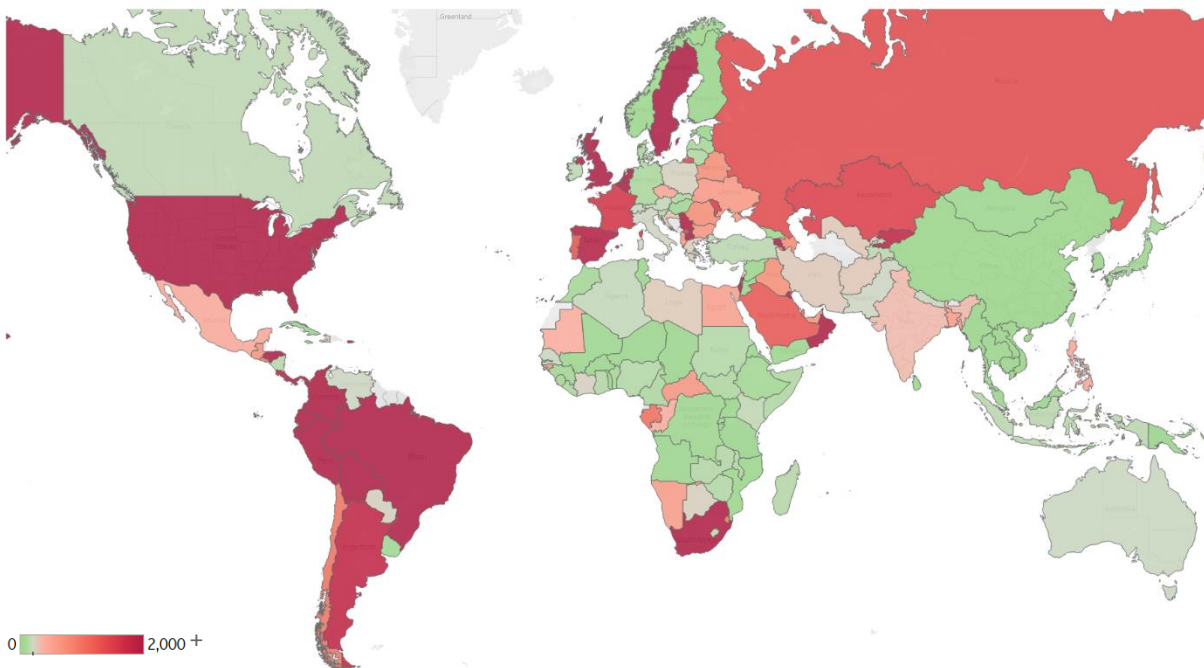
Global Confirmed & Active Cases

Trend since 22 Jan



Today per 1M

Active cases = Confirmed - Recovered - Deaths



Per 1M:	Today		Change
Active Today	783		+2%
Active	13	new	+2%
Confirmed	36	new	+2%
Deaths	1	new	+2%
Recovered	22	new	+2%



New Confirmed Cases & New Deaths

Key

North America

Europe

Middle East

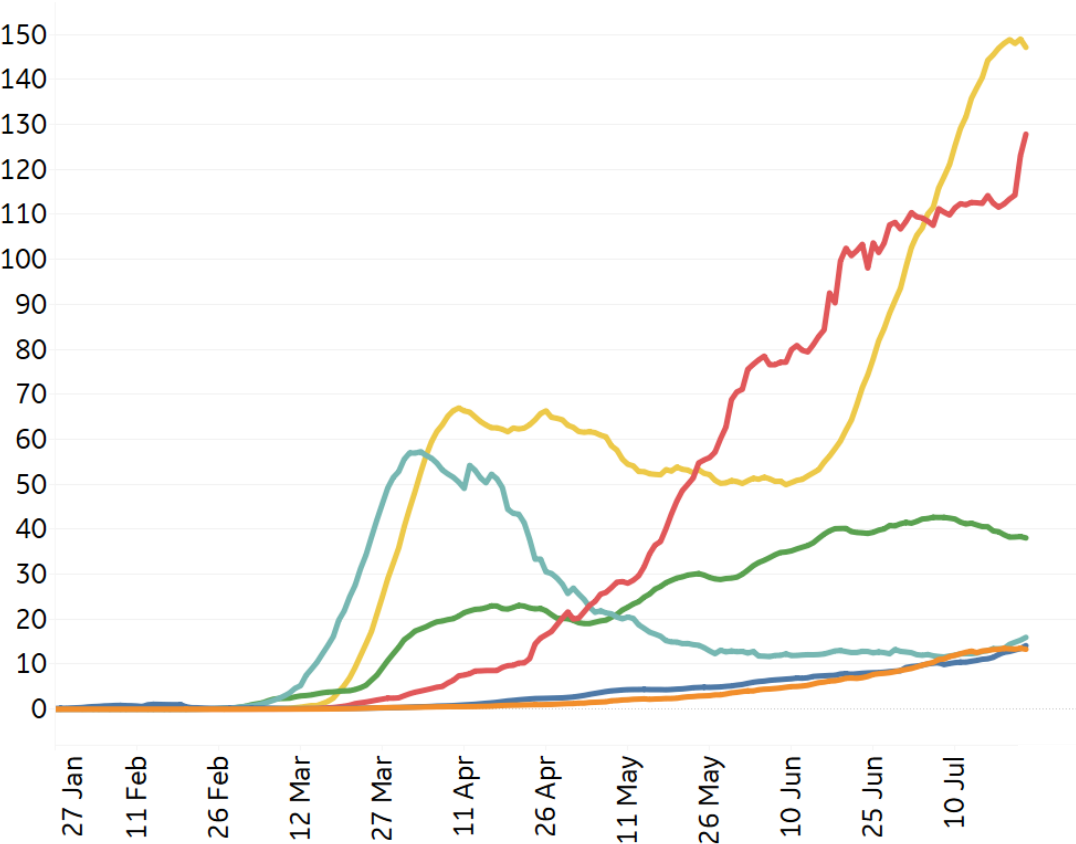
Central/South America

Asia

Africa

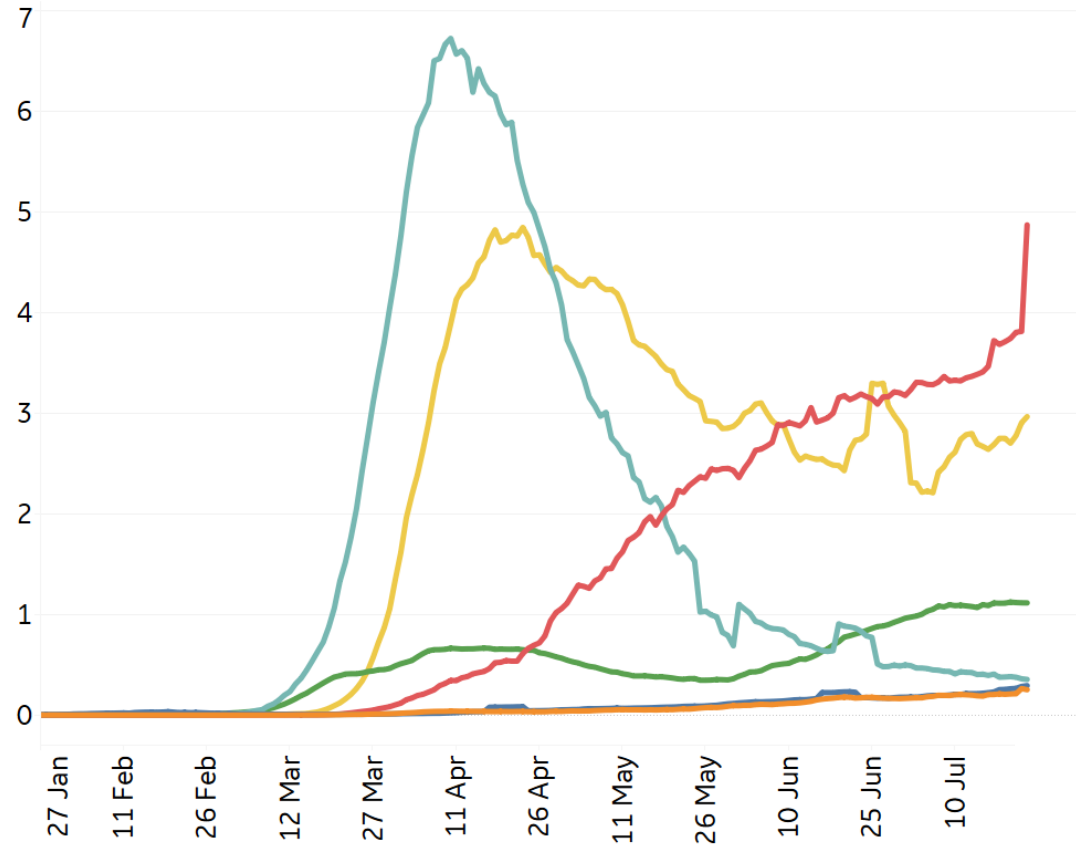
New Confirmed Cases / 1M

7-day rolling average



New Deaths / 1M

7-day rolling average





Top 50 Countries: Per 1M



1 - 25

	Active Today	Today			Total since 22 Jan		
		Confirmed	Deaths	Recovered	Total Confirmed	Total Deaths	Total Recovered
Belgium	3,250	19	0	2	5,595	847	1,499
UK	3,707	11	1	0	4,400	672	21
Spain	1,954	56	0	0	5,778	608	3,216
Sweden	7,237	26	1	0	7,799	562	0
Peru	2,957	138	118	113	11,255	535	7,763
France	1,622	16	0	8	3,319	462	1,235
Chile	967	123	6	114	17,721	462	16,291
US	8,040	207	3	68	12,202	436	3,726
Brazil	2,743	282	6	133	10,762	396	7,623
Netherlands	2,701	10	0	0	3,072	359	11
Ecuador	2,225	51	1	18	4,429	308	1,896
EU	962	18	0	7	3,116	304	1,849
Panama	5,511	211	7	164	13,168	280	7,377
Armenia	3,452	158	3	161	12,204	232	8,519
North Macedo..	1,993	59	1	0	4,641	214	2,434
Bolivia	3,668	96	7	27	5,590	206	1,716
Kyrgyzstan	1,839	347	15	384	4,789	186	2,765
Moldova	1,540	76	2	79	5,480	178	3,762
Portugal	1,305	22	0	37	4,843	167	3,371
Colombia	2,176	156	6	125	4,449	151	2,122
Romania	743	58	1	10	2,146	111	1,292
South Africa	2,794	221	3	120	6,880	103	3,984
Iraq	714	59	2	57	2,542	102	1,726
Honduras	3,175	81	1	13	3,726	102	449
Kuwait	2,155	161	1	170	14,488	99	12,234

26 - 50

	Active Today	Today			Total since 22 Jan		
		Confirmed	Deaths	Recovered	Total Confirmed	Total Deaths	Total Recovered
Dom. Rep.	2,738	145	0	40	5,311	93	2,480
Guatemala	653	59	3	62	2,355	91	1,611
Russia	1,381	40	1	57	5,439	88	3,970
Kosovo	1,520	98	4	73	3,505	86	1,899
Bos. and Herz.	1,469	106	2	63	2,884	84	1,331
Bahrain	2,028	211	2	305	22,330	79	20,224
Saudi Arabia	1,272	64	1	88	7,480	76	6,132
Oman	4,101	215	1	671	14,226	70	10,055
Argentina	1,826	136	3	51	3,275	60	1,390
Serbia	2,510	47	1	0	2,569	58	0
El Salvador	883	62	1	24	2,062	57	1,122
Qatar	1,063	129	0	131	37,571	57	36,451
Belarus	712	18	1	40	7,057	55	6,290
Israel	3,870	219	1	85	6,699	51	2,778
Bulgaria	647	39	1	56	1,418	47	724
Azerbaijan	751	34	1	53	2,858	39	2,069
Eq. Guinea	1,552	0	0	0	2,189	36	600
UAE	687	26	0	50	5,863	35	5,141
Kazakhstan	1,513	178	0	144	4,180	31	2,636
Eswatini	958	72	3	5	1,742	24	760
Gabon	1,036	0	0	0	2,960	21	1,903
Costa Rica	1,885	151	2	25	2,577	16	677
West Bank an..	1,523	76	0	168	2,133	15	595
Singapore	693	61	0	37	8,392	5	7,694
Total World	783	36	1	22	2,003	82	1,138

Several countries are revising and updating case counts

Reported deaths in **Peru** increased 79% (+7,794 deaths) since 1 July

Sorted by Total Deaths / 1M
Top 50 countries selected by Active Cases / 1M
Excluded countries with population < 1M



Top 50 Countries: Raw Volume



1 - 25

	Active Cases	Today			Total since 22 Jan		
		Confirmed	Deaths	Recovered	Total Confirmed	Total Deaths	Total Recovered
US	2,661,175	68,663	1,114	22,420	4,038,748	144,304	1,233,269
EU	428,417	8,047	105	3,138	1,387,193	135,440	823,336
Brazil	583,080	59,961	1,311	28,338	2,287,475	84,082	1,620,313
UK	251,667	779	53	9	298,731	45,639	1,425
Mexico	53,350	8,438	718	5,307	370,712	41,908	275,454
Italy	12,404	306	10	214	245,338	35,092	197,842
India	440,298	49,310	740	34,602	1,288,108	30,601	817,209
France	105,882	1,062	10	516	216,667	30,185	80,600
Spain	91,361	2,615	3	0	270,166	28,429	150,376
Peru	97,497	4,546	3,887	3,699	371,096	17,654	255,945
Iran	21,730	2,621	221	2,390	284,034	15,074	247,230
Russia	201,552	5,830	147	8,246	793,720	12,873	579,295
Belgium	37,666	220	4	22	64,847	9,812	17,369
Germany	6,631	605	8	512	204,881	9,110	189,140
Canada	5,542	608	6	436	114,398	8,919	99,937
Chile	18,490	2,357	116	2,190	338,759	8,838	311,431
Colombia	110,734	7,945	315	6,338	226,373	7,688	107,951
Netherlands	46,287	165	0	1	52,640	6,158	195
South Africa	165,699	13,104	153	7,085	408,052	6,093	236,260
Pakistan	44,854	1,209	54	6,608	270,400	5,763	219,783
Sweden	73,087	259	9	0	78,763	5,676	0
Turkey	11,387	913	18	1,151	223,315	5,563	206,365
Ecuador	39,254	891	21	330	78,148	5,439	33,455
China	1,099	139	1	53	86,045	4,649	80,297
Indonesia	36,917	1,906	117	1,909	93,657	4,576	52,164

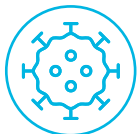
26 - 50

	Active Cases	Today			Total since 22 Jan		
		Confirmed	Deaths	Recovered	Total Confirmed	Total Deaths	Total Recovered
Egypt	54,867	668	40	991	90,413	4,480	31,066
Iraq	28,699	2,361	80	2,258	102,226	4,122	69,405
Bangladesh	94,101	2,856	50	2,006	216,110	2,801	119,208
Argentina	82,510	6,127	114	2,284	148,027	2,702	62,815
Saudi Arabia	44,269	2,238	34	3,092	260,394	2,635	213,490
Bolivia	42,815	1,117	79	309	65,252	2,407	20,030
Romania	14,287	1,112	25	199	41,275	2,126	24,862
Philippines	48,136	2,121	28	760	74,390	1,871	24,383
Portugal	13,305	229	3	370	49,379	1,705	34,369
Poland	8,388	418	9	402	41,580	1,651	31,541
Guatemala	11,704	1,057	59	1,100	42,192	1,632	28,856
Ukraine	26,564	874	17	859	63,169	1,570	35,035
Panama	23,780	911	29	706	56,817	1,209	31,828
Dom. Rep.	29,704	1,572	1	439	57,615	1,006	26,905
Nigeria	22,054	604	20	246	38,948	833	16,061
Kazakhstan	28,413	3,333	0	2,698	78,486	585	49,488
Belarus	6,730	167	6	378	66,688	519	59,439
Israel	33,496	1,897	12	734	57,982	442	24,044
Kuwait	9,204	687	4	727	61,872	421	52,247
Oman	20,942	1,099	6	3,427	72,646	355	51,349
UAE	6,798	254	0	494	57,988	342	50,848
Qatar	3,062	373	1	377	108,244	164	105,018
Bahrain	3,450	359	4	518	37,996	134	34,412
Singapore	4,056	354	0	220	49,098	27	45,015
Total World	6,063,875	282,724	9,966	170,164	15,511,157	633,396	8,813,886

Several countries are revising and updating case counts

Global Confirmed cases increased 24% (~3M cases) in the last two weeks

Sorted by Total Deaths
Top 50 countries selected by Total Confirmed Cases
Excluded countries with population < 1M



United States: Per 1M



1 - 26

	Active Today	Today			Total since 22 Jan		
		Confirmed	Deaths	Recovered	Total Confirmed	Total Deaths	Total Recovered
New Jersey	14,662	27	3	8	20,027	1,771	3,594
New York	15,660	42	2	4	21,060	1,675	3,725
Connecticut	9,903	3	1	14	13,528	1,237	2,389
Massachuse..	1,409	47	2	0	16,634	1,231	13,994
Rhode Island	14,526	81	4	9	17,131	945	1,660
DC	12,710	60	1	65	16,395	823	2,862
Louisiana	7,877	494	3	0	21,866	769	13,220
Michigan	2,290	70	1	0	8,454	640	5,523
Illinois	12,669	128	2	0	13,265	597	N/A
Maryland	11,908	110	1	0	13,371	564	899
Pennsylvania	1,849	66	1	56	8,517	554	6,114
Delaware	5,650	136	2	35	14,299	543	8,106
Mississippi	5,478	330	4	0	16,146	483	10,186
Indiana	2,097	138	3	190	8,853	428	6,328
Arizona	17,880	321	12	61	21,012	421	2,712
Georgia	14,433	405	2	0	14,750	317	N/A
Colorado	6,150	107	3	5	7,344	310	885
New Hamps..	421	17	2	18	4,647	298	3,928
Alabama	8,220	489	7	566	15,135	285	6,630
New Mexico	5,052	160	2	50	8,662	284	3,326
Minnesota	815	135	2	51	8,639	284	7,540
Ohio	1,816	124	2	109	6,860	279	4,765
Iowa	3,503	186	2	100	12,930	260	9,167
S. Carolina	9,364	304	10	0	14,879	259	5,256
Florida	17,895	477	8	0	18,152	257	N/A
Virginia	8,049	99	0	17	9,518	241	1,228

27 - 51

	Active Today	Today			Total since 22 Jan		
		Confirmed	Deaths	Recovered	Total Confirmed	Total Deaths	Total Recovered
Nevada	12,413	410	2	19	12,960	230	317
California	10,695	240	4	0	10,902	208	N/A
Washington	6,373	100	2	0	6,567	195	N/A
Missouri	6,008	255	5	0	6,201	194	N/A
N. Carolina	2,542	176	2	0	10,214	167	7,504
Nebraska	3,103	172	3	57	12,313	163	9,046
Texas	5,676	325	6	294	12,865	159	7,029
Kentucky	3,898	136	2	10	5,629	153	1,577
Wisconsin	1,635	181	2	141	7,883	151	6,097
South Dakota	913	75	2	62	9,205	137	8,155
Tennessee	5,037	376	5	280	12,738	135	7,565
Arkansas	2,323	336	2	290	12,015	128	9,565
North Dakota	1,209	165	1	89	7,208	127	5,872
Oklahoma	1,276	N/A	1	214	7,068	121	5,671
Kansas	7,752	163	0	0	8,223	111	360
Vermont	264	18	0	6	2,207	90	1,853
Maine	283	11	0	17	2,780	88	2,410
Utah	3,974	163	2	175	11,260	83	7,203
Idaho	6,633	232	2	135	9,366	77	2,656
Oregon	2,829	76	0	30	3,725	65	832
West Virginia	802	134	1	161	3,042	57	2,183
Wyoming	912	102	0	85	4,055	43	3,100
Montana	1,197	91	1	41	2,722	40	1,485
Alaska	1,896	85	0	46	2,998	26	1,076
Hawaii	248	39	1	20	1,052	18	786

N/As are due to states revising and updating case counts

Confirmed Cases in **Ohio** increased 28% (+17,315 cases) in the last two weeks

Sorted by Total Deaths / 1M



United States: Raw Volume



1 - 26

		Today			Total since 22 Jan		
	Active Cases	Confirmed	Deaths	Recovered	Total Confirmed	Total Deaths	Total Recovered
New York	304,637	811	36	80	409,697	32,594	72,466
New Jersey	130,232	242	23	75	177,887	15,730	31,925
Massachuse..	9,711	327	16	0	114,647	8,484	96,452
California	422,572	9,487	154	0	430,773	8,201	N/A
Illinois	160,536	1,621	20	0	168,096	7,560	N/A
Pennsylvania	23,676	850	16	721	109,037	7,093	78,268
Michigan	22,874	701	7	0	84,431	6,395	55,162
Florida	384,350	10,249	173	0	389,868	5,518	N/A
Texas	164,589	9,422	183	8,511	373,037	4,622	203,826
Connecticut	35,306	9	4	50	48,232	4,410	8,516
Louisiana	36,620	2,296	16	0	101,650	3,574	61,456
Maryland	71,993	664	4	0	80,836	3,409	5,434
Georgia	153,246	4,305	26	0	156,607	3,361	N/A
Ohio	21,228	1,444	21	1,276	80,186	3,256	55,702
Arizona	130,144	2,335	89	444	152,944	3,063	19,737
Indiana	14,119	929	17	1,281	59,602	2,880	42,603
Virginia	68,704	844	3	148	81,237	2,054	10,479
Colorado	35,414	615	15	31	42,295	1,786	5,095
N. Carolina	26,662	1,849	24	0	107,125	1,756	78,707
Minnesota	4,596	760	9	290	48,721	1,601	42,524
Washington	48,527	762	14	0	50,009	1,482	N/A
Mississippi	16,302	982	13	0	48,053	1,436	30,315
Alabama	40,305	2,399	33	2,774	74,212	1,397	32,510
S. Carolina	48,210	1,564	49	0	76,606	1,334	27,062
Missouri	36,871	1,563	30	0	38,060	1,189	N/A

27 - 51

		Today			Total since 22 Jan		
	Active Cases	Confirmed	Deaths	Recovered	Total Confirmed	Total Deaths	Total Recovered
Rhode Island	15,388	86	4	10	18,148	1,001	1,759
Tennessee	34,401	2,570	37	1,913	86,987	925	51,661
Wisconsin	9,519	1,052	13	820	45,899	878	35,502
Iowa	11,052	588	6	317	40,796	820	28,924
Nevada	38,235	1,262	5	58	39,919	709	975
Kentucky	17,417	607	7	46	25,147	684	7,046
New Mexico	10,593	335	5	104	18,163	596	6,974
DC	8,970	42	1	46	11,571	581	2,020
Delaware	5,502	132	2	34	13,924	529	7,893
Oklahoma	5,051	N/A	3	845	27,969	477	22,441
New Hamps..	572	23	3	25	6,318	405	5,341
Arkansas	7,009	1,013	6	874	36,259	386	28,864
Kansas	22,584	475	1	0	23,956	322	1,050
Nebraska	6,003	332	5	110	23,818	316	17,499
Oregon	11,931	320	2	128	15,713	273	3,509
Utah	12,739	521	7	561	36,099	267	23,093
Idaho	11,853	415	3	242	16,737	138	4,746
South Dakota	808	66	2	55	8,143	121	7,214
Maine	380	N/A	0	23	3,737	118	3,239
West Virginia	1,437	240	1	288	5,452	102	3,913
North Dakota	921	126	1	68	5,493	97	4,475
Vermont	165	11	0	4	1,377	56	1,156
Montana	1,279	97	1	44	2,909	43	1,587
Hawaii	351	55	1	29	1,490	26	1,113
Wyoming	528	59	0	49	2,347	25	1,794
Alaska	1,387	62	0	34	2,193	19	787

N/As are due to states revising and updating case counts

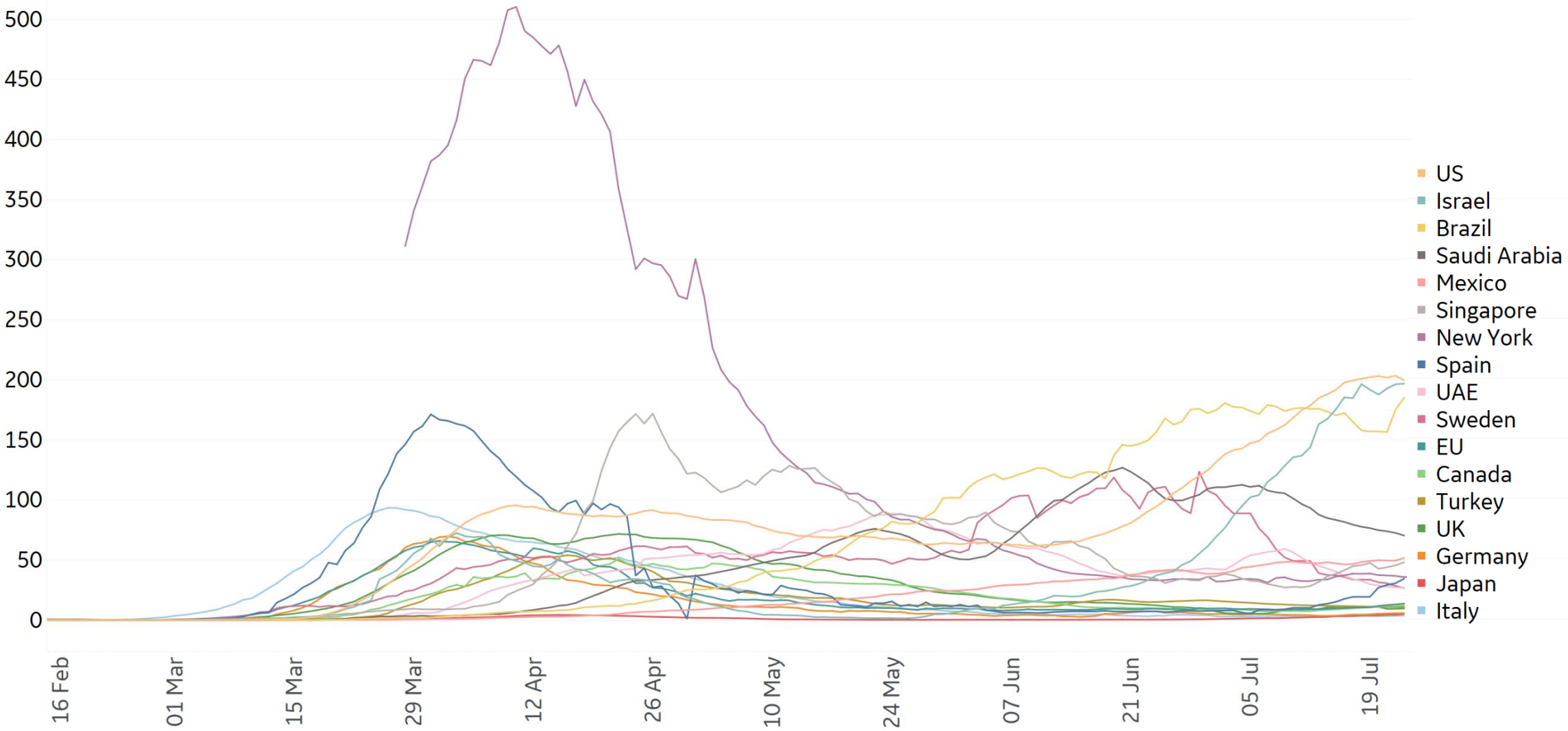
Confirmed Cases in **California** increased 15% (+57,514 cases) in the last week

Sorted by volume of Total Deaths



New Confirmed Cases in Select Areas

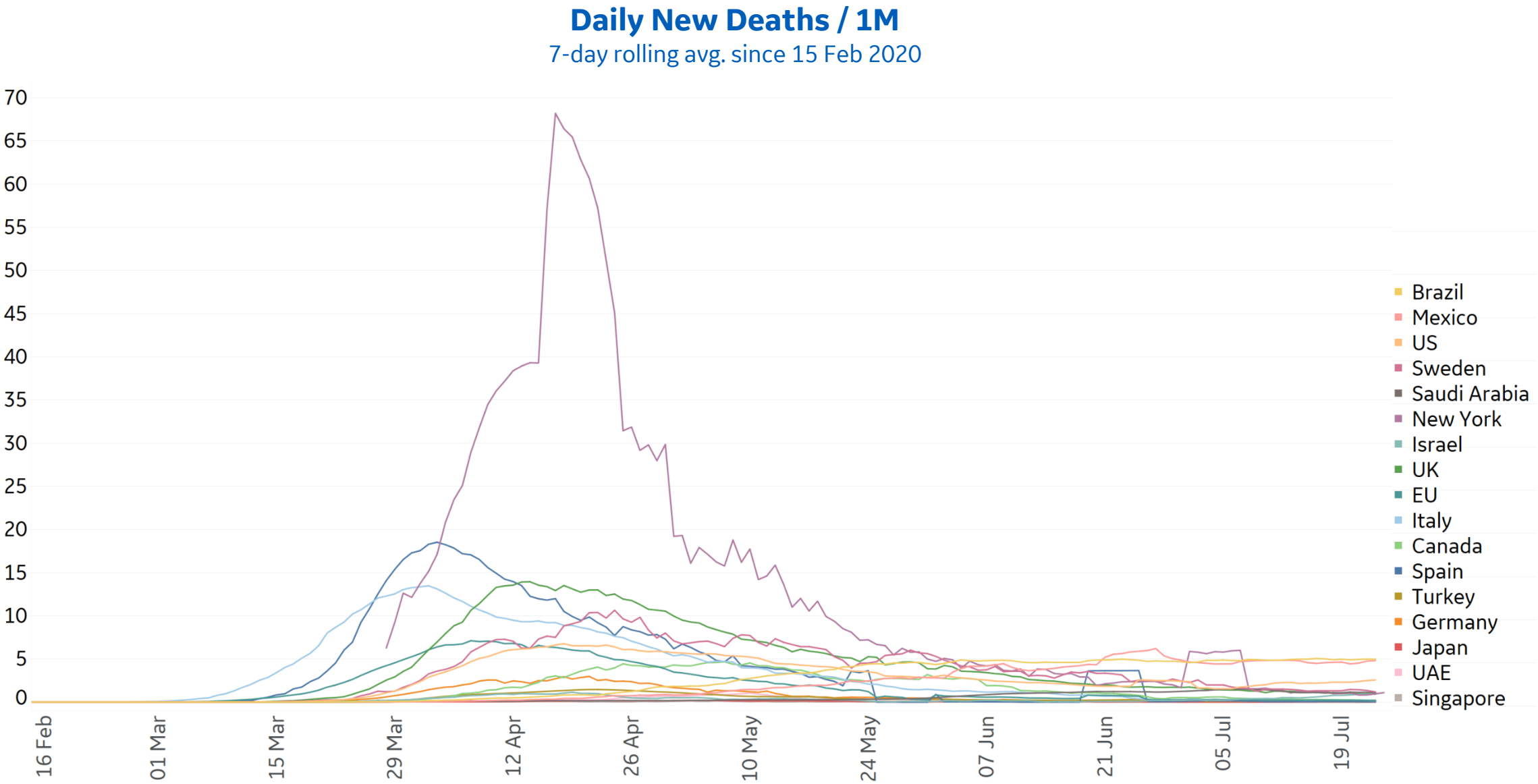
Daily New Confirmed Cases / 1M
7-day rolling avg. since 15 Feb 2020



*New York State Included as Country in Today's Report



New Deaths in Select Areas

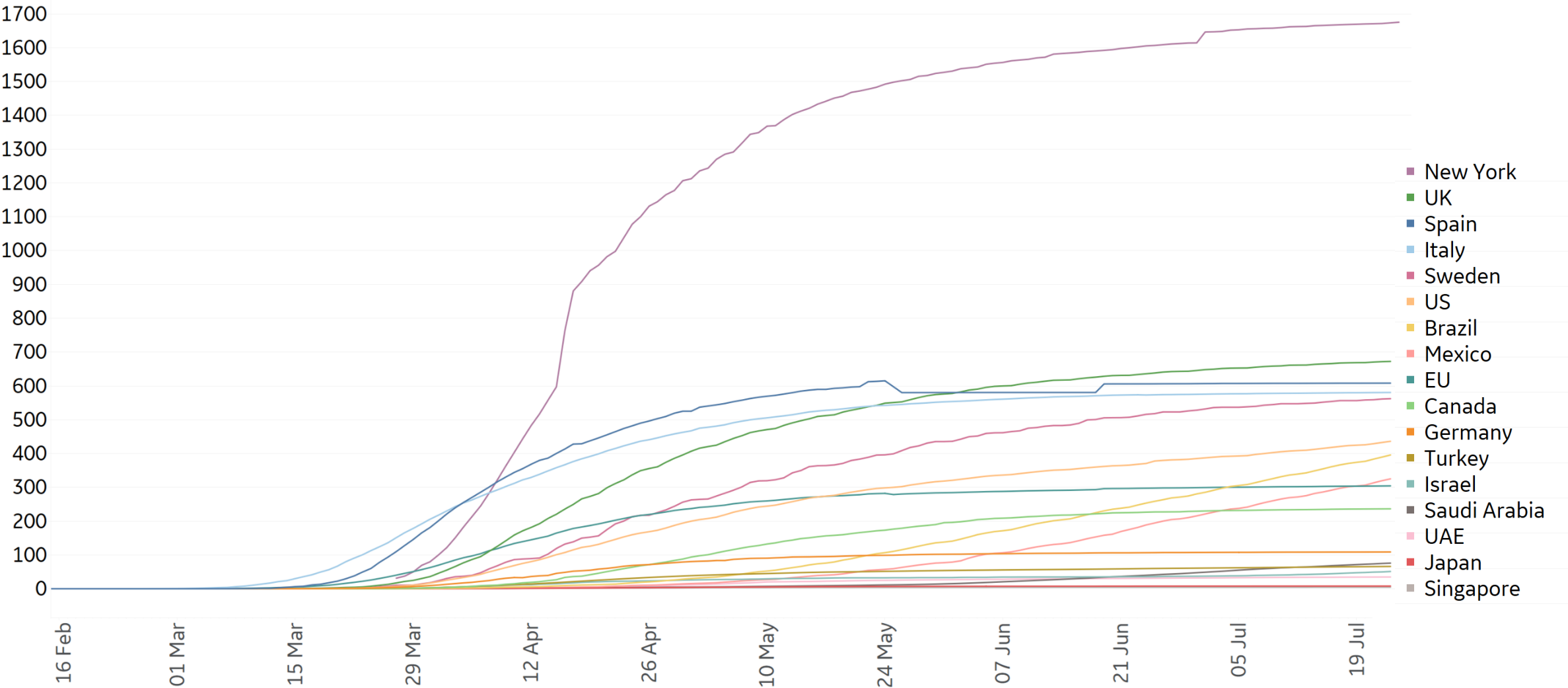


*New York State Included as Country in Today's Report



Cumulative Deaths in Select Areas

Cumulative Deaths / 1M
Since 15 Feb 2020



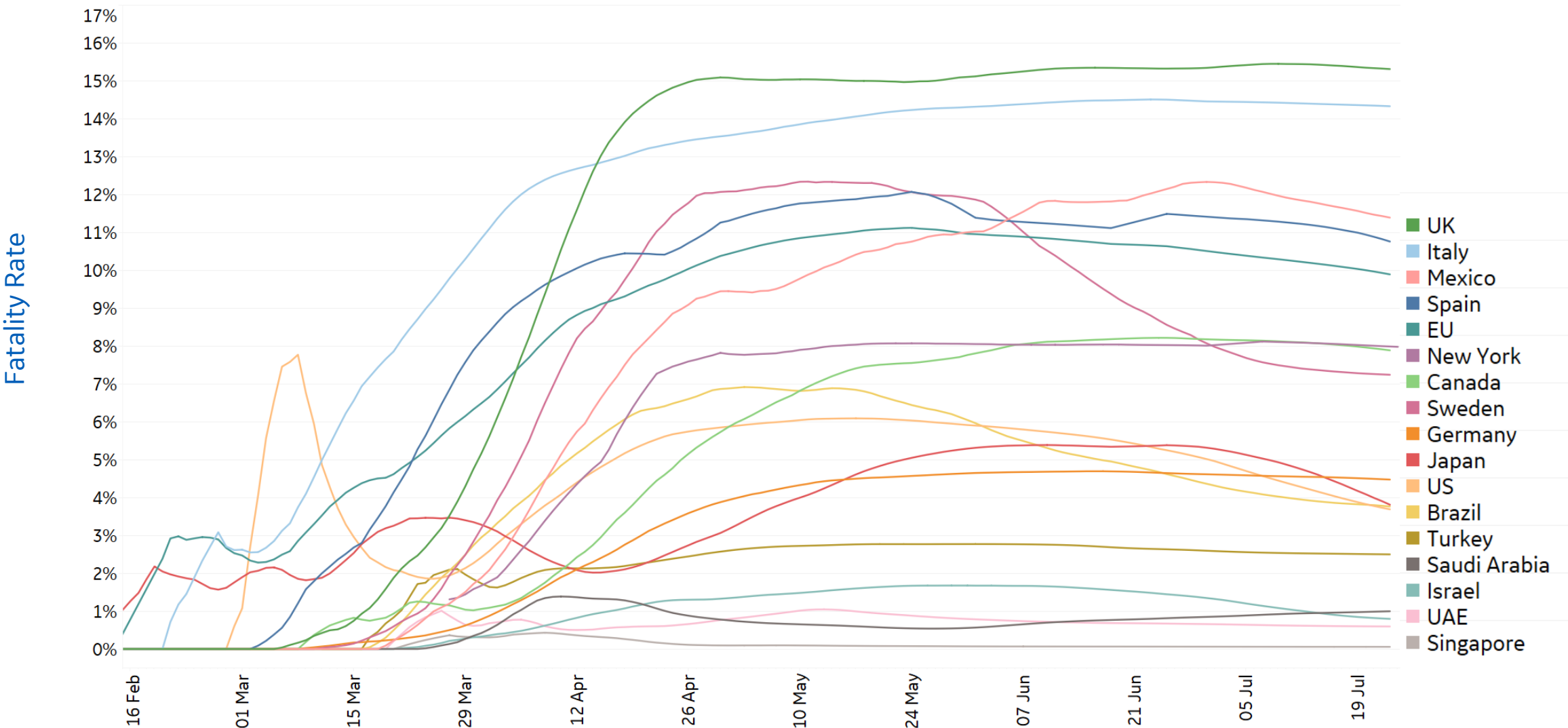
*New York State Included as Country in Today's Report



Fatality Rate in Select Areas

Deaths / Confirmed Cases

7-day rolling avg. since 15 Feb 2020



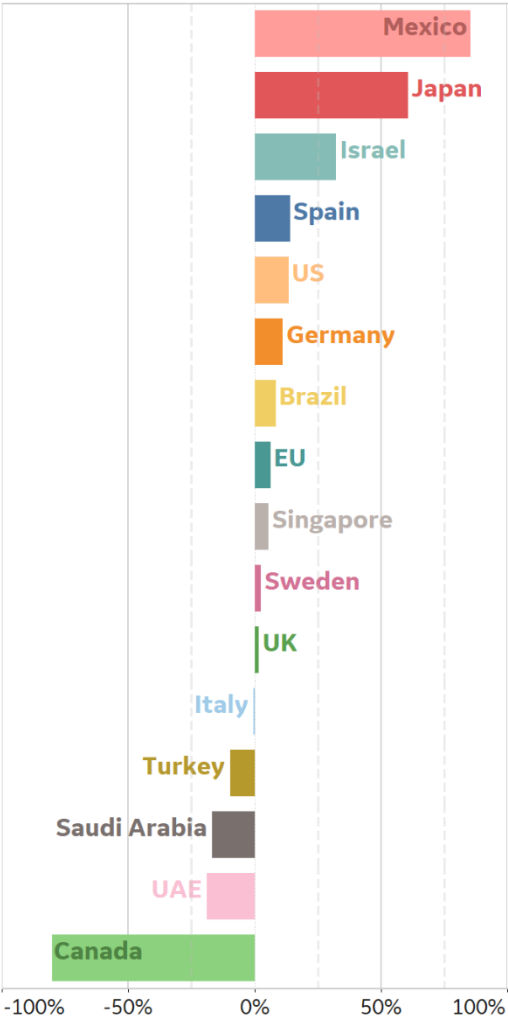
*New York State Included as Country in Today's Report



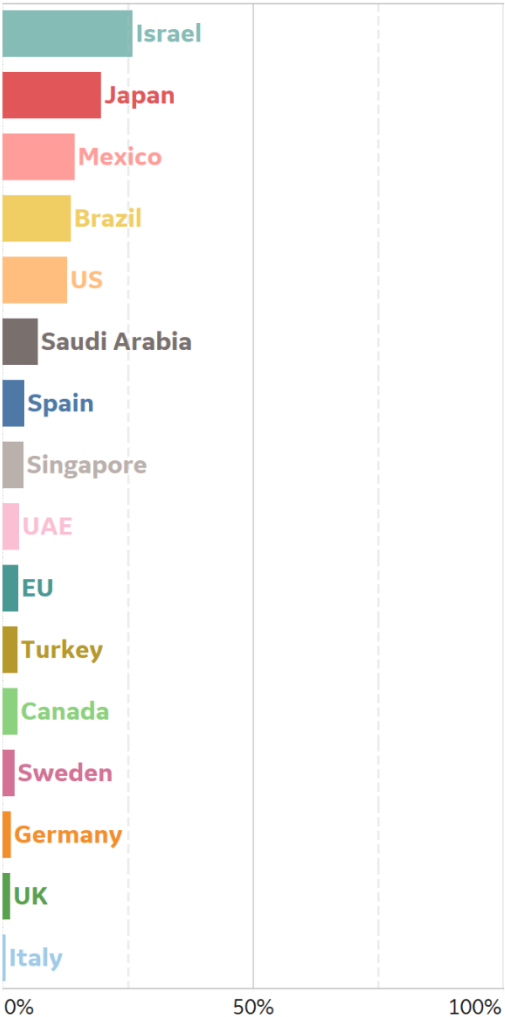
% Change in Case Volume in Select Countries

Over Previous 7 days

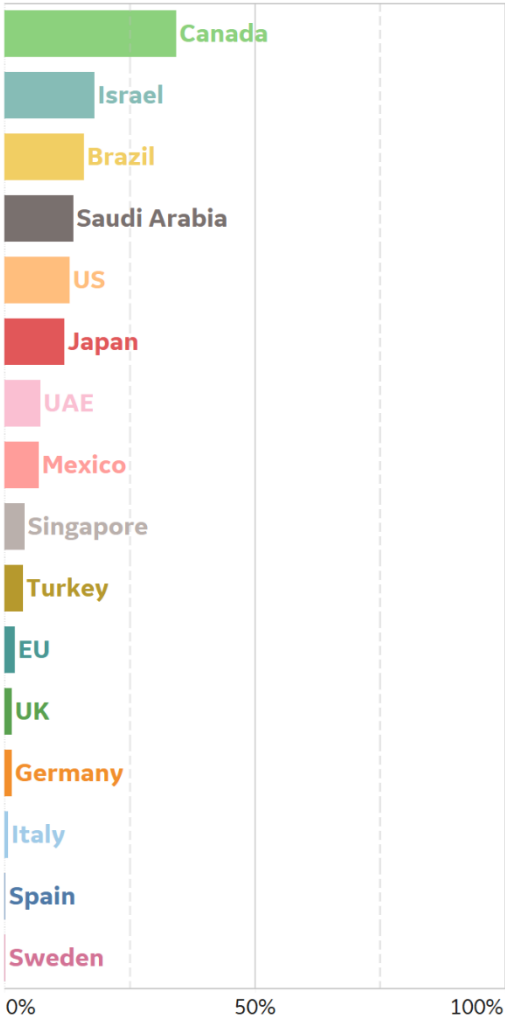
Active Cases



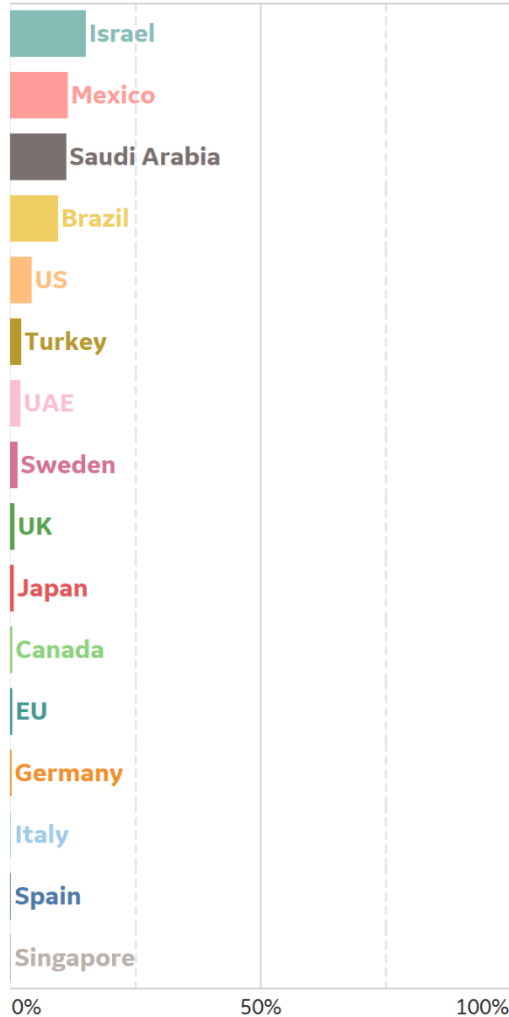
Confirmed Cases

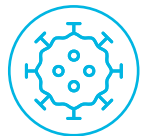


Reported Recoveries



Reported Deaths





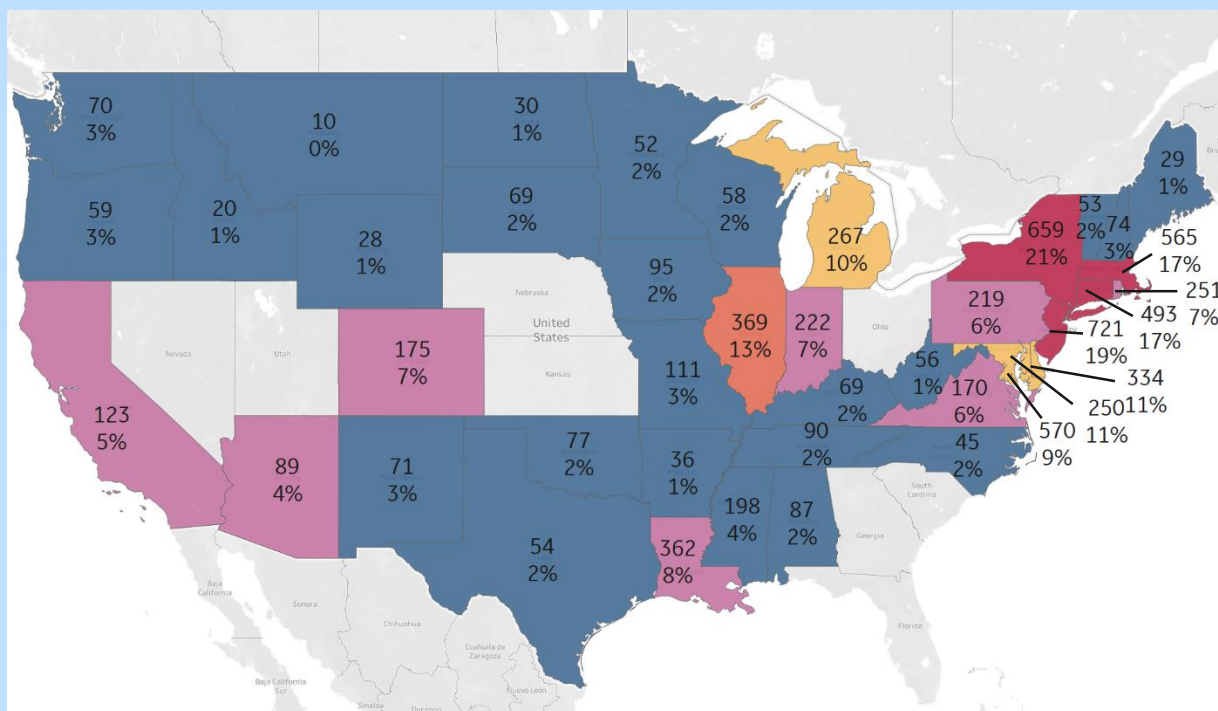
Feature: US COVID Hospitalizations Over Time



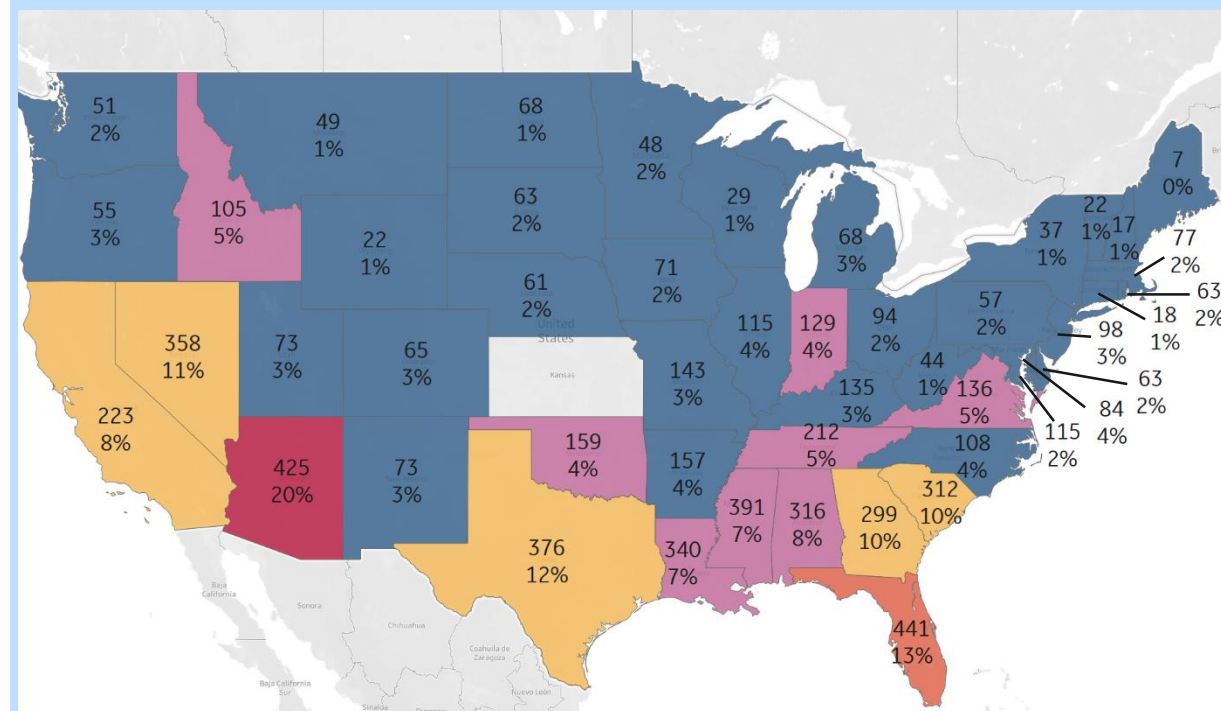
Current Hospitalizations / 1M, 7d Rolling Avg. % Beds Occupied by COVID Patients

27 April

Previous Hospitalization Peak



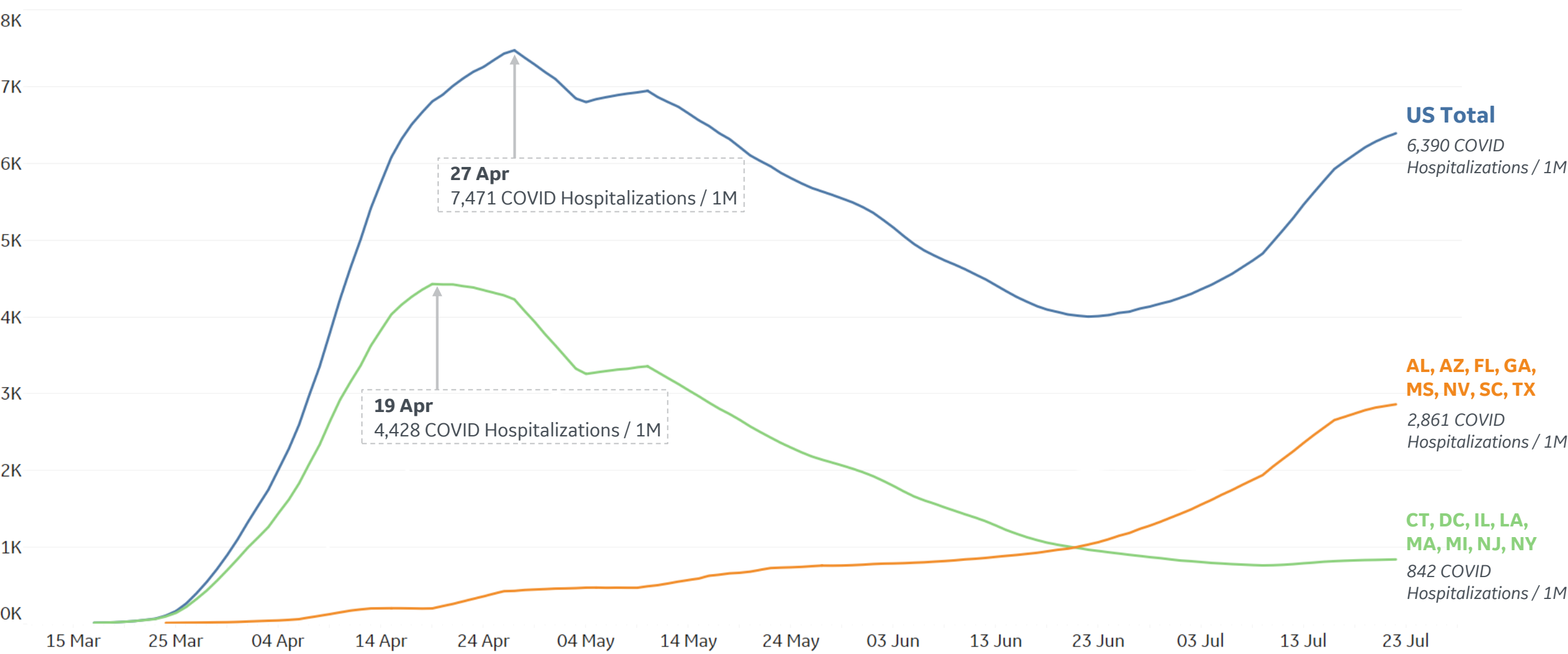
22 July

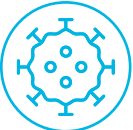




Feature: US COVID Hospitalizations Over Time

Current Hospitalizations / 1M 7d rolling avg.
Grouped by **States with peak COVID hospitalizations in April** vs **States currently experiencing an increase in COVID hospitalizations**

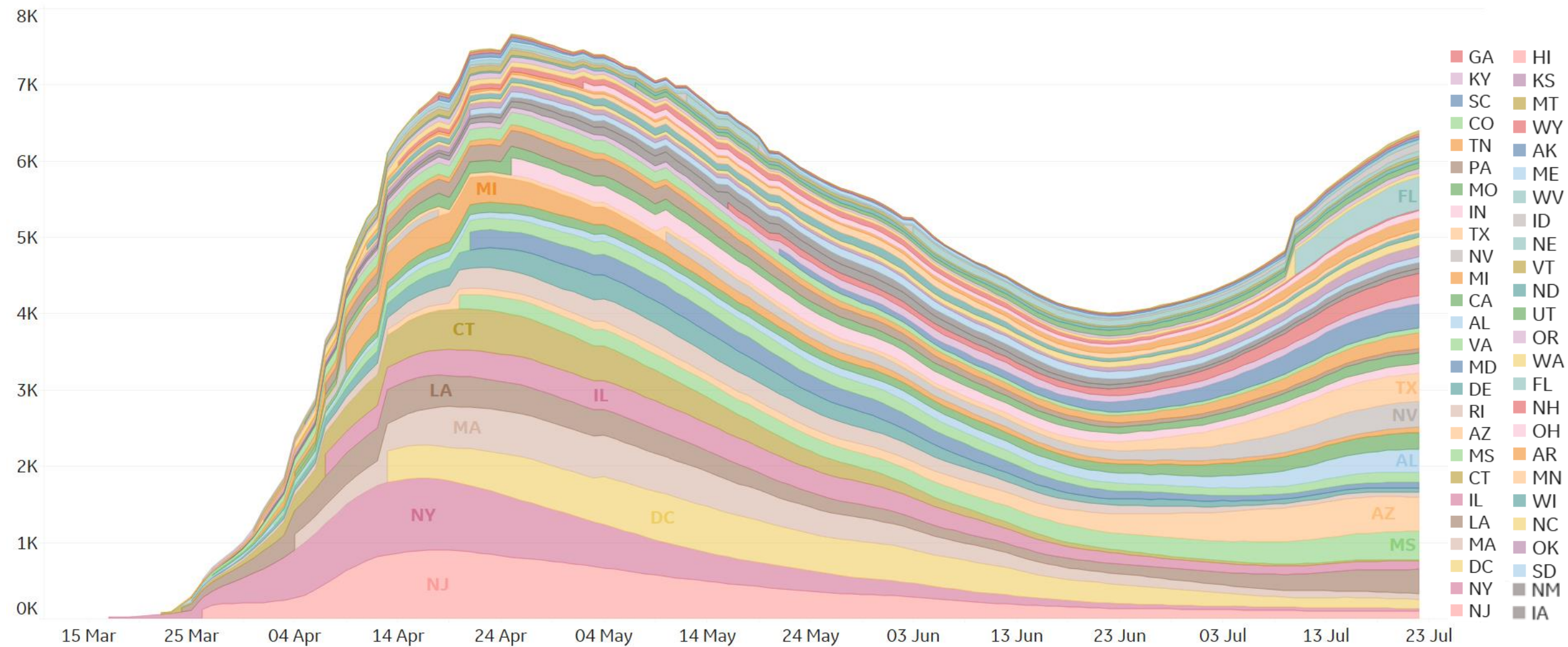




Feature: US COVID Hospitalizations Over Time

Current Hospitalizations / 1M

7d rolling avg.





Per 1M in Region

	Today	Change
Active Cases	1,006	+0.2%
Confirmed	27 new	+1%
Deaths	1 new	+0.3%
Recovered	23 new	+1%

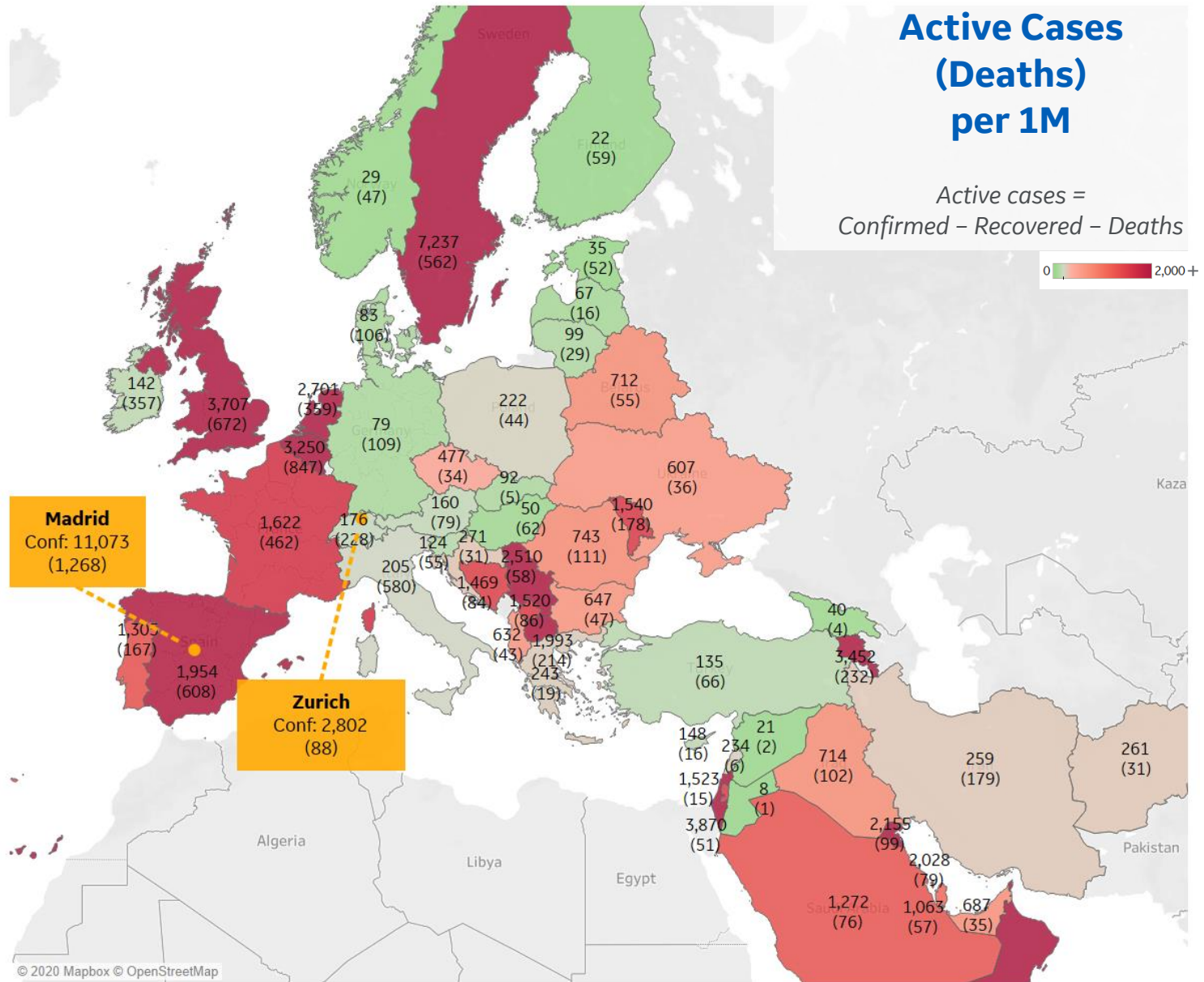
Most Active Cases per 1M

Sweden	7,237
Oman	4,101
Israel	3,870
UK	3,707
Armenia	3,452
Belgium	3,250
Netherlands	2,701
Serbia	2,510
Kuwait	2,155
Bahrain	2,028

* Excludes regions with population < 1M

Active Cases (Deaths) per 1M

Active cases =
Confirmed - Recovered - Deaths





Per 1M in Region

	Today	Change
Active Cases	3,465	+0.3%
Confirmed	11 new	+0.2%
Deaths	1 new	+0.13%
Recovered	0 new	+0%

Most Active Cases per 1M

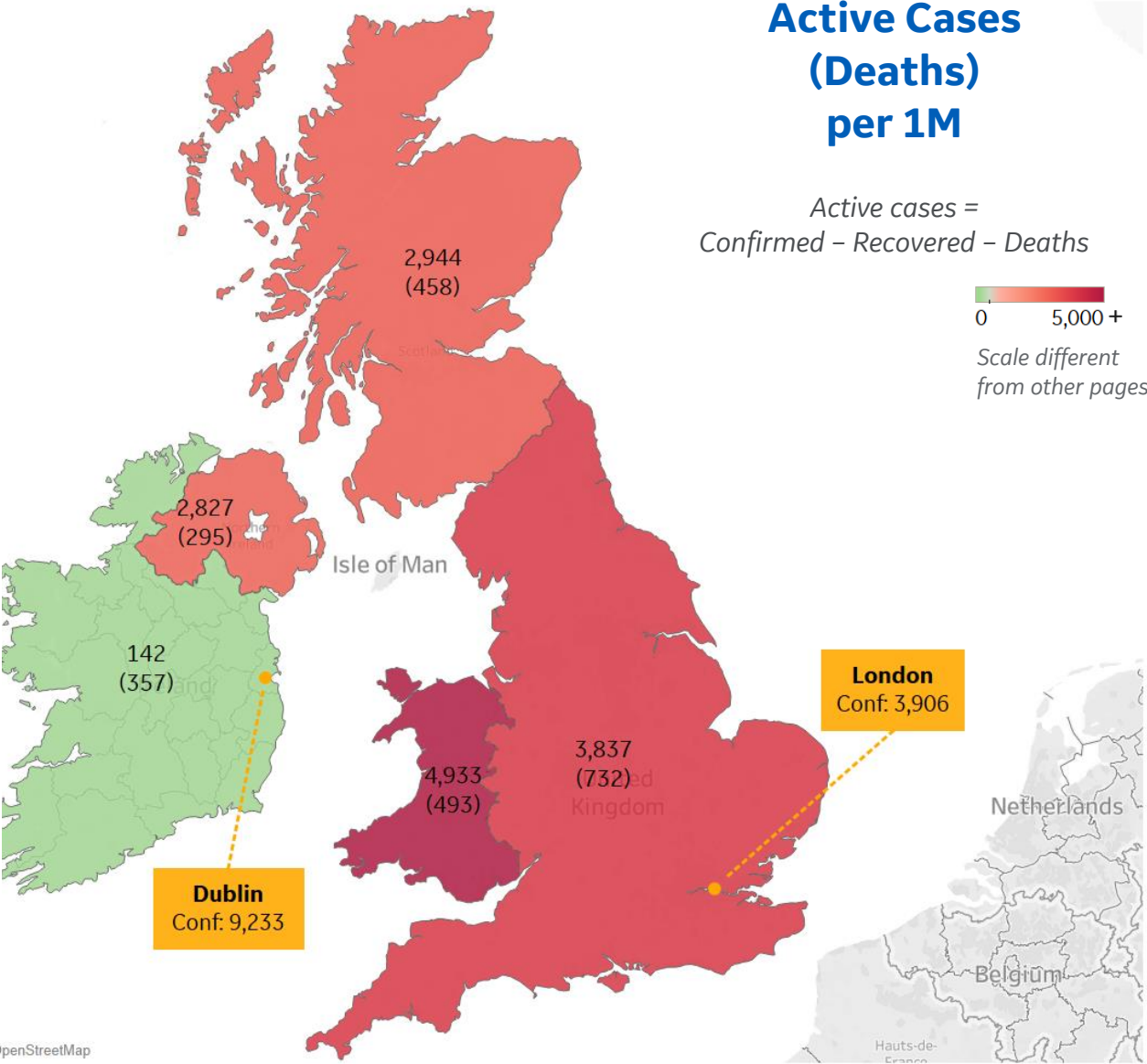
Wales	4,933
England	3,837
Scotland	2,944
Northern Ireland	2,827
Ireland	142

Active Cases (Deaths) per 1M

Active cases =
Confirmed – Recovered – Deaths

0 5,000 +

Scale different
from other pages



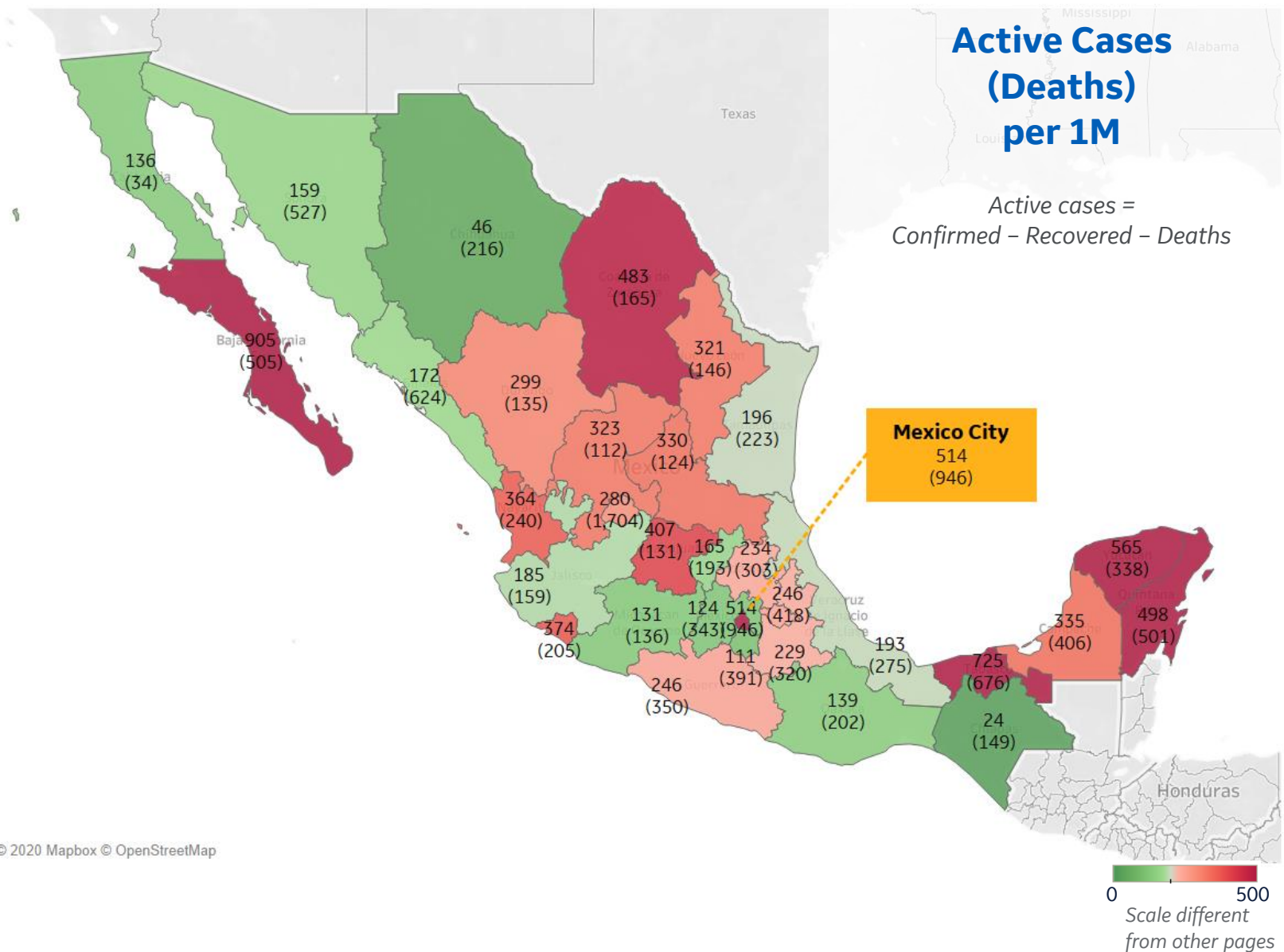


Per 1M in Region

	Today	Change
Active Cases	414	+5%
Confirmed	65 new	+2%
Deaths	6 new	+2%
Recovered	41 new	+2%

Most Active Cases per 1M

Baja California Sur	905
Tabasco	725
Yucatan	565
Distrito Federal	514
Quintana Roo	498
Coahuila	483
Guanajuato	407
Colima	374
Nayarit	364
Campeche	335



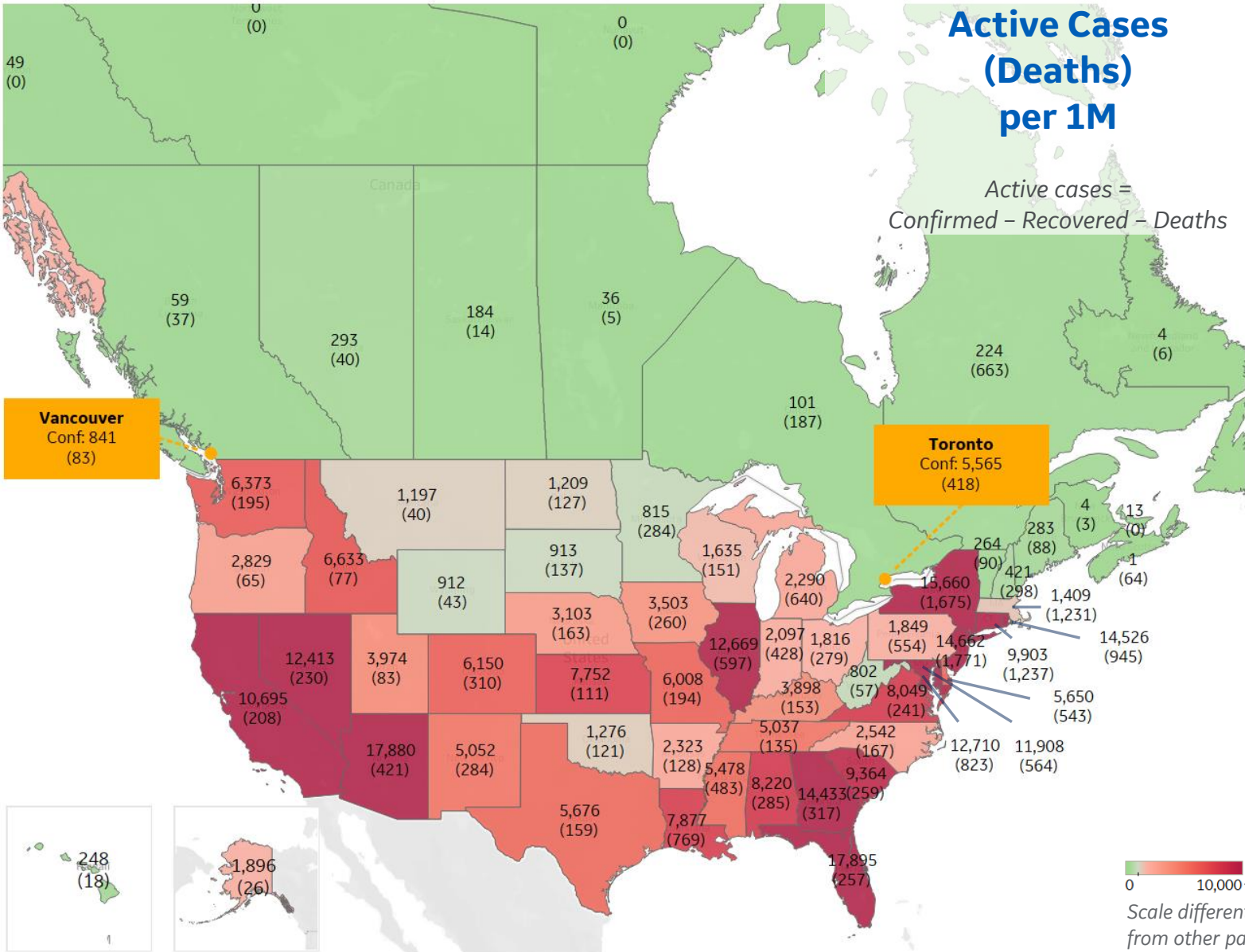


Per 1M in Region

	Today	Change
Active Cases	7,232	+2%
Confirmed	188 new	+2%
Deaths	3 new	+0.7%
Recovered	62 new	+2%

Most Active Cases per 1M

Florida	17,895
Arizona	17,880
New York	15,660
New Jersey	14,662
Rhode Island	14,526
Georgia	14,433
DC	12,710
Illinois	12,669
Nevada	12,413
Maryland	11,908

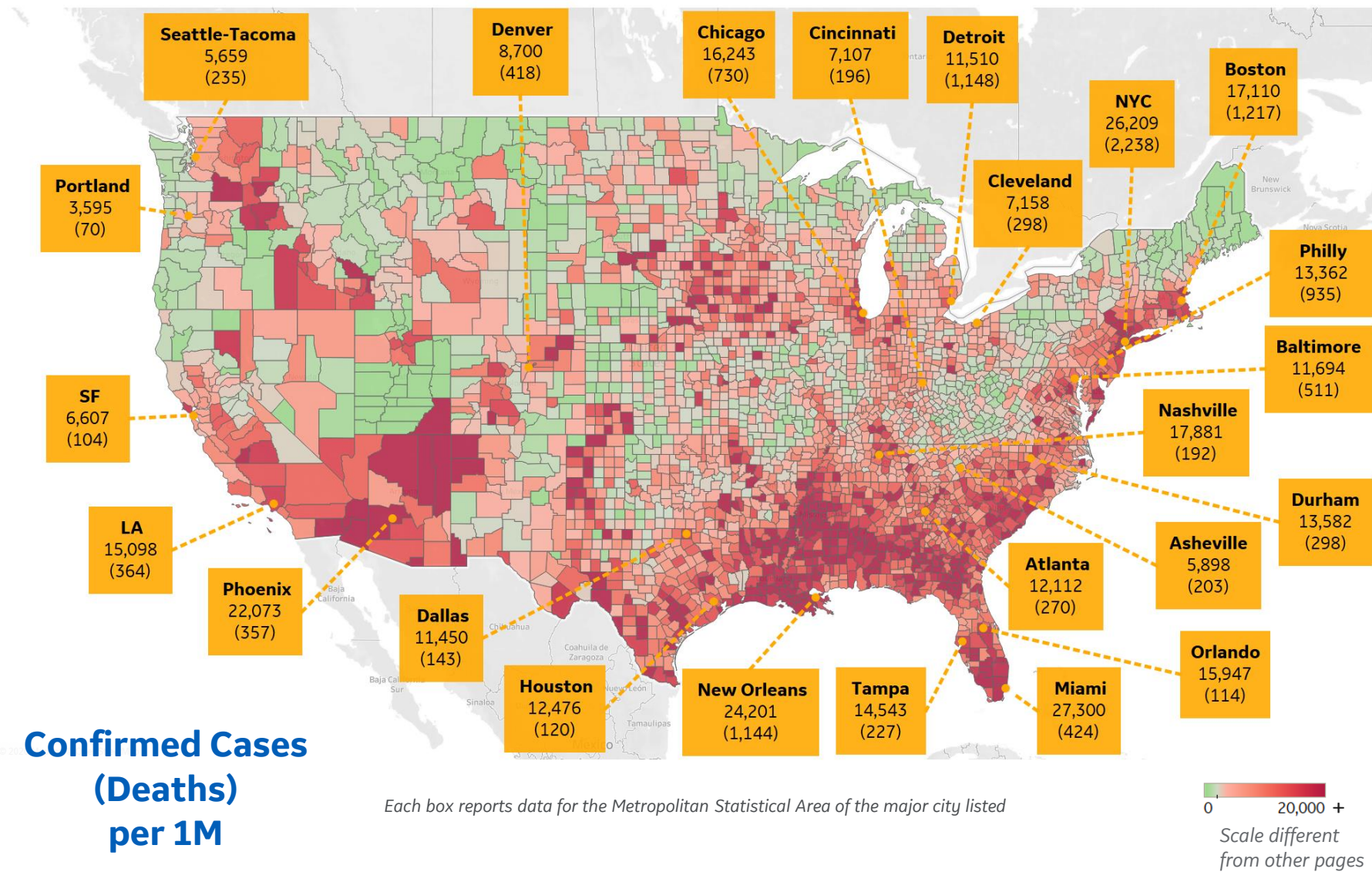




US by County & Metro, Total to Date

Updated 24 July 2020, 3:30 GMT

19



Top 10 Northeast Counties

Total Confirmed Cases / 1M

Rockland County, NY	42,420
Westchester County, NY	36,865
Passaic County, NJ	34,303
Nassau County, NY	31,554
Union County, NJ	29,293
Suffolk County, NY	28,928
Hudson County, NJ	28,687
Orange County, NY	28,493
New York City*	26,729
Suffolk County, MA	25,789

Top 10 Other US Counties

Total Confirmed Cases / 1M

Yakima County, WA	37,338
Miami-Dade County, FL	34,991
Jefferson Parish, LA	29,931
Nueces County, TX	27,494
Orleans Parish, LA	24,732
Charleston County, SC	24,633
Davidson County, TN	24,427
Prince George's County, MD	23,136
Broward County, FL	23,049
Maricopa County, AZ	22,795

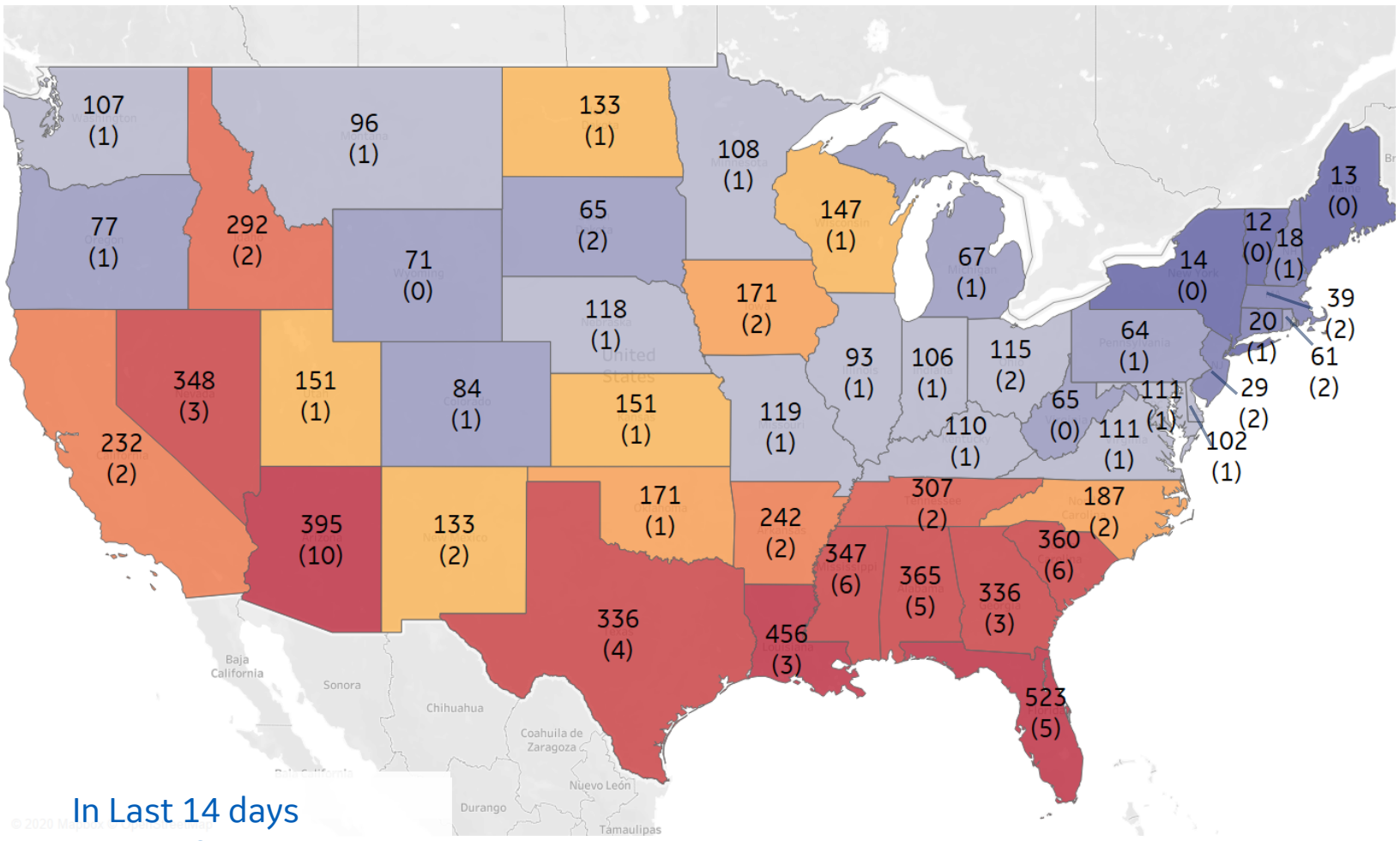
Note: Includes counties ≥ 250K population
* New York City counties aggregated into one reporting area



US, New in Last 14 days

Updated 24 July 2020, 3:30 GMT

20



Top 10 by New Confirmed

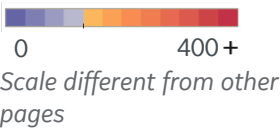
Avg New Confirmed Cases / 1M

Florida	523
Louisiana	456
Arizona	395
Alabama	365
South Carolina	360
Nevada	348
Mississippi	347
Texas	336
Georgia	336
Tennessee	307

Top 10 by New Deaths

Avg New Deaths / 1M

Arizona	10
Mississippi	6
South Carolina	6
Alabama	5
Florida	5
Texas	4
Georgia	3
Louisiana	3
Nevada	3
Arkansas	2



In Last 14 days
Avg New Confirmed Cases
(Avg New Deaths)
per 1M



Per 1M in Region

	Today	Change
Active Cases	2,111	+3%
Confirmed	171 new	+2%
Deaths	11 new	+5%
Recovered	90 new	+2%

Most Active Cases per 1M

Panama	5,511
Bolivia	3,668
Honduras	3,175
Peru	2,957
Brazil	2,743
Dom. Rep.	2,738
Ecuador	2,225
Colombia	2,176
Costa Rica	1,885
Argentina	1,826

* Excludes regions with population < 1M





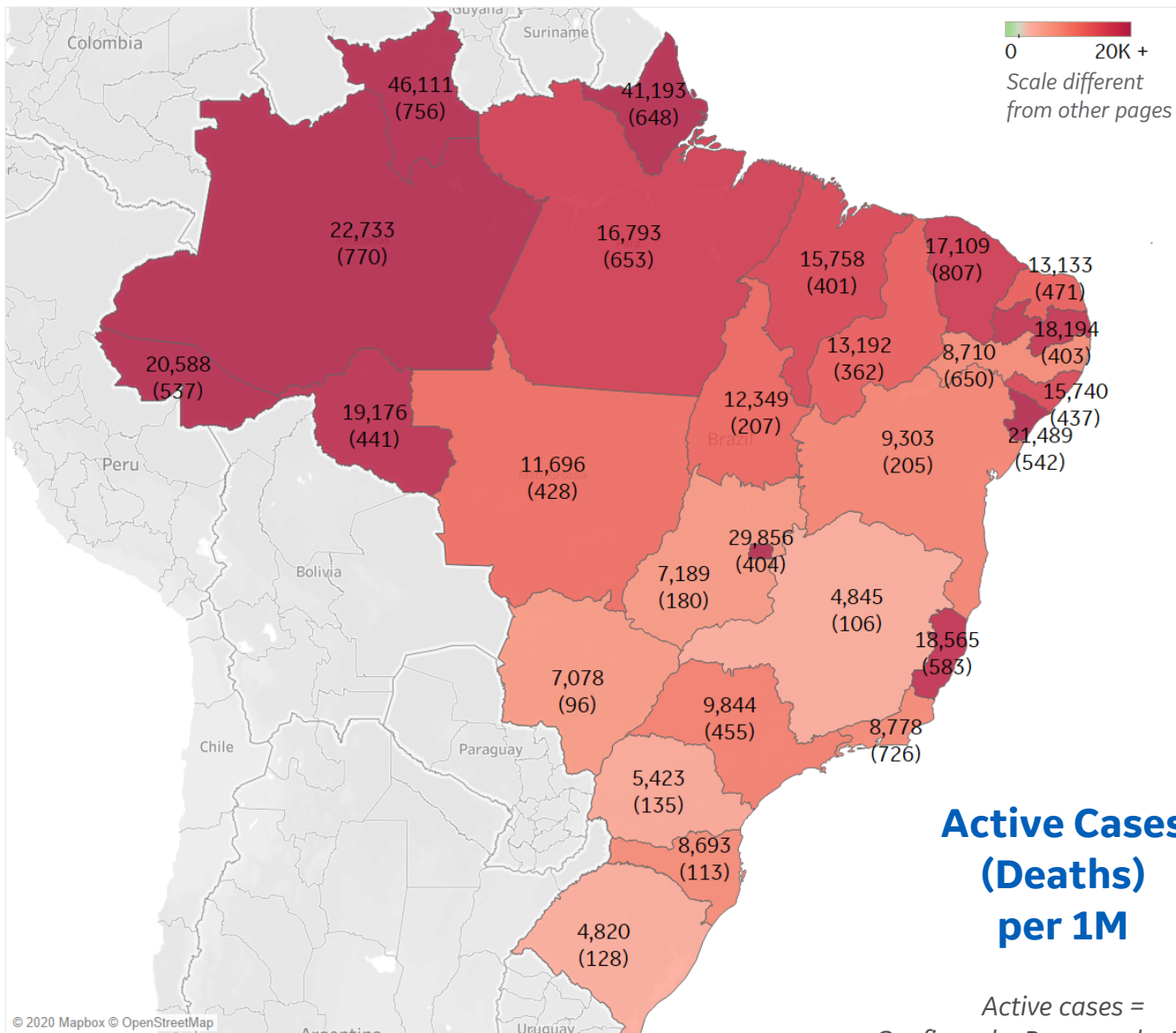
Per 1M in Region

	Today	Change
Active Cases	2,743	+5.5%
Confirmed	282 new	+3%
Deaths	6 new	+2%
Recovered	133 new	+2%

Most Active Cases per 1M

Distrito Federal	29,856
Amazonas	22,733
Sergipe	21,489
Rondônia	19,176
Espírito Santo	18,565
Paraíba	18,194
Ceará	17,109
Pará	16,793
Maranhão	15,758
Alagoas	15,740

* Excludes regions with population < 1M





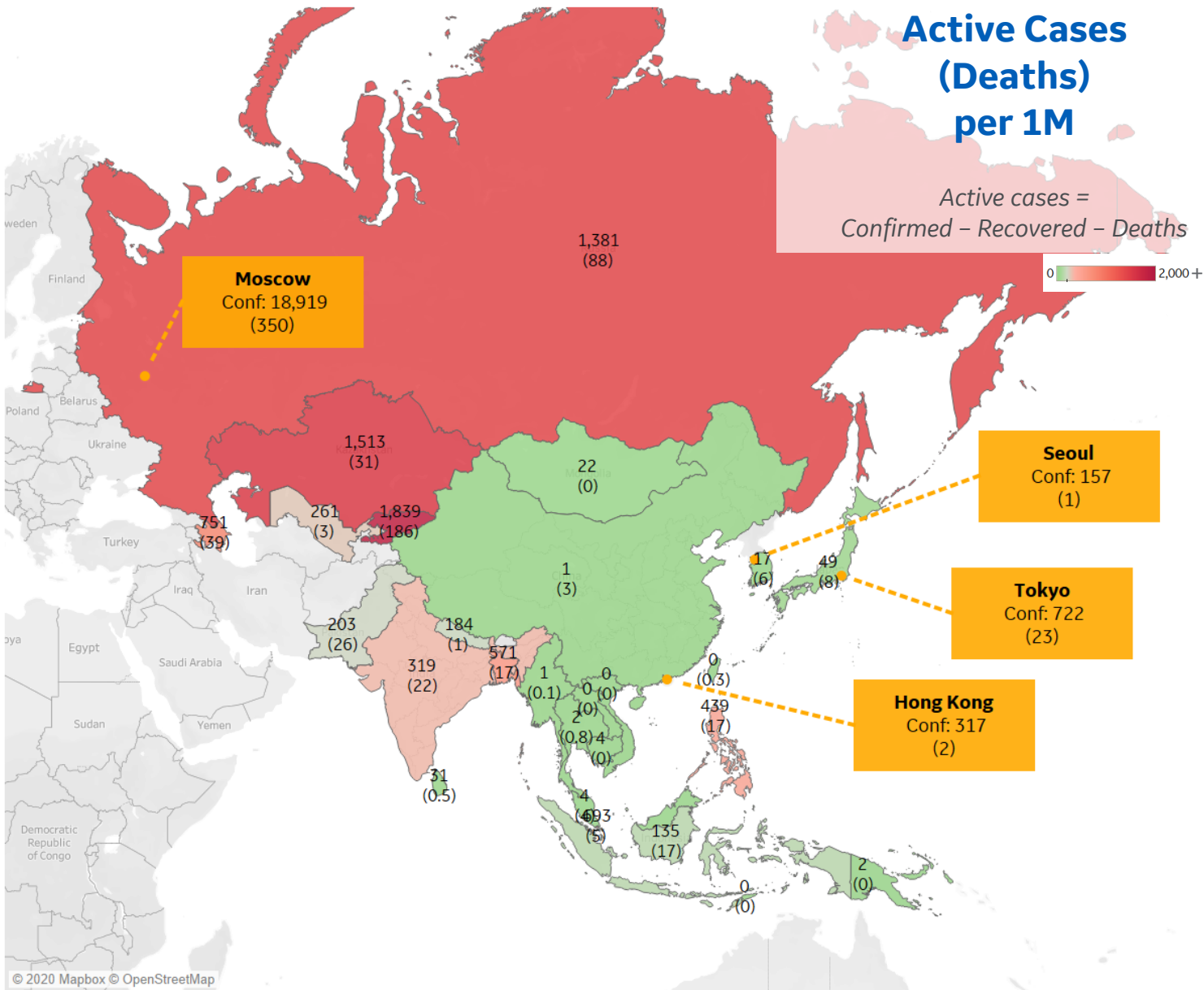
Per 1M in Region

	Today	Change
Active Cases	216	+1%
Confirmed	16 new	+2%
Deaths	0.3 new	+2%
Recovered	14 new	+3%

Most Active Cases per 1M

Kyrgyzstan	1,839
Kazakhstan	1,513
Russia	1,381
Azerbaijan	751
Singapore	693
Bangladesh	571
Philippines	439
India	319
Uzbekistan	261
Pakistan	203

* Excludes regions with population < 1M





Per 1M in Region

	Today	Change
Active Cases	151	+6%
Confirmed	9 new	+2%
Deaths	0.2 new	+4%
Recovered	0 new	+0%

Most Active Cases per 1M

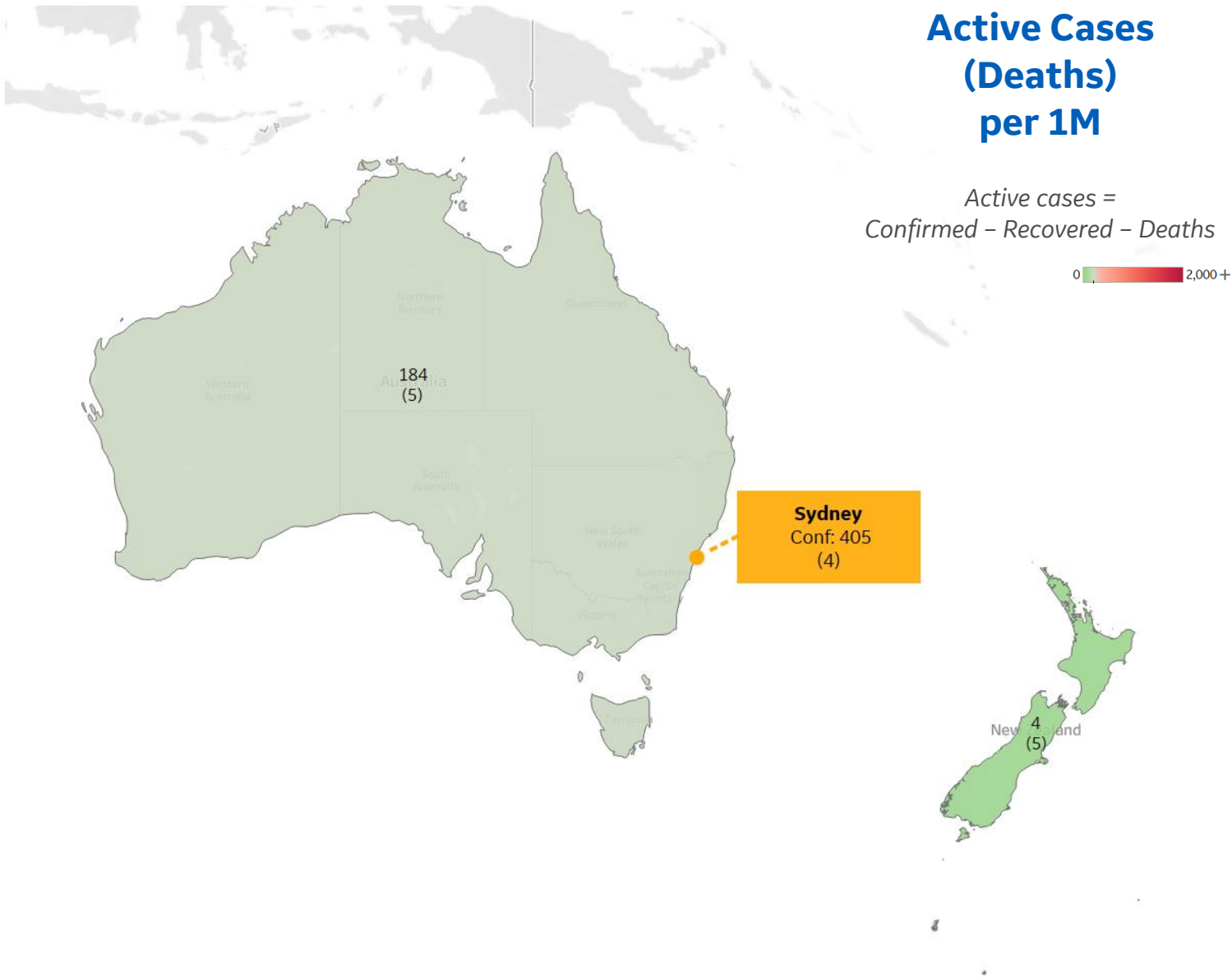
Australia	184
New Zealand	4

* Excludes regions with population < 1M

Active Cases (Deaths) per 1M

Active cases =
Confirmed - Recovered - Deaths

0 2,000 +





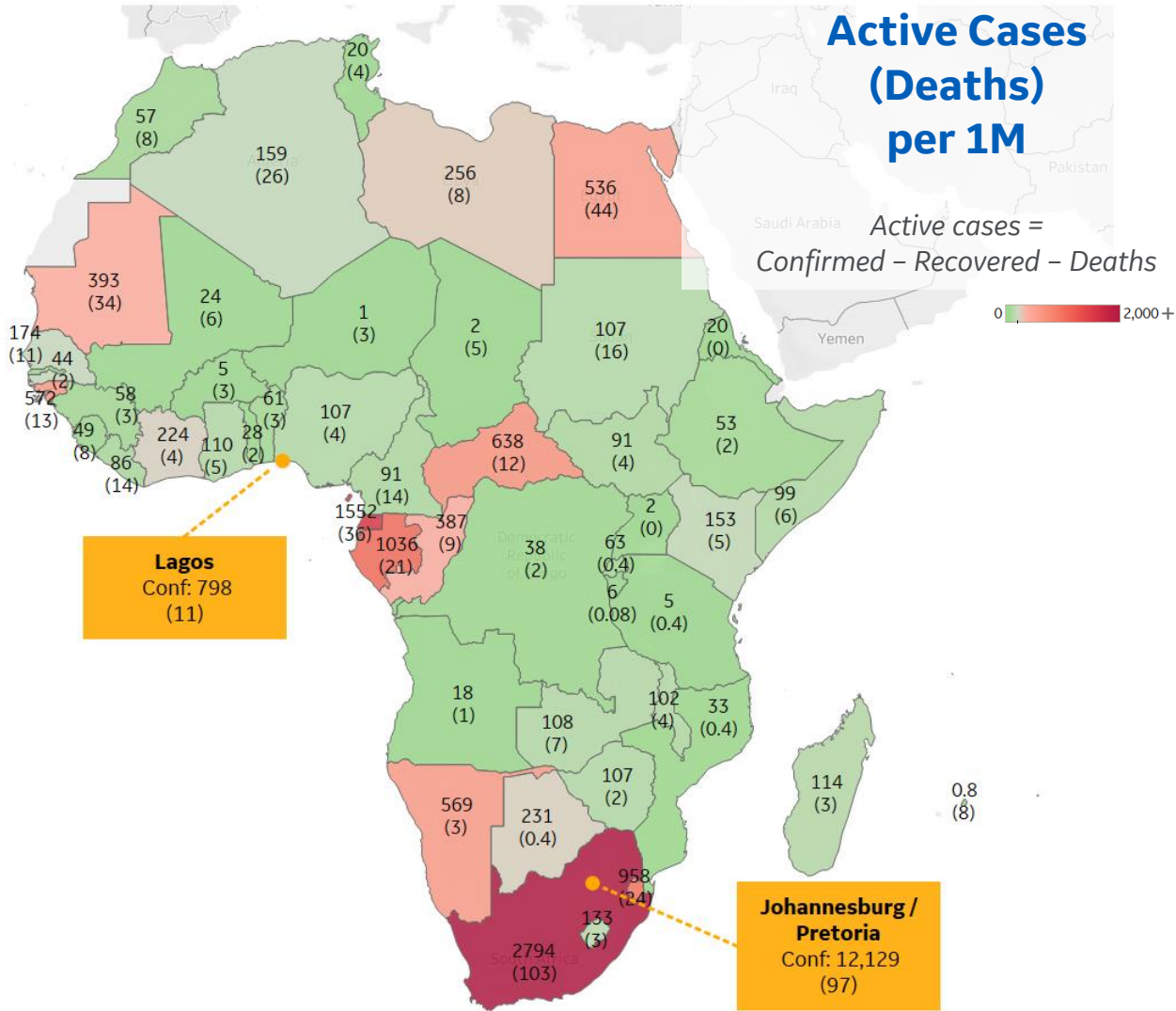
Per 1M in Region

	Today	Change
Active Cases	243	+2%
Confirmed	14 new	+2%
Deaths	0.2 new	+2%
Recovered	9 new	+3%

Most Active Cases per 1M

South Africa	2,794
Eq. Guinea	1,552
Gabon	1,036
Eswatini	958
Central African R..	638
Guinea-Bissau	572
Namibia	569
Egypt	536
Mauritania	393
Congo (Brazzavil..	387

* Excludes regions with population < 1M





** Per 1M = Per 1 Million Population unless otherwise noted

Johns Hopkins Coronavirus Resource Center:

<https://coronavirus.jhu.edu/map.html>

Worldometer Coronavirus Reporting:

<https://www.worldometers.info/coronavirus/>

Public Health England:

<https://www.gov.uk/government/publications/covid-19-track-coronavirus-cases>

US Department of Homeland Security, Homeland Infrastructure Foundation-Level Data:

<https://hifld-geoplatform.opendata.arcgis.com/datasets/hospitals>

City of New York, NYC Health:

<https://www1.nyc.gov/site/doh/covid/covid-19-data.page>

Chicago Coronavirus Latest Data:

<https://www.chicago.gov/city/en/sites/covid-19/home/latest-data.html>

National Health Commission of the PRC:

<http://www.nhc.gov.cn/xcs/yqtb/202003/bf66696029ba420098164607240074f8.shtml>

Korean Centers for Disease Control and Prevention:

http://www.cdc.go.kr/cdc_eng/

CDC, Severe Outcomes Among Patients with Coronavirus Disease 2019 (COVID-19):

<https://www.cdc.gov/mmwr/volumes/69/wr/mm6912e2.htm>

Italian Department of Civil Protection, COVID Monitoring:

<http://opendatadpc.maps.arcgis.com/apps/opsdashboard/index.html#/b0c68bce2cce478eaac82fe38d4138b1>

The COVID Tracking Project:

<https://covidtracking.com/data/>

UK Office for National Statistics

<https://www.ons.gov.uk/peoplepopulationandcommunity/birthsdeathsandmarriages/deaths/bulletins/deathsregisteredweeklyinenglandandwalesprovisional/weekending24april2020>

WHO Europe, Surveillance Report:

<http://www.euro.who.int/en/health-topics/health-emergencies/coronavirus-covid-19/weekly-surveillance-report>

WHO Europe, Principles for Transition:

<http://www.euro.who.int/en/media-centre/sections/statements/2020/statement-transition-to-a-new-normal-during-the-covid-19-pandemic-must-be-guided-by-public-health-principles>

COVID-19 Information for Switzerland:

<https://www.corona-data.ch/>

CIA World Factbook:

<https://www.cia.gov/library/publications/resources/the-world-factbook/>

Italian Ministry of Health:

<http://www.salute.gov.it/portale/nuovocoronavirus/dettaglioContenutiNuovoCoronavirus.jsp?lingua=italiano&id=5351&area=nuovoCoronavirus&menu=vuoto>

New South Wales Government:

<https://www.health.nsw.gov.au/Infectious/diseases/Pages/covid-19-latest.aspx>

Provincial Health Services Authority of Canada. BC Center for Disease Control:

<http://www.bccdc.ca/about/news-stories/stories/2020/information-on-novel-coronavirus>

Coronavirus Cases in Japan by Prefecture, Nippon Communications Foundation:

<https://www.nippon.com/en/japan-data/h00657/coronavirus-cases-in-japan-by-prefecture.html>

Secretary of Health, Mexico:

<https://www.gob.mx/salud/en>

OECD Economic Outlooks, Statistics:

https://www.oecd-ilibrary.org/economics/data/oecd-economic-outlook-statistics-and-projections_eo-data-en

Public Health Authority of Sweden:

<https://www.folkhalsomyndigheten.se/smittskydd-beredskap/utbrott/aktuella-utbrott/covid-19/bekraftade-fall-i-sverige>

National Public Health Agency of France:

<https://www.santepubliquefrance.fr/regions/ile-de-france/documents/bulletin-regional/2020/covid-19-point-epidemiologique-en-ile-de-france-du-23-avril-2020>

Florida Department of Health, COVID-19 Response:

<https://floridahealthcovid19.gov>

CDC:

<https://www.cdc.gov/covid-data-tracker/index.html#demographics>