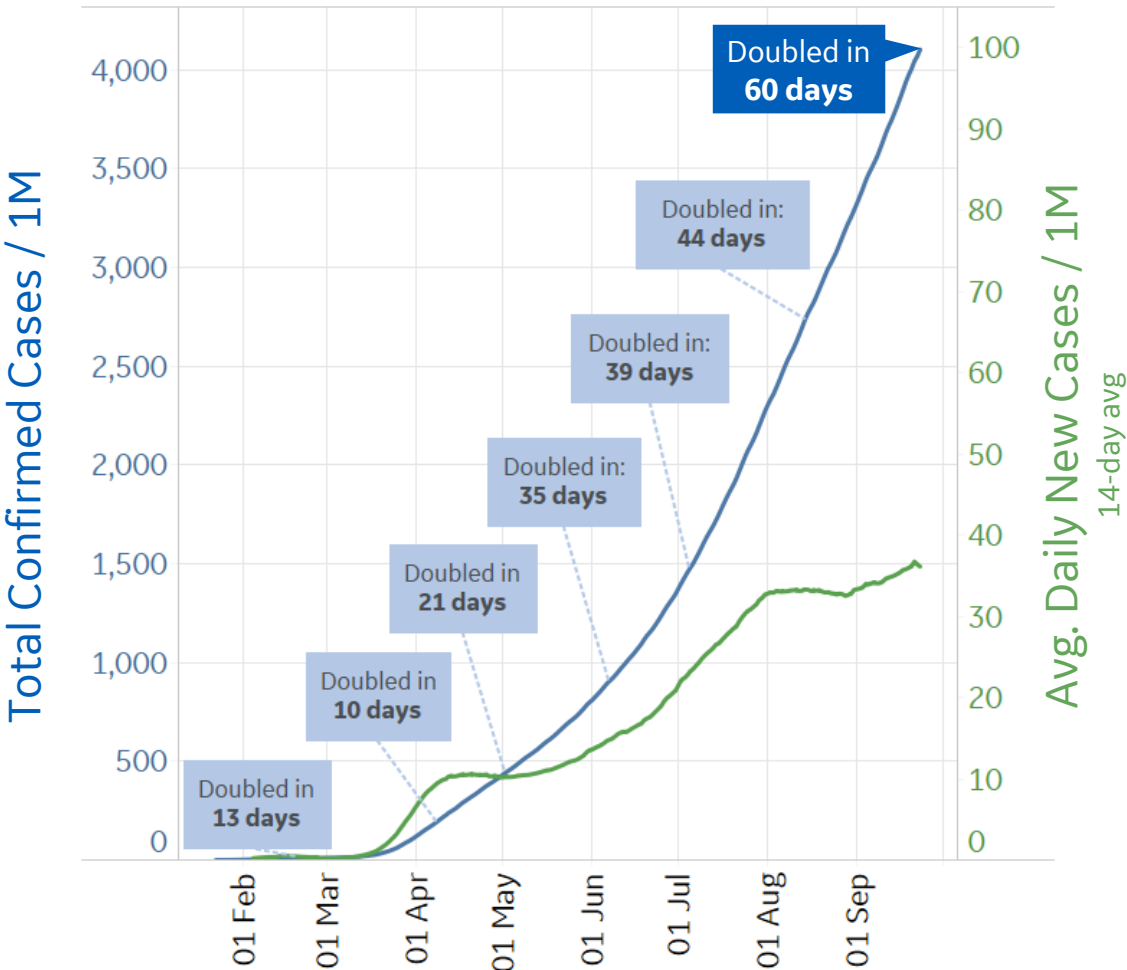


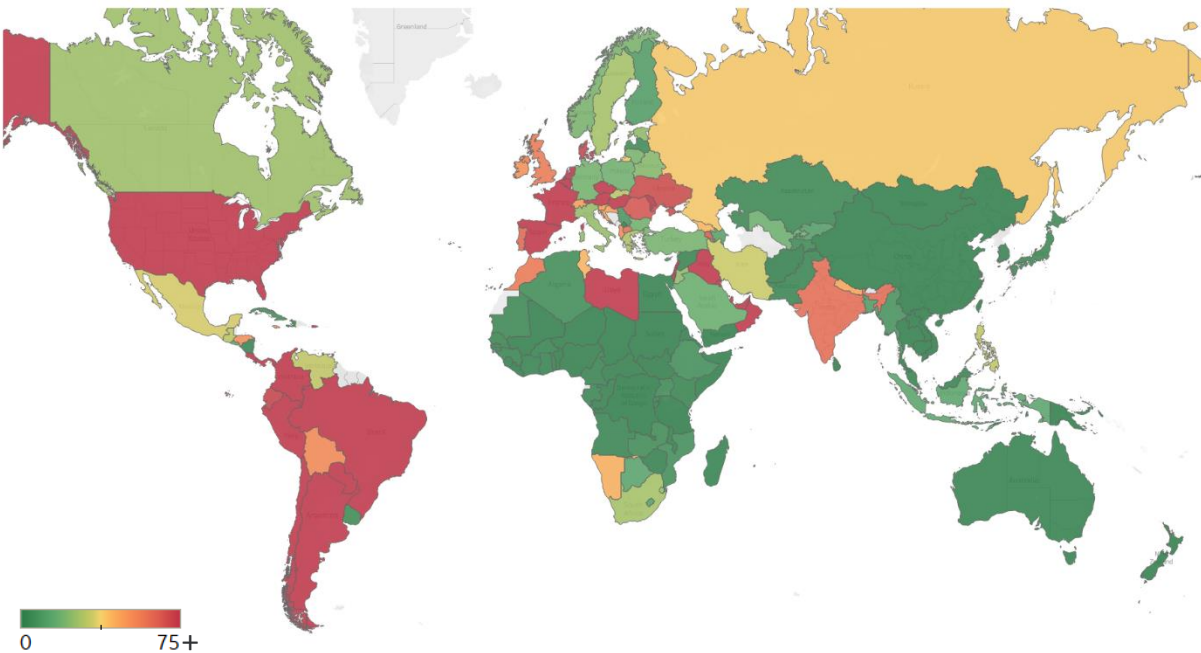


Global Confirmed & Active Cases

Trend since 22 Jan



Avg. Daily New Cases / 1M
Over the last 14 days



Per 1M:	Today	Change
Active Today	1,151	-0.1%
Active	-1 new	-0.1%
Confirmed	34 new	+1%
Deaths	1 new	+1.1%
Recovered	34 new	+1%



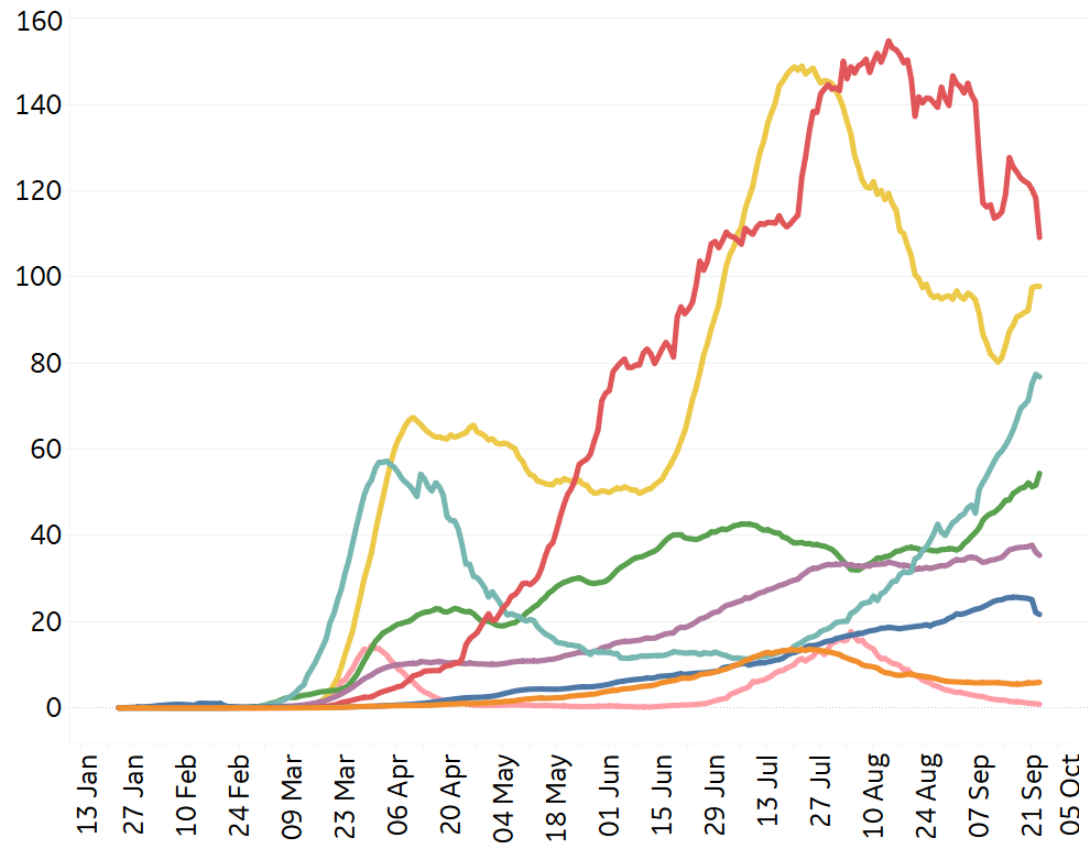
New Confirmed Cases & New Deaths

Updated 24 Sept 2020, 3:30 GMT 2

Key World North America Europe Middle East Cent & South America Asia Africa Oceania

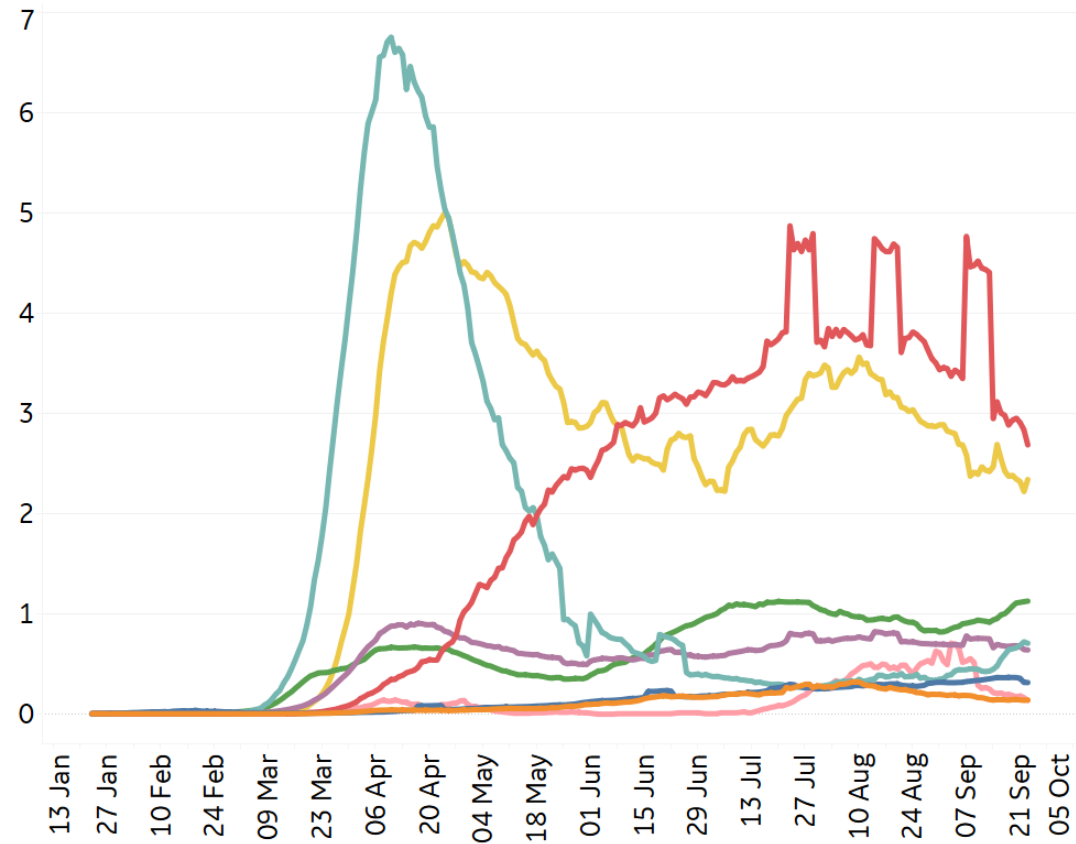
New Confirmed Cases / 1M

7-day rolling average



New Deaths / 1M

7-day rolling average





Top 50 Countries: Per 1M



1 - 25

	Today		Total Since 22 Jan			Change from 14d Ago [*] in 14 day avg of daily new	
	New Confirmed	New Deaths	Total Confirmed	Total Recovered	Total Deaths	Confirmed	Deaths
Peru	232	6	23,552	19,304	957	-10%	-32%
Belgium	143	0	9,223	1,646	859	158%	11%
Spain	241	3	14,834	3,216	664	22%	114%
Bolivia	46	3	11,307	7,843	662	-23%	-76%
Brazil	0	0	21,600	19,039	650	-18%	-12%
Chile	72	1	23,535	22,241	646	-7%	-10%
Ecuador	127	3	7,362	5,830	633	996%	-89%
UK	91	1	6,073	N/A**	618	105%	105%
US	113	3	20,947	8,067	610	5%	-1%
Italy	27	0	5,004	3,650	591	10%	52%
Sweden	32	1	8,887	N/A**	582	89%	31%
Mexico	37	5	5,507	4,666	581	-15%	-15%
Panama	164	1	25,028	19,569	531	-10%	-5%
Colombia	132	7	15,413	13,016	486	-15%	-30%
France	20	0	7,790	1,478	482	36%	151%
Netherlands	144	0	6,146	183	370	126%	58%
Ireland	47	0	6,820	4,732	363	95%	225%
North Macedo..	87	2	8,183	6,809	341	27%	36%
EU	68	1	5,888	2,483	327	41%	65%
Argentina	279	9	14,709	11,627	318	7%	32%
Armenia	71	1	16,157	14,520	318	31%	-16%
Moldova	195	3	11,956	8,942	308	15%	15%
Iran	43	2	5,153	4,356	296	42%	32%
South Africa	32	1	11,216	10,019	273	-15%	-38%
Kosovo	0	0	6,873	4,762	264	N/A	N/A

26 - 50

	Today		Total Since 22 Jan			Change from 14d Ago [*] in 14 day avg of daily new	
	New Confirmed	New Deaths	Total Confirmed	Total Recovered	Total Deaths	Confirmed	Deaths
Bos. and Herz.	105	4	7,950	5,680	241	5%	11%
Switzerland	50	1	5,904	4,864	238	24%	156%
Romania	92	2	6,051	4,863	237	9%	-11%
Honduras	37	2	7,337	2,425	224	-21%	-40%
Iraq	126	2	8,270	6,588	218	1%	-4%
Dom. Rep.	43	1	10,116	7,691	191	5%	-47%
Portugal	79	0	6,911	4,540	189	69%	88%
Guatemala	46	1	4,881	4,268	176	-12%	9%
Oman	123	2	18,670	16,935	171	137%	18%
Kyrgyzstan	13	0	6,994	6,423	163	-19%	-50%
Costa Rica	269	4	13,360	5,131	153	13%	52%
Israel	1,307	5	23,648	16,748	153	95%	51%
Kuwait	144	0	23,720	21,623	138	-6%	23%
Bahrain	360	2	39,384	35,330	136	36%	65%
Russia	43	1	7,657	6,308	135	16%	14%
Saudi Arabia	16	1	9,518	9,013	131	-31%	-1%
Paraguay	104	3	4,987	2,785	102	4%	11%
Kazakhstan	4	0	5,727	5,449	90	-30%	-41%
Belarus	27	1	8,081	7,785	84	22%	1%
Qatar	90	0	43,101	42,001	74	7%	-36%
West Bank an..	110	1	8,116	5,753	60	18%	45%
Czechia	215	2	5,179	2,494	52	202%	327%
UAE	110	0	8,850	7,785	41	45%	-13%
Singapore	2	0	9,852	9,793	5	-30%	N/A
Total World	34	1	4,103	2,826	126	6%	-8%

*Change from 14d ago:
Compares 14d-avgs. of Daily New Cases/Deaths
today with 14d-avgs. from 14d ago

Israel reports over 1,000 new confirmed cases / 1M today

Sorted by Total Deaths / 1M
Top 50 countries selected by Cases / 1M
Excluded countries with population < 1M

N/A** due to inconsistent reporting of Recovered Cases



Top 50 Countries: Raw Volume

Updated 24 Sept 2020, 3:30 GMT

4

1 - 25

	Today		Total Since 22 Jan			Change from 14d Ago [*] in 14 day avg of daily new	
	New Confirmed	New Deaths	Total Confirmed	Total Recovered	Total Deaths	Confirmed	Deaths
US	37,330	1,098	6,933,548	2,670,256	201,884	5%	-1%
EU	30,145	350	2,621,766	1,105,551	145,412	41%	65%
Brazil	0	0	4,591,364	4,046,827	138,105	-18%	-12%
India	83,347	1,085	5,646,010	4,587,613	90,020	2%	3%
Mexico	4,786	601	710,049	601,611	74,949	-15%	-15%
UK	6,187	37	412,245	N/A**	41,951	105%	105%
Italy	1,640	20	302,537	220,665	35,758	10%	52%
Peru	7,651	199	776,546	636,489	31,568	-10%	-32%
France	1,306	21	508,456	96,498	31,447	36%	151%
Spain	11,289	130	693,556	150,376	31,034	22%	114%
Iran	3,605	184	432,798	365,846	24,840	42%	32%
Colombia	6,731	349	784,268	662,277	24,746	-15%	-30%
Russia	6,330	145	1,117,487	920,602	19,720	16%	14%
South Africa	1,906	88	665,188	594,229	16,206	-15%	-38%
Argentina	12,625	424	664,799	525,486	14,376	7%	32%
Chile	1,380	24	449,903	425,165	12,345	-7%	-10%
Ecuador	2,249	45	129,892	102,852	11,171	996%	-89%
Indonesia	4,465	140	257,388	187,958	9,977	25%	18%
Belgium	1,661	4	106,887	19,079	9,959	158%	11%
Germany	1,613	18	279,025	245,706	9,423	30%	42%
Canada	1,084	8	149,939	129,850	9,294	78%	43%
Iraq	5,055	72	332,635	264,988	8,754	1%	-4%
Bolivia	537	38	131,990	91,556	7,731	-23%	-76%
Turkey	1,767	72	308,069	270,723	7,711	3%	34%
Pakistan	799	5	308,217	294,392	6,437	40%	-27%

26 - 50

	Today		Total Since 22 Jan			Change from 14d Ago [*] in 14 day avg of daily new	
	New Confirmed	New Deaths	Total Confirmed	Total Recovered	Total Deaths	Confirmed	Deaths
Netherlands	2,460	6	105,304	3,143	6,344	126%	58%
Sweden	320	6	89,756	N/A**	5,876	89%	31%
Egypt	121	16	102,375	91,843	5,822	-24%	-6%
Philippines	2,802	42	294,591	231,373	5,091	16%	30%
Bangladesh	1,666	37	353,844	262,953	5,044	-21%	-12%
China	10	1	90,409	85,304	4,738	-2%	-75%
Saudi Arabia	561	27	331,359	313,786	4,569	-31%	-1%
Romania	1,767	47	116,415	93,558	4,550	9%	-11%
Ukraine	3,598	68	189,488	84,767	3,784	27%	18%
Guatemala	819	17	87,442	76,459	3,154	-12%	9%
Poland	974	28	81,673	65,561	2,344	19%	29%
Panama	706	6	107,990	84,437	2,291	-10%	-5%
Honduras	369	16	72,675	24,022	2,222	-21%	-40%
Dom. Rep.	468	10	109,737	83,434	2,074	5%	-47%
Morocco	2,397	29	107,743	88,244	1,918	36%	-1%
Kazakhstan	79	0	107,529	102,323	1,699	-30%	-41%
Japan	236	6	80,009	71,547	1,525	-21%	-38%
Israel	11,316	40	204,690	144,963	1,325	95%	51%
Ethiopia	661	14	71,083	29,253	1,141	-43%	-27%
Oman	628	10	95,339	86,482	875	137%	18%
Belarus	253	5	76,357	73,564	796	22%	1%
Kuwait	616	2	101,299	92,341	590	-6%	23%
UAE	1,083	1	87,530	76,995	406	45%	-13%
Qatar	258	1	124,175	121,006	212	7%	-36%
Total World	262,748	5,563	31,779,835	21,890,442	975,104	6%	-8%

^{*}Change from 14d ago:
Compares 14d-avgs. of Daily New Cases/Deaths
today with 14d-avgs. from 14d ago

Today **India** surpassed 90,000 total reported deaths

Sorted by Raw Total Deaths
Top 50countries selected by Total Cases
Excluded countries with population < 1M

N/A** due to inconsistent reporting of Recovered Cases



United States: Per 1M



1 - 25

	Today		Total Since 22 Jan			Change from 14d Ago* in 14 day avg of daily new	
	New Confirmed	New Deaths	Total Confirmed	Total Recovered	Total Deaths	Confirmed	Deaths
New Jersey	46	1	22,628	3,910	1,811	28%	-21%
New York	34	0	23,229	3,922	1,701	9%	-28%
Massachusetts	79	3	18,645	15,872	1,356	249%	26%
Connecticut	43	0	15,795	2,582	1,261	48%	109%
Louisiana	93	4	34,986	32,189	1,163	-23%	-8%
Rhode Island	126	3	22,822	2,148	1,040	23%	90%
Mississippi	185	8	31,777	28,670	964	-12%	-1%
DC	41	0	21,325	16,903	880	-6%	-40%
Arizona	60	4	29,577	4,702	759	23%	-23%
Michigan	90	2	13,143	9,033	702	10%	-35%
Illinois	146	2	22,199	N/A	690	-10%	15%
Delaware	71	1	20,364	10,724	646	15%	300%
Maryland	64	1	20,063	1,223	645	-5%	-13%
Georgia	176	9	29,212	N/A	638	-14%	-22%
Florida	121	9	32,150	N/A	634	-12%	10%
S. Carolina	174	4	27,519	13,108	634	28%	-13%
Pennsylvania	67	3	12,290	9,652	628	5%	35%
Texas	43	5	25,621	21,315	530	33%	-19%
Indiana	106	1	16,835	13,379	524	-2%	-4%
Alabama	116	6	30,012	13,172	507	-16%	-15%
Nevada	165	3	24,936	668	505	-19%	-11%
Iowa	397	2	26,266	19,128	411	-12%	-29%
New Mexico	94	1	13,347	7,433	409	12%	-24%
Arkansas	325	7	25,834	23,180	407	38%	54%
Ohio	77	4	12,555	10,781	401	-10%	30%
California	85	3	20,157	N/A	387	-18%	-10%

26 - 51

	Today		Total Since 22 Jan			Change from 14d Ago* in 14 day avg of daily new	
	New Confirmed	New Deaths	Total Confirmed	Total Recovered	Total Deaths	Confirmed	Deaths
California	85	3	20,157	N/A	387	-18%	-10%
Virginia	67	3	16,690	1,996	362	-4%	114%
Minnesota	120	1	16,331	14,807	361	-4%	43%
Colorado	107	1	11,574	1,100	353	72%	6%
Tennessee	242	2	27,353	24,842	333	5%	22%
New Hampshire	13	0	5,889	5,371	322	52%	25%
N. Carolina	91	3	18,736	16,821	316	-17%	2%
Missouri	260	12	19,260	N/A	316	10%	7%
Washington	67	1	10,992	N/A	273	-3%	5%
North Dakota	621	9	24,907	20,308	266	34%	142%
Idaho	222	2	21,680	11,569	254	-26%	-59%
Kentucky	175	1	14,217	2,570	252	9%	0%
Oklahoma	275	2	20,258	16,876	245	28%	7%
Nebraska	255	1	21,856	16,135	239	28%	17%
South Dakota	503	0	22,194	18,452	228	2%	164%
Wisconsin	303	1	18,194	15,353	216	104%	-8%
Kansas	290	2	18,826	689	213	-2%	112%
West Virginia	68	1	8,099	5,982	180	19%	3%
Montana	198	2	10,210	7,962	154	45%	79%
Utah	274	0	20,562	16,331	138	86%	-35%
Oregon	45	1	7,469	1,298	128	5%	-28%
Maine	18	0	3,846	3,307	104	41%	200%
Vermont	2	0	2,760	2,508	93	-16%	N/A
Wyoming	264	2	8,931	7,390	86	115%	60%
Hawaii	118	1	8,256	3,526	86	-45%	-23%
Alaska	93	0	9,574	3,733	62	12%	-40%

*Change from 14d ago:
Compares 14d-avgs. of Daily New Cases/Deaths
today with 14d-avgs. from 14d ago

Since 1 Sept, cumulative confirmed cases in **Georgia** increased 14%

Sorted by Total Deaths / 1M

N/As due to states revising and updating case counts



United States: Raw Volume

Updated 24 Sept 2020, 3:30 GMT

6

1 - 25

	Today		Total Since 22 Jan			Change from 14d Ago* in 14 day avg of daily new	
	New Confirmed	New Deaths	Total Confirmed	Total Recovered	Total Deaths	Confirmed	Deaths
New York	665	0	451,892	76,306	33,090	9%	-28%
New Jersey	408	6	200,988	34,729	16,082	28%	-21%
Texas	1,250	143	742,913	618,054	15,372	33%	-19%
California	3,371	102	796,436	N/A	15,291	-18%	-10%
Florida	2,590	202	690,499	N/A	13,618	-12%	10%
Massachusetts	543	19	128,512	109,397	9,347	249%	26%
Illinois	1,850	22	281,303	N/A	8,744	-10%	15%
Pennsylvania	859	36	157,336	123,560	8,038	5%	35%
Michigan	902	16	131,259	90,216	7,013	10%	-35%
Georgia	1,867	96	310,161	N/A	6,769	-14%	-22%
Arizona	438	27	215,284	34,227	5,525	23%	-23%
Louisiana	431	19	162,645	149,640	5,407	-23%	-8%
Ohio	903	52	146,753	126,023	4,687	-10%	30%
Connecticut	155	1	56,315	9,204	4,497	48%	109%
Maryland	385	7	121,297	7,396	3,902	-5%	-13%
Indiana	711	10	113,337	90,069	3,530	-2%	-4%
N. Carolina	952	30	196,500	176,422	3,316	-17%	2%
S. Carolina	897	19	141,686	67,491	3,262	28%	-13%
Virginia	575	29	142,459	17,038	3,087	-4%	114%
Mississippi	552	24	94,573	85,327	2,870	-12%	-1%
Alabama	569	31	147,153	64,583	2,488	-16%	-15%
Tennessee	1,650	16	186,798	169,649	2,277	5%	22%
Washington	509	11	83,702	N/A	2,081	-3%	5%
Minnesota	678	6	92,100	83,507	2,037	-4%	43%
Colorado	616	5	66,649	6,332	2,030	72%	6%

26 - 51

	Today		Total Since 22 Jan			Change from 14d Ago* in 14 day avg of daily new	
	New Confirmed	New Deaths	Total Confirmed	Total Recovered	Total Deaths	Confirmed	Deaths
Missouri	1,593	71	118,205	N/A	1,938	10%	7%
Nevada	509	10	76,807	2,059	1,556	-19%	-11%
Iowa	1,253	5	82,871	60,350	1,298	-12%	-29%
Wisconsin	1,762	8	105,932	89,393	1,259	104%	-8%
Arkansas	982	20	77,963	69,952	1,229	38%	54%
Kentucky	784	5	63,515	11,480	1,124	9%	0%
Rhode Island	133	3	24,177	2,275	1,102	23%	90%
Oklahoma	1,089	8	80,161	66,779	970	28%	7%
New Mexico	197	3	27,987	15,586	857	12%	-24%
Delaware	69	1	19,830	10,443	629	15%	300%
DC	29	0	15,050	11,929	621	-6%	-40%
Kansas	846	6	54,846	2,008	620	-2%	112%
Oregon	190	6	31,503	5,475	538	5%	-28%
Nebraska	493	1	42,278	31,212	462	28%	17%
Idaho	396	3	38,743	20,674	454	-26%	-59%
Utah	877	1	65,921	52,357	444	86%	-35%
New Hampshire	17	0	8,007	7,303	438	52%	25%
West Virginia	121	2	14,515	10,721	322	19%	3%
North Dakota	473	7	18,981	15,476	203	34%	142%
South Dakota	445	0	19,634	16,324	202	2%	164%
Montana	212	2	10,912	8,510	165	45%	79%
Maine	24	0	5,170	4,445	140	41%	200%
Hawaii	167	2	11,689	4,992	122	-45%	-23%
Vermont	1	0	1,722	1,565	58	-16%	N/A
Wyoming	153	1	5,169	4,277	50	115%	60%
Alaska	68	0	7,004	2,731	45	12%	-40%

*Change from 14d ago:
Compares 14d-avgs. of Daily New Cases/Deaths
today with 14d-avgs. from 14d ago

California has reported over 100K more cumulative confirmed cases than **Spain**

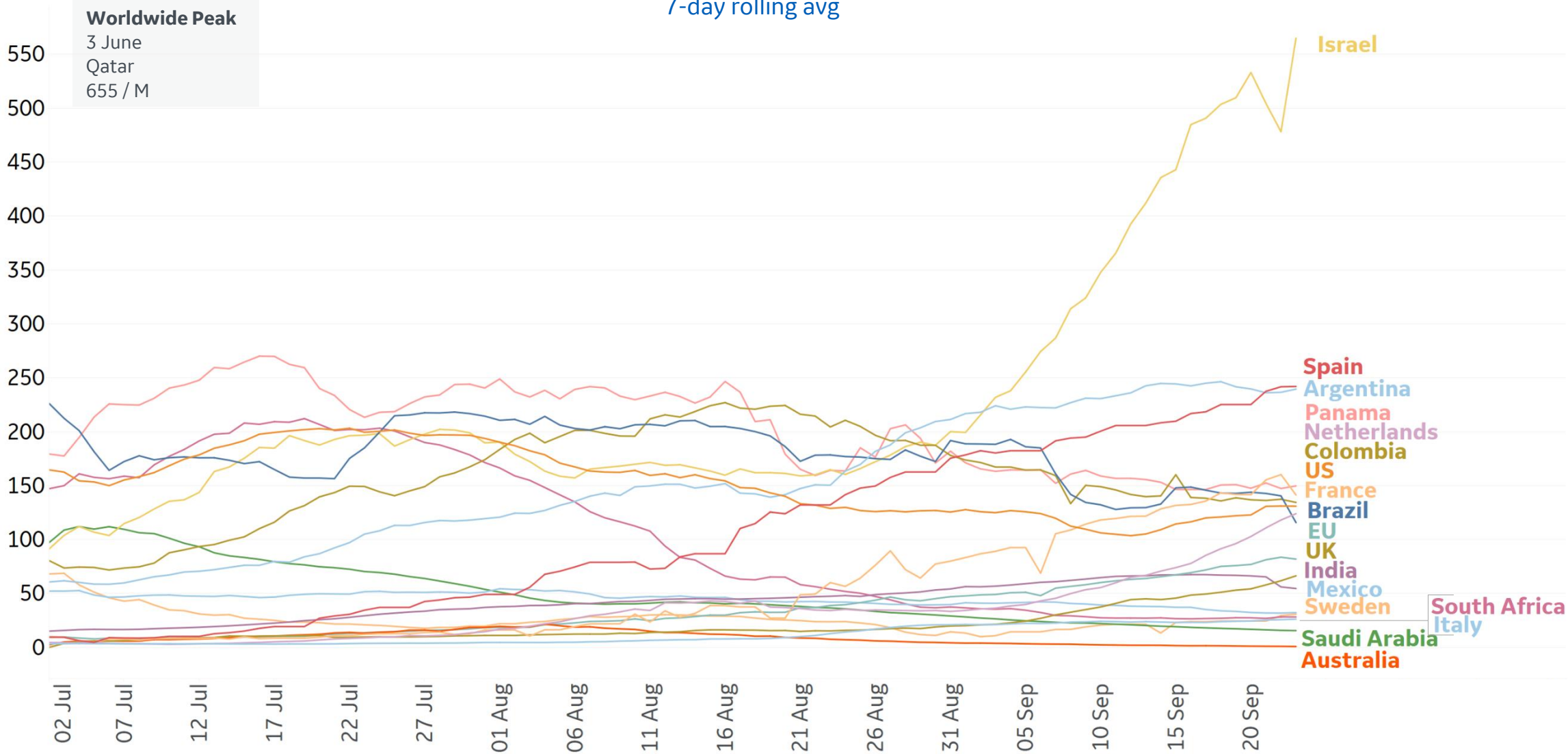
Sorted by Raw Total Deaths

N/As due to states revising and updating case counts



New Confirmed Cases in Select Countries

Daily New Confirmed Cases / 1M
7-day rolling avg

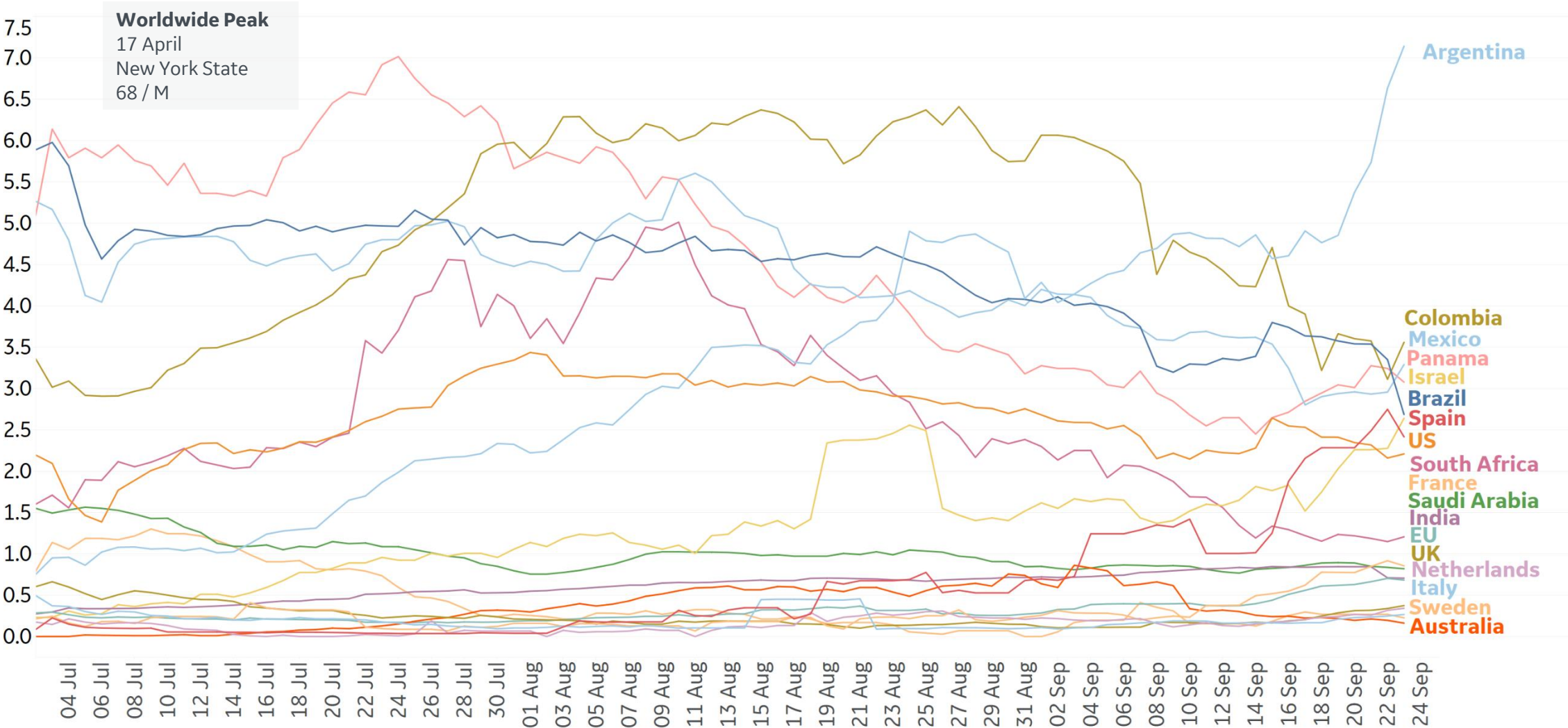




New Deaths in Select Countries

Updated 24 Sept 2020, 3:30 GMT

Daily New Deaths / 1M
7-day rolling avg



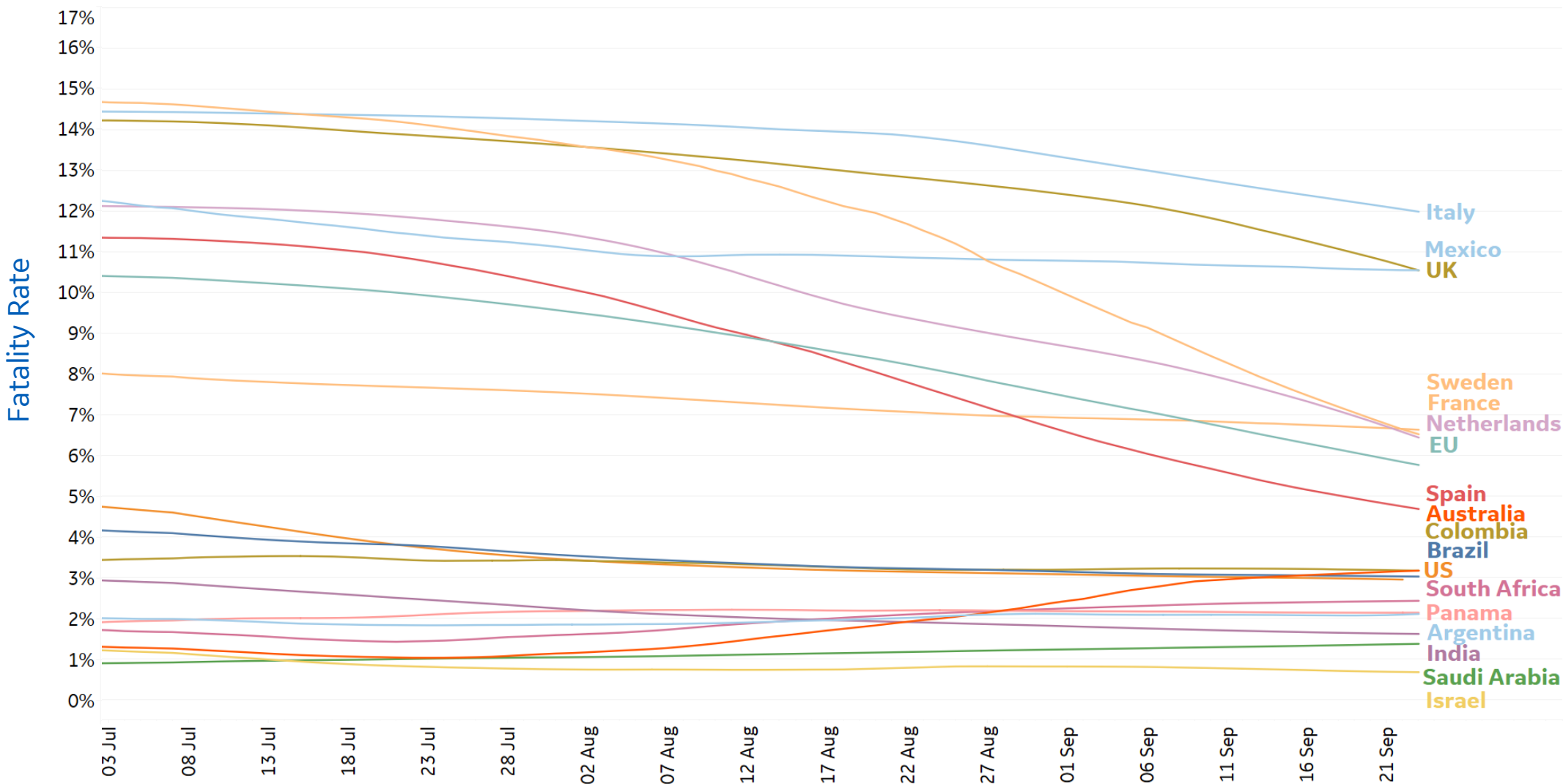


The chart displays the daily number of new COVID-19 cases for 18 countries and regions. The y-axis represents the number of cases, ranging from 0 to 650. The x-axis shows dates from July 3 to September 23, 2020. The countries are color-coded and listed on the right side of the chart.

Country/Region	Approximate Case Count (as of Sep 23, 2020)
Spain	660
Brazil	650
UK	610
US	610
Italy	590
Sweden	580
Mexico	580
Panama	530
Colombia	480
France	470
Netherlands	360
EU	320
Argentina	320
South Africa	270
Israel	150
Saudi Arabia	130
India	60
Australia	30



7-day rolling avg

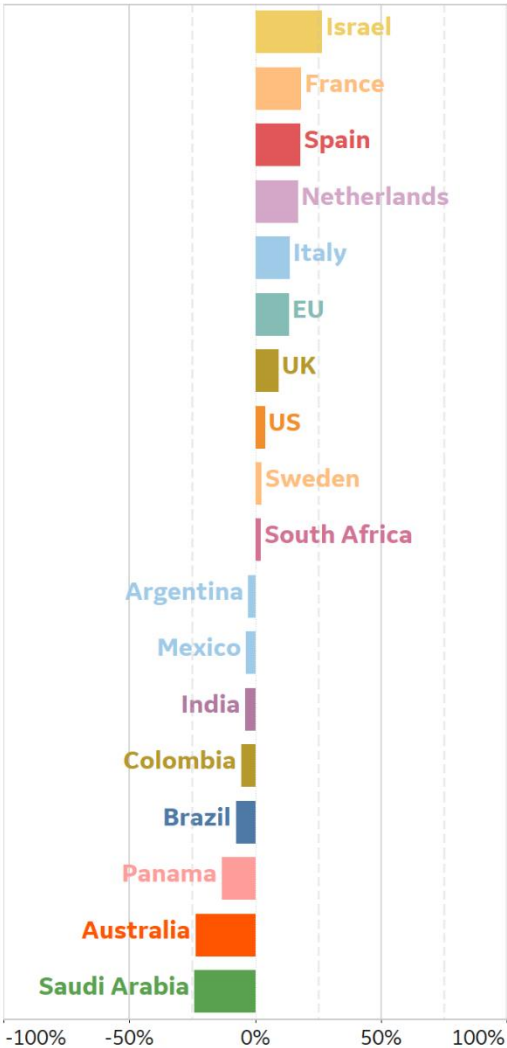




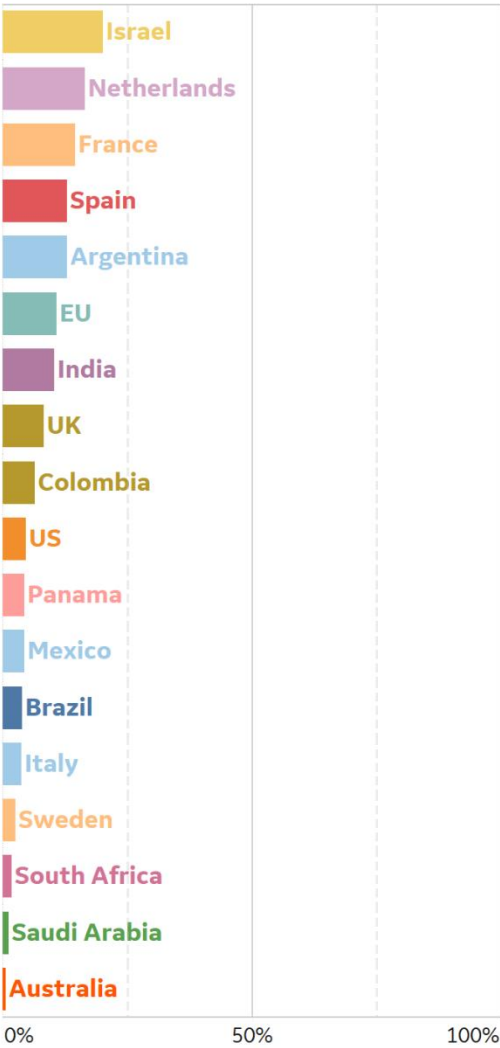
% Change in Case Volume in Select Countries

Over Previous 7 days

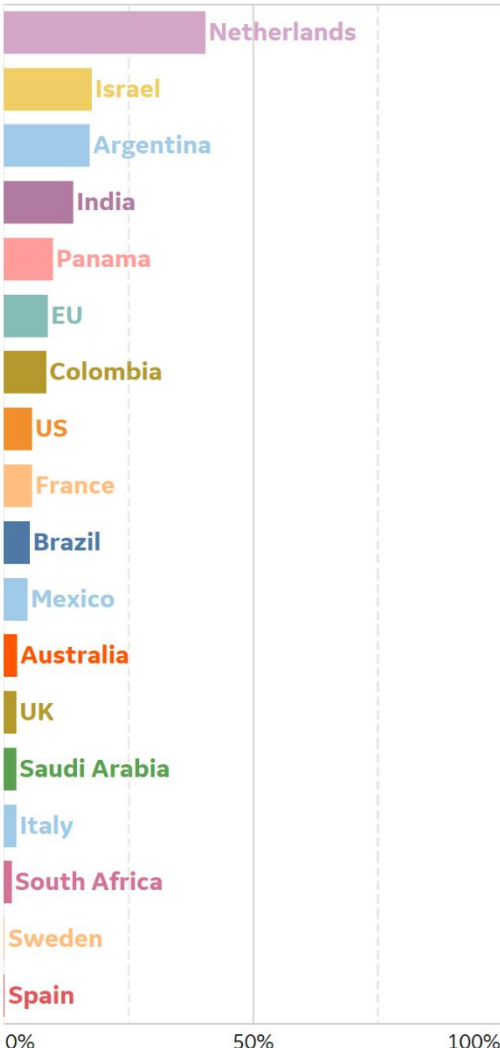
Active Cases



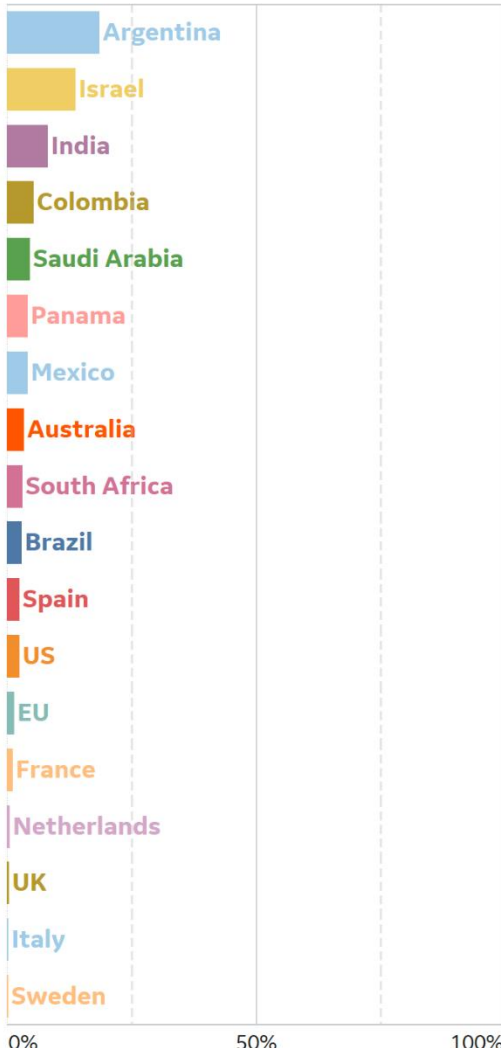
Confirmed Cases



Reported Recoveries



Reported Deaths

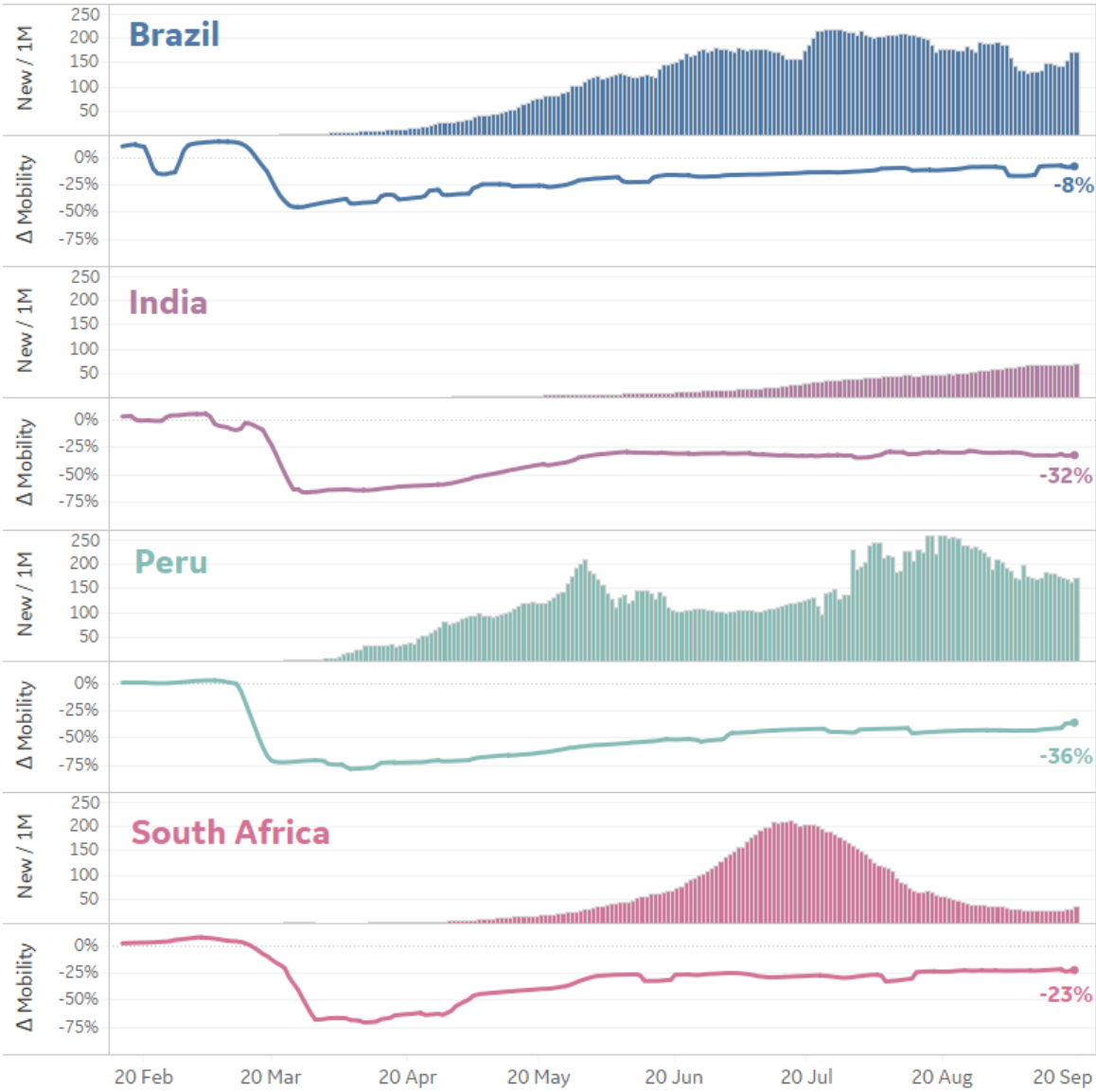
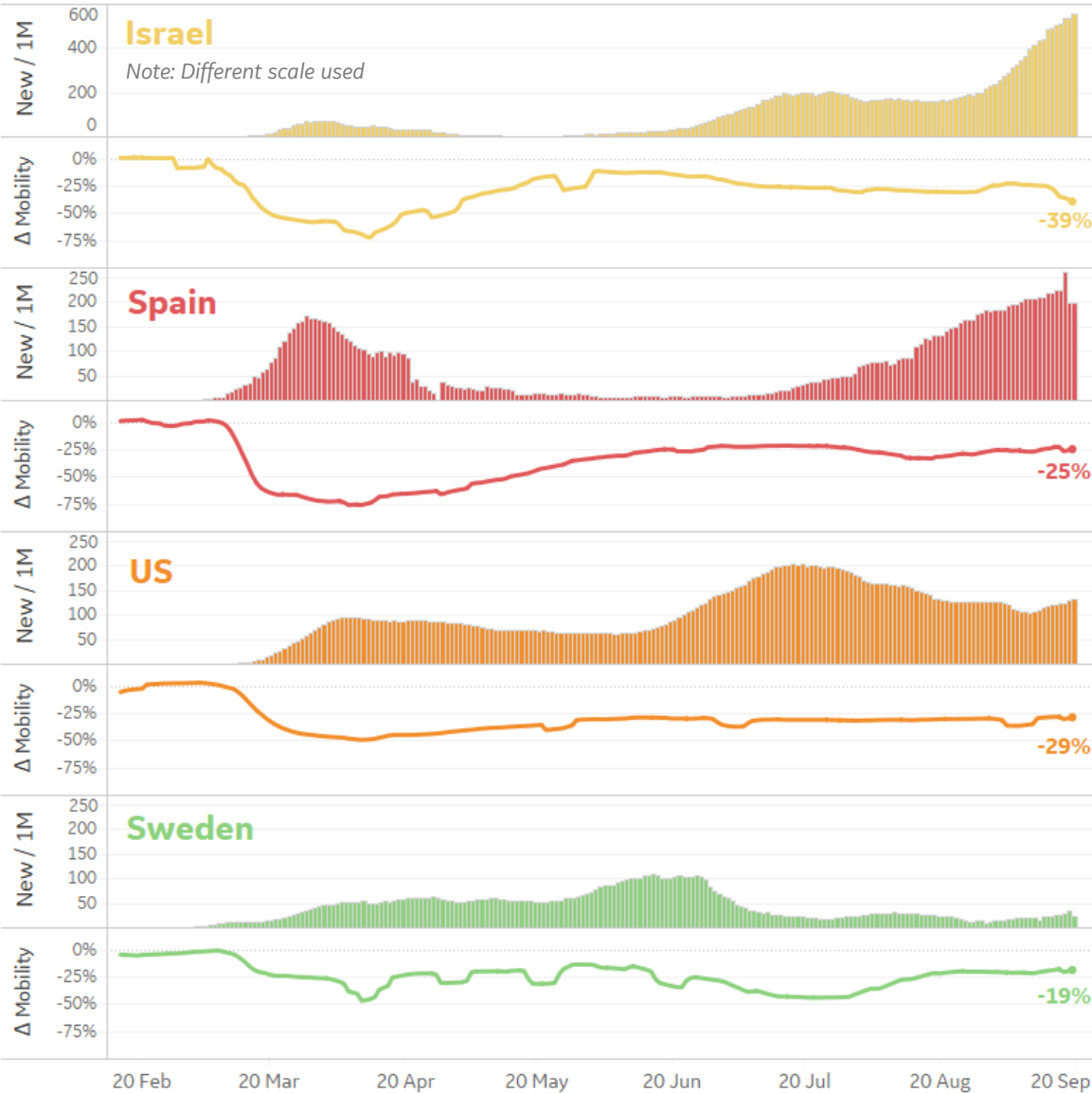




Feature: Mobility in Select Countries

Updated 24 Sept 2020, 3:30 GMT 12

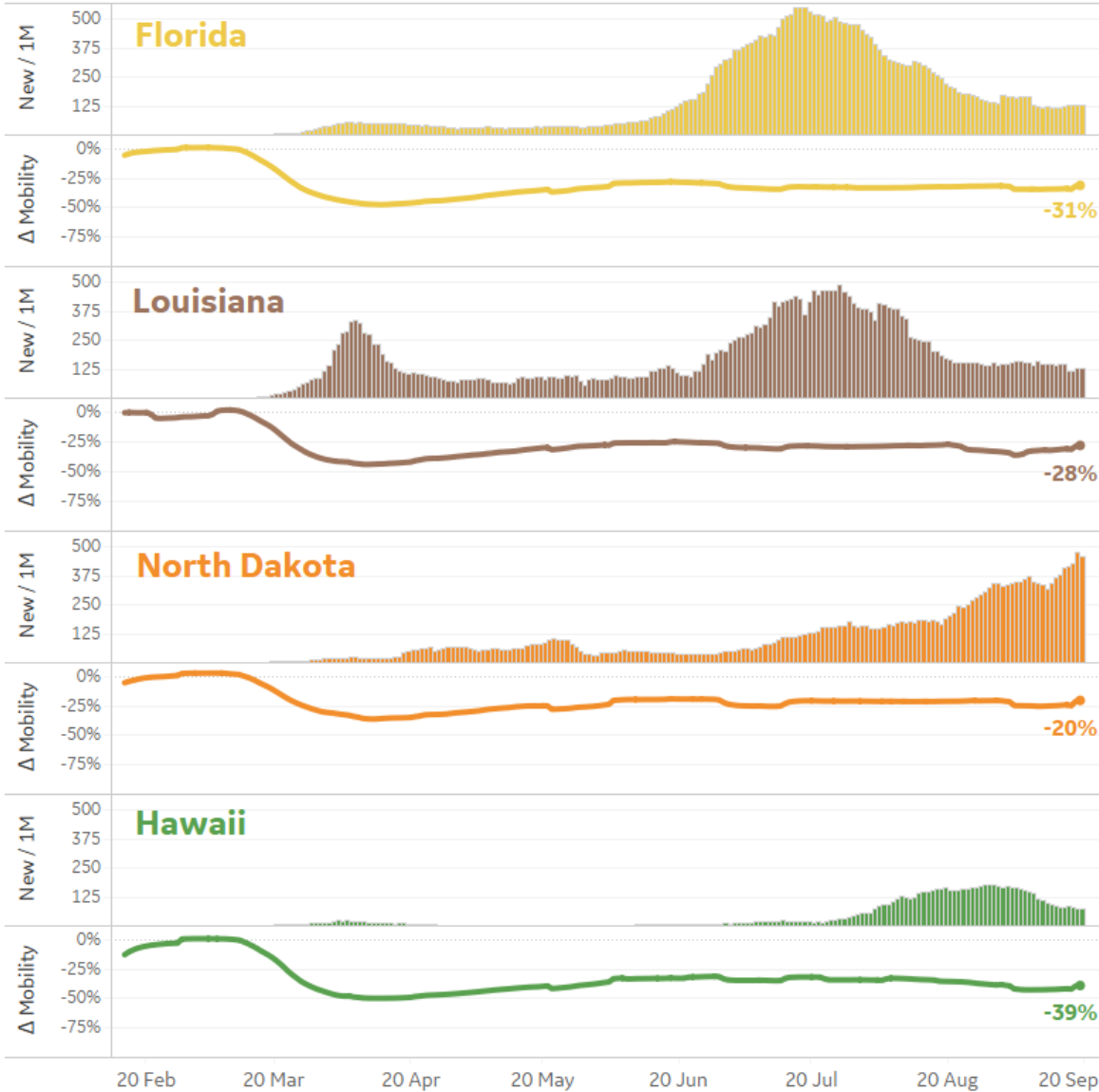
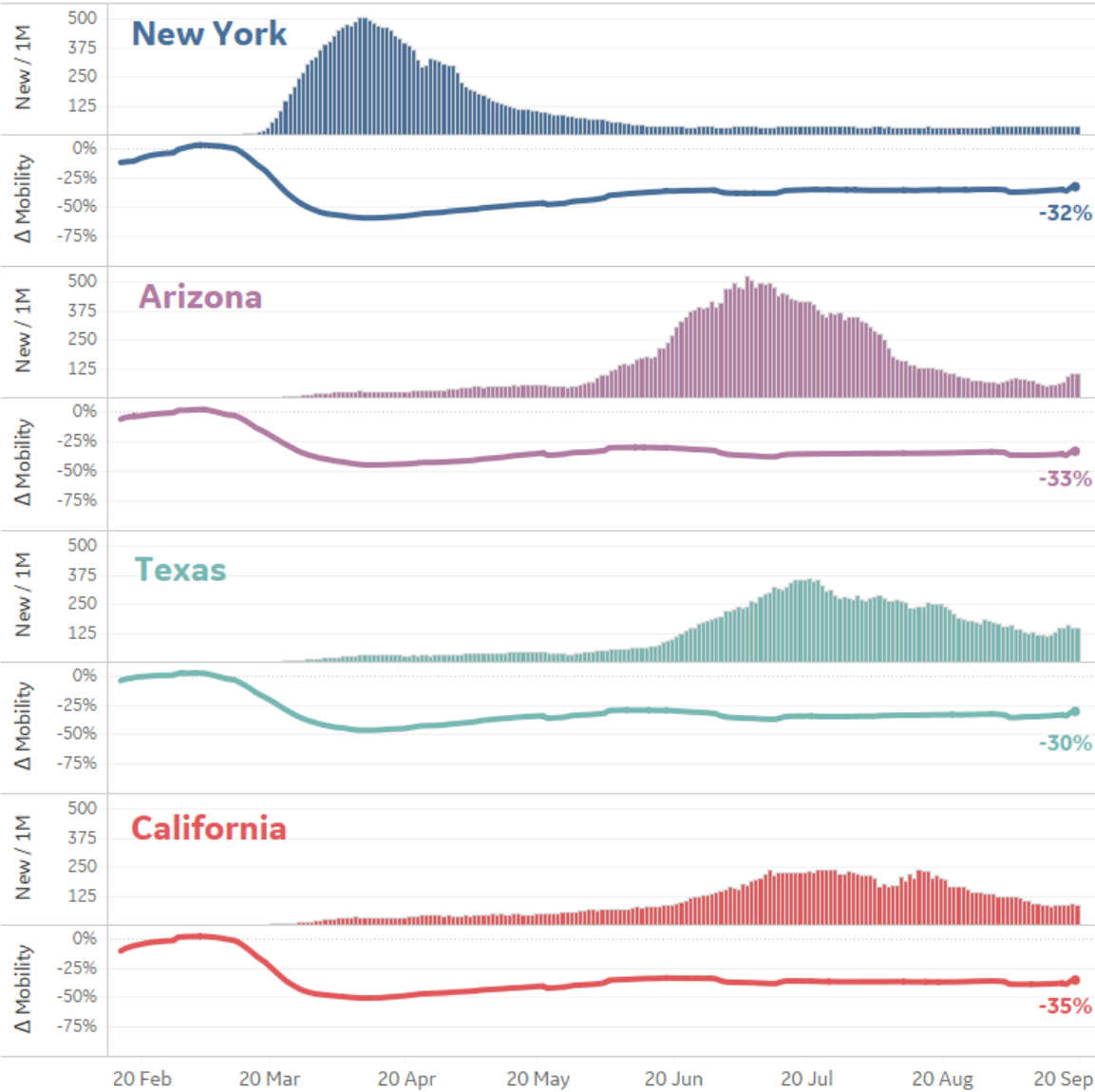
New / 1M = New confirmed cases / 1M, 7-day rolling avg **Δ Mobility** = % Change in Workplace Travel compared to Jan 2020 Baseline, 7-day rolling avg (Source: Google Maps Mobility Data)





Feature: Mobility in Select US States

New / 1M = New confirmed cases / 1M, 7-day rolling avg **Δ Mobility** = % Change in Workplace Travel compared to Jan 2020 Baseline, 7-day rolling avg (Source: Google Maps Mobility Data)





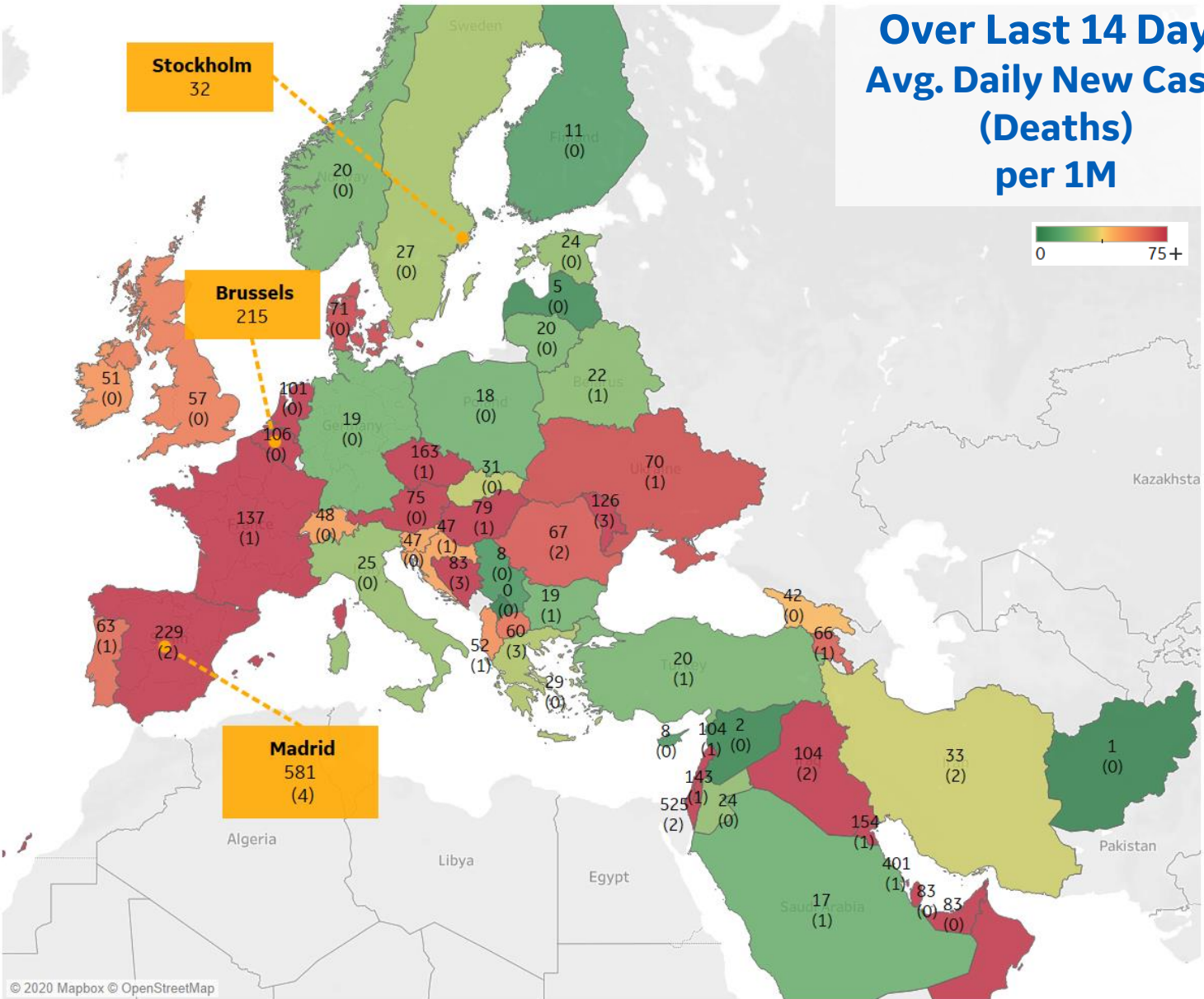
Per 1M in Region

	Today	Change
Active Cases	2,279	+2%
Confirmed	73 new	+1%
Deaths	1 new	+0.4%
Recovered	31 new	+1%

Most Daily New Cases / 1M

Israel	525
Bahrain	401
Spain	229
Czechia	163
Kuwait	154
France	137
Moldova	126
Belgium	106
Iraq	104
Lebanon	104

* Excludes regions with population < 1M



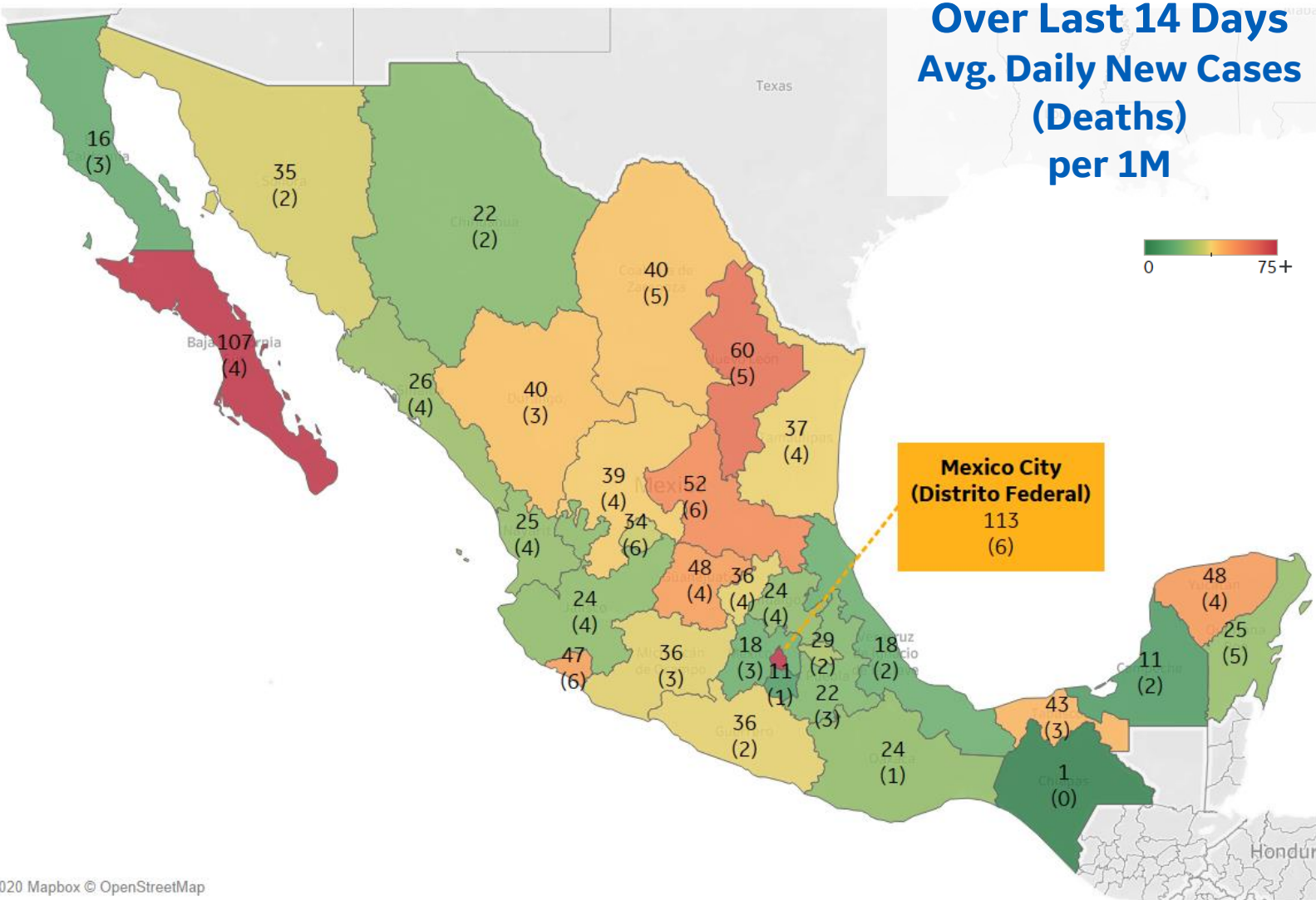


Per 1M in Region

	Today	Change
Active Cases	260	+5%
Confirmed	37 new	+0.7%
Deaths	5 new	+0.8%
Recovered	21 new	+0.5%

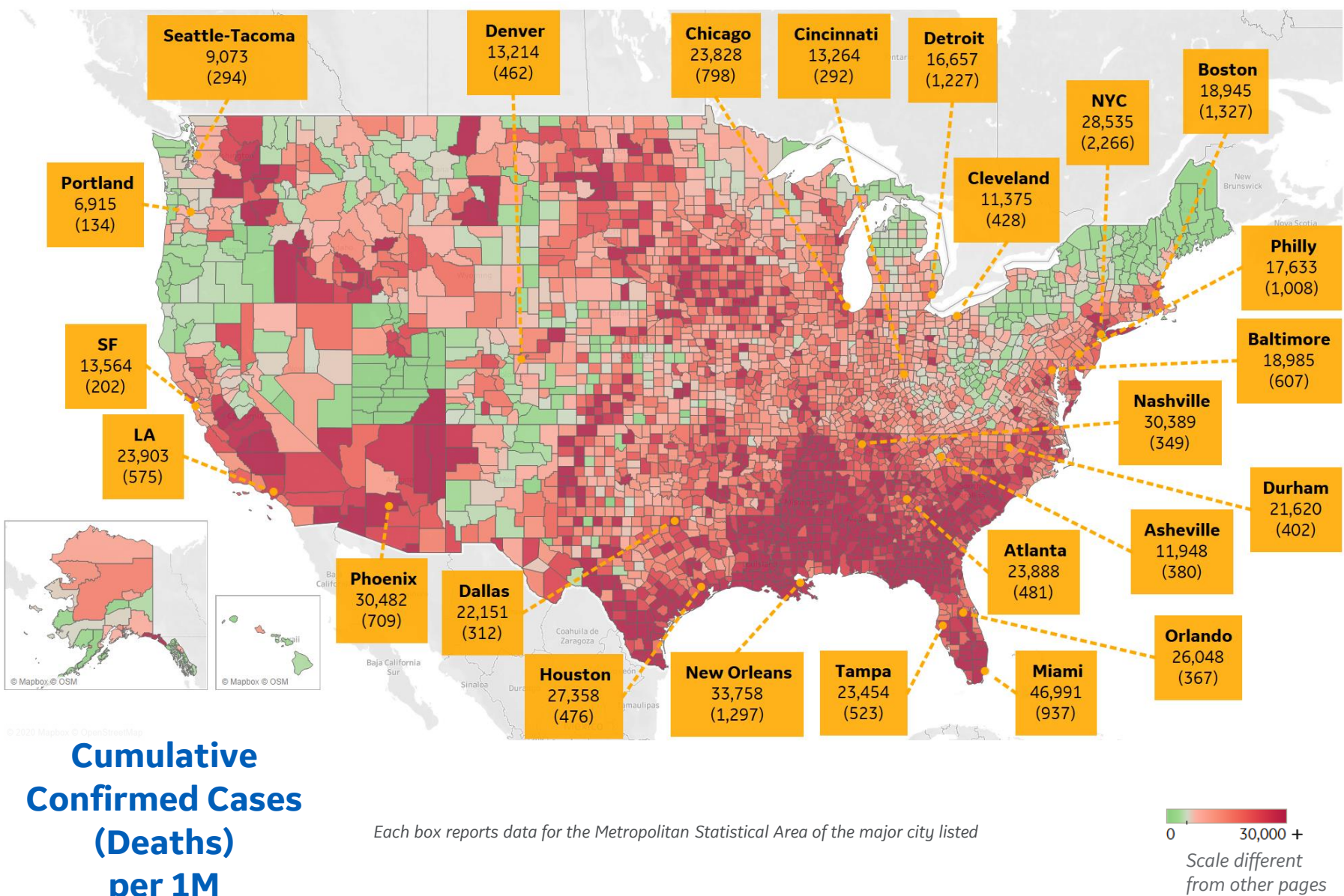
Most Daily New Cases / 1M

Distrito Federal	113
Baja California Sur	107
Nuevo León	60
San Luis Potosí	52
Yucatán	48
Guanajuato	48
Colima	47
Tabasco	43
Durango	40
Coahuila	40





US by County & Metro, Cumulative to Date



Top 25 Counties

Cumulative Confirmed Cases / 1M

Miami-Dade County, FL	61,790
Nueces County, TX	55,949
Cameron County, TX	53,275
Webb County, TX	48,324
Rockland County, NY	45,901
Yakima County, WA	45,106
Jefferson Parish, LA	40,199
Westchester County, NY	39,176
Broward County, FL	38,994
Escambia County, FL	38,022
Charleston County, SC	37,950
Davidson County, TN	37,736
Passaic County, NJ	37,617
Hidalgo County, TX	35,872
Richland County, SC	35,335
Kern County, CA	35,155
Leon County, FL	34,757
Lubbock County, TX	34,392
Nassau County, NY	34,186
East Baton Rouge Parish, LA	34,048
Tulare County, CA	33,853
Galveston County, TX	33,603
Collier County, FL	32,645
Osceola County, FL	32,599
Shelby County, TN	32,435

Note: Includes counties ≥ 250K population

* New York City counties aggregated into one reporting area



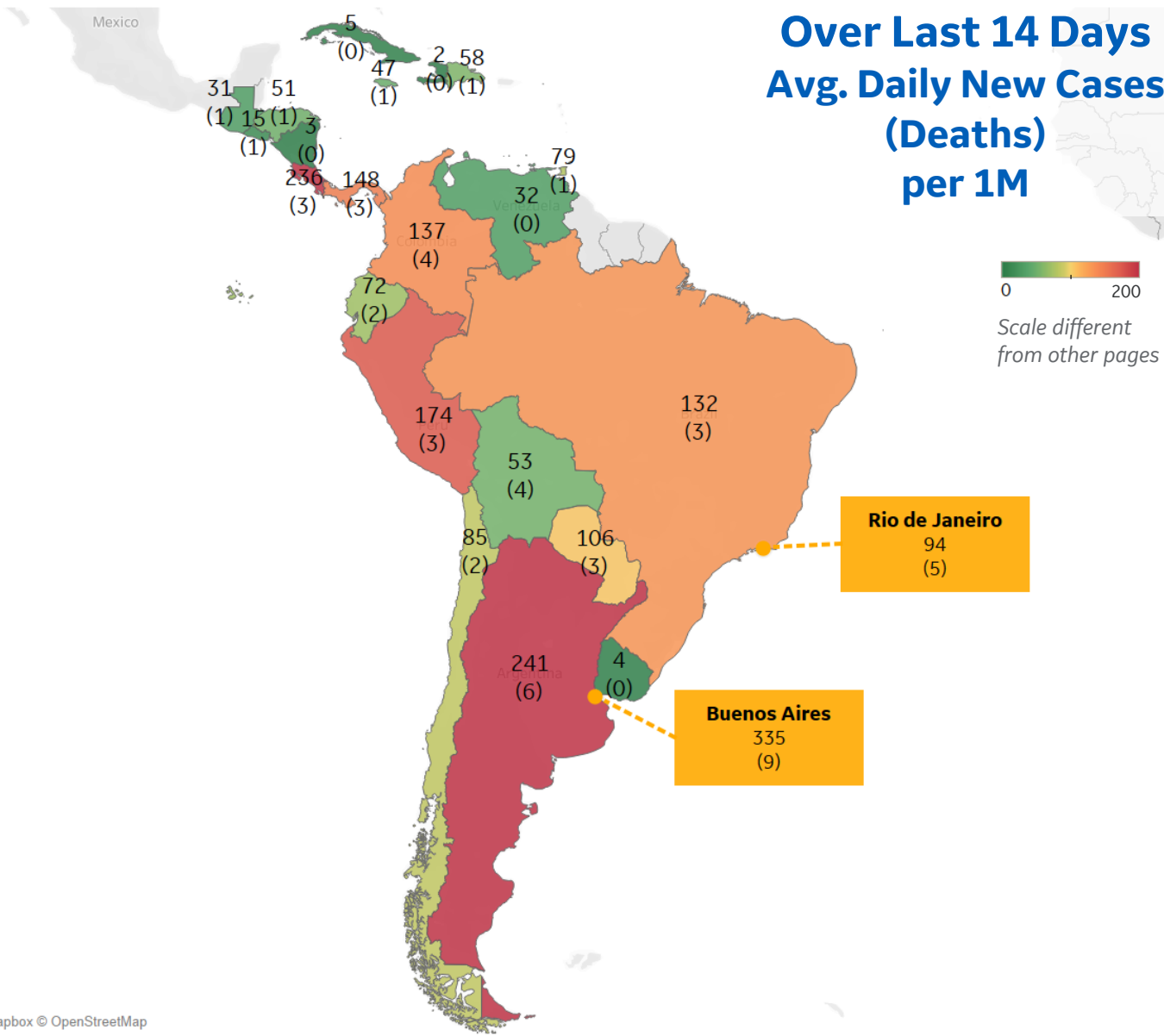
Per 1M in Region

	Today	Change
Active Cases	1,889	-6%
Confirmed	72 new	+0.5%
Deaths	2 new	+0.5%
Recovered	186 new	+1%

Most Daily New Cases / 1M

Argentina	241
Costa Rica	236
Peru	174
Panama	148
Colombia	137
Brazil	132
Paraguay	106
Chile	85
Trinidad and Toba..	79
Ecuador	72

* Excludes regions with population < 1M





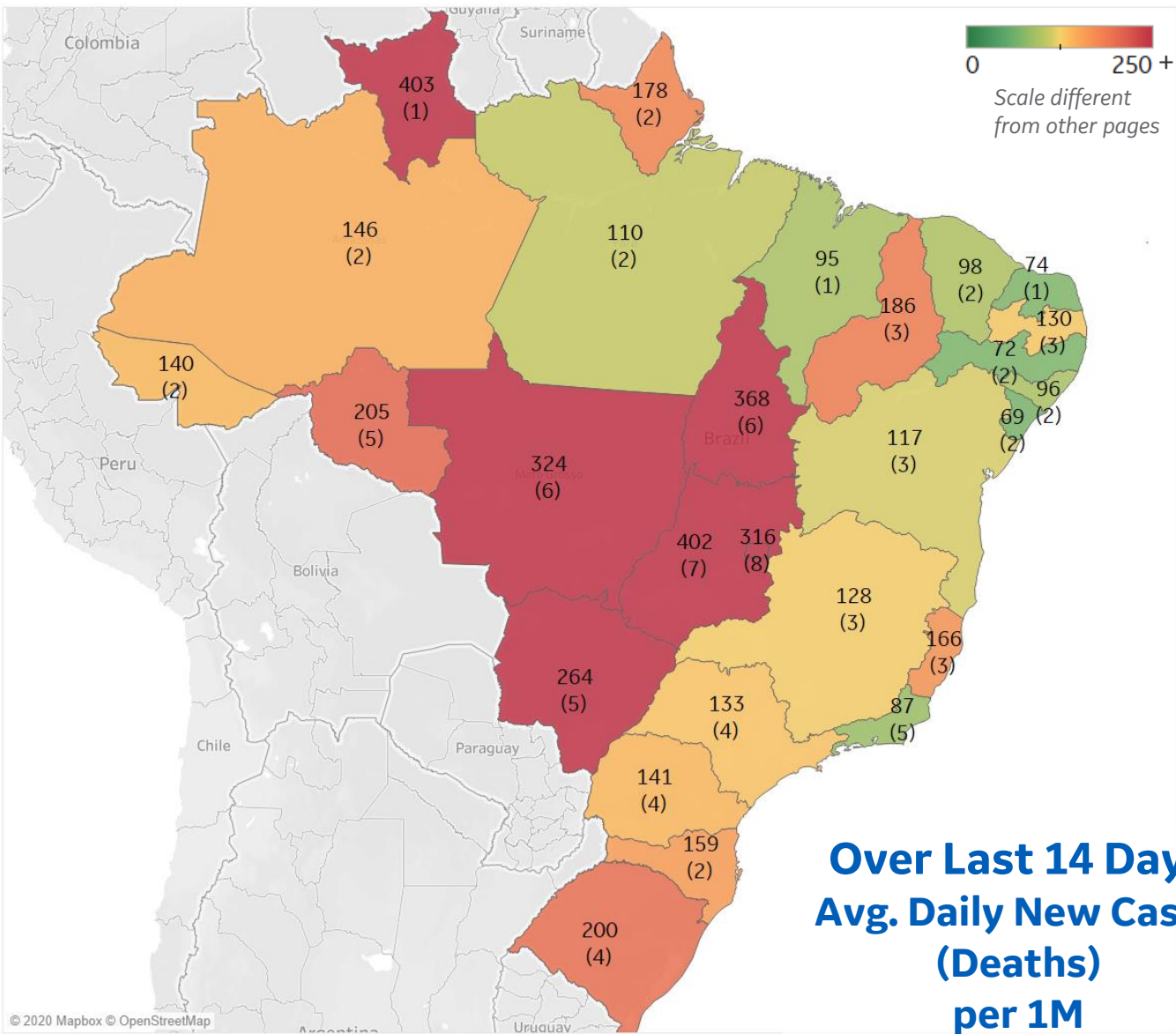
Per 1M in Region

	Today	Change
Active Cases	1,912	-7%
Confirmed	0 new	+0%
Deaths	0 new	+0%
Recovered	142 new	+1%

Most Daily New Cases / 1M

Goiás	402
Tocantins	368
MatoGrosso	324
Distrito Federal	316
MatoGrosso d..	264
Rondônia	205
Rio Grande do ..	200
Piauí	186
Espírito Santo	166
Santa Catarina	159

* Excludes regions with population < 1M





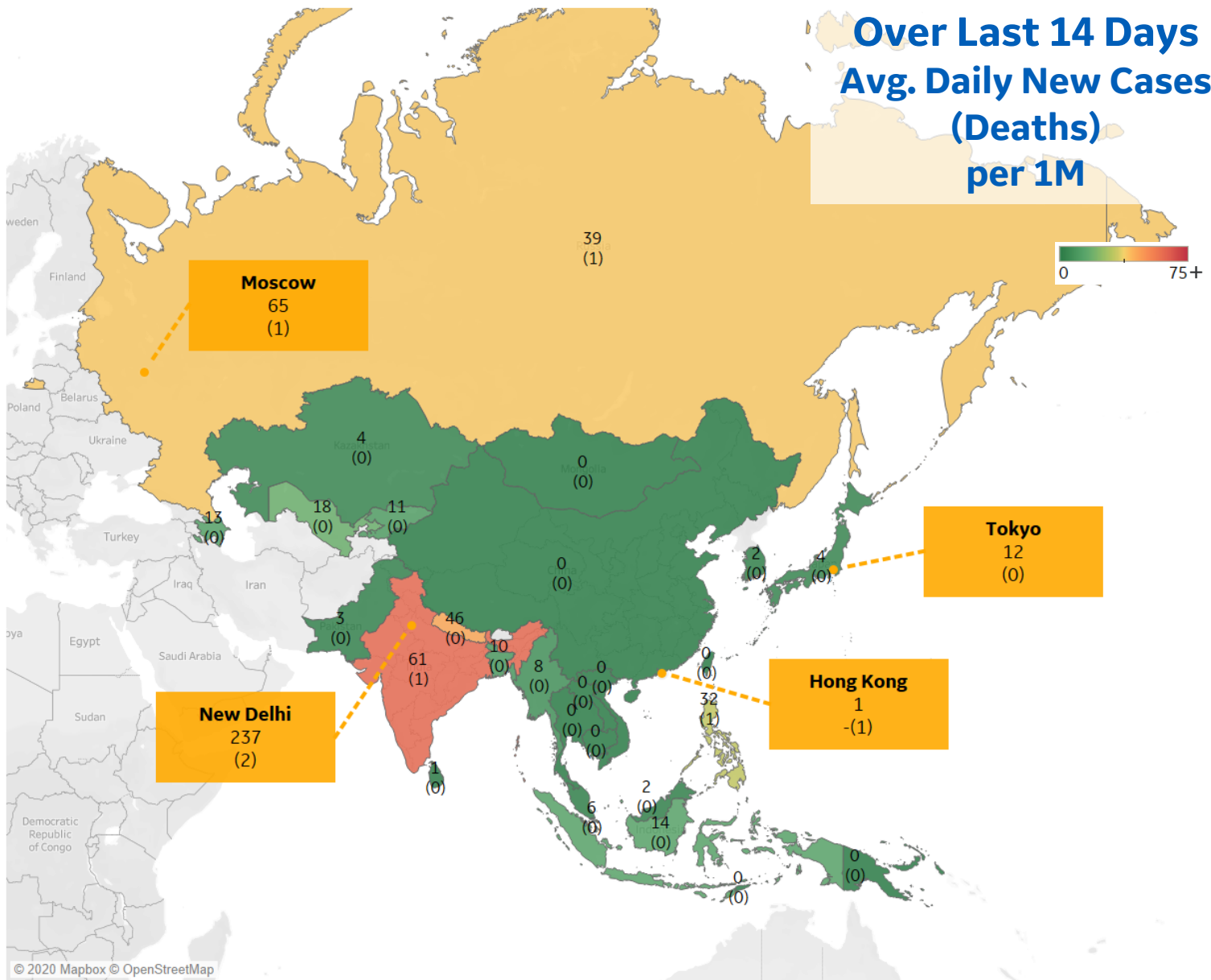
Per 1M in Region

	Today	Change
Active Cases	322	+0.0%
Confirmed	24 new	+1.2%
Deaths	0.3 new	+1.0%
Recovered	25 new	+1.6%

Most Daily New Cases / 1M

India	61
Nepal	46
Russia	39
Philippines	32
Uzbekistan	18
Indonesia	14
Azerbaijan	13
Kyrgyzstan	11
Bangladesh	10
Myanmar	8

* Excludes regions with population < 1M





Per 1M in Region

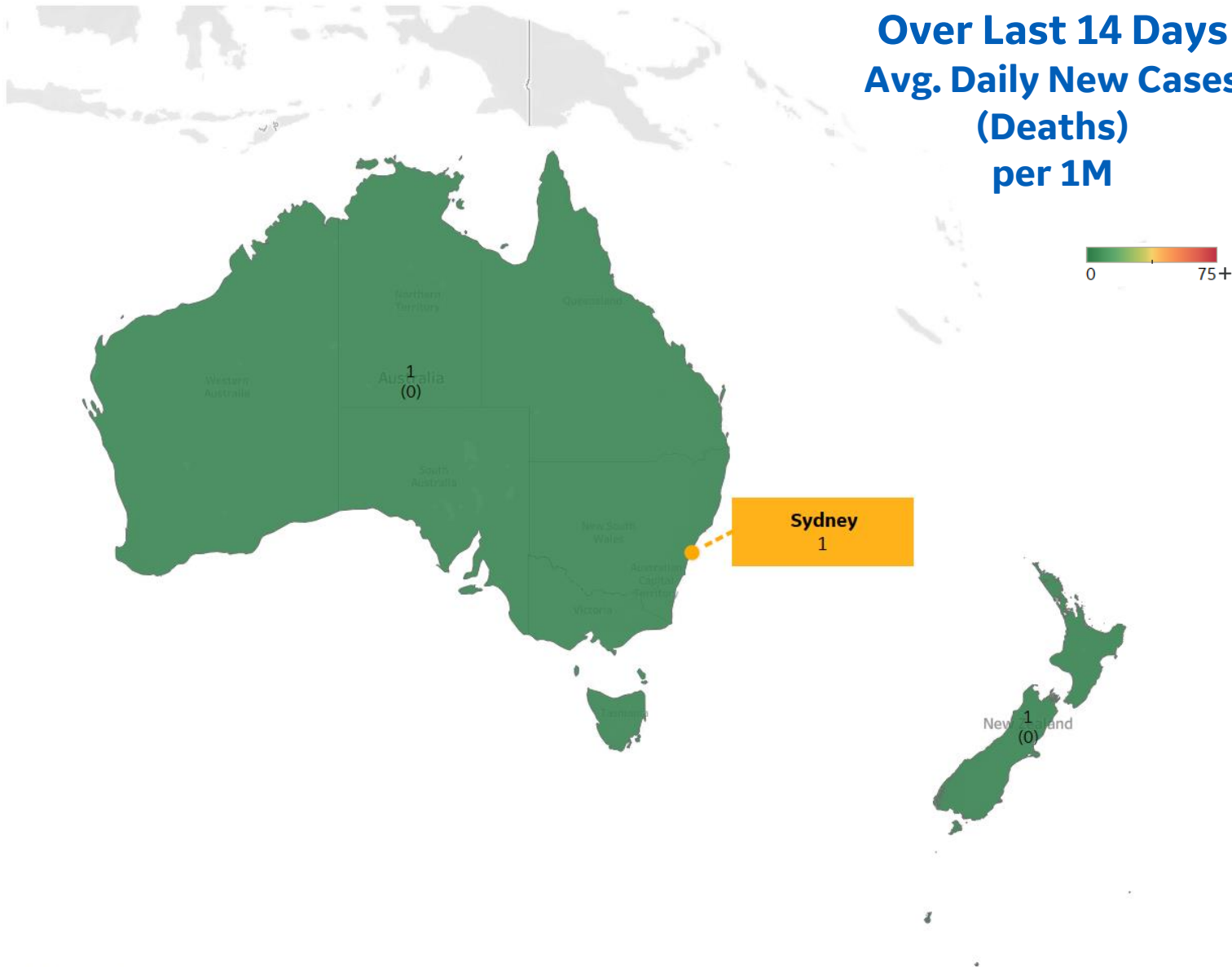
	Today	Change
Active Cases	56	-6%
Confirmed	0 new	+0%
Deaths	0.1 new	+0.2%
Recovered	4 new	+0.5%

Most Daily New Cases / 1M

Australia	1
New Zealand	1

* Excludes regions with population < 1M

Over Last 14 Days Avg. Daily New Cases (Deaths) per 1M





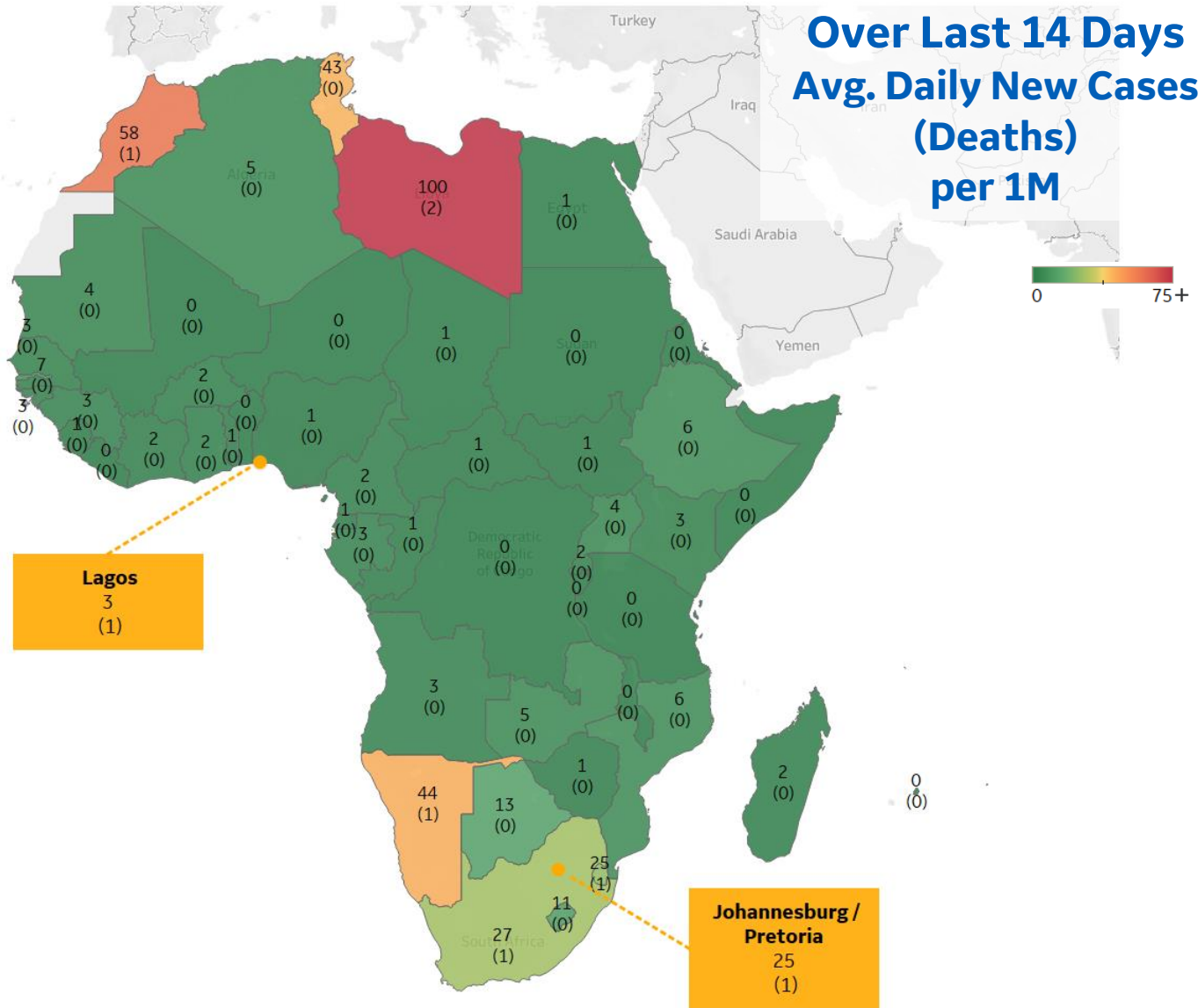
Per 1M in Region

	Today	Change
Active Cases	164	+1%
Confirmed	7 new	+0.6%
Deaths	0.2 new	+0.6%
Recovered	5 new	+0.6%

Most Daily New Cases / 1M

Libya	100
Morocco	58
Namibia	44
Tunisia	43
South Africa	27
Eswatini	25
Botswana	13
Lesotho	11
Gambia	7
Ethiopia	6

* Excludes regions with population < 1M





Sources



*** Per 1M = Per 1 Million Population unless otherwise noted*

Johns Hopkins Coronavirus Resource Center:

<https://coronavirus.jhu.edu/map.html>

Worldometer Coronavirus Reporting:

<https://www.worldometers.info/coronavirus/>

Public Health England:

<https://www.gov.uk/government/publications/covid-19-track-coronavirus-cases>

US Department of Homeland Security, Homeland Infrastructure Foundation-Level Data:

<https://hifld-geoplatform.opendata.arcgis.com/datasets/hospitals>

City of New York, NYC Health:

<https://www1.nyc.gov/site/doh/covid/covid-19-data.page>

Chicago Coronavirus Latest Data:

<https://www.chicago.gov/city/en/sites/covid-19/home/latest-data.html>

National Health Commission of the PRC:

<http://www.nhc.gov.cn/xcs/yqtb/202003/bf66696029ba420098164607240074f8.shtml>

Korean Centers for Disease Control and Prevention:

http://www.cdc.go.kr/cdc_eng/

CDC, Severe Outcomes Among Patients with Coronavirus Disease 2019 (COVID-19):

<https://www.cdc.gov/mmwr/volumes/69/wr/mm6912e2.htm>

Italian Department of Civil Protection, COVID Monitoring:

<http://opendatadpc.maps.arcgis.com/apps/opsdashboard/index.html#/b0c68bce2cce478eaac82fe38d4138b1>

The COVID Tracking Project:

<https://covidtracking.com/data/>

UK Office for National Statistics

<https://www.ons.gov.uk/peoplepopulationandcommunity/birthsdeathsandmarriages/deaths/bulletins/deathsregisteredweeklyinenglandandwalesprovisional/weekending24april2020>

COVID-19 Information for Switzerland:

<https://www.corona-data.ch/>

Provincial Health Services Authority of Canada. BC Center for Disease Control:

<http://www.bccdc.ca/about/news-stories/stories/2020/information-on-novel-coronavirus>

Secretary of Health, Mexico:

<https://www.gob.mx/salud/en>

OECD Economic Outlooks, Statistics:

https://www.oecd-ilibrary.org/economics/data/oecd-economic-outlook-statistics-and-projections_eo-data-en

Public Health Authority of Sweden:

<https://www.folkhalsomyndigheten.se/smittskydd-beredskap/utbrott/aktuella-utbrott/covid-19/bekraftade-fall-i-sverige>

National Public Health Agency of France:

<https://www.santepubliquefrance.fr/regions/ile-de-france/documents/bulletin-regional/2020/covid-19-point-epidemiologique-en-ile-de-france-du-23-avril-2020>

Florida Department of Health, COVID-19 Response:

<https://floridahealthcovid19.gov>

CDC:

<https://www.cdc.gov/covid-data-tracker/index.html#demographics>

CDC Provisional COVID19 Deaths Counts

<https://data.cdc.gov/NCHS/Provisional-COVID-19-Death-Counts-by-Sex-Age-and-S/9bhg-hcku>

Johns Hopkins Coronavirus Resource Center:

<https://coronavirus.jhu.edu/map.html>

WHO Europe, Surveillance Report:

<http://www.euro.who.int/en/health-topics/health-emergencies/coronavirus-covid-19/weekly-surveillance-report>

WHO Europe, Principles for Transition:

<http://www.euro.who.int/en/media-centre/sections/statements/2020/statement-transition-to-a-new-normal-during-the-covid-19-pandemic-must-be-guided-by-public-health-principles>

Google Mobility Data:

<https://www.google.com/covid19/mobility/>