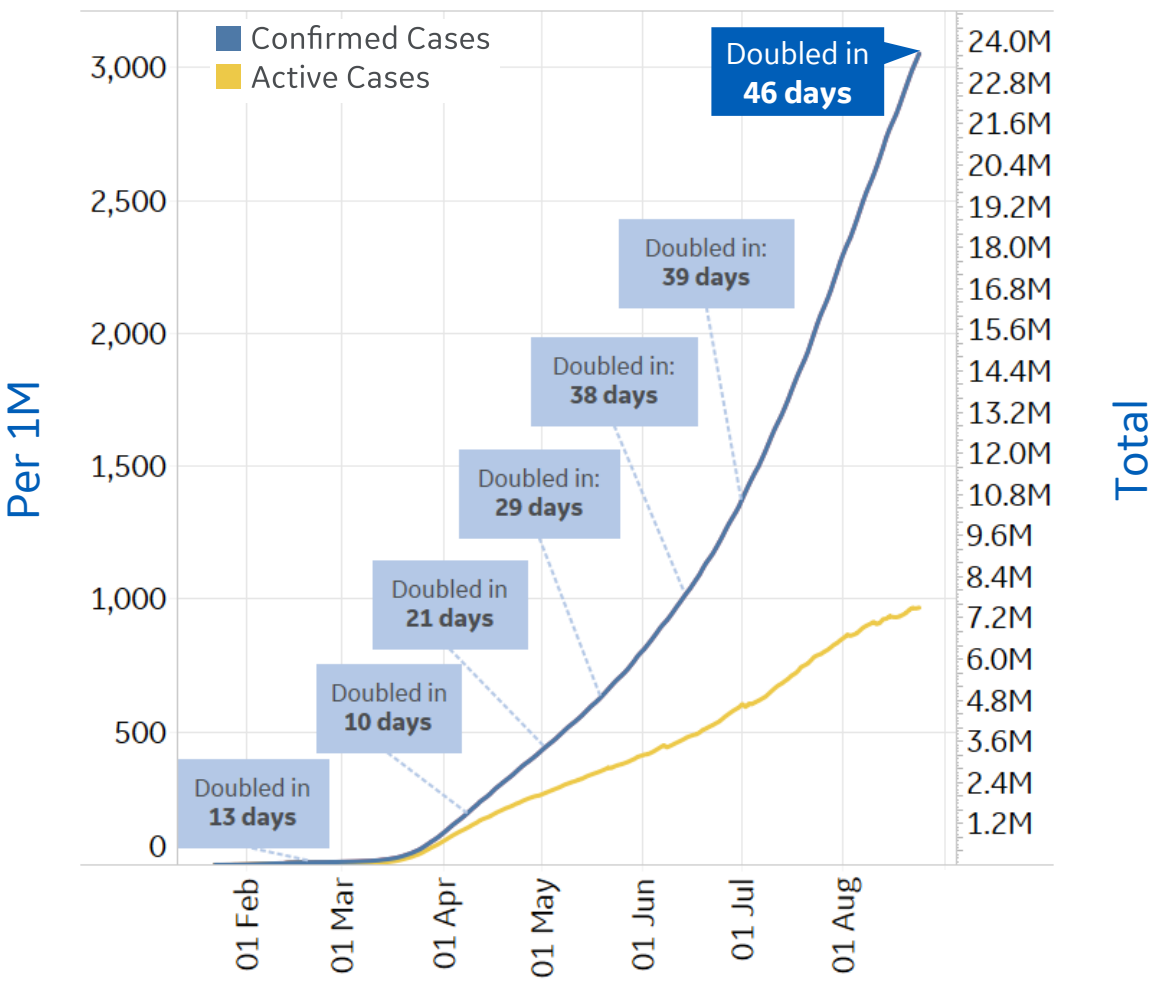




Global Confirmed & Active Cases

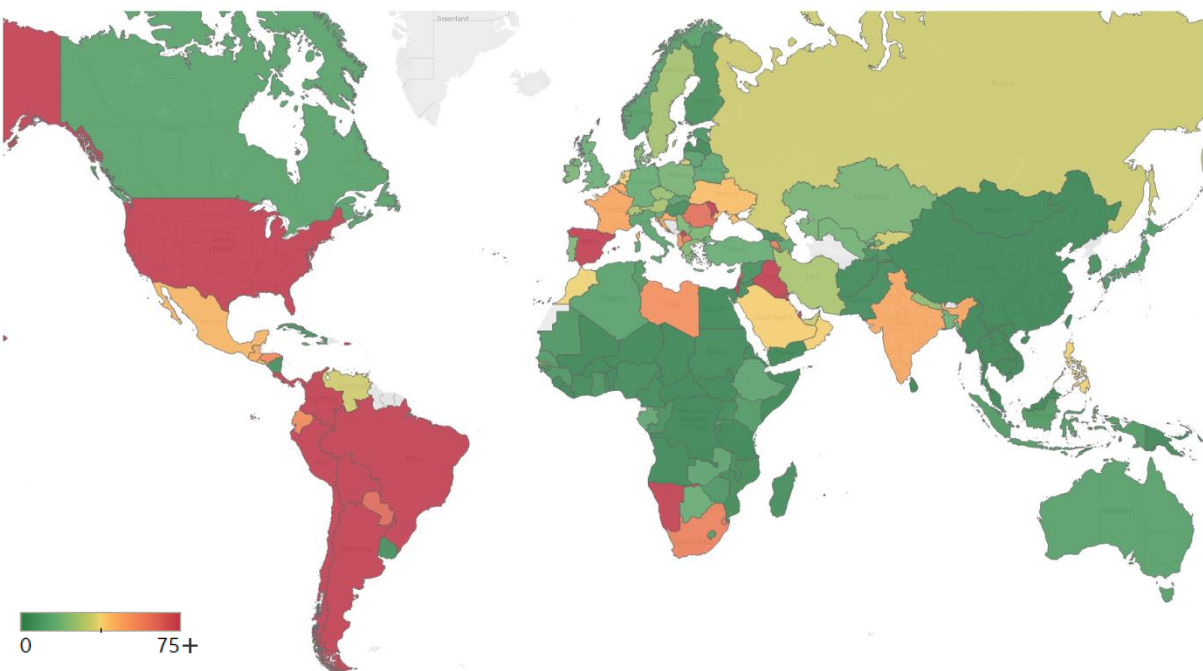
Updated 25 August 2020, 3:30 GMT 1

Trend since 22 Jan



Avg. Daily New Cases / 1M

Over the last 14 days



Per 1M:	Today		Change
Active Today	968		+0%
Active	3	new	+0%
Confirmed	29	new	+1%
Deaths	1	new	+1%
Recovered	26	new	+1%

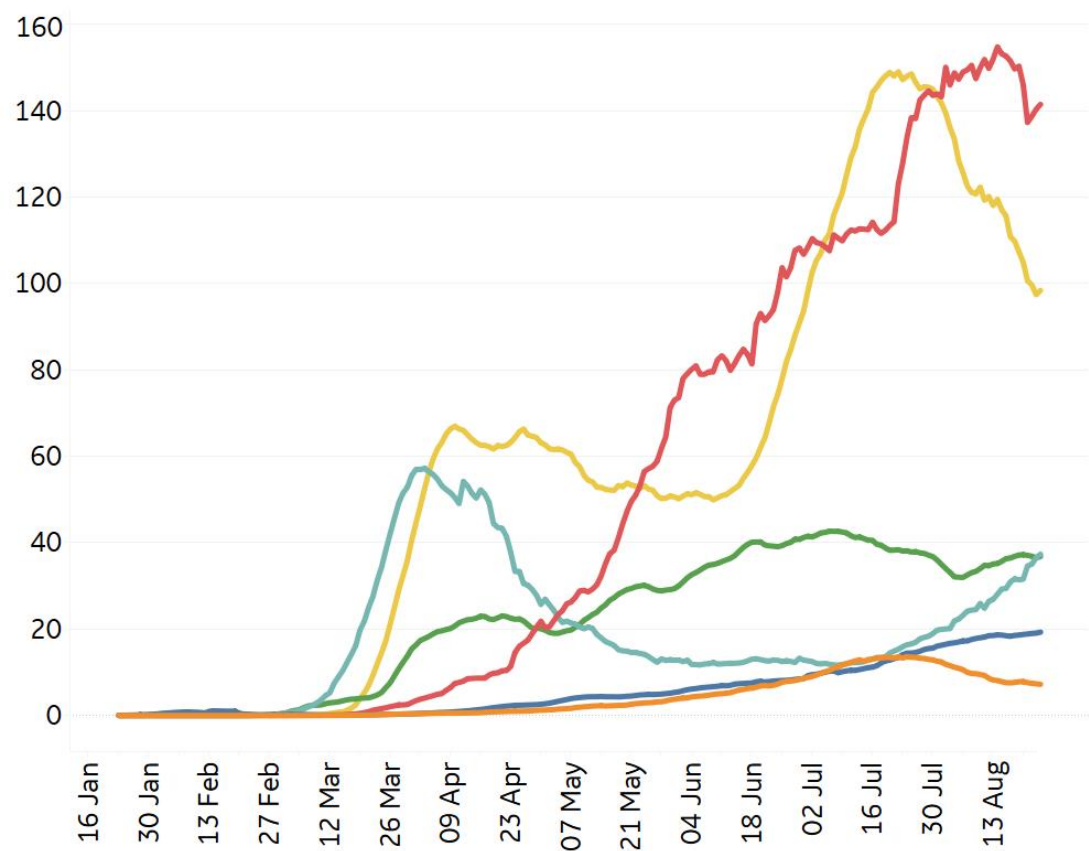


New Confirmed Cases & New Deaths

Key North America Europe Middle East Central/South America Asia Africa

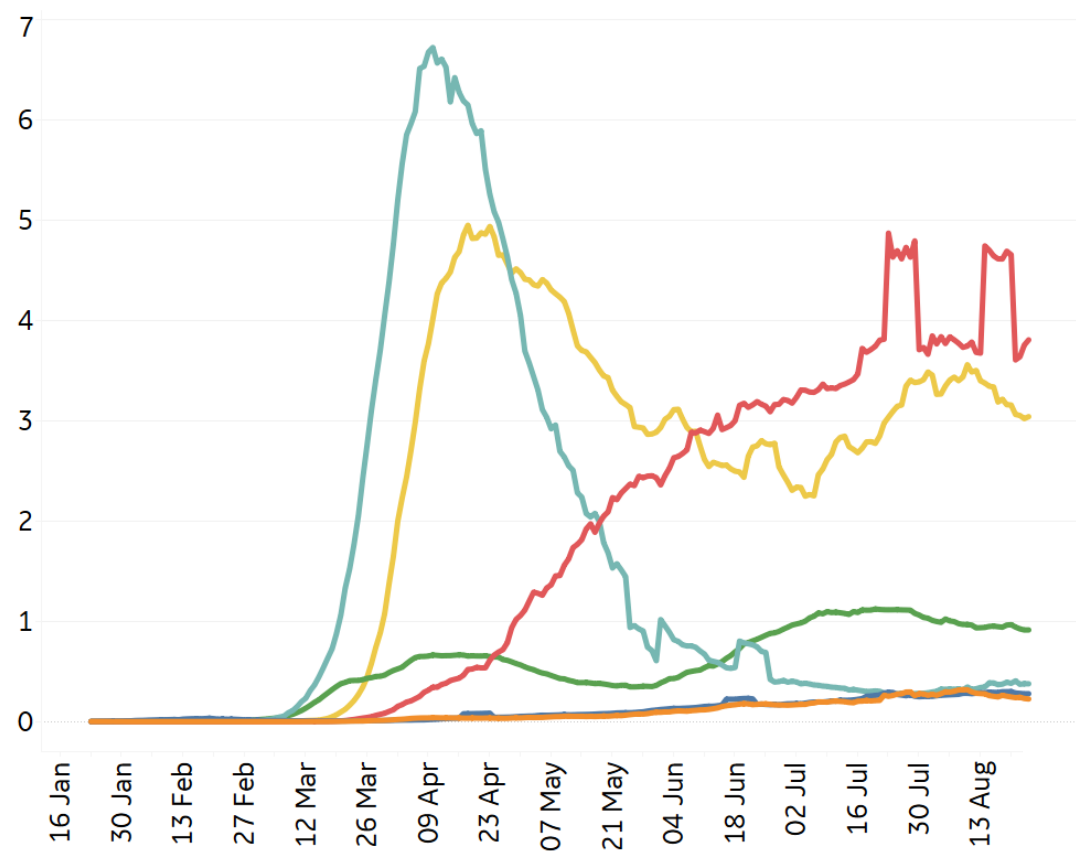
New Confirmed Cases / 1M

7-day rolling average



New Deaths / 1M

7-day rolling average





Top 50 Countries: Per 1M



1 - 25

	Today		Total Since 22 Jan			Change from 14d Ago [*] in 14 day avg of daily new	
	New Confirmed	New Deaths	Total Confirmed	Total Recovered	Total Deaths	Confirmed	Deaths
Belgium	13	0	7,083	1,574	862	-9%	105%
Peru	276	6	18,025	12,112	839	19%	123%
Spain	415	1	8,672	3,216	618	87%	108%
UK	14	0	4,841	23	612	30%	-24%
Italy	16	0	4,305	3,402	586	109%	139%
Sweden	65	0	8,587	N/A*	576	5%	-29%
Chile	100	3	20,902	19,484	571	-10%	-18%
Brazil	80	3	17,044	14,002	542	-8%	-4%
US	115	1	17,340	6,105	536	-20%	-6%
Mexico	27	2	4,372	3,616	472	-14%	-13%
France	30	0	4,327	1,308	468	127%	79%
Panama	136	3	20,276	14,412	442	-13%	-29%
Bolivia	86	6	9,436	4,031	392	-9%	-19%
Netherlands	38	0	4,040	38	363	38%	172%
Ireland	30	0	5,694	4,732	360	54%	-38%
Ecuador	29	1	6,138	5,378	358	0%	-3%
Colombia	207	6	10,842	7,550	346	10%	2%
EU	64	0	4,000	2,045	313	59%	35%
Armenia	11	1	14,452	12,165	288	-21%	-32%
North Macedo..	37	2	6,563	4,872	273	0%	-35%
Kosovo	0	0	6,746	4,609	253	-33%	-19%
Iran	27	2	4,300	3,707	247	-8%	-20%
Moldova	87	1	8,386	5,843	234	28%	-7%
Switzerland	18	0	4,629	3,975	231	50%	56%
South Africa	28	2	10,310	8,709	222	-57%	-29%

26 - 50

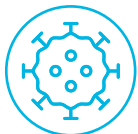
	Today		Total Since 22 Jan			Change from 14d Ago [*] in 14 day avg of daily new	
	New Confirmed	New Deaths	Total Confirmed	Total Recovered	Total Deaths	Confirmed	Deaths
Portugal	12	0	5,465	4,009	177	15%	5%
Romania	43	2	4,124	1,846	172	1%	11%
Honduras	98	3	5,601	864	170	-6%	-48%
Bos. and Herz.	96	5	5,495	3,615	167	-12%	-7%
Argentina	193	8	7,763	5,682	163	12%	53%
Iraq	91	2	5,171	3,739	162	33%	5%
Kyrgyzstan	16	0	6,610	5,612	162	-55%	-341%
Guatemala	19	1	3,825	3,223	146	-1%	-16%
Dom. Rep.	41	1	8,445	5,675	145	-32%	0%
Oman	145	5	16,549	15,453	125	-42%	-9%
Kuwait	101	1	18,958	17,076	121	7%	-18%
Russia	32	0	6,572	5,286	112	-8%	-13%
Bahrain	229	1	29,219	27,217	109	8%	0%
Saudi Arabia	34	1	8,866	8,126	106	-11%	12%
El Salvador	29	1	3,825	1,926	103	-33%	-32%
Israel	209	2	12,070	9,432	98	-5%	68%
Kazakhstan	10	0	5,587	4,975	75	-69%	-25%
Costa Rica	126	1	6,765	2,504	71	32%	-9%
Belarus	19	0	7,476	7,294	68	0%	12%
Qatar	90	0	40,702	39,603	67	9%	-74%
UAE	28	0	6,803	5,923	38	30%	58%
West Bank an..	90	1	4,205	2,598	29	21%	50%
Gabon	9	0	3,778	3,127	24	-51%	0%
Singapore	9	0	9,641	9,331	5	-75%	N/A
Total World	29	1	3,053	1,980	105	-1%	2%

*Change from 14d ago:
Compares 14d-avgs. of Daily New Cases/Deaths
today with 14d-avgs. from 14d ago

Confirmed cases in **Brazil** grew 24% since 1 August

Sorted by Total Deaths / 1M
Top 50 countries selected by Cases / 1M
Excluded countries with population < 1M

N/A* due to inconsistent reporting of Recovered Cases



Top 50 Countries: Raw Volume

Updated 25 August 2020, 3:30 GMT

4

1 - 25

	Today		Total Since 22 Jan			Change from 14d Ago [*] in 14 day avg of daily new	
	New Confirmed	New Deaths	Total Confirmed	Total Recovered	Total Deaths	Confirmed	Deaths
US	38,045	450	5,739,724	2,020,774	177,252	-20%	-6%
EU	28,301	140	1,781,211	910,522	139,204	59%	35%
Brazil	17,078	565	3,622,861	2,976,256	115,309	-8%	-4%
Mexico	3,541	320	563,705	466,209	60,800	-14%	-13%
India	60,975	848	3,167,323	2,404,585	58,390	14%	11%
UK	977	4	328,620	N/A*	41,519	30%	-24%
Italy	953	4	260,298	205,662	35,441	109%	139%
France	1,955	15	282,414	85,352	30,533	127%	79%
Spain	19,382	34	405,436	150,376	28,872	87%	108%
Peru	9,090	210	594,326	399,357	27,663	19%	123%
Iran	2,245	133	361,150	311,365	20,776	-8%	-20%
Colombia	10,549	296	551,688	384,165	17,612	10%	2%
Russia	4,688	65	959,016	771,357	16,406	-8%	-13%
South Africa	1,677	100	611,450	516,494	13,159	-57%	-29%
Chile	1,903	64	399,568	372,464	10,916	-10%	-18%
Belgium	156	4	82,092	18,242	9,996	-9%	105%
Germany	1,628	1	236,122	208,653	9,276	55%	-6%
Canada	777	10	127,594	113,449	9,129	-1%	7%
Argentina	8,713	381	350,867	256,789	7,366	12%	53%
Indonesia	1,877	79	155,412	111,060	6,759	6%	7%
Iraq	3,644	91	207,985	150,389	6,519	33%	5%
Ecuador	520	12	108,289	94,878	6,322	0%	-3%
Pakistan	0	0	293,261	276,829	6,244	-17%	-42%
Netherlands	654	2	69,224	649	6,227	38%	172%
Turkey	1,443	18	259,692	237,908	6,139	18%	23%

26 - 50

	Today		Total Since 22 Jan			Change from 14d Ago [*] in 14 day avg of daily new	
	New Confirmed	New Deaths	Total Confirmed	Total Recovered	Total Deaths	Confirmed	Deaths
Sweden	653	3	86,721	N/A*	5,813	5%	-29%
Egypt	138	18	97,478	66,817	5,280	-43%	-36%
China	23	0	89,718	84,058	4,711	-62%	-33%
Bolivia	999	69	110,148	47,050	4,578	-9%	-19%
Bangladesh	2,485	42	297,083	182,875	3,983	7%	15%
Saudi Arabia	1,175	42	308,654	282,888	3,691	-11%	12%
Romania	825	37	79,330	35,517	3,309	1%	11%
Philippines	4,651	12	194,252	132,042	3,010	6%	105%
Guatemala	345	17	68,533	57,735	2,611	-1%	-16%
Ukraine	1,855	22	109,234	54,262	2,335	52%	23%
Poland	548	5	62,310	42,448	1,960	10%	14%
Panama	585	14	87,485	62,185	1,906	-13%	-29%
Portugal	123	5	55,720	40,880	1,801	15%	5%
Honduras	968	29	55,479	8,556	1,683	-6%	-48%
Dom. Rep.	447	6	91,608	61,558	1,573	-32%	0%
Kazakhstan	184	0	104,902	93,405	1,415	-69%	-25%
Japan	500	13	63,158	49,089	1,201	-27%	176%
Israel	1,809	13	104,472	81,642	847	-5%	68%
Belarus	177	4	70,645	68,925	646	0%	12%
Oman	740	28	84,509	78,912	637	-42%	-9%
Kuwait	432	3	80,960	72,925	518	7%	-18%
UAE	275	1	67,282	58,582	376	30%	58%
Qatar	258	1	117,266	114,099	194	9%	-74%
Singapore	51	0	56,404	54,587	27	-75%	N/A
Total World	226,959	4,346	23,647,377	15,337,252	813,022	-1%	2%

*Change from 14d ago:
Compares 14d-avgs. of Daily New Cases/Deaths
today with 14d-avgs. from 14d ago

Reported Deaths **Worldwide** surpassed 800K (813,022)

Sorted by Raw Total Deaths
Top 50countries selected by Total Cases
Excluded countries with population < 1M

N/A* due to inconsistent reporting of Recovered Cases



United States: Per 1M



1 - 25

	Today		Total Since 22 Jan			Change from 14d Ago* in 14 day avg of daily new	
	New Confirmed	New Deaths	Total Confirmed	Total Recovered	Total Deaths	Confirmed	Deaths
New Jersey	25	0	21,359	3,786	1,795	-5%	-3%
New York	21	0	22,111	3,839	1,691	3%	-17%
Massachusetts	96	4	18,284	14,828	1,298	-8%	4%
Connecticut	138	0	14,588	2,494	1,251	7%	-27%
Louisiana	134	4	30,882	25,409	1,025	-45%	0%
Rhode Island	264	5	20,108	1,937	977	10%	91%
DC	149	0	19,326	15,352	856	-14%	30%
Mississippi	172	3	26,344	19,010	755	-24%	-15%
Michigan	88	0	10,783	7,268	667	8%	19%
Arizona	43	0	27,259	4,031	655	-52%	-27%
Illinois	127	1	17,614	N/A	639	22%	6%
Delaware	48	4	17,398	9,214	620	11%	8%
Maryland	94	0	17,313	1,000	611	-19%	-24%
Pennsylvania	41	0	10,483	8,192	590	-3%	34%
S. Carolina	109	1	21,860	8,957	488	-35%	-11%
Georgia	217	2	24,135	N/A	486	-18%	33%
Florida	105	3	28,068	N/A	484	-33%	-6%
Indiana	247	1	13,011	9,526	479	10%	33%
Alabama	337	2	23,803	9,113	413	-30%	-16%
Texas	148	2	20,639	15,767	405	-13%	-26%
Nevada	133	1	21,431	523	390	-26%	8%
New Mexico	70	2	11,704	5,503	357	-24%	-10%
Ohio	73	1	9,894	8,175	341	-11%	-4%
Colorado	34	0	9,606	1,011	333	-28%	-3%
Iowa	147	3	18,037	13,863	332	24%	18%
Minnesota	127	1	12,465	11,181	322	-3%	40%

26 - 51

	Today		Total Since 22 Jan			Change from 14d Ago* in 14 day avg of daily new	
	New Confirmed	New Deaths	Total Confirmed	Total Recovered	Total Deaths	Confirmed	Deaths
Minnesota	127	1	12,465	11,181	322	-3%	40%
New Hampshire	24	0	5,251	4,744	316	-24%	0%
California	159	2	17,098	N/A	310	0%	-6%
Virginia	78	0	13,312	1,697	289	-8%	-41%
Washington	47	1	9,373	N/A	245	-20%	0%
N. Carolina	122	0	14,912	13,027	242	-11%	-5%
Missouri	133	0	12,480	N/A	237	2%	-1%
Tennessee	98	3	21,174	15,528	233	-20%	43%
Arkansas	106	3	18,853	16,797	231	-29%	3%
Nebraska	82	3	16,567	12,487	198	-5%	23%
Kentucky	186	3	9,826	2,136	198	16%	68%
Wisconsin	67	0	12,169	10,702	186	-12%	-21%
Oklahoma	90	1	13,526	11,286	184	-12%	17%
South Dakota	168	0	12,915	10,958	182	49%	-35%
North Dakota	163	1	13,122	10,768	180	39%	79%
Idaho	119	4	16,819	7,200	176	-16%	-11%
Kansas	305	1	13,231	527	147	47%	-8%
Utah	78	2	15,398	12,840	122	-12%	-16%
West Virginia	23	0	5,198	4,121	100	-8%	8%
Oregon	52	1	5,964	1,099	100	-12%	-6%
Maine	16	0	3,241	2,799	97	43%	0%
Vermont	14	0	2,510	2,212	93	78%	-100%
Montana	56	1	6,071	4,530	85	-6%	-43%
Wyoming	43	0	6,225	5,057	64	6%	200%
Alaska	94	0	6,575	2,544	44	-5%	20%
Hawaii	119	1	4,781	1,514	35	70%	125%

*Change from 14d ago:
Compares 14d-avgs. of Daily New Cases/Deaths
today with 14d-avgs. from 14d ago

In the month of August, confirmed cases in **Hawaii** grew 208%

Sorted by Total Deaths / 1M
N/As and negative deaths are due to states
revising and updating case counts



United States: Raw Volume



1 - 25

	Today		Total Since 22 Jan			Change from 14d Ago* in 14 day avg of daily new	
	New Confirmed	New Deaths	Total Confirmed	Total Recovered	Total Deaths	Confirmed	Deaths
New York	408	4	430,145	74,684	32,887	3%	-17%
New Jersey	225	0	189,719	33,626	15,946	-5%	-3%
California	6,281	82	675,561	N/A	12,235	0%	-6%
Texas	4,277	50	598,450	457,182	11,749	-13%	-26%
Florida	2,258	72	602,829	N/A	10,397	-33%	-6%
Massachusetts	662	28	126,022	102,205	8,949	-8%	4%
Illinois	1,612	8	223,206	N/A	8,097	22%	6%
Pennsylvania	525	0	134,204	104,873	7,557	-3%	34%
Michigan	878	4	107,686	72,580	6,663	8%	19%
Georgia	2,304	24	256,253	N/A	5,156	-18%	33%
Arizona	311	0	198,414	29,341	4,771	-52%	-27%
Louisiana	623	18	143,566	118,120	4,764	-45%	0%
Connecticut	N/A	0	52,011	8,893	4,460	7%	-27%
Ohio	849	8	115,651	95,554	3,986	-11%	-4%
Maryland	567	3	104,669	6,047	3,694	-19%	-24%
Indiana	1,660	5	87,592	64,131	3,225	10%	33%
N. Carolina	1,283	4	156,396	136,630	2,535	-11%	-5%
S. Carolina	563	7	112,551	46,118	2,511	-35%	-11%
Virginia	663	4	113,623	14,482	2,471	-8%	-41%
Mississippi	511	8	78,405	56,577	2,248	-24%	-15%
Alabama	1,650	11	116,710	44,684	2,024	-30%	-16%
Colorado	198	1	55,321	5,823	1,919	-28%	-3%
Washington	359	4	71,371	N/A	1,867	-20%	0%
Minnesota	714	4	70,298	63,059	1,817	-3%	40%
Tennessee	667	21	144,604	106,041	1,588	-20%	43%

26 - 51

	Today		Total Since 22 Jan			Change from 14d Ago* in 14 day avg of daily new	
	New Confirmed	New Deaths	Total Confirmed	Total Recovered	Total Deaths	Confirmed	Deaths
Missouri	814	0	76,597	N/A	1,453	2%	-1%
Nevada	409	3	66,010	1,611	1,200	-26%	8%
Wisconsin	392	0	70,854	62,310	1,081	-12%	-21%
Iowa	463	10	56,909	43,738	1,047	24%	18%
Rhode Island	280	5	21,302	2,052	1,035	10%	91%
Kentucky	832	12	43,898	9,544	884	16%	68%
New Mexico	146	4	24,542	11,539	749	-24%	-10%
Oklahoma	357	4	53,522	44,660	730	-12%	17%
Arkansas	320	9	56,894	50,689	696	-29%	3%
Delaware	47	4	16,942	8,972	604	11%	8%
DC	105	0	13,639	10,835	604	-14%	30%
New Hampshire	33	0	7,140	6,450	429	-24%	0%
Kansas	888	3	38,546	1,535	429	47%	-8%
Oregon	218	3	25,155	4,634	420	-12%	-6%
Utah	249	5	49,364	41,164	390	-12%	-16%
Nebraska	N/A	5	32,047	24,155	383	-5%	23%
Idaho	212	7	30,057	12,867	314	-16%	-11%
West Virginia	42	0	9,315	7,385	179	-8%	8%
South Dakota	149	0	11,425	9,694	161	49%	-35%
North Dakota	124	1	10,000	8,206	137	39%	79%
Maine	21	0	4,357	3,762	131	43%	0%
Montana	60	1	6,489	4,842	91	-6%	-43%
Vermont	9	0	1,566	1,380	58	78%	-100%
Hawaii	169	2	6,769	2,143	49	70%	125%
Wyoming	25	0	3,603	2,927	37	6%	200%
Alaska	69	0	4,810	1,861	32	-5%	20%

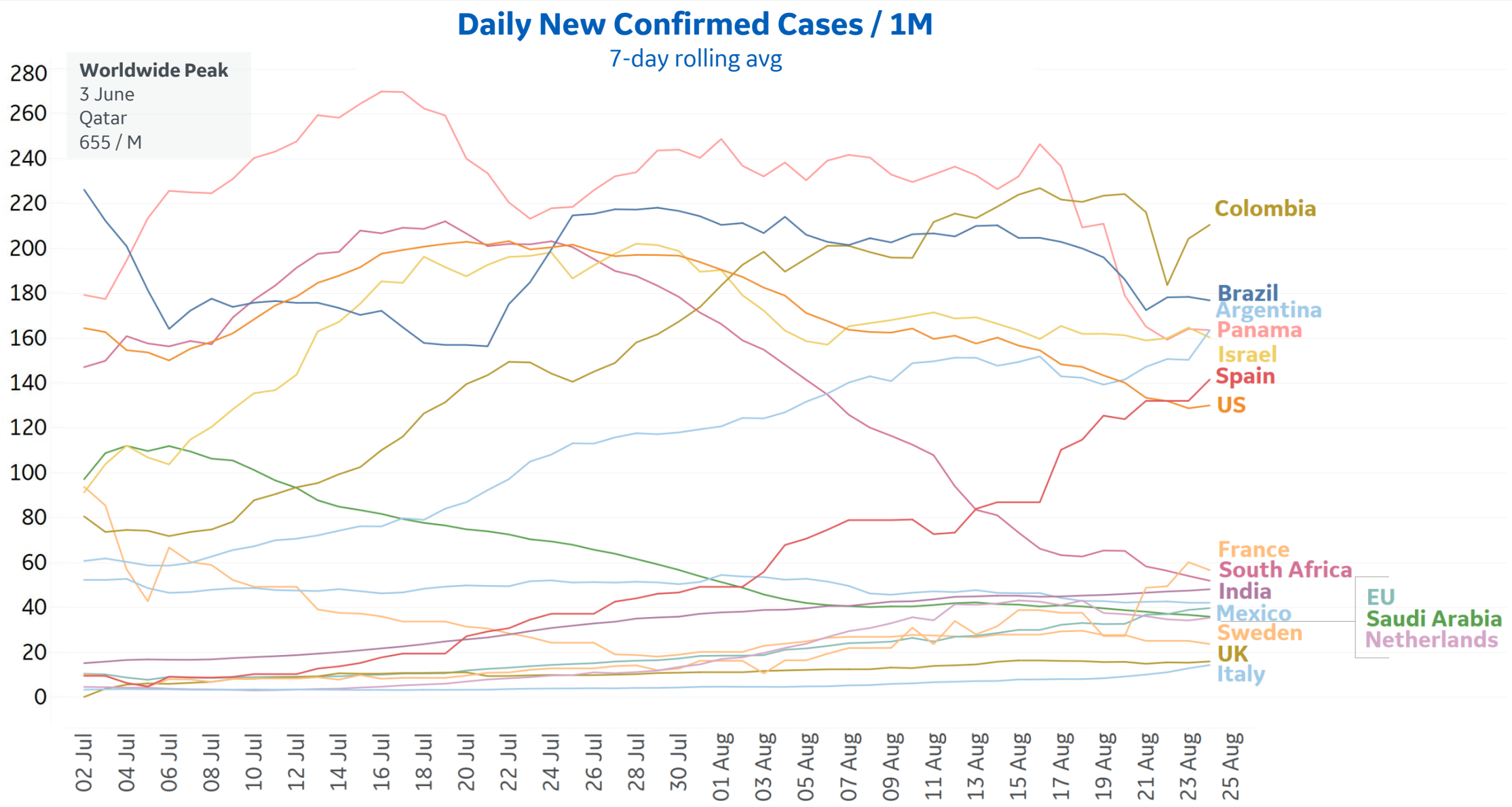
*Change from 14d ago:
Compares 14d-avgs. of Daily New Cases/Deaths
today with 14d-avgs. from 14d ago

Confirmed cases in **Alaska** increased 12% in the past week

Sorted by Raw Total Deaths
N/As and negative deaths are due to states
revising and updating case counts

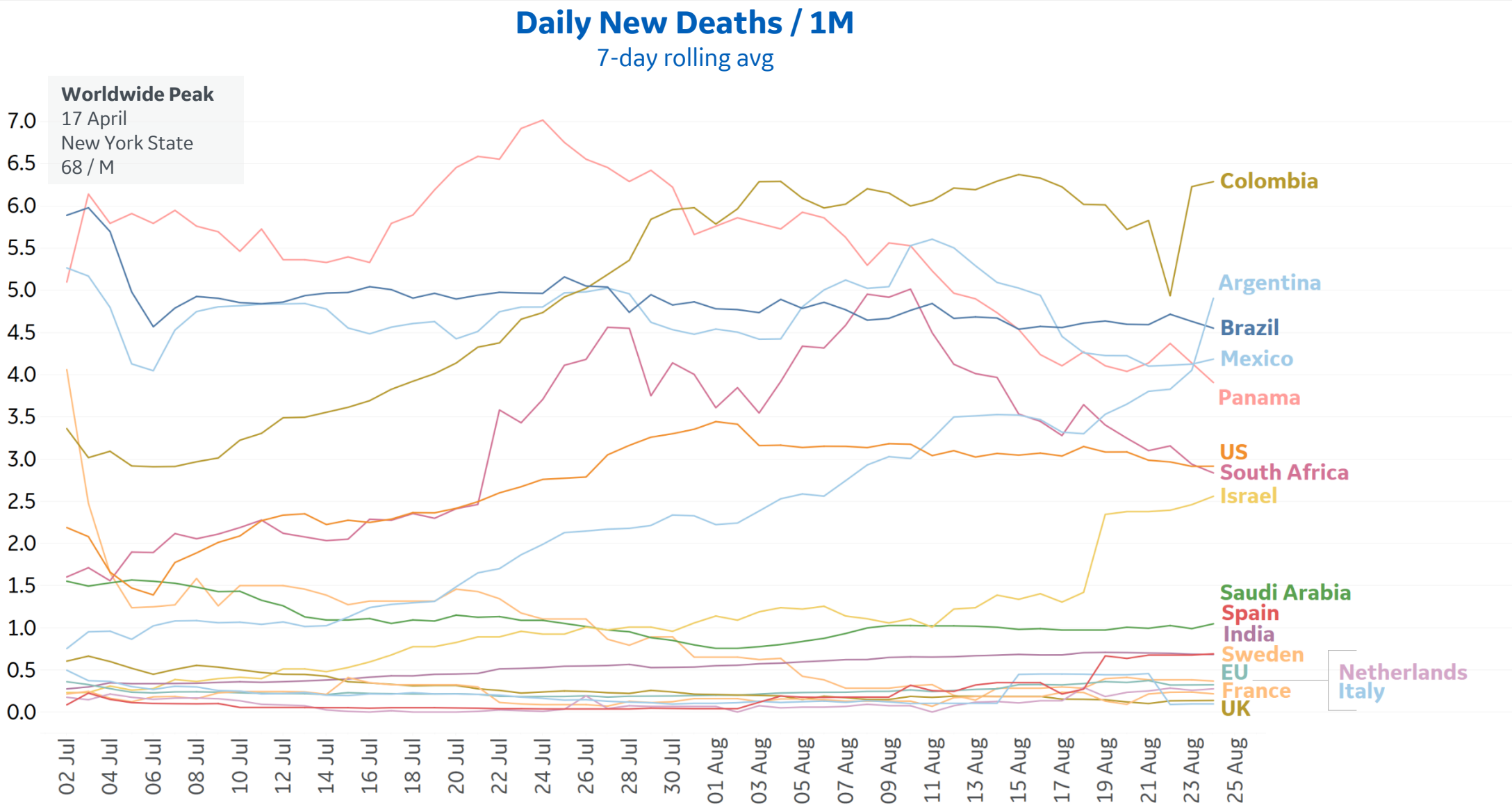


New Confirmed Cases in Select Countries





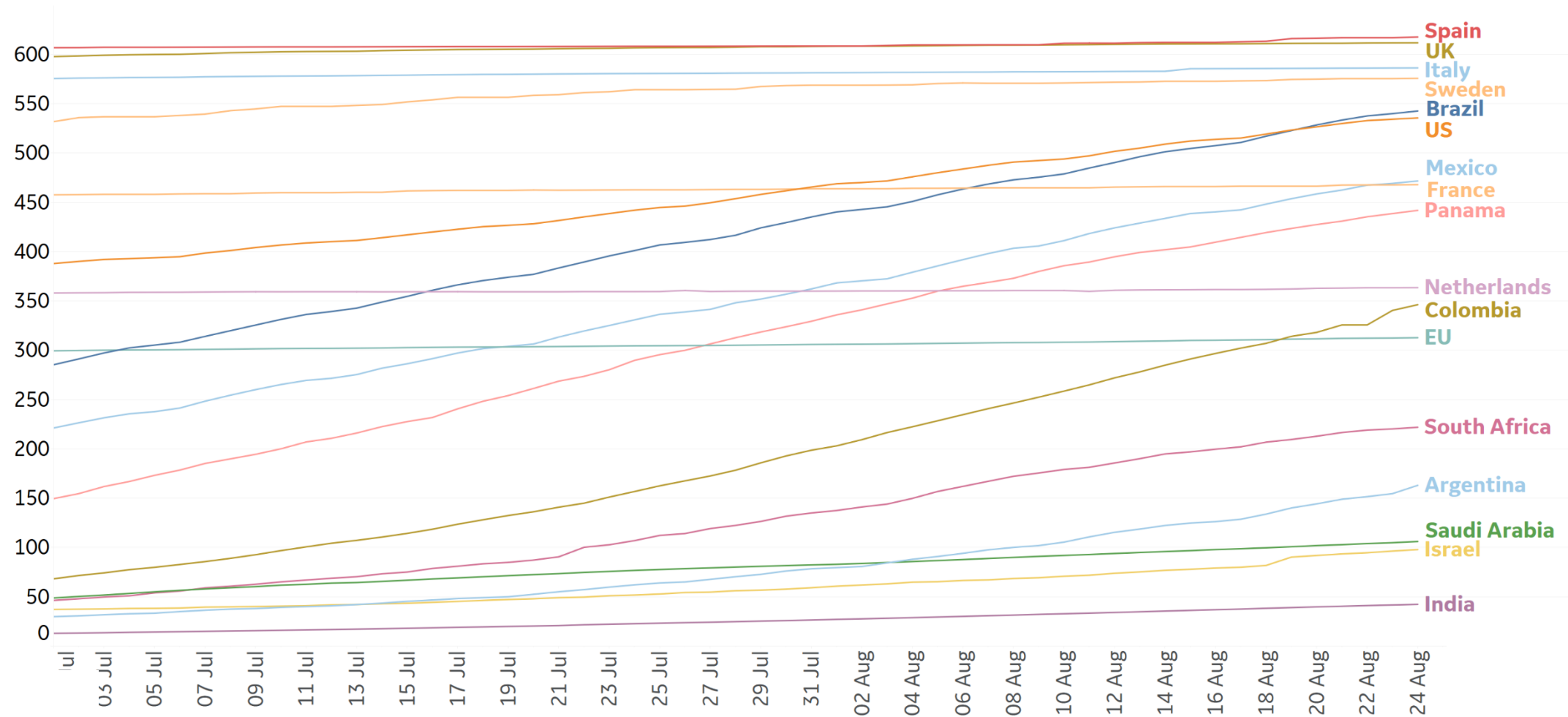
New Deaths in Select Countries





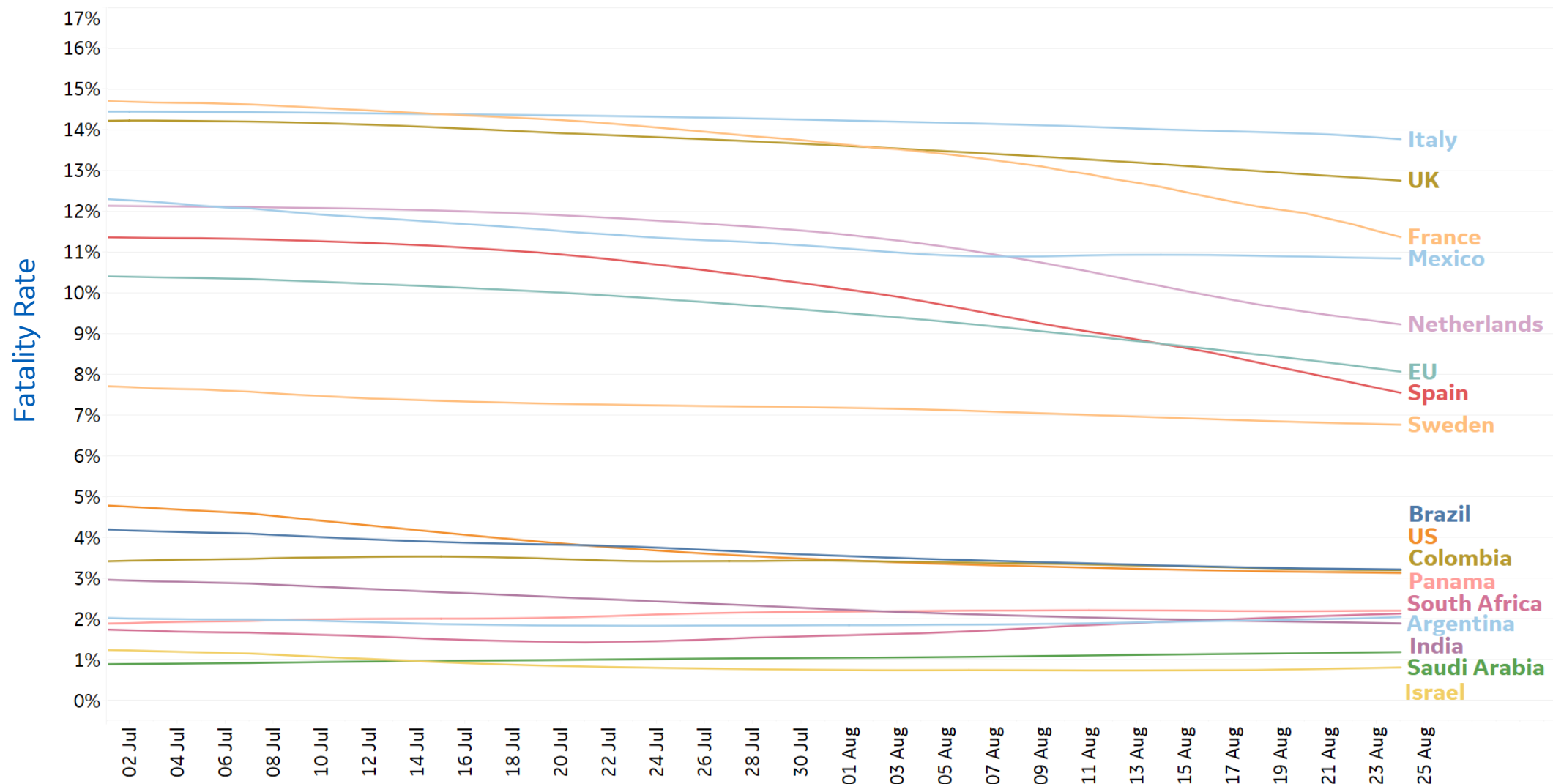
Cumulative Deaths in Select Countries

Cumulative Deaths / 1M





7-day rolling avg

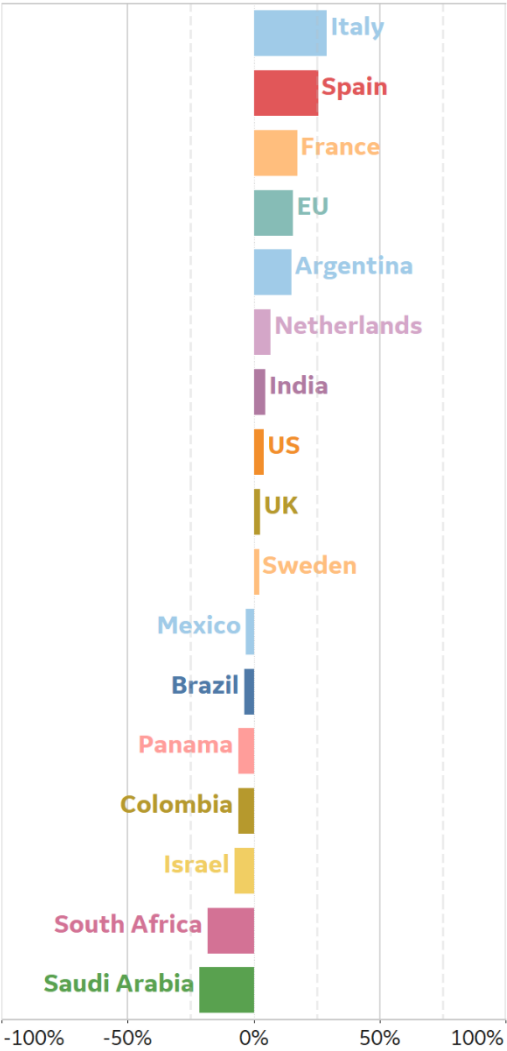




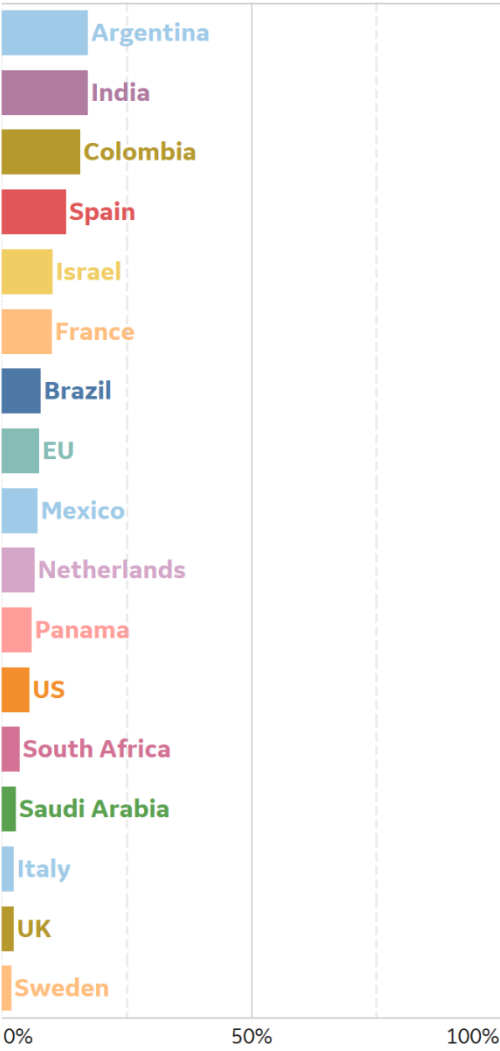
% Change in Case Volume in Select Countries

Over Previous 7 days

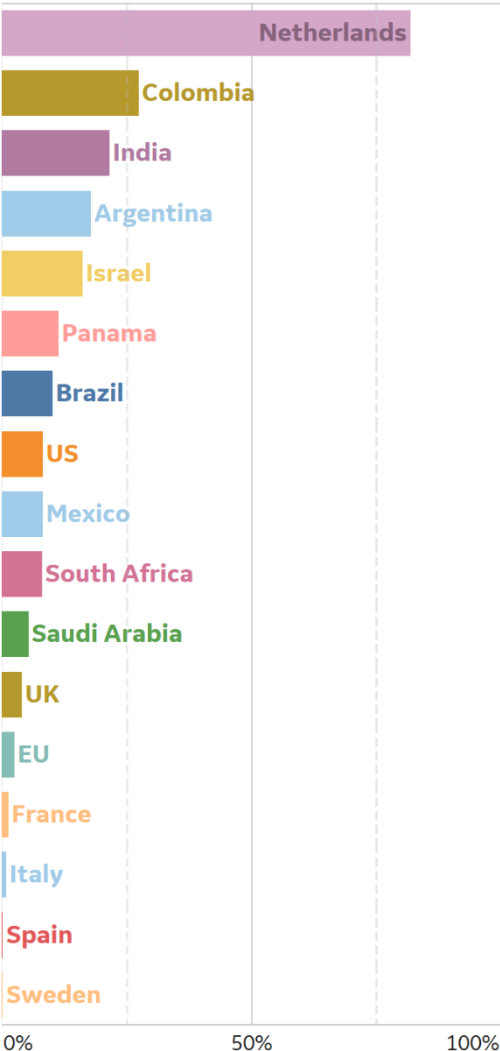
Active Cases



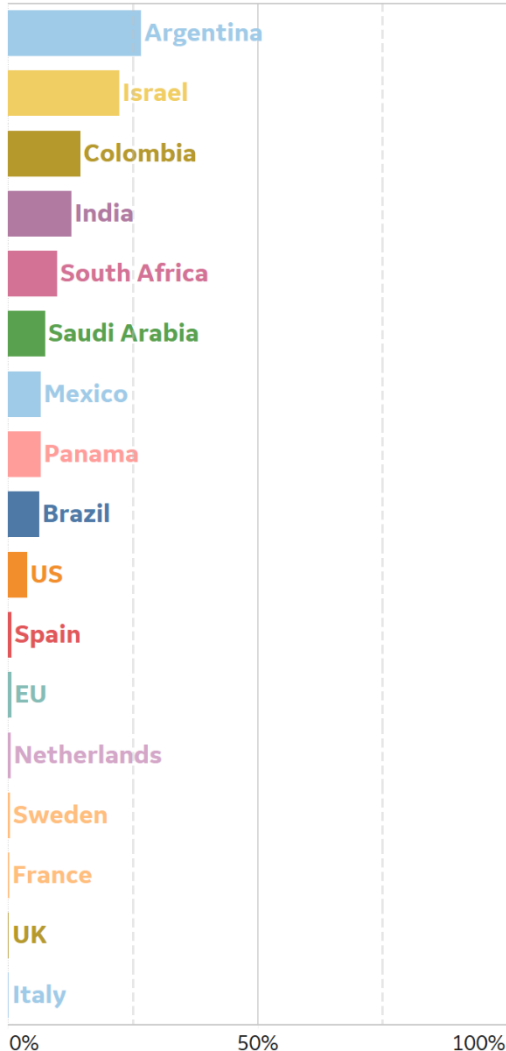
Confirmed Cases



Reported Recoveries



Reported Deaths

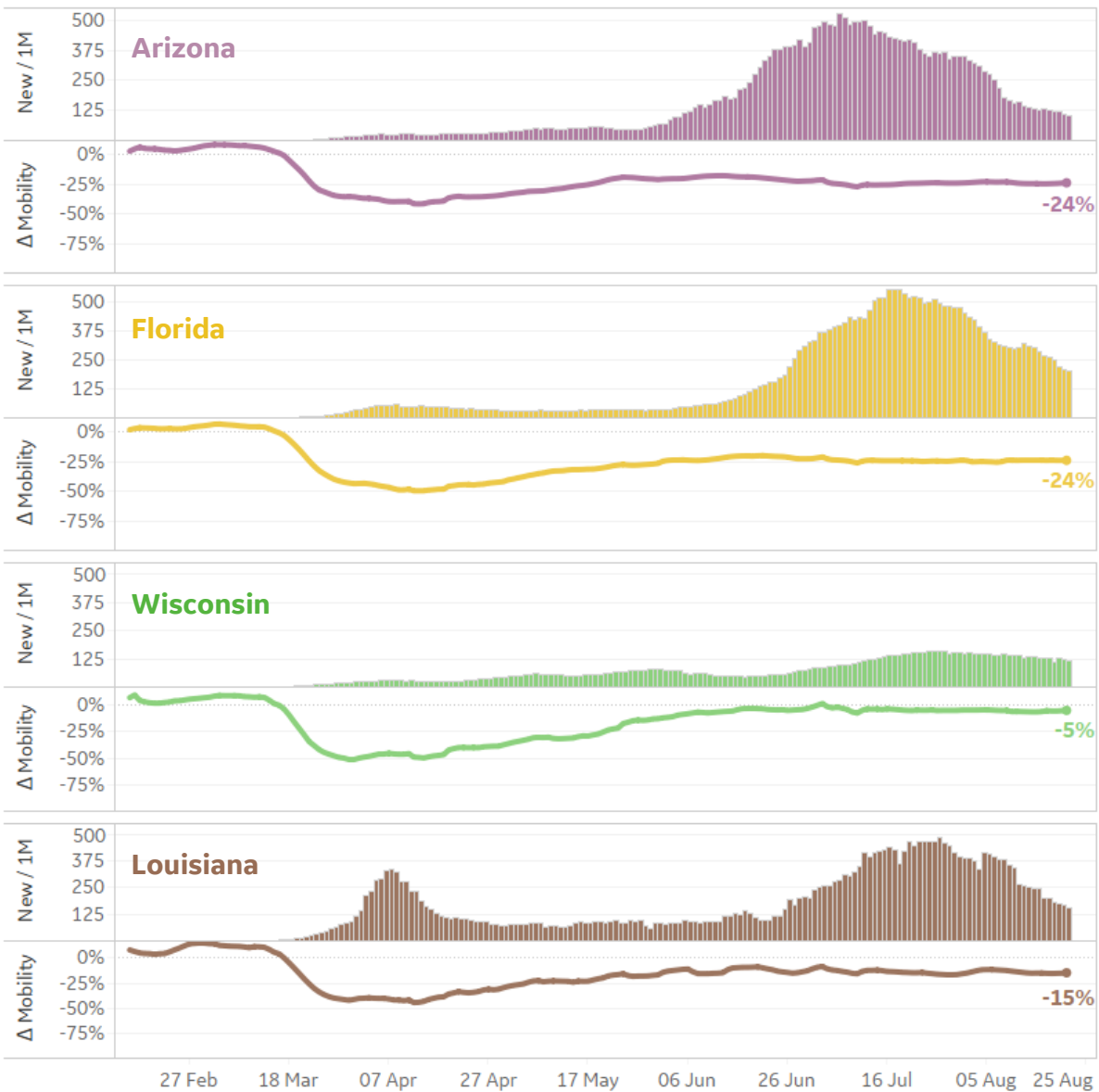
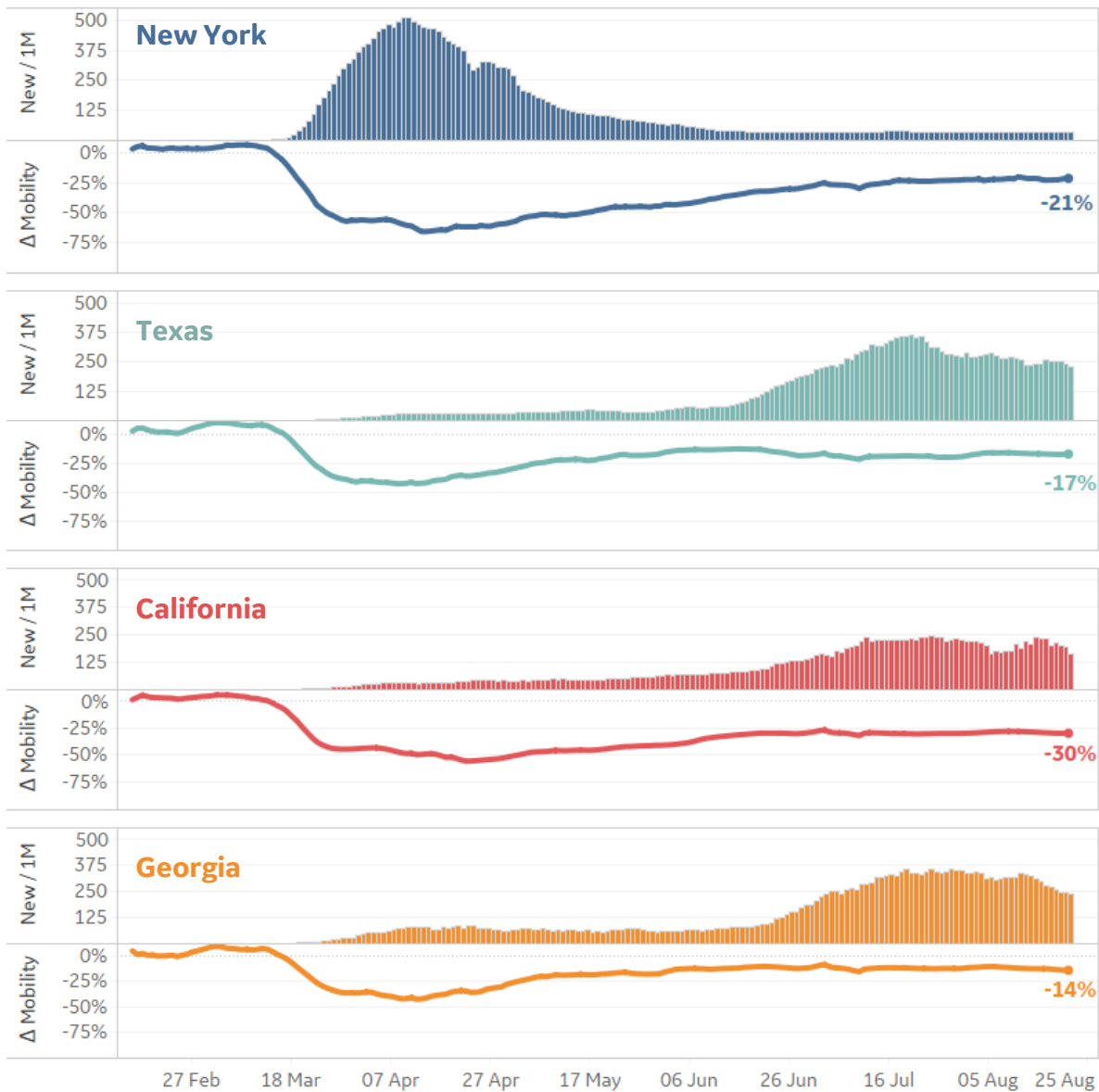




Feature: Mobility in Select US States

New / 1M = New confirmed cases / 1M, 7-day rolling avg

Δ Mobility = % Change in Retail and Recreational Mobility, compared to Jan 2020 Baseline (*Source: Google Maps Mobility Data*)



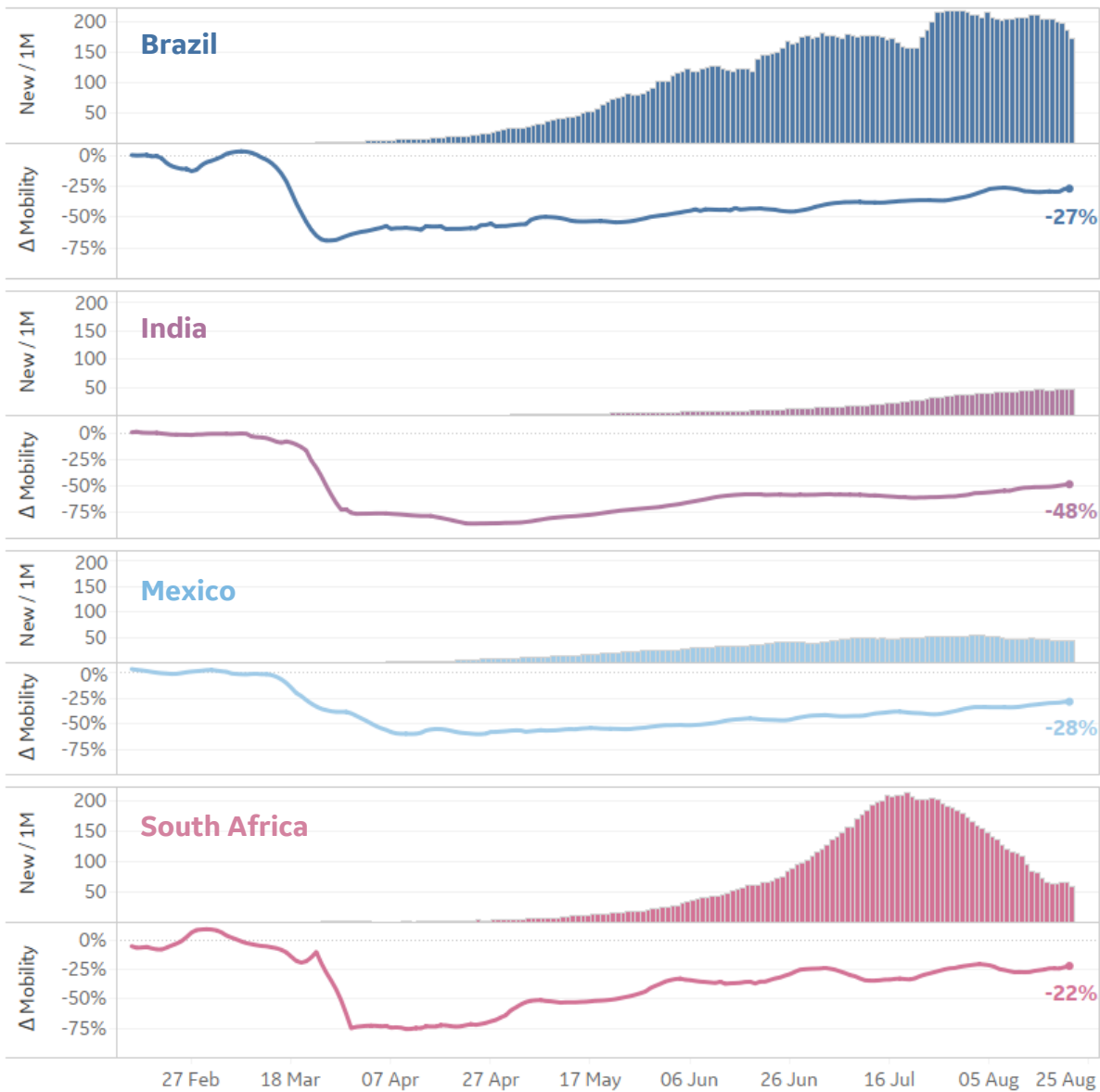
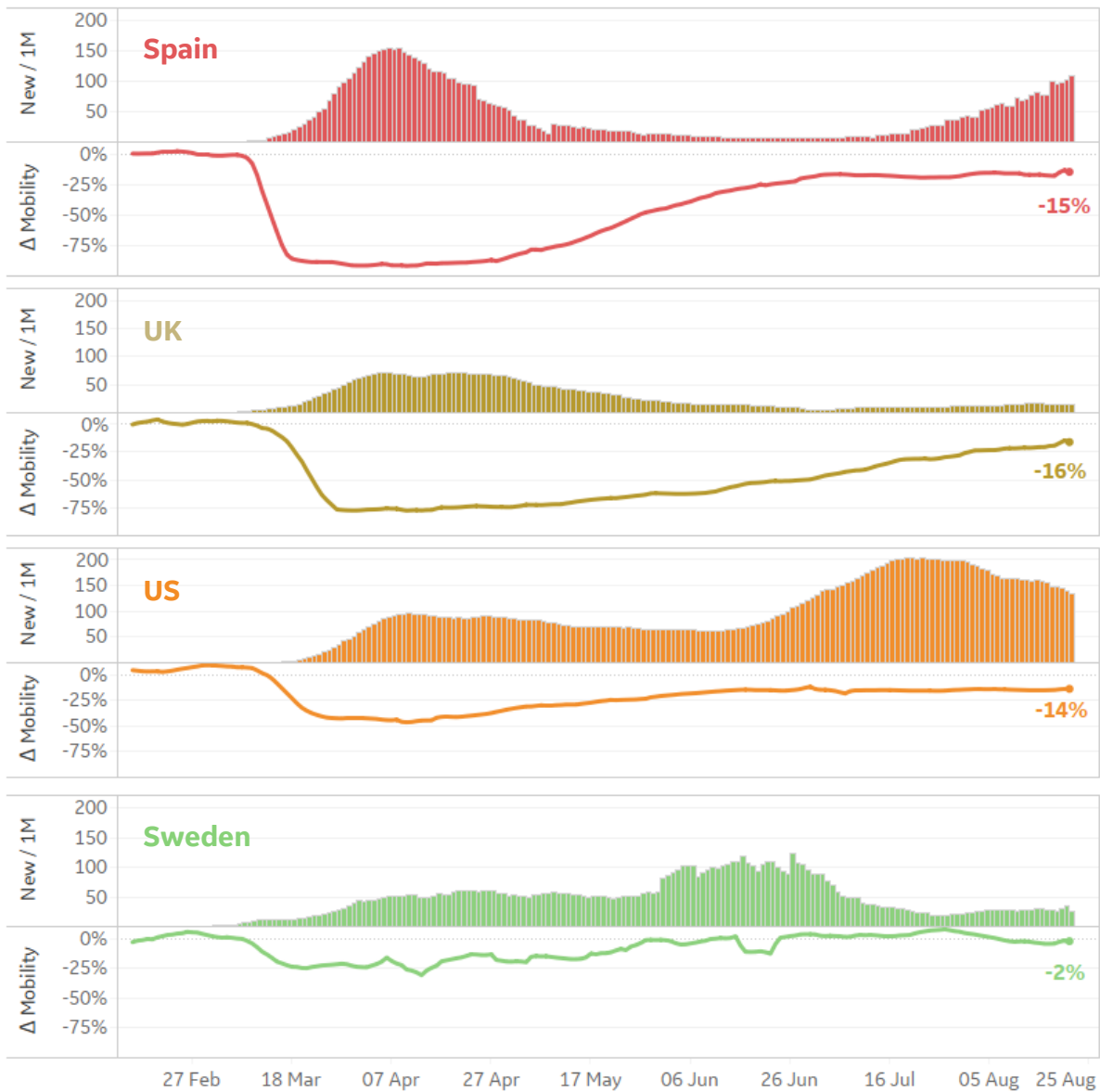


Feature: Mobility in Select Countries

Updated 25 August 2020, 3:30 GMT 13

New / 1M = New confirmed cases / 1M, 7-day rolling avg

Δ Mobility = % Change in Retail and Recreational Mobility, compared to Jan 2020 Baseline (*Source: Google Maps Mobility Data*)





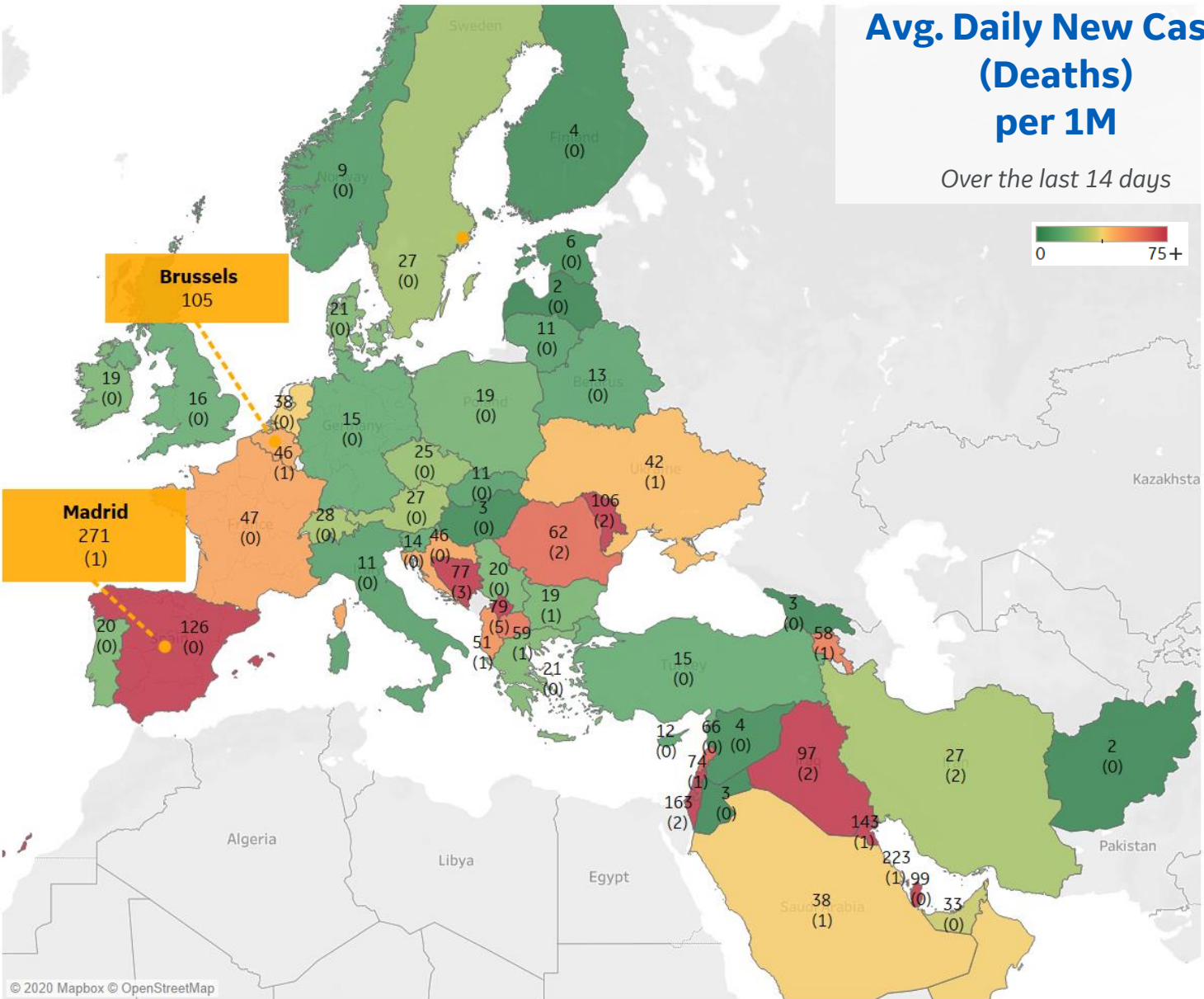
Per 1M in Region

	Today	Change
Active Cases	1,380	+2%
Confirmed	48 new	+1%
Deaths	1 new	+0.2%
Recovered	19 new	+1%

Most Daily New Cases / 1M

Bahrain	223
Israel	163
Kuwait	143
Spain	126
Moldova	106
Qatar	99
Iraq	97
Kosovo	79
Bos. and Herz.	77
Romania	62

* Excludes regions with population < 1M





Per 1M in Region

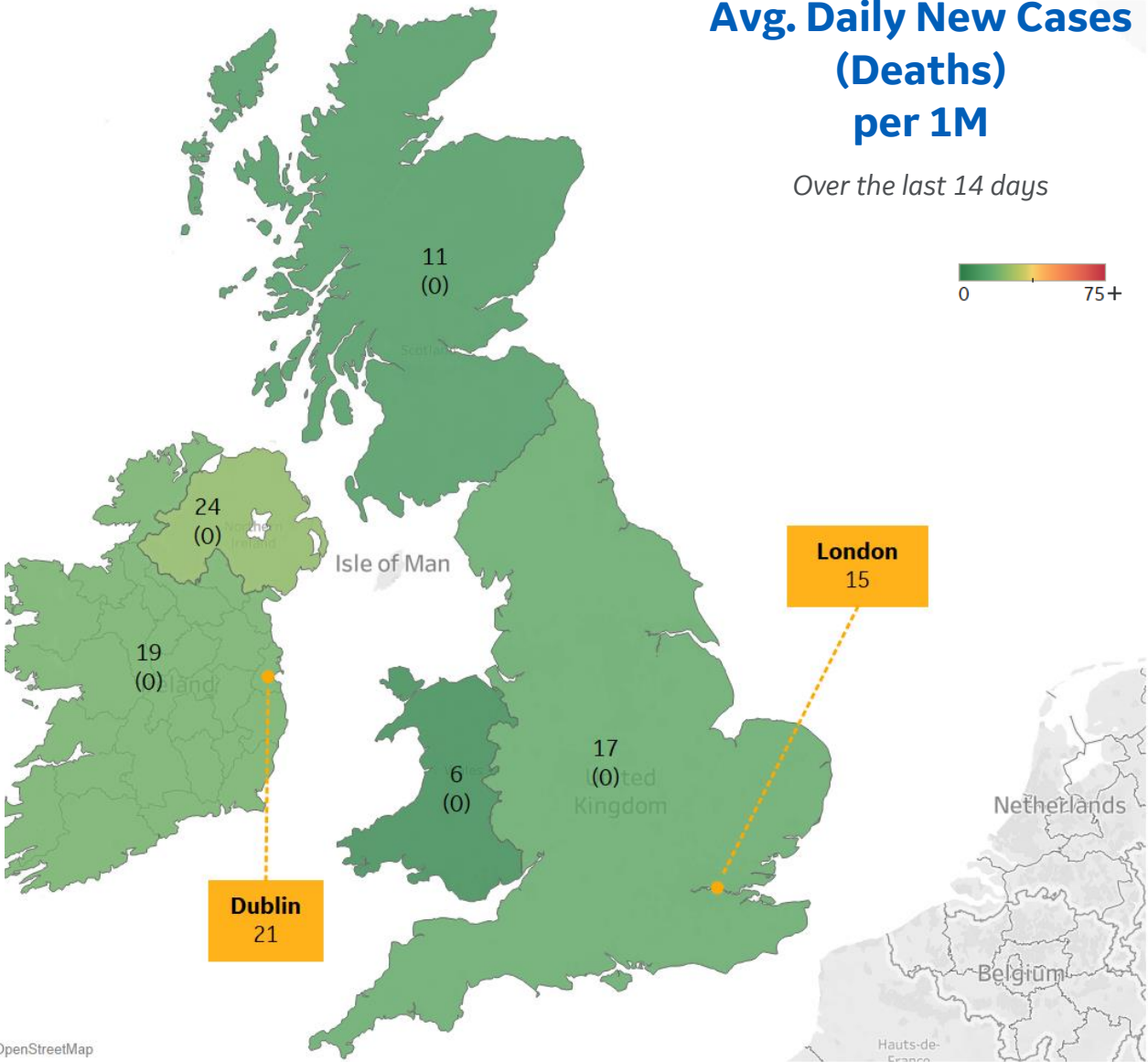
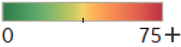
	Today	Change
Active Cases	3,962	+0.4%
Confirmed	15 new	+0.3%
Deaths	0.1 new	+0.01%
Recovered	0 new	0%

Most Daily New Cases / 1M

Northern Ireland	24
Ireland	19
England	17
Scotland	11
Wales	6

Avg. Daily New Cases (Deaths) per 1M

Over the last 14 days





Mexico

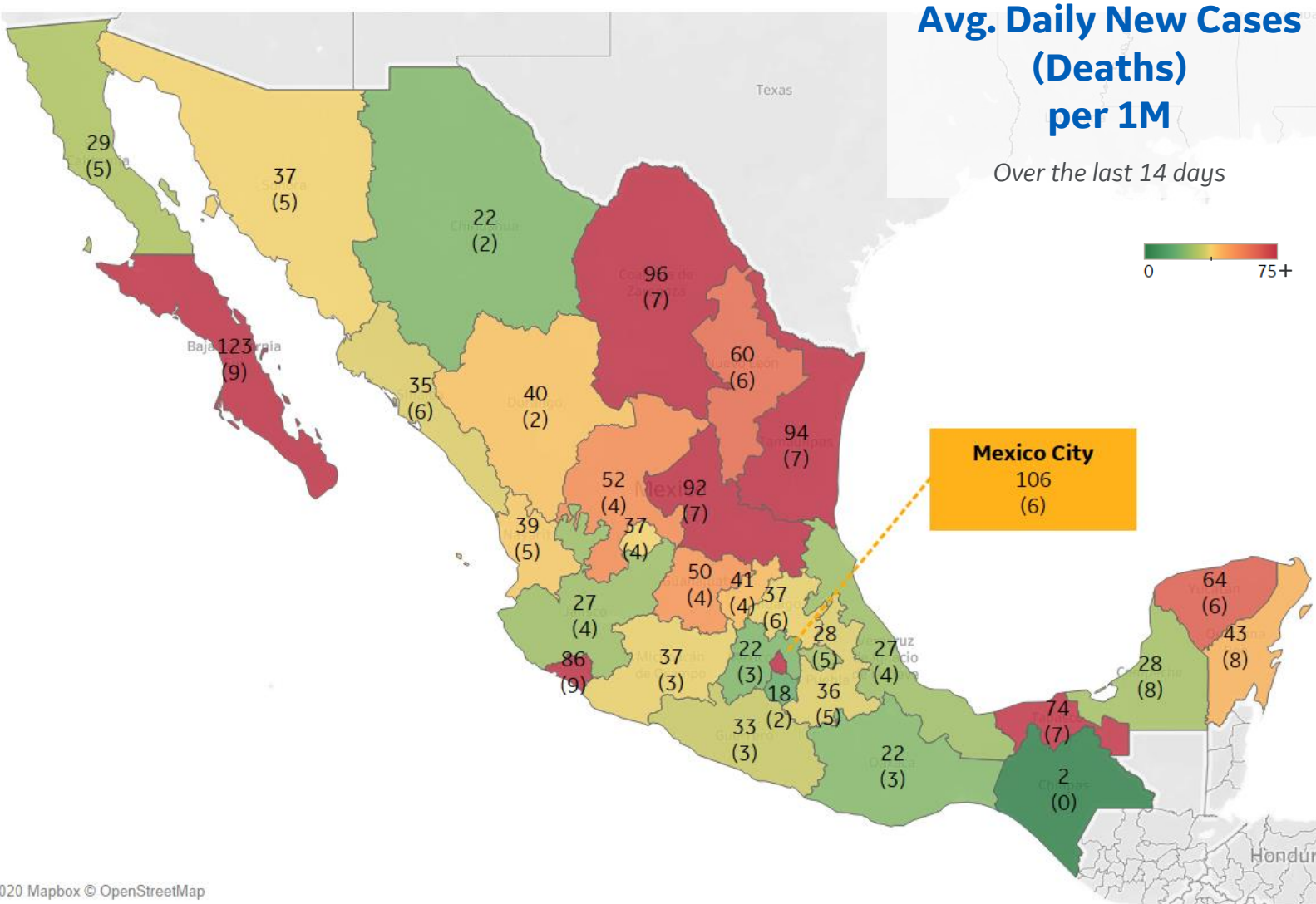


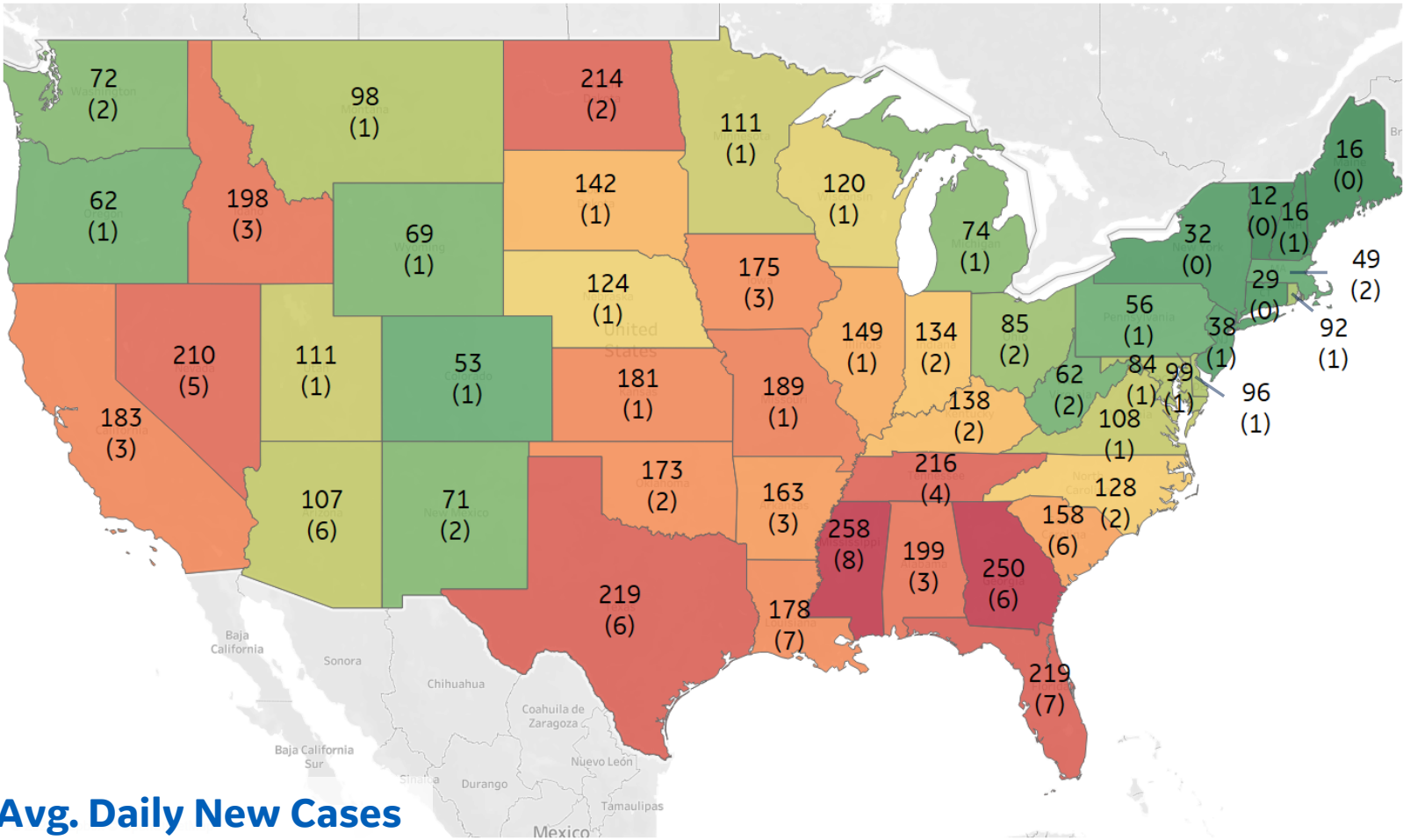
Per 1M in Region

	Today	Change
Active Cases	285	-12%
Confirmed	27 new	+1%
Deaths	2 new	+0.5%
Recovered	63 new	+2%

Most Daily New Cases / 1M

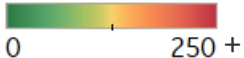
Baja California Sur	123
Distrito Federal	106
Coahuila	96
Tamaulipas	94
San Luis Potosí	92
Colima	86
Tabasco	74
Yucatán	64
Nuevo León	60
Zacatecas	52





**Avg. Daily New Cases
(Deaths)
per 1M**

Over the last 14 days



Note: Scale different from other pages

Top 10 by New Confirmed

Avg New Confirmed Cases / 1M

Mississippi	258
Georgia	250
Florida	219
Texas	219
Tennessee	216
North Dakota	214
Nevada	210
Alabama	199
Idaho	198
Missouri	189

Top 10 by New Deaths

Avg New Deaths / 1M

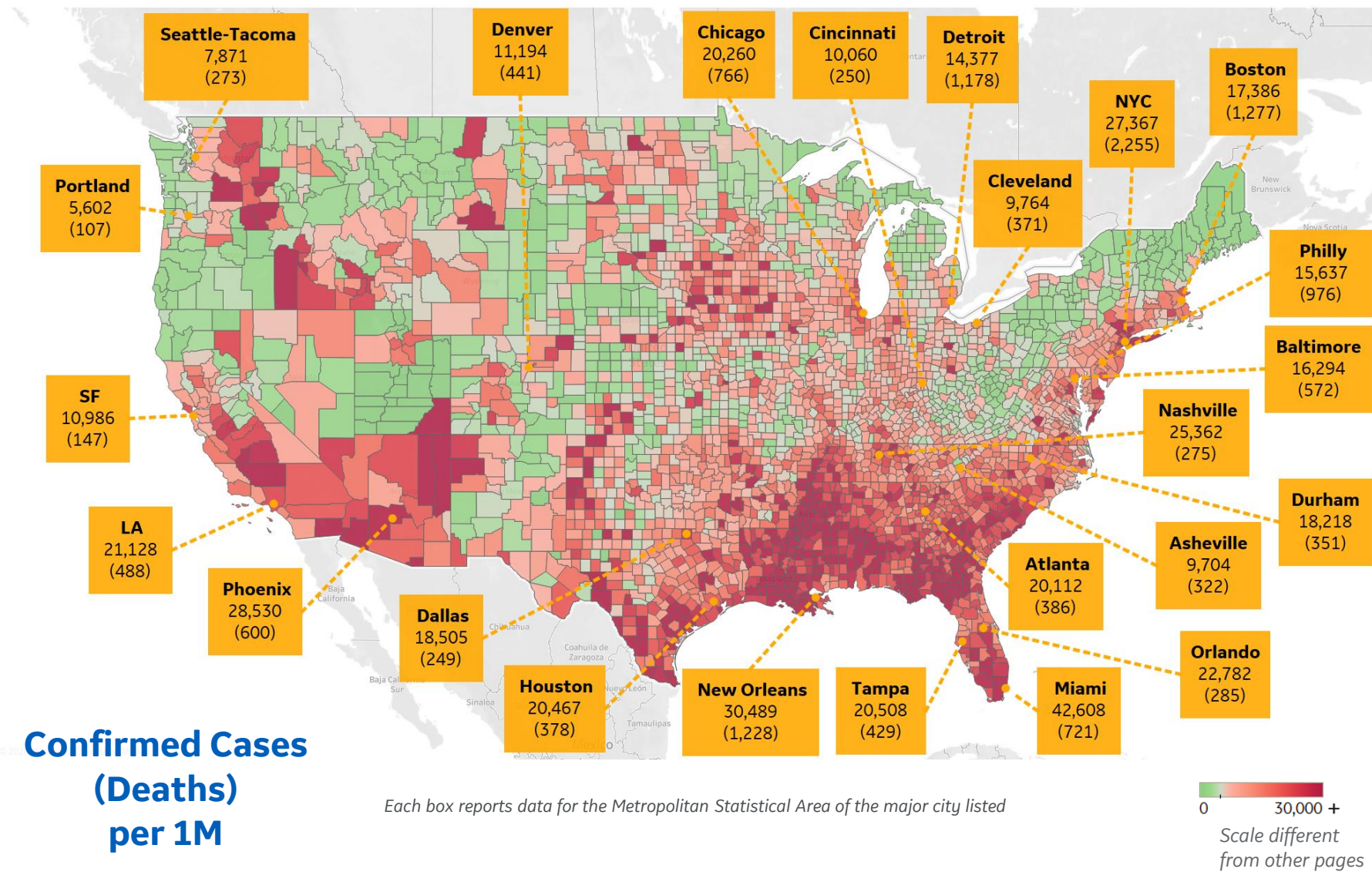
Mississippi	8
Louisiana	7
Florida	7
South Carolina	6
Georgia	6
Texas	6
Arizona	6
Nevada	5
Tennessee	4
Arkansas	3



US by County & Metro, Total to Date

Updated 25 August 2020, 3:30 GMT

18



Top 10 Northeast Counties

Total Confirmed Cases / 1M

Rockland County, NY	43,399
Westchester County, NY	37,943
Passaic County, NJ	36,242
Nassau County, NY	32,636
Union County, NJ	30,542
Suffolk County, NY	30,150
Hudson County, NJ	29,822
Orange County, NY	29,467
New York City*	27,868
Suffolk County, MA	27,100

Top 10 Other US Counties

Total Confirmed Cases / 1M

Miami-Dade County, FL	56,171
Nueces County, TX	50,183
Cameron County, TX	45,432
Yakima County, WA	43,169
Jefferson Parish, LA	37,390
Webb County, TX	36,739
Broward County, FL	35,530
Escambia County, FL	34,029
Davidson County, TN	32,869
Charleston County, SC	32,583

Note: Includes counties ≥ 250K population
* New York City counties aggregated into one reporting area



Central & South America

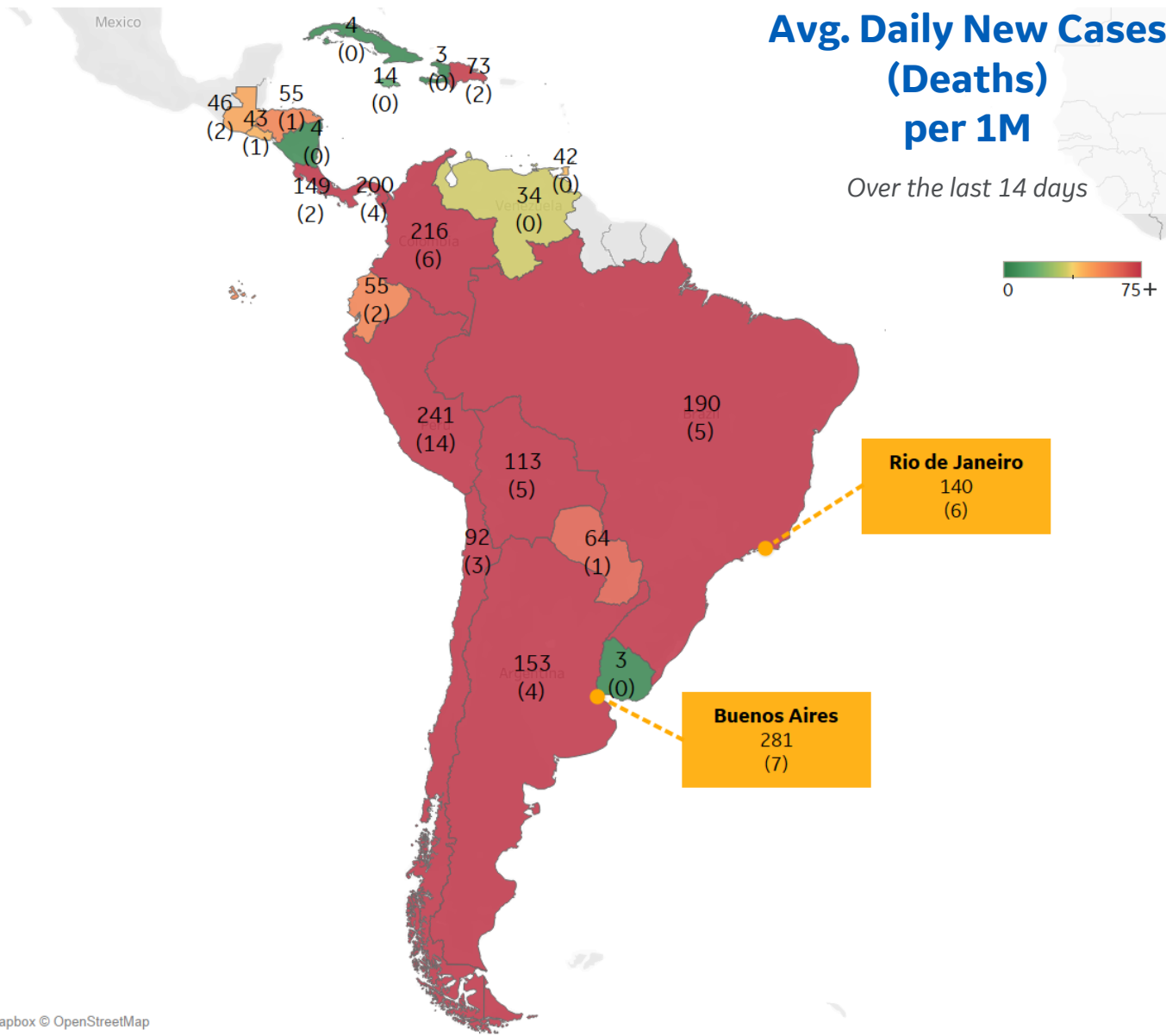
Per 1M in Region

	Today	Change
Active Cases	2,266	+0%
Confirmed	103 new	+1%
Deaths	3 new	+1%
Recovered	103 new	+1%

Most Daily New Cases / 1M

Peru	241
Colombia	216
Panama	200
Brazil	190
Argentina	153
Costa Rica	149
Bolivia	113
Chile	92
Dom. Rep.	73
Paraguay	64

* Excludes regions with population < 1M





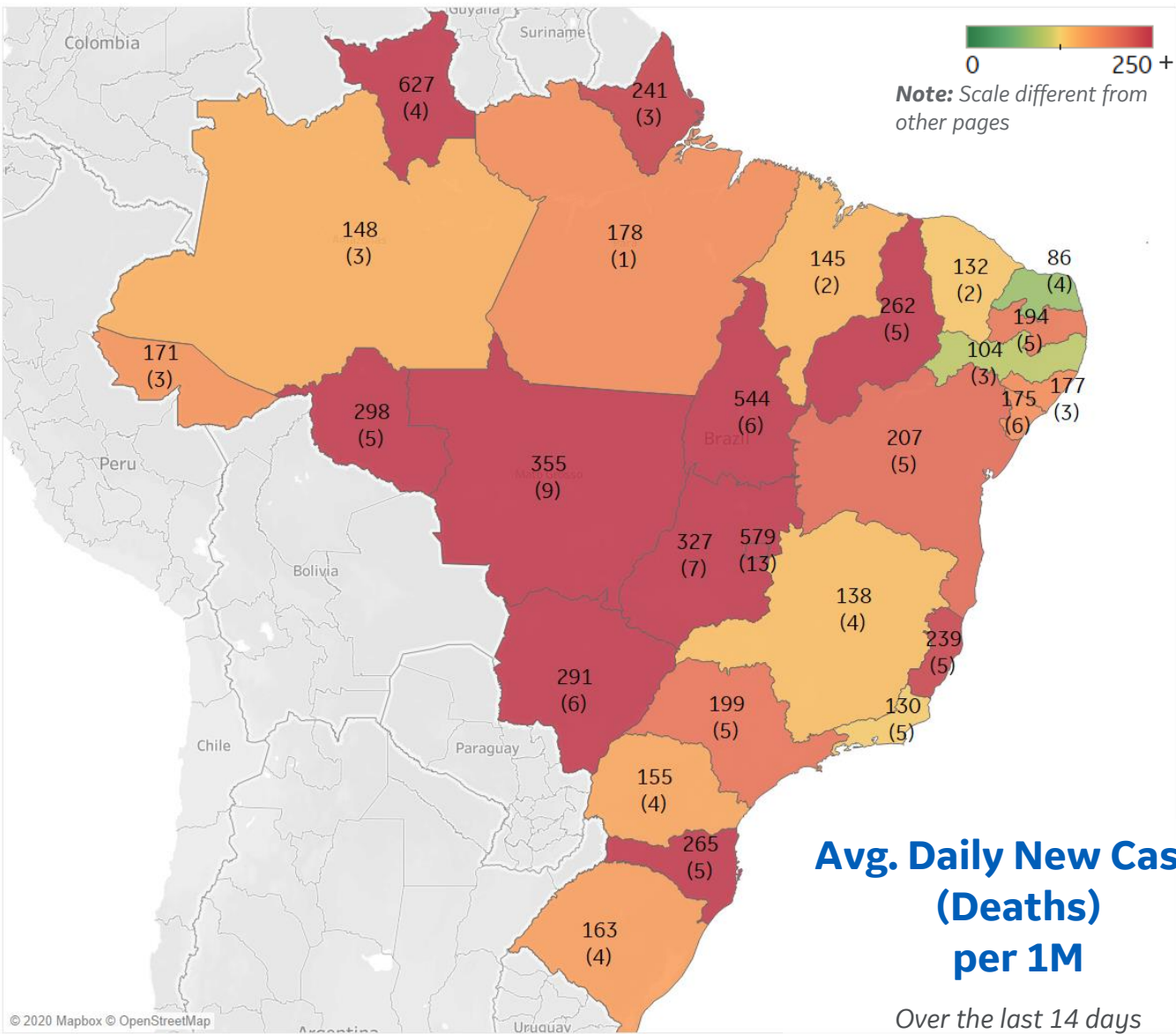
Per 1M in Region

	Today	Change
Active Cases	2,500	-2%
Confirmed	80 new	+0%
Deaths	3 new	+0.5%
Recovered	134 new	+1%

Most Daily New Cases / 1M

Distrito Federal	579
Tocantins	544
MatoGrosso	355
Goiás	327
Rondônia	298
MatoGrosso d..	291
Santa Catarina	265
Piauí	262
Espírito Santo	239
Bahia	207

* Excludes regions with population < 1M





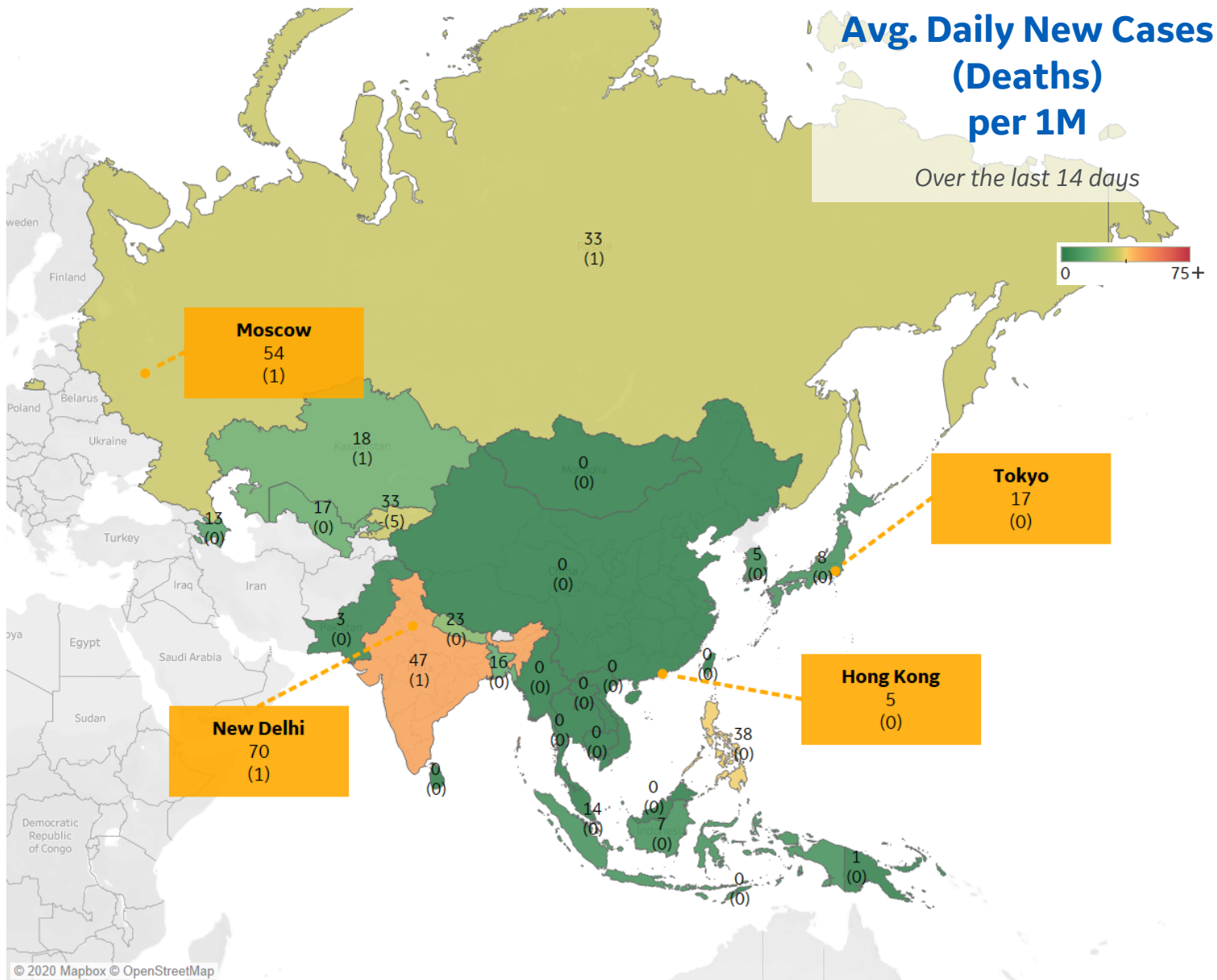
Per 1M in Region

	Today	Change
Active Cases	264	+0%
Confirmed	18 new	+1%
Deaths	0.2 new	+1%
Recovered	18 new	+2%

Most Daily New Cases / 1M

India	47
Philippines	38
Russia	33
Kyrgyzstan	33
Nepal	23
Kazakhstan	18
Uzbekistan	17
Bangladesh	16
Singapore	14
Azerbaijan	13

* Excludes regions with population < 1M





Per 1M in Region

	Today	Change
Active Cases	162	-4%
Confirmed	5 new	+0.5%
Deaths	0.3 new	+1%
Recovered	12 new	+2%

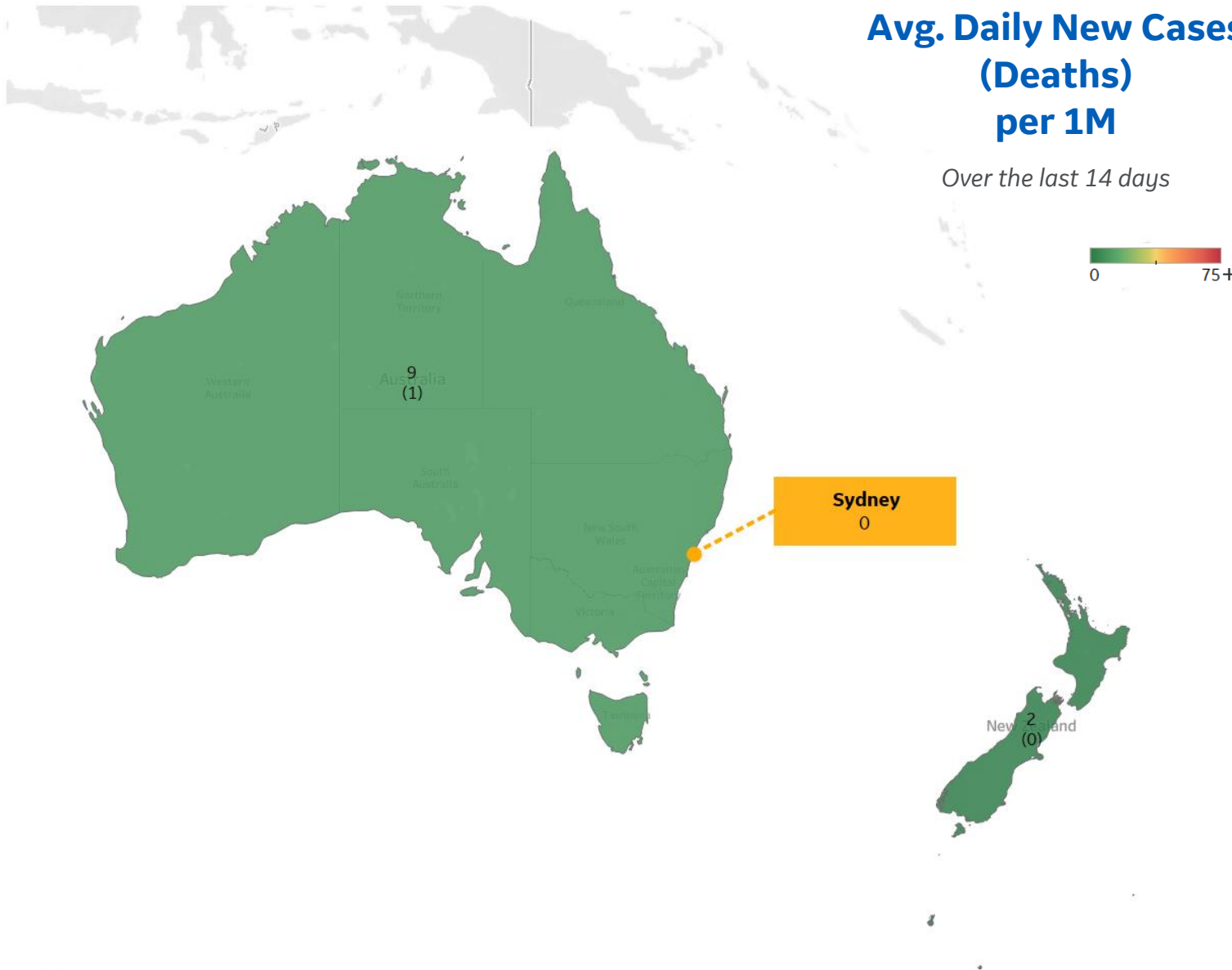
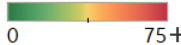
Most Daily New Cases / 1M

Australia	9
New Zealand	2

* Excludes regions with population < 1M

Avg. Daily New Cases (Deaths) per 1M

Over the last 14 days





	Today	Change
Active Cases	184	-3.2%
Confirmed	6 new	+1%
Deaths	0.2 new	+1%
Recovered	12 new	+2%

Namibia	82
Eswatini	61
South Africa	58
Libya	53
Gambia	40
Morocco	37
Botswana	15
Gabon	13
Ethiopia	12
Zambia	11

Avg. Daily New Cases (Deaths) per 1M
Over the last 14 days

0 75+

Lagos
8
(0)

Johannesburg / Pretoria
75
(4)



Sources



** Per 1M = Per 1 Million Population unless otherwise noted

Johns Hopkins Coronavirus Resource Center:

<https://coronavirus.jhu.edu/map.html>

Worldometer Coronavirus Reporting:

<https://www.worldometers.info/coronavirus/>

Public Health England:

<https://www.gov.uk/government/publications/covid-19-track-coronavirus-cases>

US Department of Homeland Security, Homeland Infrastructure Foundation-Level Data:

<https://hifld-geoplatform.opendata.arcgis.com/datasets/hospitals>

City of New York, NYC Health:

<https://www1.nyc.gov/site/doh/covid/covid-19-data.page>

Chicago Coronavirus Latest Data:

<https://www.chicago.gov/city/en/sites/covid-19/home/latest-data.html>

National Health Commission of the PRC:

<http://www.nhc.gov.cn/xcs/yqtb/202003/bf66696029ba420098164607240074f8.shtml>

Korean Centers for Disease Control and Prevention:

http://www.cdc.go.kr/cdc_eng/

CDC, Severe Outcomes Among Patients with Coronavirus Disease 2019 (COVID-19):

<https://www.cdc.gov/mmwr/volumes/69/wr/mm6912e2.htm>

Italian Department of Civil Protection, COVID Monitoring:

<http://opendatadpc.maps.arcgis.com/apps/opsdashboard/index.html#/b0c68bce2cce478eaac82fe38d4138b1>

The COVID Tracking Project:

<https://covidtracking.com/data/>

UK Office for National Statistics

<https://www.ons.gov.uk/peoplepopulationandcommunity/birthsdeathsandmarriages/deaths/bulletins/deathsregisteredweeklyinenglandandwalesprovisional/weekending24april2020>

WHO Europe, Surveillance Report:

<http://www.euro.who.int/en/health-topics/health-emergencies/coronavirus-covid-19/weekly-surveillance-report>

WHO Europe, Principles for Transition:

<http://www.euro.who.int/en/media-centre/sections/statements/2020/statement-transition-to-a-new-normal-during-the-covid-19-pandemic-must-be-guided-by-public-health-principles>

COVID-19 Information for Switzerland:

<https://www.corona-data.ch/>

Italian Ministry of Health:

<http://www.salute.gov.it/portale/nuovocoronavirus/dettaglioContenutiNuovoCoronavirus.jsp?lingua=italiano&id=5351&area=nuovoCoronavirus&menu=vuoto>

New South Wales Government:

<https://www.health.nsw.gov.au/Infectious/diseases/Pages/covid-19-latest.aspx>

Provincial Health Services Authority of Canada. BC Center for Disease Control:

<http://www.bccdc.ca/about/news-stories/stories/2020/information-on-novel-coronavirus>

Coronavirus Cases in Japan by Prefecture, Nippon Communications Foundation:

<https://www.nippon.com/en/japan-data/h00657/coronavirus-cases-in-japan-by-prefecture.html>

Secretary of Health, Mexico:

<https://www.gob.mx/salud/en>

OECD Economic Outlooks, Statistics:

https://www.oecd-ilibrary.org/economics/data/oecd-economic-outlook-statistics-and-projections_eo-data-en

Public Health Authority of Sweden:

<https://www.folkhalsomyndigheten.se/smittskydd-beredskap/utbrott/aktuella-utbrott/covid-19/bekraftade-fall-i-sverige>

National Public Health Agency of France:

<https://www.santepubliquefrance.fr/regions/ile-de-france/documents/bulletin-regional/2020/covid-19-point-epidemiologique-en-ile-de-france-du-23-avril-2020>

Florida Department of Health, COVID-19 Response:

<https://floridahealthcovid19.gov>

CDC:

<https://www.cdc.gov/covid-data-tracker/index.html#demographics>

CDC Provisional COVID19 Deaths Counts

<https://data.cdc.gov/NCHS/Provisional-COVID-19-Death-Counts-by-Sex-Age-and-S/9bhg-hcku>

Johns Hopkins Coronavirus Resource Center:

<https://coronavirus.jhu.edu/map.html>

CIA World Factbook:

<https://www.cia.gov/library/publications/resources/the-world-factbook/>

Google Mobility Data:

<https://www.google.com/covid19/mobility/>