

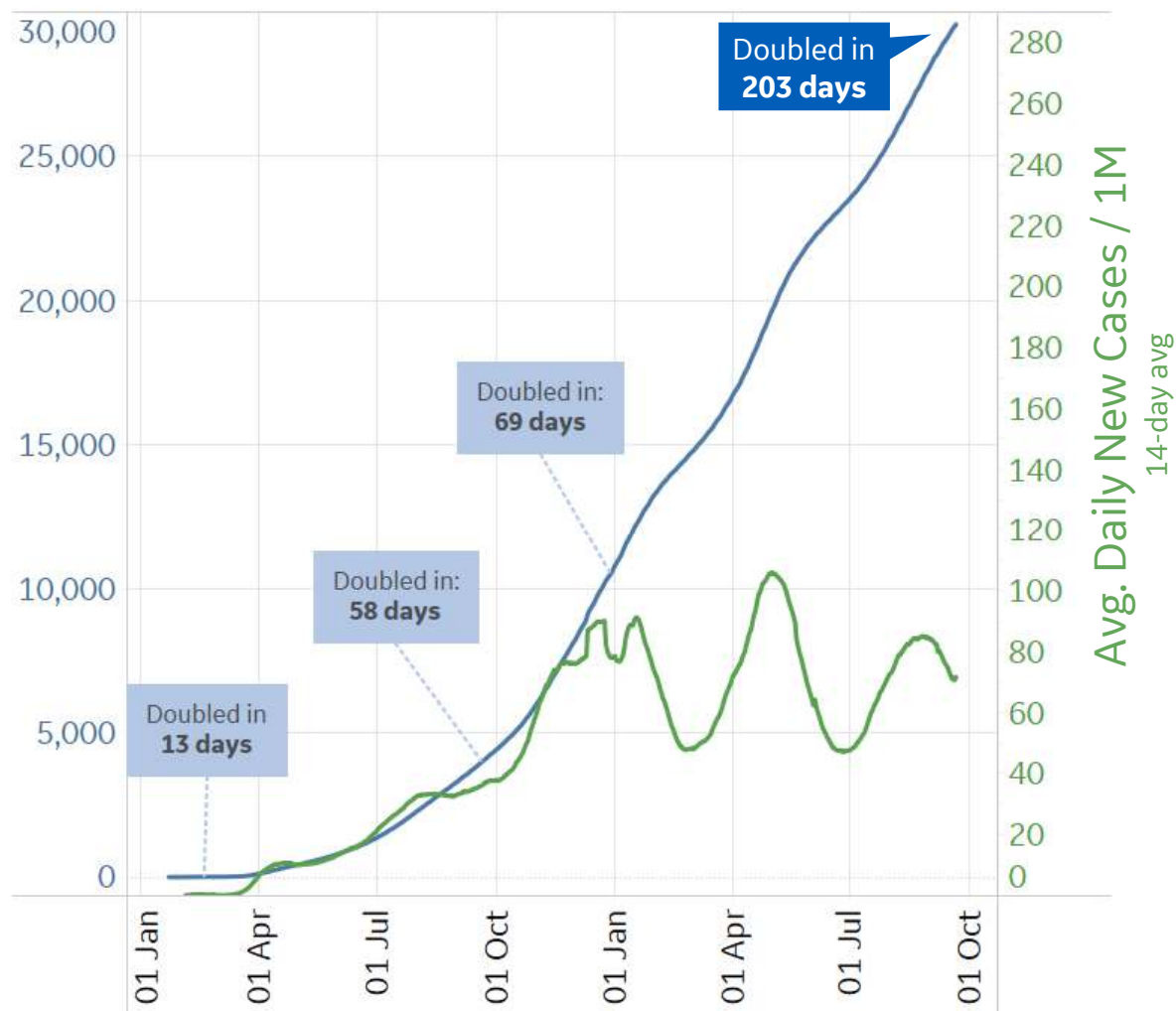


# Global Confirmed & Active Cases



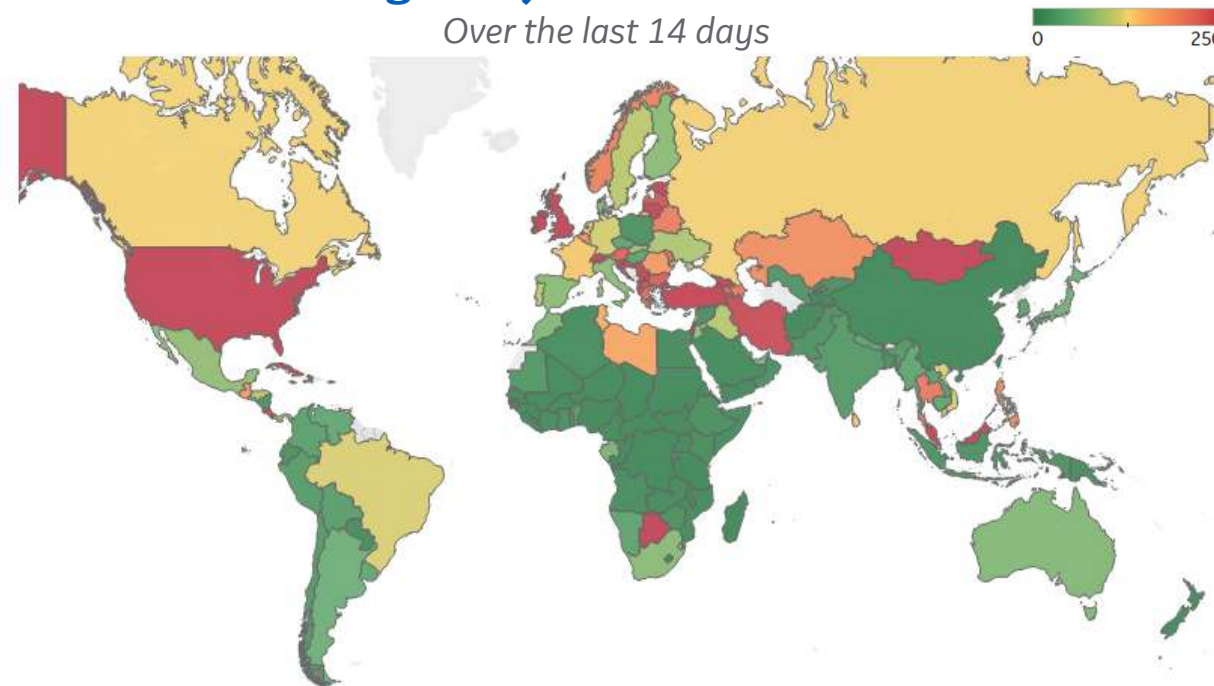
## Trend since 22 Jan 2020

Total Confirmed Cases / 1M



## Avg. Daily New Cases / 1M

Over the last 14 days



Per 1M:	New Today	Change from 30 days ago
Active	68	+8%
Confirmed	70	+8%
Deaths	1	+6%
Recovered	55	+9%
Worldwide Survival Rate	To Date 97.9%	Last 30 Days 98.4%

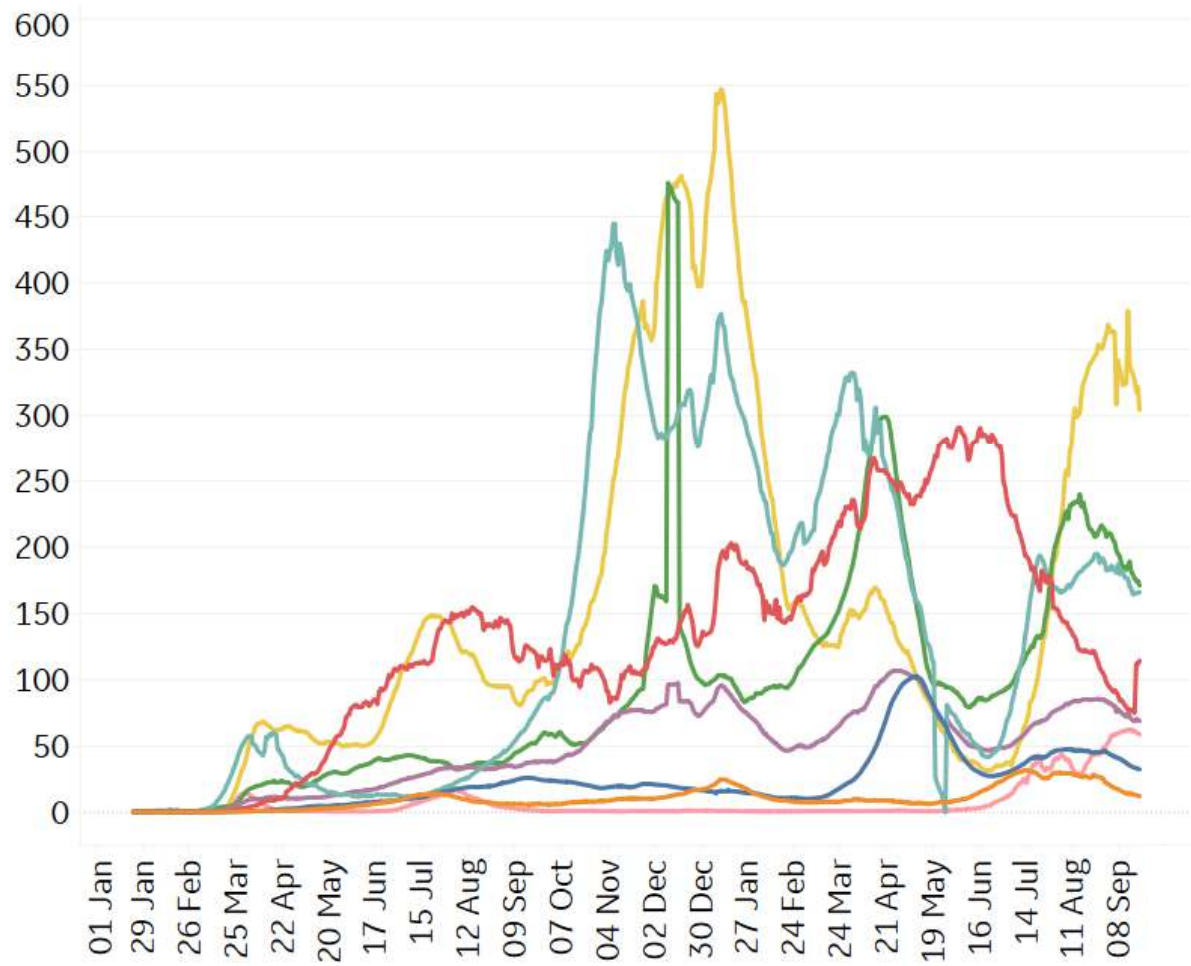


# New Confirmed Cases & New Deaths

Key World North America Europe Middle East Cent & South America Asia Africa Oceania

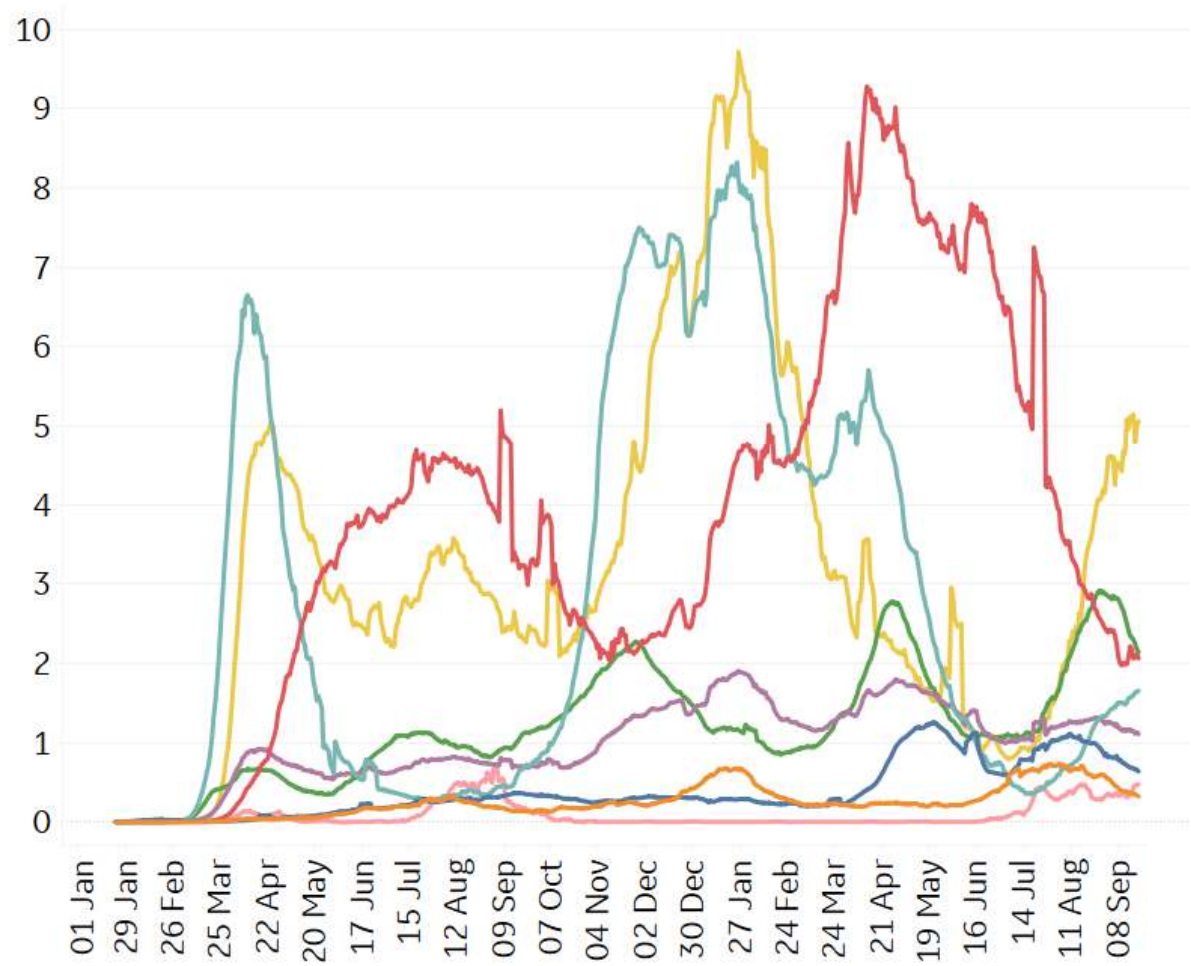
## New Confirmed Cases / 1M

7-day rolling average



## New Deaths / 1M

7-day rolling average



\*Large jump in Middle East confirmed cases due to batched reporting of 823,225 new cases in **Turkey** on 10 Dec 2020

\*Significant drop in **France** and **EU** due to batched reporting adjustment on 20 May 2021



# Top 50 Countries: Per 1M

Updated 21 September 2021, 3:30 GMT

3

1 - 25	Average over last 7 days		Total Since 22 Jan			Change from 14d Ago 14 day avg of daily new	
	New Confirmed	New Deaths	Total Confirmed	Estimated Recovered	Total Deaths	Confirmed	Deaths
Hungary	39	1	84,700	81,110	3,120	77%	267%
North Macedonia	231	13	89,791	83,408	3,106	-38%	-7%
Bulgaria	232	10	69,734	63,690	2,902	12%	65%
Czechia	41	0	157,472	154,101	2,842	84%	19%
Brazil	162	3	99,961	95,545	2,780	10%	-20%
Argentina	46	3	115,971	112,691	2,534	-50%	-11%
Colombia	30	1	97,130	94,213	2,475	-18%	-42%
Slovakia	109	0	73,800	70,262	2,303	223%	450%
Belgium	179	1	105,688	101,051	2,202	1%	20%
Slovenia	503	2	136,498	127,968	2,166	92%	213%
Italy	69	1	76,718	73,508	2,156	-26%	2%
Georgia	505	12	149,386	139,724	2,150	-39%	-32%
Croatia	284	2	95,548	90,008	2,074	74%	93%
US	420	6	127,763	119,145	2,043	5%	39%
UK	443	2	110,490	101,876	1,997	-9%	25%
Poland	17	0	76,580	74,384	1,995	98%	73%
Chile	24	1	86,196	83,916	1,955	-13%	-38%
Spain	62	2	105,562	102,689	1,837	-48%	-39%
France	115	1	107,937	104,293	1,789	-44%	-26%
Lithuania	406	5	116,334	109,529	1,767	54%	68%
Portugal	88	1	104,183	100,993	1,757	-46%	-37%
Uruguay	36	0	111,622	109,315	1,741	23%	-22%
Armenia	231	6	85,697	81,033	1,736	18%	35%
EU	108	1	84,055	80,779	1,718	-16%	10%
Panama	73	1	107,640	104,911	1,663	-33%	27%

Change from 14d ago: Compares 14d-avgs. of Daily New Cases/Deaths today with 14d-avgs from 14d ago  
Estimated Recovered: Cases 14d ago - Deaths today

26 - 50	Average over last 7 days		Total Since 22 Jan			Change from 14d Ago 14 day avg of daily new	
	New Confirmed	New Deaths	Total Confirmed	Estimated Recovered	Total Deaths	Confirmed	Deaths
Moldova	251	2	70,068	65,464	1,637	101%	111%
Kosovo	147	7	86,249	81,154	1,574	-71%	-21%
Sweden	99	1	113,373	110,478	1,463	4%	246%
Latvia	259	2	79,922	75,277	1,402	74%	200%
Switzerland	214	1	95,569	89,511	1,273	55%	0%
Austria	220	1	80,547	76,236	1,210	40%	150%
Lebanon	96	1	90,629	87,877	1,207	-31%	26%
Costa Rica	585	8	100,244	92,673	1,189	-1%	47%
Netherlands	119	1	118,104	115,196	1,081	-15%	-22%
Ireland	260	1	76,252	71,444	1,049	-4%	76%
Jordan	87	1	79,740	77,597	1,040	-5%	-18%
Estonia	351	2	113,184	107,553	1,001	26%	53%
Botswana	495	1	73,901	67,967	1,001	2%	-67%
Serbia	800	4	99,814	88,816	894	123%	128%
Israel	842	2	142,691	128,246	873	-1%	0%
West Bank and G.	450	3	84,589	77,157	861	4%	87%
Bahrain	46	0	161,252	159,690	816	-9%	-100%
Turkey	325	3	81,515	76,562	733	25%	-5%
Cuba	711	6	71,505	60,923	605	8%	-9%
Kuwait	13	0	96,295	95,531	571	-59%	-17%
Cyprus	103	2	97,100	95,019	453	-45%	-3%
Mongolia	881	3	84,799	71,672	341	7%	148%
UAE	50	0	74,113	73,017	210	-37%	21%
Qatar	42	0	81,785	80,926	210	-29%	-50%
Total World	69	1	29,571	27,961	607	-10%	-8%

Top 50 countries selected by Cases / 1M. Sorted by Total Deaths / 1M  
Excludes countries with population < 1M





# Top 50 Countries: Raw Volume

Updated 21 September 2021, 3:30 GMT

4

1 - 25	Average over last 7 days		Total Since 22 Jan			Change from 14d Ago 14 day avg of daily new	
	New Confirmed	New Deaths	Total Confirmed	Estimated Recovered	Total Deaths	Confirmed	Deaths
EU	47,997	552	37,425,666	35,966,690	765,093	-16%	10%
US	138,927	1,947	42,289,819	39,437,241	676,076	5%	39%
Brazil	34,463	556	21,247,667	20,308,978	590,955	10%	-20%
India	30,708	310	33,504,534	32,613,458	445,385	-24%	-27%
Mexico	8,143	542	3,573,044	3,161,746	271,765	-31%	-17%
Peru	899	34	2,167,652	1,956,472	199,036	-9%	-20%
Russia	19,164	772	7,189,445	6,734,424	195,438	1%	-1%
Indonesia	3,230	210	4,192,695	3,992,799	140,634	-59%	-55%
UK	30,081	143	7,500,734	6,915,927	135,589	-9%	25%
Italy	4,187	57	4,638,516	4,444,433	130,354	-26%	2%
Colombia	1,527	34	4,942,249	4,793,849	125,924	-18%	-42%
Iran	17,701	395	5,442,232	5,039,460	117,526	-35%	-27%
France	7,492	74	7,045,422	6,807,560	116,765	-44%	-26%
Argentina	2,080	125	5,241,394	5,093,177	114,518	-50%	-11%
Germany	8,821	52	4,155,160	3,927,529	93,058	-3%	63%
South Africa	3,328	173	2,884,134	2,737,847	86,216	-52%	-36%
Spain	2,896	73	4,935,534	4,801,211	85,901	-48%	-39%
Poland	626	9	2,898,299	2,815,178	75,488	98%	73%
Turkey	27,440	241	6,874,917	6,457,181	61,805	25%	-5%
Ukraine	5,014	97	2,455,873	2,340,423	58,477	93%	46%
Chile	458	16	1,647,746	1,604,159	37,367	-13%	-38%
Philippines	19,649	232	2,385,616	2,066,397	36,934	15%	9%
Romania	4,200	79	1,152,052	1,071,451	35,592	187%	204%
Czechia	436	2	1,686,364	1,650,266	30,431	84%	19%
Hungary	375	5	818,231	783,552	30,136	77%	267%

26 - 50	Average over last 7 days		Total Since 22 Jan			Change from 14d Ago 14 day avg of daily new	
	New Confirmed	New Deaths	Total Confirmed	Estimated Recovered	Total Deaths	Confirmed	Deaths
Canada	4,409	28	1,589,989	1,496,181	27,487	57%	60%
Pakistan	2,546	66	1,227,905	1,158,907	27,327	-24%	-19%
Bangladesh	1,696	40	1,544,238	1,489,915	27,251	-45%	-49%
Belgium	2,072	6	1,224,885	1,171,139	25,517	1%	20%
Tunisia	2,086	40	700,400	650,664	24,527	-22%	-45%
Malaysia	16,629	374	2,112,175	1,838,443	23,744	-14%	27%
Iraq	3,349	46	1,978,412	1,901,073	21,869	-39%	-21%
Netherlands	2,039	9	2,023,692	1,973,873	18,518	-15%	-22%
Portugal	897	7	1,062,320	1,029,796	17,914	-46%	-37%
Vietnam	10,171	235	695,744	519,483	17,305	-11%	-17%
Japan	4,886	55	1,680,328	1,566,418	17,247	-63%	15%
Kazakhstan	2,980	67	939,065	876,280	15,503	-37%	-39%
Thailand	13,490	141	1,489,186	1,279,053	15,469	-15%	-30%
Sweden	995	10	1,144,982	1,115,750	14,775	4%	246%
Greece	2,306	40	632,908	587,211	14,505	-22%	4%
Morocco	2,116	49	920,374	872,050	13,958	-52%	-35%
Nepal	1,033	12	785,541	759,711	11,048	-32%	-42%
Switzerland	1,856	7	827,111	774,681	11,015	55%	0%
Austria	1,980	8	725,434	686,614	10,896	40%	150%
Jordan	888	10	813,601	791,733	10,616	-5%	-18%
Serbia	6,993	33	872,110	776,018	7,808	123%	128%
Israel	7,287	21	1,235,064	1,110,041	7,555	-1%	0%
Cuba	8,052	69	809,911	690,048	6,856	8%	-9%
UAE	498	2	733,003	722,163	2,077	-37%	21%
Total World	530,725	8,578	229,081,278	216,606,296	4,700,003	-10%	-8%

Change from 14d ago: Compares 14d-avgs. of Daily New Cases/Deaths today with 14d-avgs from 14d ago  
Estimated Recovered: Cases 14d ago - Deaths today

Top 50 countries selected by Total Cases. Sorted by Total Deaths  
Excludes countries with population < 1M



# United States: Per 1M



1 - 25	Average over last 7 days		Total Since 22 Jan			Change from 14d Ago 14 day avg of daily new	
	New Confirmed	New Deaths	Total Confirmed	Estimated Recovered	Total Deaths	Confirmed	Deaths
Mississippi	577	14	159,972	148,976	3,115	-40%	-2%
New Jersey	254	2	127,767	121,281	3,063	7%	27%
Louisiana	500	13	156,779	147,012	2,898	-12%	5%
New York	265	2	122,194	115,788	2,823	6%	21%
Alabama	641	16	157,512	145,105	2,694	-19%	91%
Arizona	352	6	146,842	139,213	2,681	-18%	29%
Massachusetts	278	2	115,421	108,397	2,678	63%	56%
Rhode Island	342	2	159,861	151,910	2,657	64%	163%
Arkansas	464	9	160,863	151,517	2,479	-27%	13%
Florida	505	18	164,296	153,674	2,416	-35%	54%
South Dakota	501	3	158,707	148,926	2,381	25%	113%
Connecticut	221	2	108,207	102,845	2,373	38%	15%
Georgia	488	12	144,712	132,701	2,333	-3%	93%
S. Carolina	775	12	161,256	147,159	2,276	-18%	23%
Pennsylvania	359	3	108,025	100,921	2,255	33%	46%
Indiana	521	7	138,823	127,495	2,251	27%	91%
New Mexico	311	5	117,429	110,024	2,236	15%	93%
Nevada	351	7	133,862	125,875	2,234	38%	7%
Michigan	324	3	111,932	105,031	2,206	80%	36%
Texas	520	9	136,194	125,740	2,141	4%	15%
Illinois	284	3	126,166	119,261	2,136	29%	87%
Oklahoma	473	8	151,144	139,604	2,133	23%	35%
North Dakota	615	2	165,364	154,940	2,123	32%	57%
Tennessee	747	9	174,353	154,731	2,115	62%	93%
Kansas	462	7	137,401	127,745	2,032	6%	107%

Change from 14d ago: Compares 14d-avgs. of Daily New Cases/Deaths today with 14d-avgs from 14d ago  
Estimated Recovered: Cases 14d ago - Deaths today

26 - 51	Average over last 7 days		Total Since 22 Jan			Change from 14d Ago 14 day avg of daily new	
	New Confirmed	New Deaths	Total Confirmed	Estimated Recovered	Total Deaths	Confirmed	Deaths
Iowa	592	3	137,632	128,421	2,029	38%	16%
Delaware	461	3	132,159	123,695	1,972	19%	-22%
West Virginia	1,015	15	125,232	109,297	1,911	30%	109%
Missouri	342	4	131,612	124,868	1,882	-7%	-14%
Kentucky	893	9	147,332	130,750	1,867	33%	72%
Ohio	586	0	115,672	105,711	1,837	29%	-76%
Montana	856	6	132,244	119,389	1,766	82%	49%
California	214	3	117,548	112,560	1,721	-29%	16%
Maryland	203	2	86,051	81,678	1,698	0%	27%
DC	363	1	84,397	77,574	1,658	80%	14%
Wyoming	907	10	147,728	131,813	1,586	47%	22%
N. Carolina	585	7	128,366	116,477	1,504	44%	82%
Wisconsin	536	2	133,925	126,578	1,496	23%	9%
Idaho	657	13	136,293	124,727	1,482	56%	246%
Virginia	419	4	97,960	90,750	1,442	8%	51%
Minnesota	377	2	121,297	114,783	1,434	42%	94%
Colorado	325	3	113,474	107,664	1,286	8%	22%
Nebraska	348	1	133,264	126,627	1,226	7%	-47%
New Hampshire	323	2	84,872	78,881	1,072	96%	33%
Washington	400	5	82,534	74,619	955	37%	88%
Utah	454	3	154,206	145,549	875	66%	97%
Oregon	395	5	74,249	66,452	852	12%	36%
Maine	361	2	62,423	57,347	732	32%	175%
Alaska	1,140	3	140,075	123,257	648	86%	-24%
Hawaii	359	5	53,614	47,710	504	-34%	42%
Vermont	343	2	50,905	46,198	478	32%	33%

Sorted by Total Deaths / 1M





# United States: Raw Volume

Updated 21 September 2021, 3:30 GMT

6

1 - 25	Average over last 7 days		Total Since 22 Jan			Change from 14d Ago 14 day avg of daily new	
	New Confirmed	New Deaths	Total Confirmed	Estimated Recovered	Total Deaths	Confirmed	Deaths
California	8,439	114	4,644,566	4,447,489	68,019	-29%	16%
Texas	15,092	249	3,949,052	3,645,942	62,071	4%	15%
New York	5,165	33	2,377,102	2,252,487	54,927	6%	21%
Florida	10,857	376	3,528,698	3,300,567	51,884	-35%	54%
Pennsylvania	4,602	42	1,382,933	1,291,986	28,864	33%	46%
New Jersey	2,257	18	1,134,851	1,077,237	27,202	7%	27%
Illinois	3,603	39	1,598,757	1,511,252	27,072	29%	87%
Georgia	5,184	125	1,536,467	1,408,942	24,772	-3%	93%
Michigan	3,235	26	1,117,846	1,048,929	22,034	80%	36%
Ohio	6,844	0	1,352,104	1,235,671	21,471	29%	-76%
Arizona	2,564	47	1,068,823	1,013,295	19,513	-18%	29%
Massachusetts	1,919	12	795,543	747,129	18,455	63%	56%
N. Carolina	6,132	76	1,346,316	1,221,617	15,776	44%	82%
Indiana	3,510	44	934,586	858,323	15,157	27%	91%
Tennessee	5,103	63	1,190,689	1,056,684	14,441	62%	93%
Louisiana	2,322	60	728,831	683,427	13,473	-12%	5%
Alabama	3,145	76	772,311	711,478	13,210	-19%	91%
Virginia	3,580	32	836,140	774,598	12,312	8%	51%
S. Carolina	3,990	59	830,260	757,681	11,721	-18%	23%
Missouri	2,099	27	807,762	766,366	11,549	-7%	-14%
Maryland	1,227	11	520,236	493,798	10,263	0%	27%
Mississippi	1,718	42	476,100	443,374	9,270	-40%	-2%
Wisconsin	3,122	12	779,767	736,994	8,713	23%	9%
Connecticut	787	5	385,788	366,673	8,462	38%	15%
Oklahoma	1,873	33	598,072	552,410	8,440	23%	35%

Change from 14d ago: Compares 14d-avgs. of Daily New Cases/Deaths today with 14d-avgs from 14d ago  
Estimated Recovered: Cases 14d ago - Deaths today

26 - 51	Average over last 7 days		Total Since 22 Jan			Change from 14d Ago 14 day avg of daily new	
	New Confirmed	New Deaths	Total Confirmed	Estimated Recovered	Total Deaths	Confirmed	Deaths
Kentucky	3,990	38	658,231	584,150	8,339	33%	72%
Minnesota	2,128	13	684,070	647,332	8,086	42%	94%
Arkansas	1,401	26	485,452	457,250	7,482	-27%	13%
Colorado	1,869	15	653,465	620,010	7,405	8%	22%
Washington	3,047	41	628,488	568,219	7,271	37%	88%
Nevada	1,082	22	412,317	387,715	6,880	38%	7%
Iowa	1,867	9	434,239	405,176	6,401	38%	16%
Kansas	1,346	20	400,293	372,161	5,919	6%	107%
New Mexico	652	10	246,229	230,701	4,689	15%	93%
Oregon	1,665	21	313,161	280,279	3,594	12%	36%
West Virginia	1,818	27	224,435	195,876	3,424	30%	109%
Rhode Island	363	2	169,350	160,927	2,815	64%	163%
Utah	1,455	9	494,378	466,625	2,804	66%	97%
Idaho	1,175	23	243,565	222,895	2,649	56%	246%
Nebraska	672	2	257,787	244,949	2,371	7%	-47%
South Dakota	443	2	140,402	131,749	2,106	25%	113%
Delaware	449	3	128,692	120,450	1,920	19%	-22%
Montana	915	6	141,339	127,600	1,887	82%	49%
North Dakota	469	2	126,018	118,074	1,618	32%	57%
New Hampshire	439	2	115,401	107,255	1,458	96%	33%
DC	256	1	59,563	54,748	1,170	80%	14%
Maine	485	3	83,910	77,087	984	32%	175%
Wyoming	525	6	85,499	76,288	918	47%	22%
Hawaii	508	8	75,911	67,551	714	-34%	42%
Alaska	834	2	102,471	90,168	474	86%	-24%
Vermont	214	1	31,764	28,827	298	32%	33%

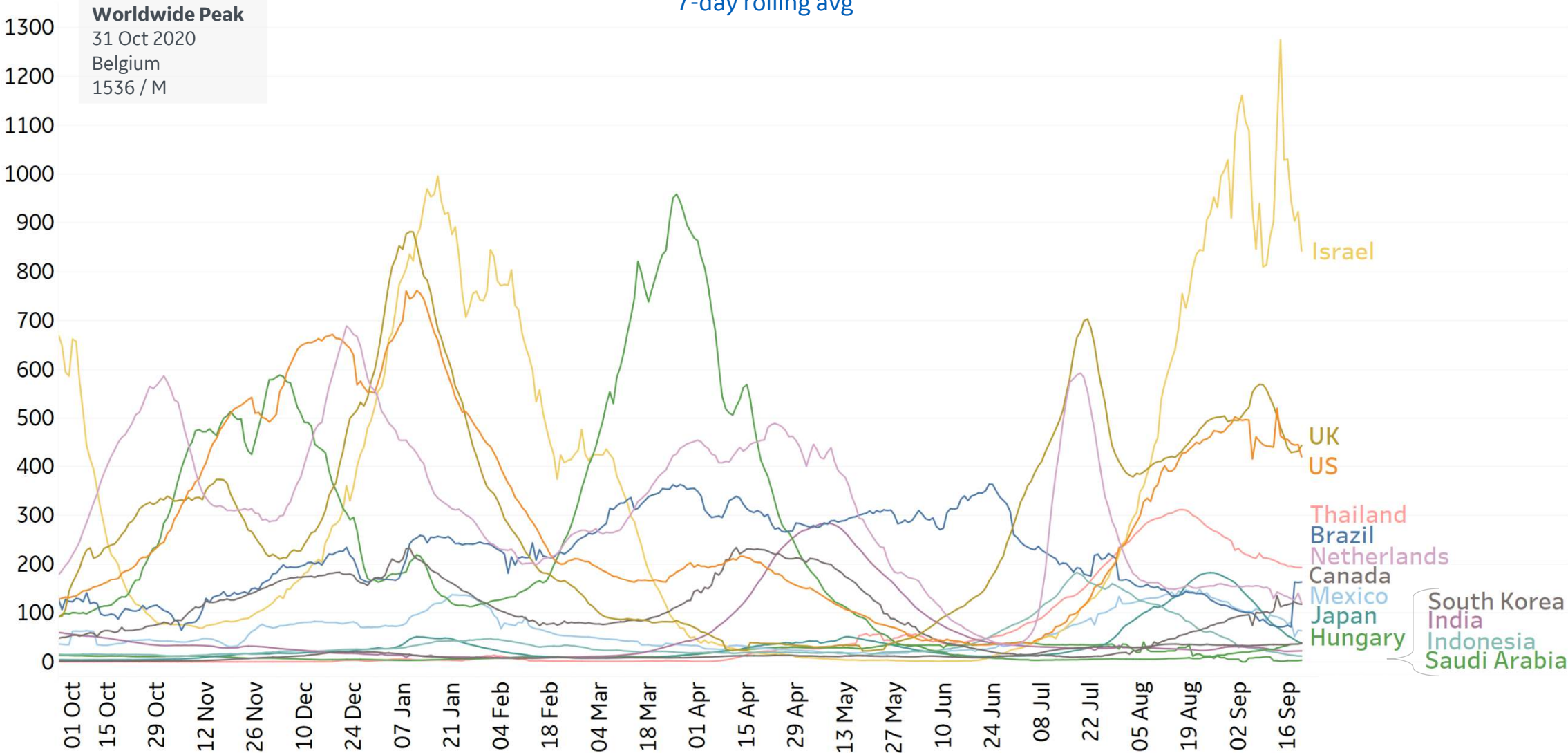
Sorted by Total Deaths



# New Confirmed Cases in Select Countries

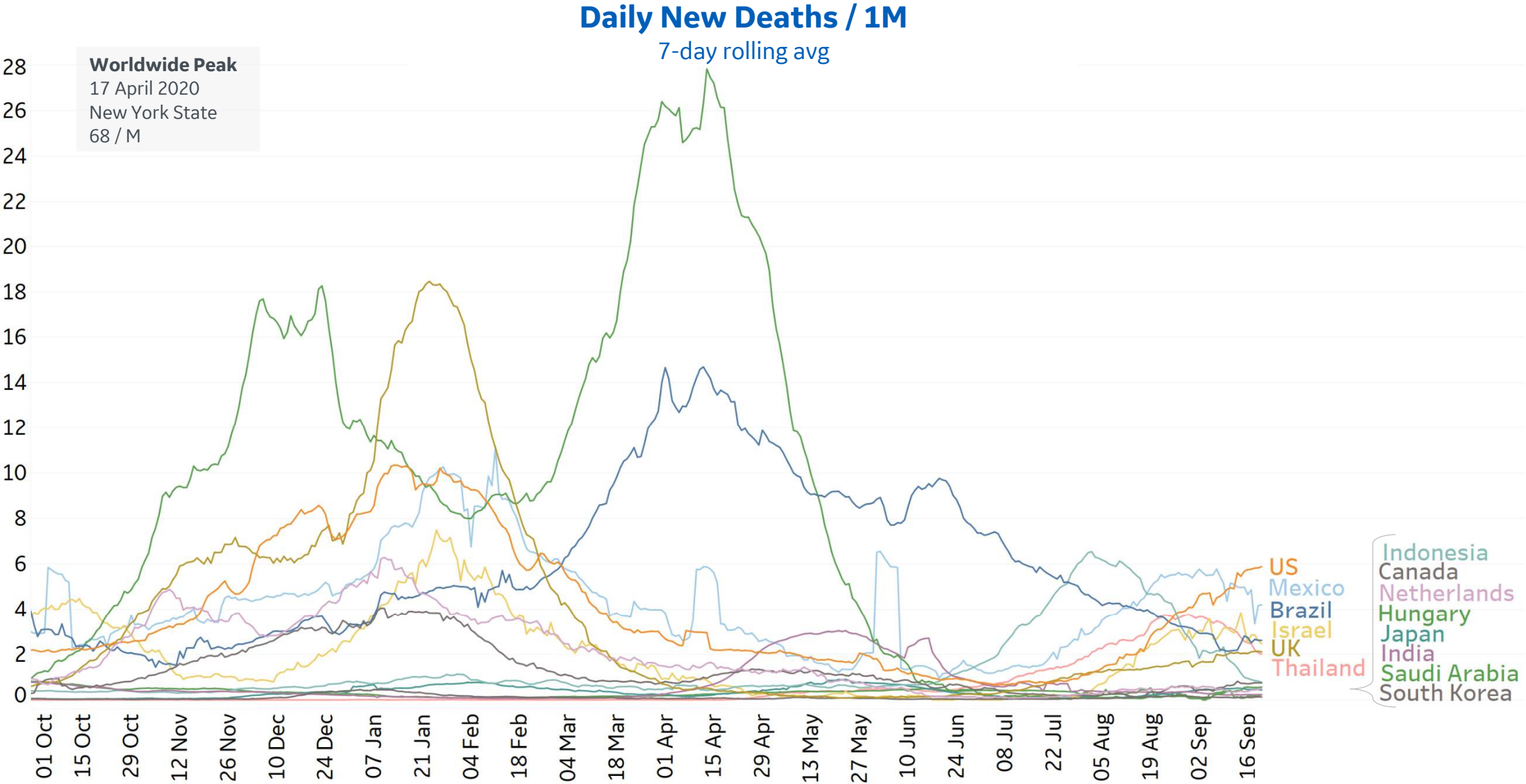
## Daily New Confirmed Cases / 1M

7-day rolling avg





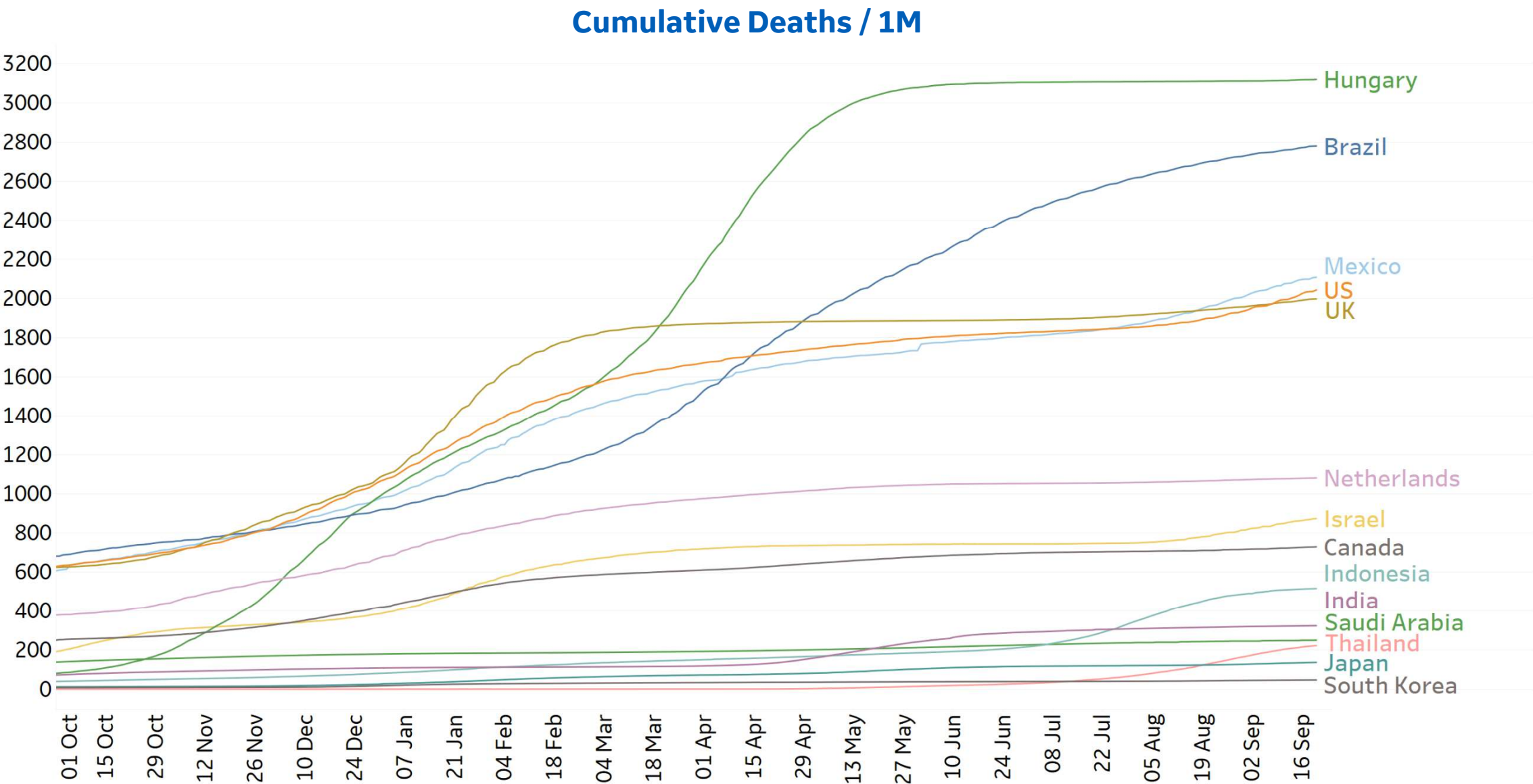
# New Deaths in Select Countries





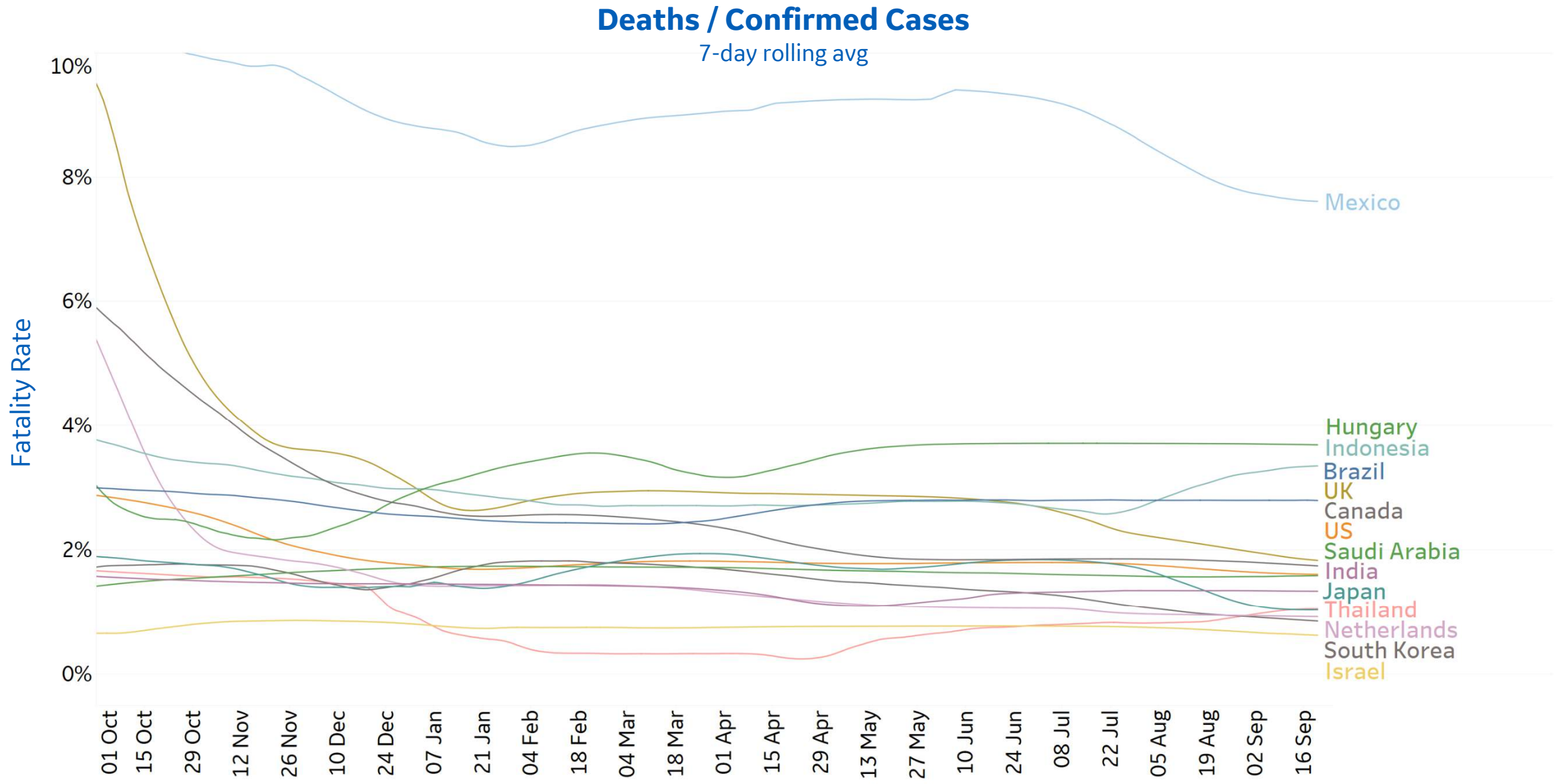


# Cumulative Deaths in Select Countries





# Fatality Rate in Select Countries

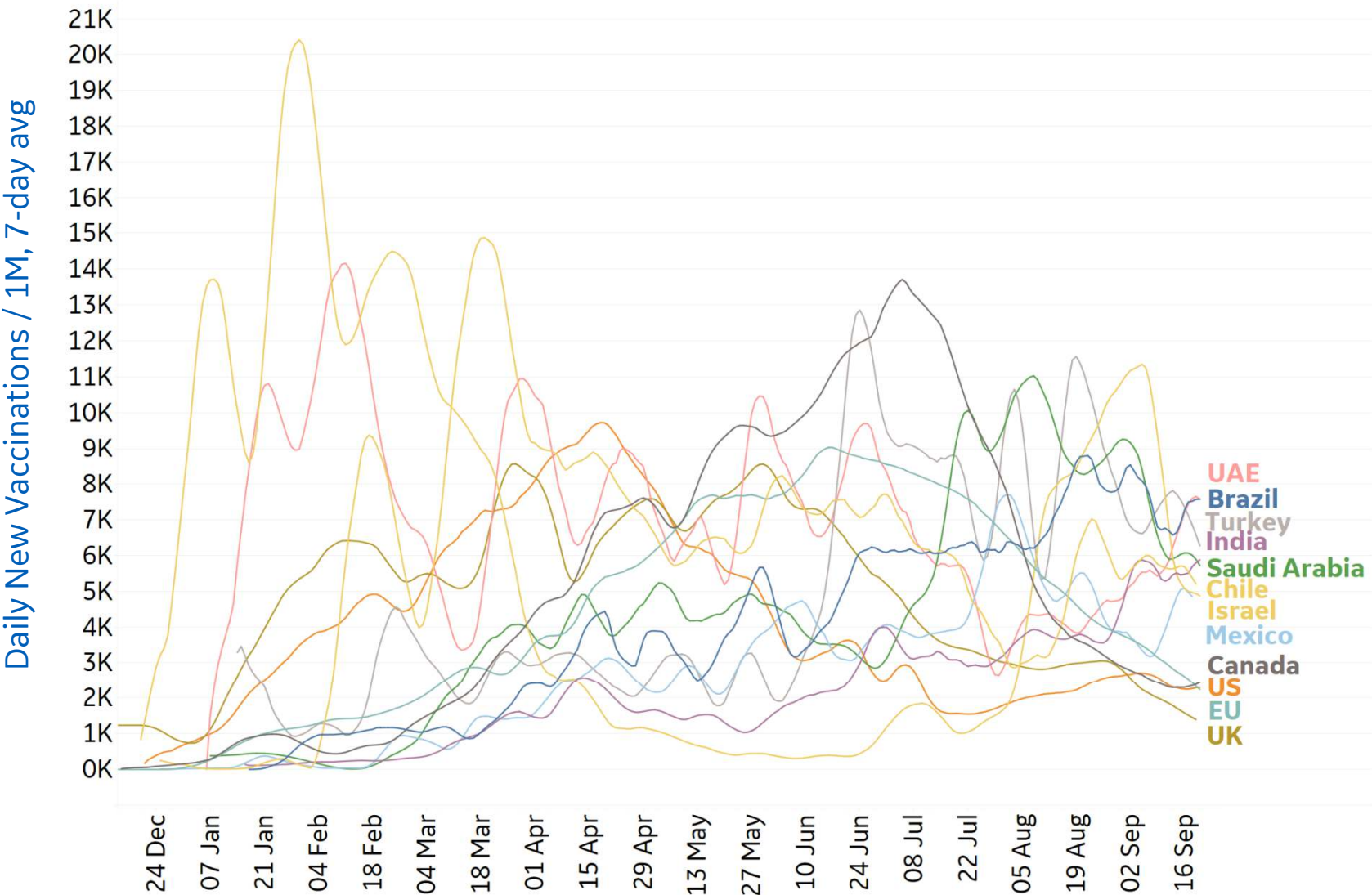




# Daily & Total Vaccinations, Select Countries

Updated 21 September 2021, 3:30 GMT

Select countries with data available



	Total Vaccinations per 1M	% of Population Fully Vaccinated
UAE	1,970,250	81.2%
Israel	1,705,324	64.6%
Chile	1,610,454	73.3%
Spain	1,482,904	77.0%
Canada	1,462,748	70.1%
UK	1,370,815	65.5%
Italy	1,367,313	65.8%
Germany	1,263,181	62.8%
Turkey	1,252,222	50.1%
EU	1,242,041	61.6%
Saudi Arabia	1,178,707	51.4%
US	1,166,872	54.9%
Brazil	1,046,666	37.9%
India	588,572	14.9%

\*Total Vax and % Fully Vaccinated use  
most current reported data per country





# US State Vaccinations to Date



State	% Fully Vaccinated	% Rec'd at Least 1 Dose	Population
Vermont	69.0%	77.2%	623,989
Connecticut	67.9%	75.4%	3,565,287
Maine	67.5%	73.3%	1,344,212
Massachusetts	67.3%	76.8%	6,892,503
Rhode Island	67.1%	74.2%	1,059,361
New Jersey	63.5%	71.9%	8,882,190
Maryland	63.4%	69.9%	6,045,680
New York	62.7%	70.1%	19,453,561
Washington	62.2%	70.4%	7,614,893
New Mexico	62.2%	71.8%	2,096,829
New Hampshire	61.0%	68.8%	1,359,711
Oregon	60.0%	66.0%	4,217,737
Virginia	59.7%	67.7%	8,535,519
Colorado	58.6%	64.9%	5,758,736
California	58.0%	70.8%	39,512,223
Minnesota	57.6%	63.1%	5,639,632
Hawaii	57.0%	76.2%	1,415,872
Pennsylvania	57.0%	71.4%	12,801,989
Delaware	56.8%	65.5%	973,764
Florida	56.1%	66.2%	21,477,737
Wisconsin	55.7%	60.4%	5,822,434
Nebraska	53.8%	58.8%	1,934,408
Iowa	53.4%	57.6%	3,155,070
Illinois	52.8%	67.7%	12,671,821
Michigan	51.8%	56.5%	9,986,857

**53.6%**

Total US population  
**fully vaccinated**  
(**536,072 per million**)

**67.9%**

Eligible US population (16+)  
**fully vaccinated**  
(**678,572 per million**)

**62.5%**

Total US population  
having received  
**at least 1 dose**  
(**624,825 per million**)

**79.1%**

Eligible US population (16+)  
having received  
**at least 1 dose**  
(**790,918 per million**)

State	% Fully Vaccinated	% Rec'd at Least 1 Dose	Population
Kentucky	50.8%	59.6%	4,467,673
South Dakota	50.8%	58.2%	884,659
Arizona	50.4%	58.7%	7,278,717
Kansas	50.3%	59.1%	2,913,314
Texas	50.3%	59.2%	28,995,881
Nevada	49.9%	60.0%	3,080,156
Ohio	49.7%	53.7%	11,689,100
Utah	49.5%	58.1%	3,205,958
Alaska	49.2%	56.6%	731,545
North Carolina	48.8%	58.4%	10,488,084
Indiana	47.8%	51.7%	6,732,219
Montana	47.7%	54.0%	1,068,778
Missouri	47.1%	54.2%	6,137,428
Oklahoma	46.6%	55.8%	3,956,971
South Carolina	46.1%	54.3%	5,148,714
Arkansas	44.7%	55.1%	3,017,804
Louisiana	44.5%	51.1%	4,648,794
Tennessee	44.1%	51.8%	6,829,174
Georgia	44.1%	54.0%	10,617,423
North Dakota	43.4%	50.3%	762,062
Mississippi	42.1%	49.3%	2,976,149
Alabama	41.4%	51.9%	4,903,185
Idaho	40.8%	46.2%	1,787,065
Wyoming	40.6%	47.5%	578,759
West Virginia	40.2%	47.8%	1,792,147

US total percentages of population fully vaccinated and having received at least one dose include values reported by the 50 US states.

Eligible US population is derived from 2019 estimates of the US population aged 16+ (census.gov)

Federal agencies are excluded from these calculations

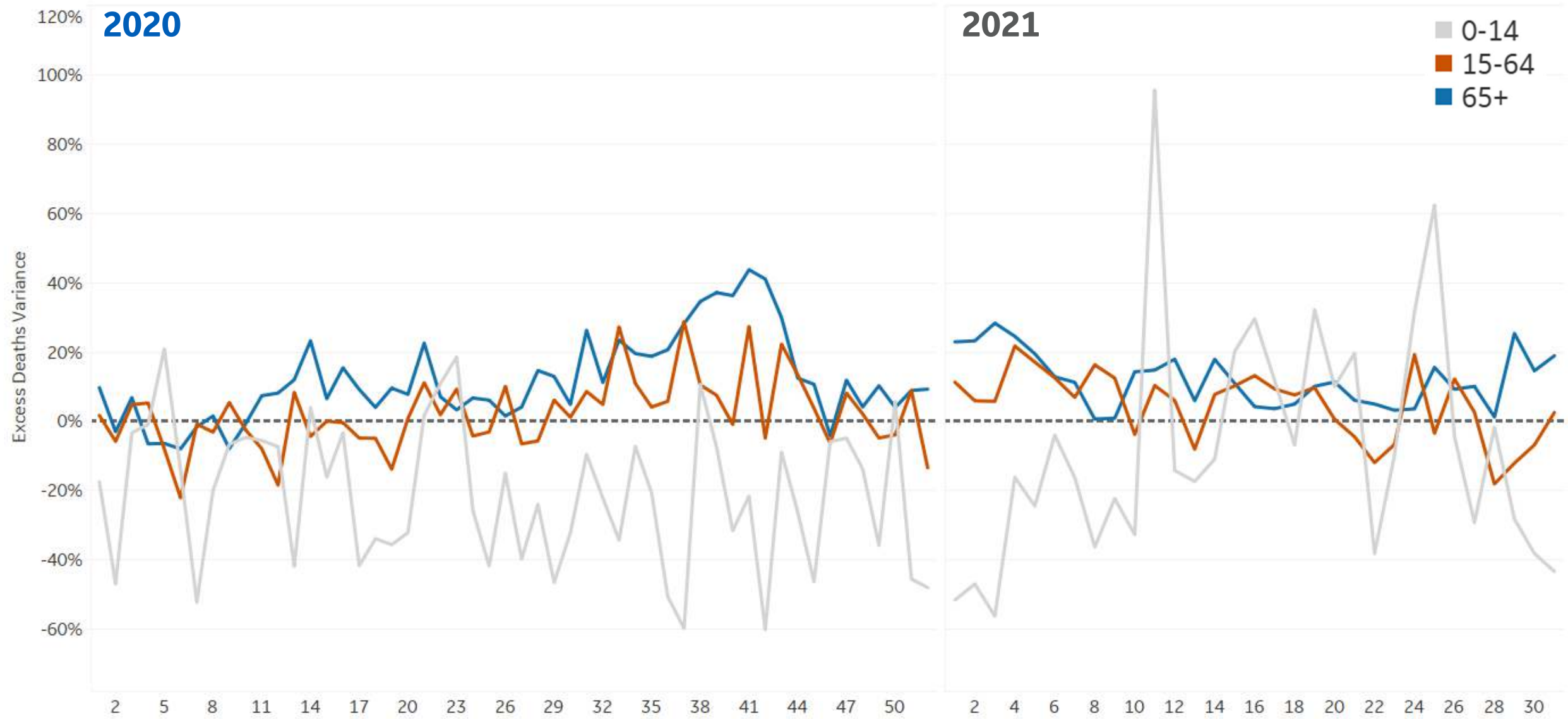
Sources: Our World in Data US State Vaccination Data;  
CDC COVID-19 Vaccine Tracker



# Feature: Excess Deaths in Israel

**Excess Deaths Variance by Age Group** compared to 2015-19 avg for same period (2021 up to **Week 31**)

*\*The weekly number of deaths on the 0-14 age group is under 50*

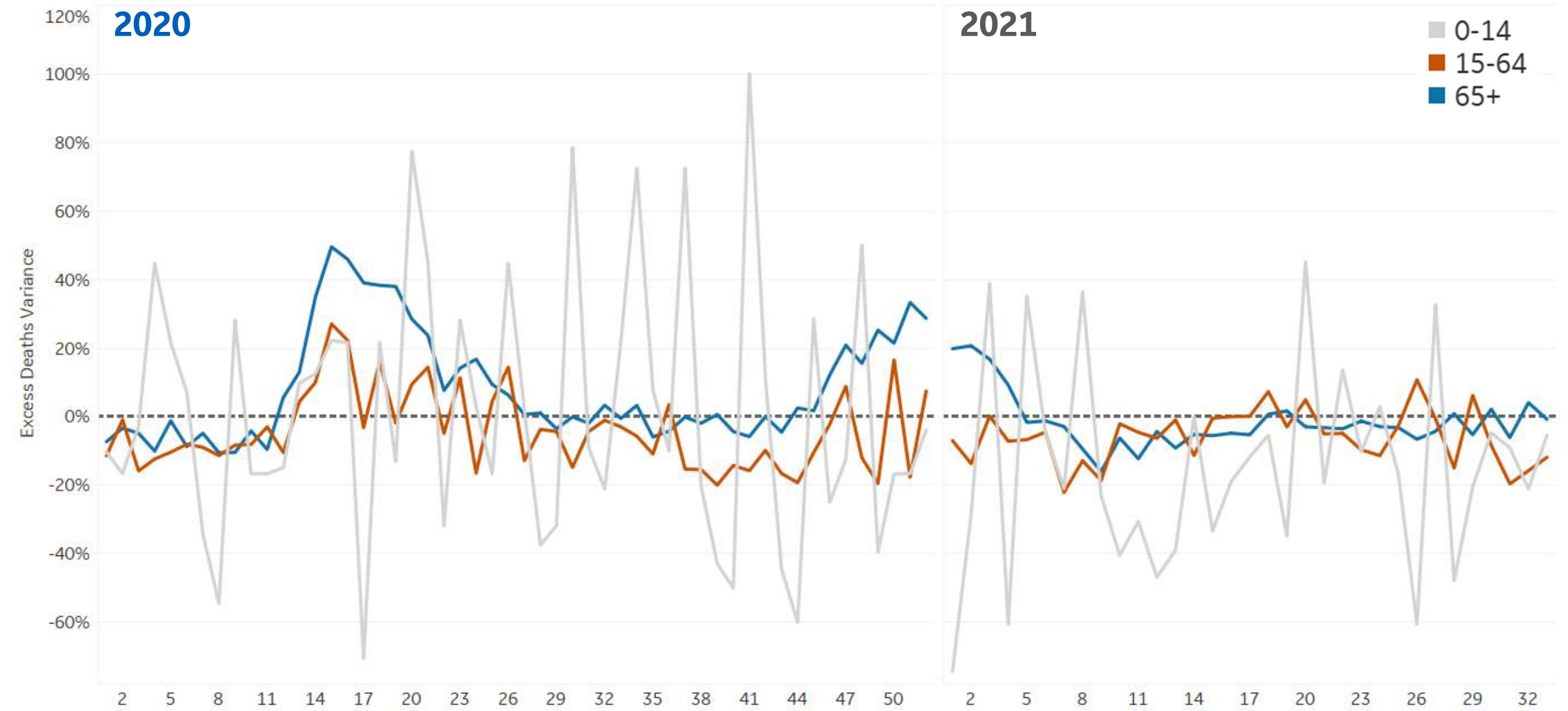




# Feature: Excess Deaths in Sweden

**Excess Deaths Variance by Age Group** compared to 2015-19 avg for same period (2021 up to **Week 33**)

*\*The weekly number of deaths on the 0-14 age group is under 50*



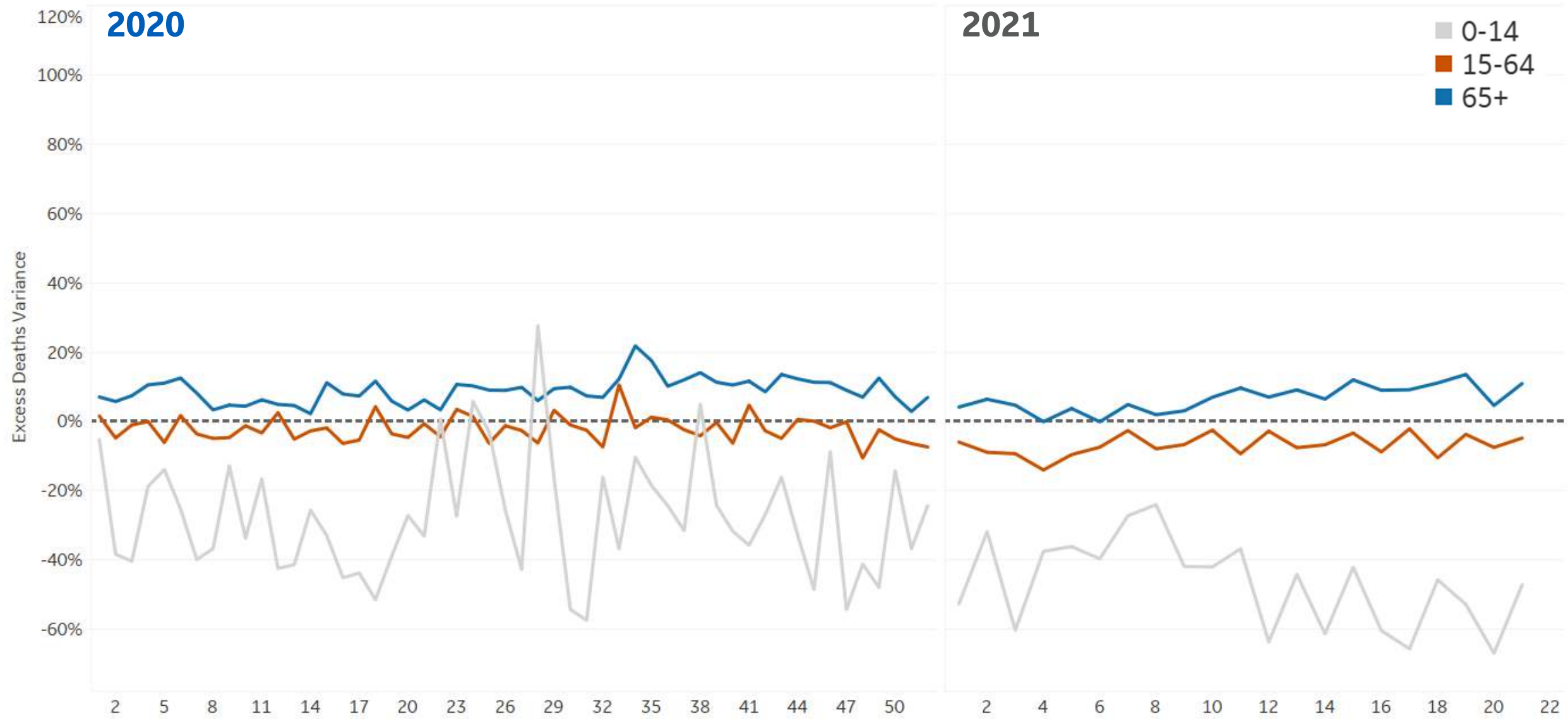




# Feature: Excess Deaths in South Korea

**Excess Deaths Variance by Age Group** compared to 2015-19 avg for same period (2021 up to **Week 21**)

*\*The weekly number of deaths on the 0-14 age group is under 50*

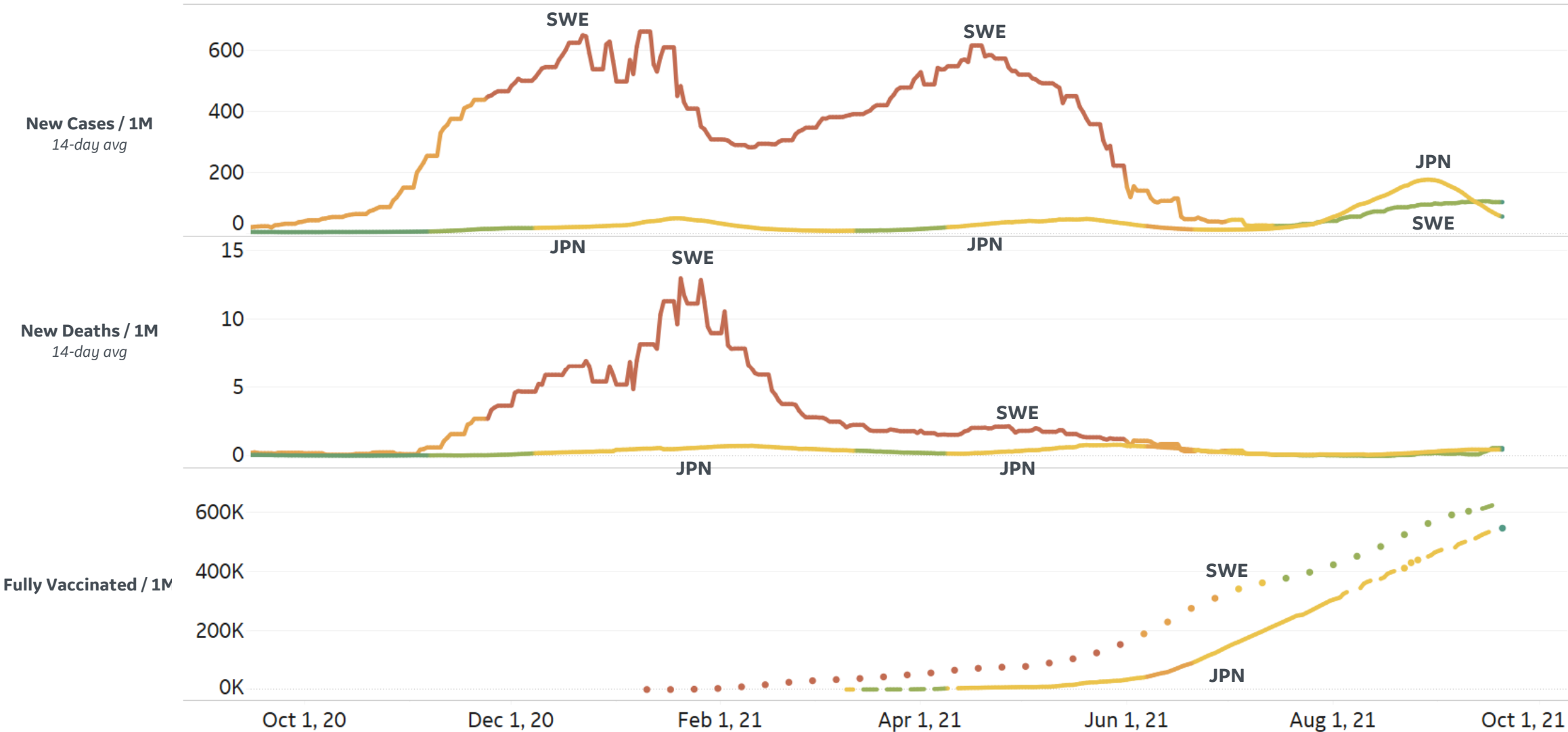




# Feature: COVID-19 Cases, Deaths, and Vaccinations in JPN & SWE

## New Confirmed Cases, Deaths, and Vaccinations in Japan & Sweden since 15 Sept 2020

14-day averages, per 1M. Colored by Oxford Stringency Index, strictness of government lockdown policies



\* Sweden records vaccination counts weekly

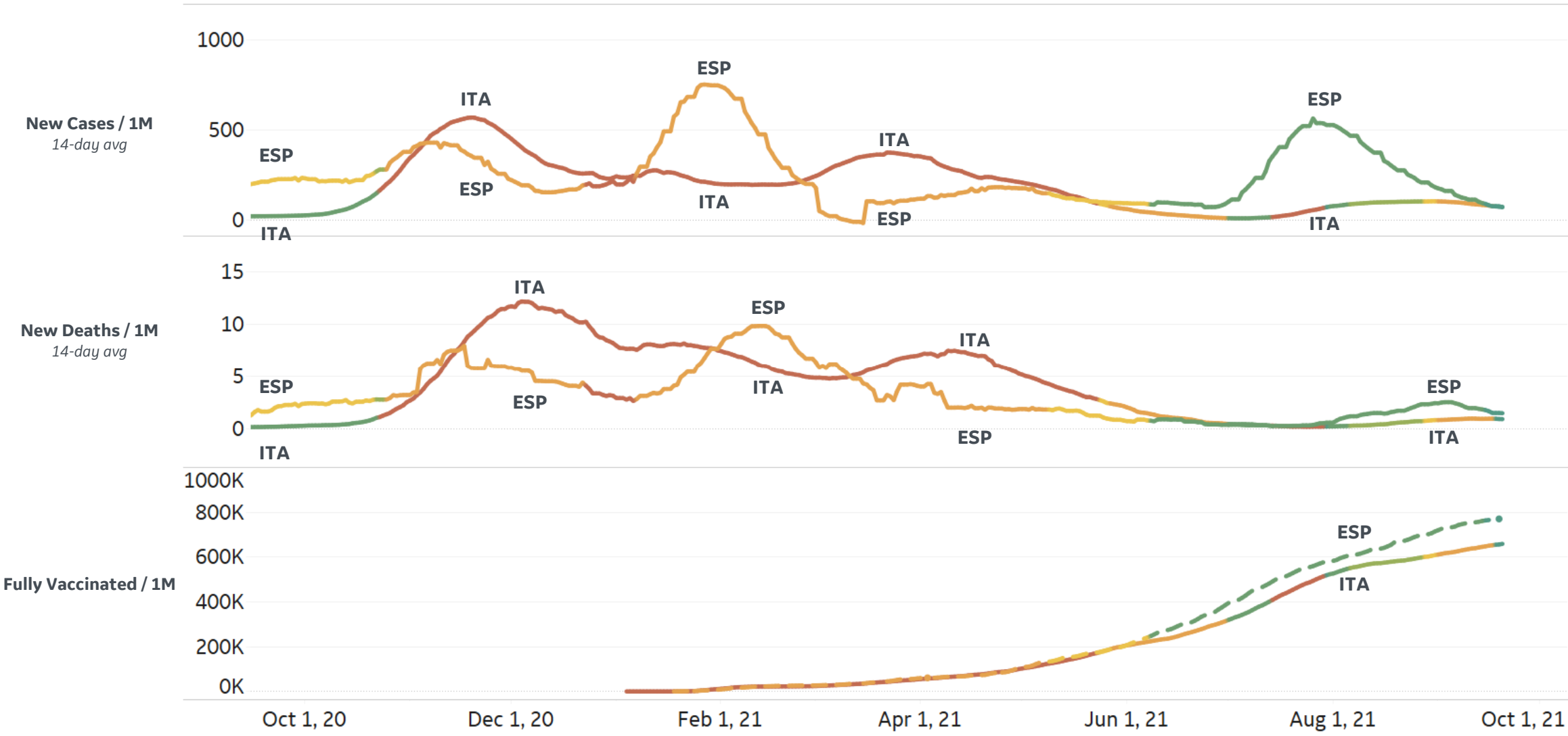


# Feature: COVID-19 Cases, Deaths, and Vaccinations in ESP & ITA

Updated 21 September 2021, 3:30 GMT 17

## New Confirmed Cases, Deaths, and Vaccinations in Spain & Italy since 15 Sept 2020

14-day averages, per 1M. Colored by Oxford Stringency Index, strictness of government lockdown policies



\* Spain records vaccination counts Sunday-Thursday

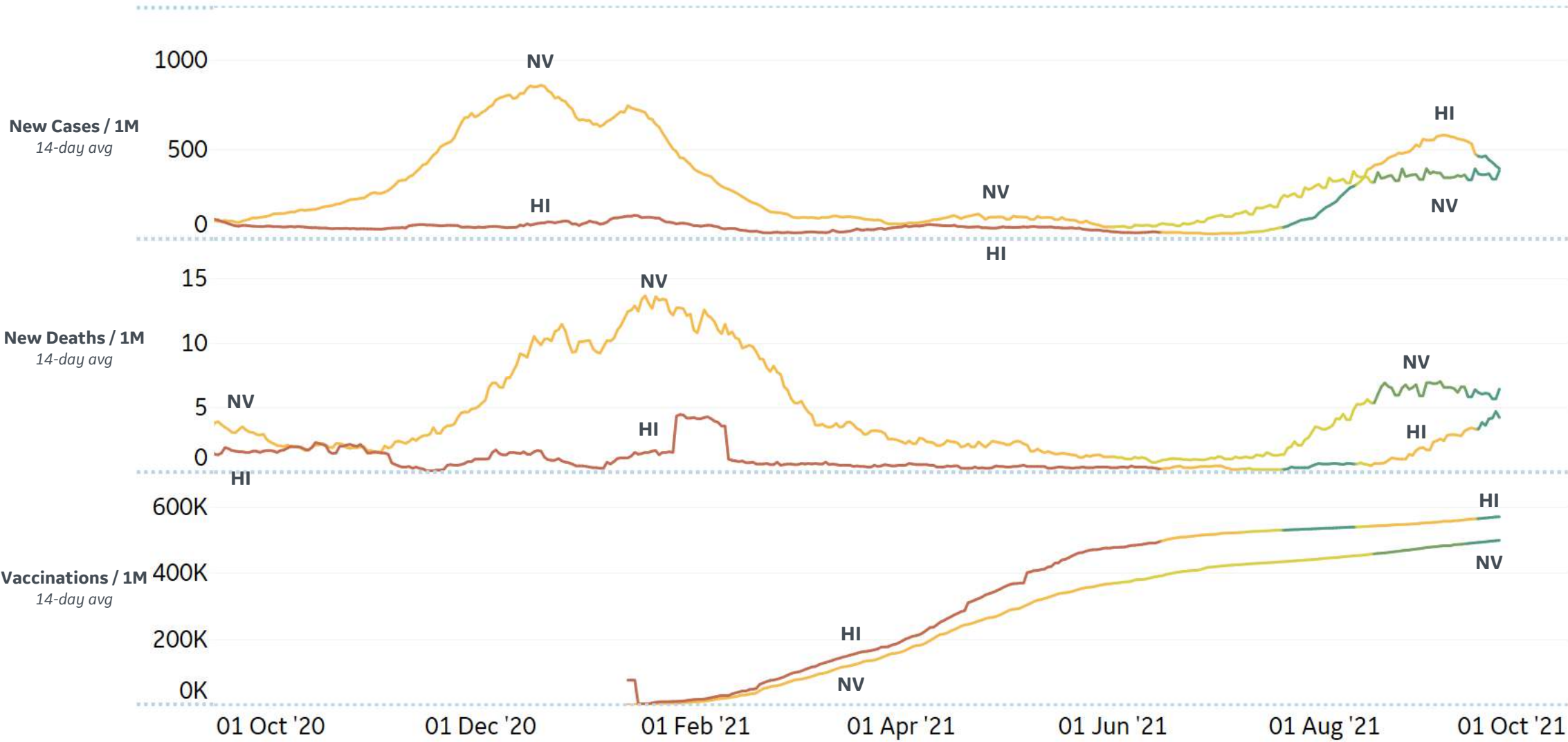




# Feature: COVID-19 Cases, Deaths, and Vaccinations in HI & NV

## New Confirmed Cases, Deaths, and Vaccinations in Hawaii and Nevada since 15 Sept 2020

14-day averages, per 1M. Colored by Oxford Stringency Index, strictness of State government lockdown policies



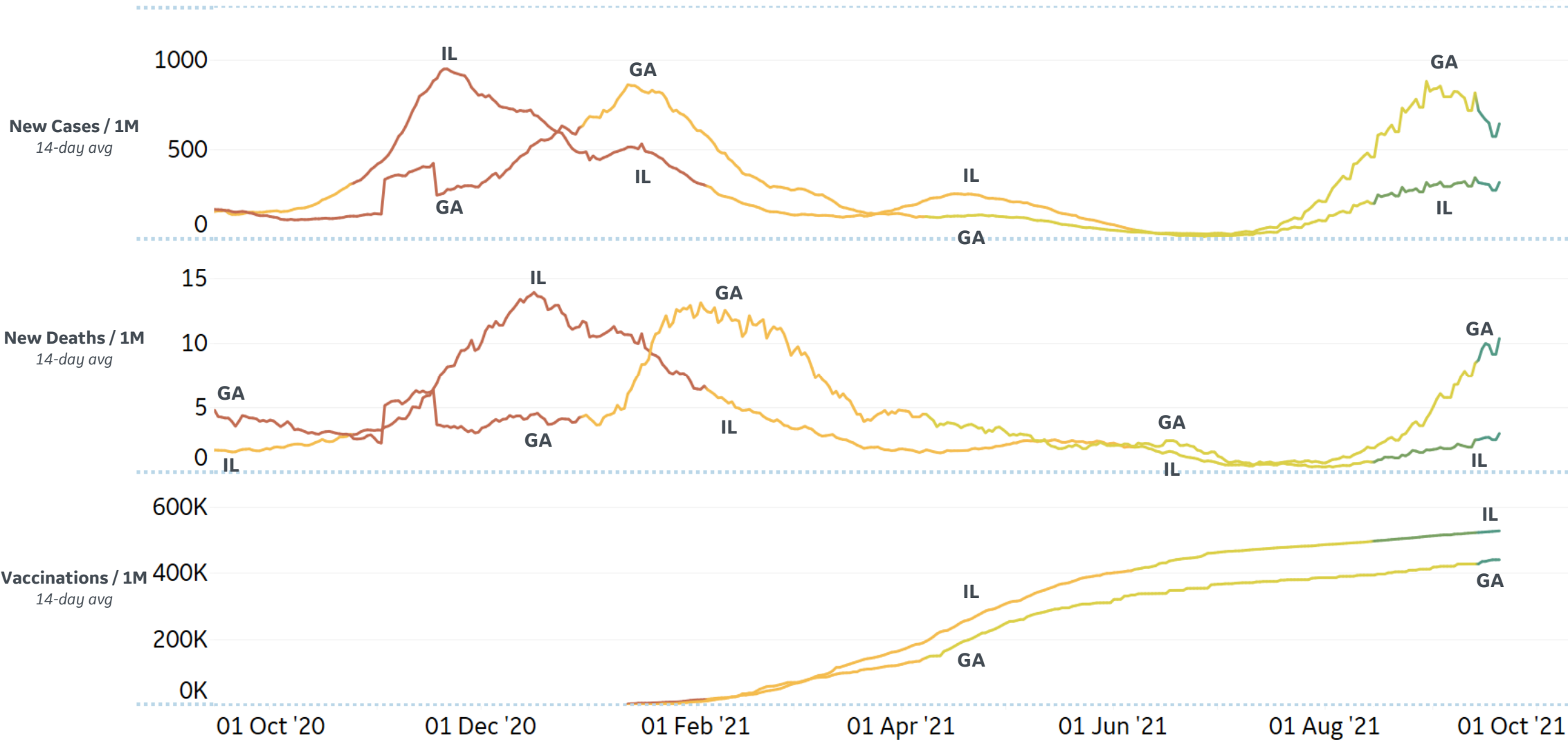


# Feature: COVID-19 Cases, Deaths, and Vaccinations in GA & IL

Updated 21 September 2021, 3:30 GMT 19

## New Confirmed Cases, Deaths, and Vaccinations in Georgia and Illinois since 15 Sept 2020

14-day averages, per 1M. Colored by Oxford Stringency Index, strictness of State government lockdown policies



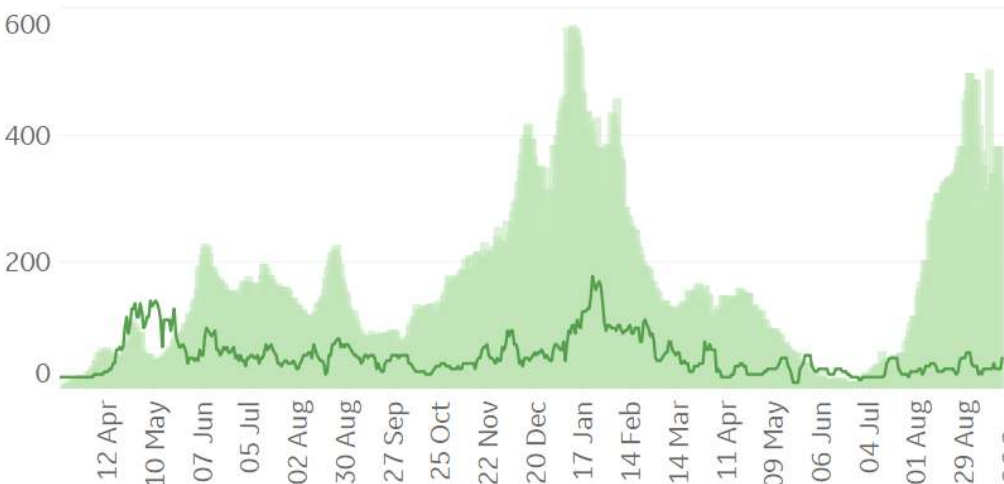


# Feature: Trends in CC Ecosystem Cities

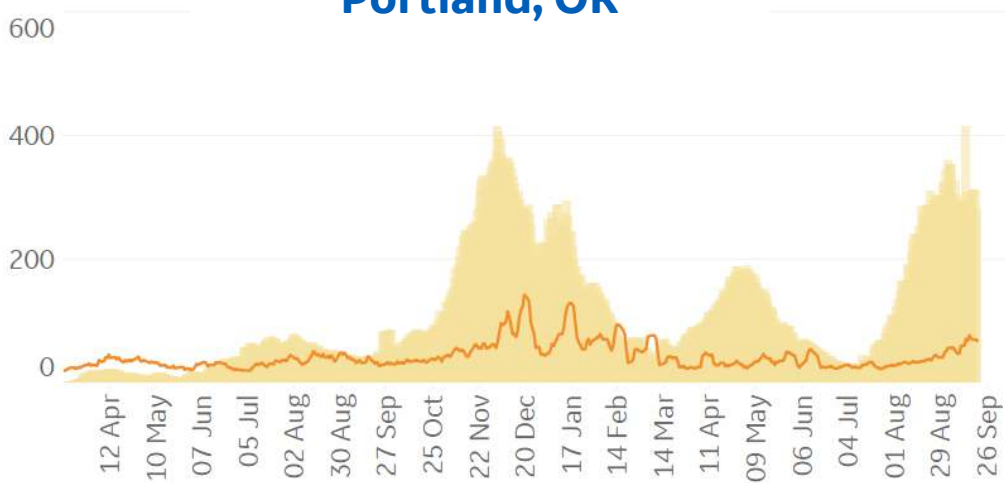
Baltimore, MD



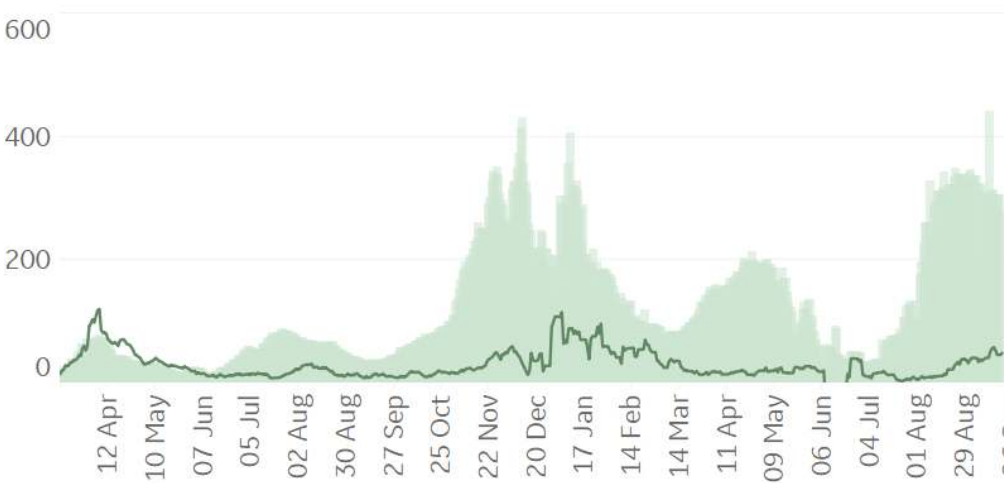
Durham, NC



Portland, OR



Seattle, WA



Daily New Confirmed Cases / 1M (Bars)

Daily New Deaths / 1M (Lines)





# Feature: Trends in CC Ecosystem Cities

Daily New Confirmed Cases / 1M (Bars)

### Asheville, NC



### Bradford, UK



Daily New Deaths / 1M (Lines)

### Miami, FL



### Orlando, FL



\*Bradford last updated 4/16  
\*Miami and Orlando county deaths last updated 6/6



# Feature: Trends in CC Ecosystem Cities

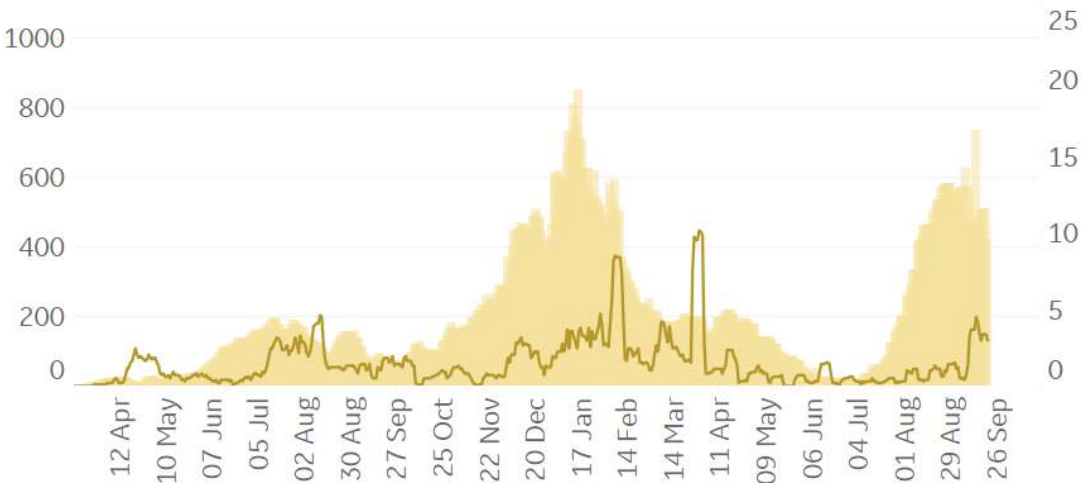
Daily New Confirmed Cases / 1M (Bars)

7-day Rolling Avg

## Philadelphia, PA



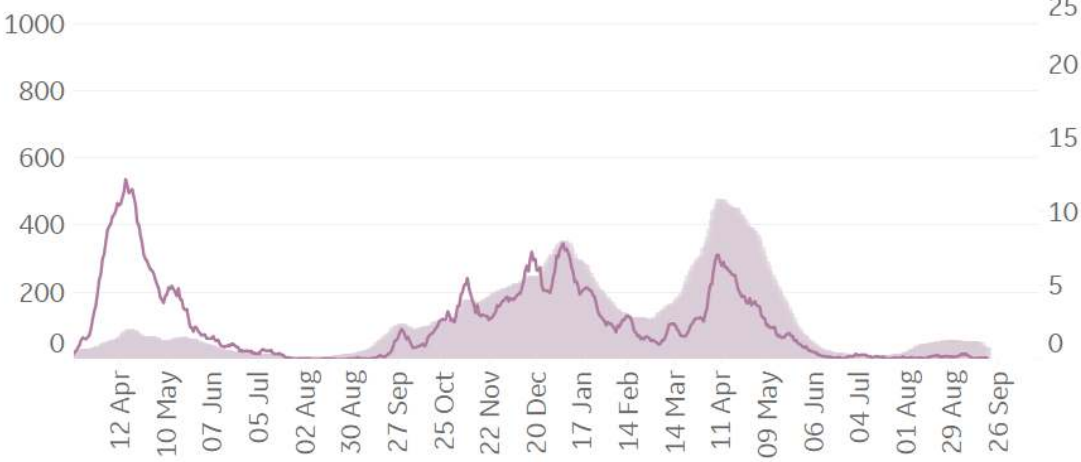
## Raleigh, NC



## Tampa, FL



## Toronto, CA



Daily New Deaths / 1M (Lines)  
7-day Rolling Avg

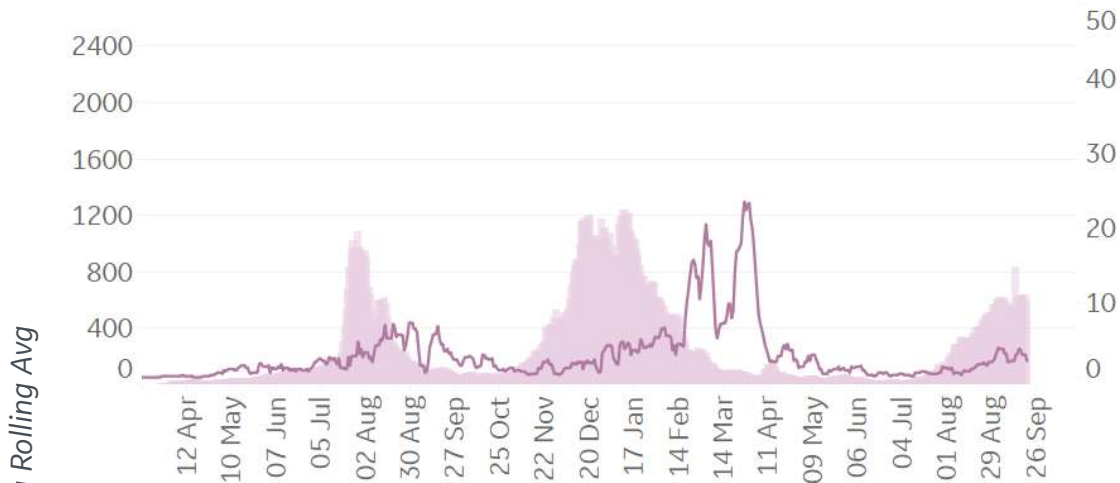
\*Tampa county deaths last updated 6/6



# Feature: Trends in CC Ecosystem Cities

Bakersfield, CA

Daily New Confirmed Cases / 1M (Bars)



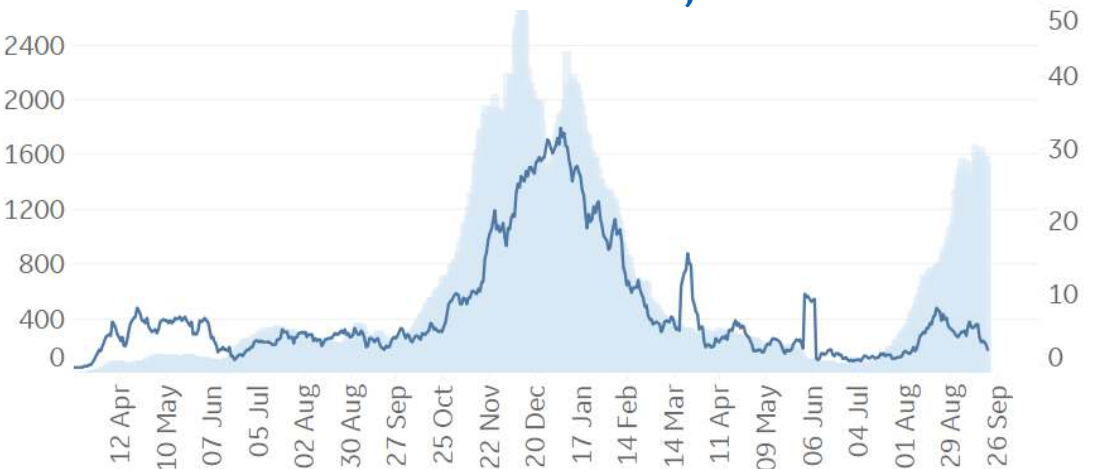
Hanford, CA



Los Angeles, CA



Cincinnati, OH



Daily New Deaths / 1M (Lines)  
7-day Rolling Avg





# Europe & Middle East

## Per 1M in Region

	Today	Change
Active Cases	73,109	+0.2%
Confirmed	158	+0.2%
Deaths	2	+0.1%
Recovered	156	+0.2%

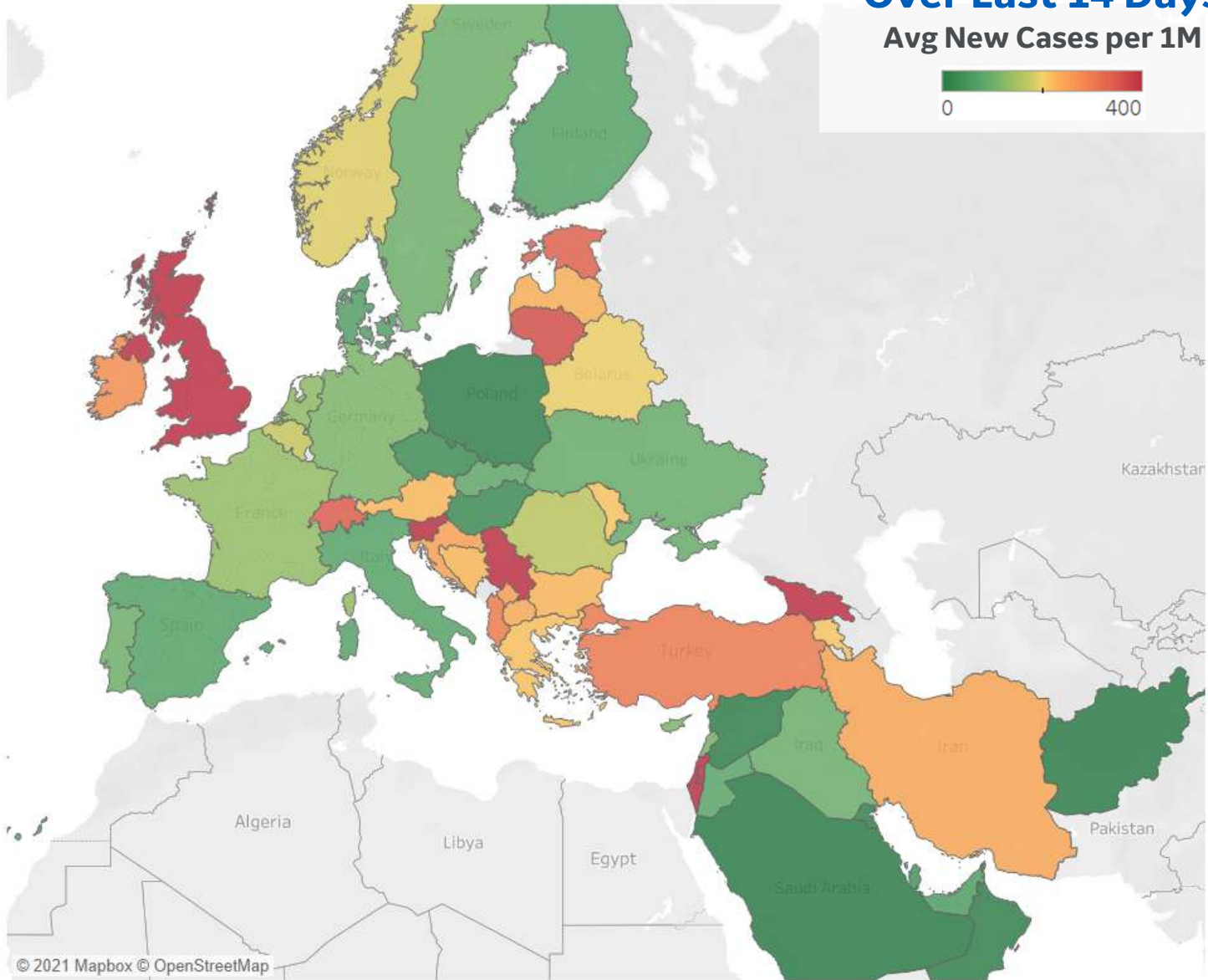
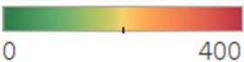
## Average Daily New Cases & Deaths per 1M Over Last 14 Days

	Cases	Deaths
Israel	969	3
Serbia	722	3
Georgia	537	13
UK	473	2
West Bank and Gaza	469	3
Slovenia	455	2
Lithuania	360	5
Switzerland	342	1
Estonia	331	1
Turkey	301	3
Albania	295	2
Ireland	269	1
Kosovo	251	10
Croatia	248	2
Iran	243	5

Top 15 countries selected by 14-day avg new cases per 1M  
Excl. countries with population < 1M

## Over Last 14 Days

Avg New Cases per 1M





# Mexico

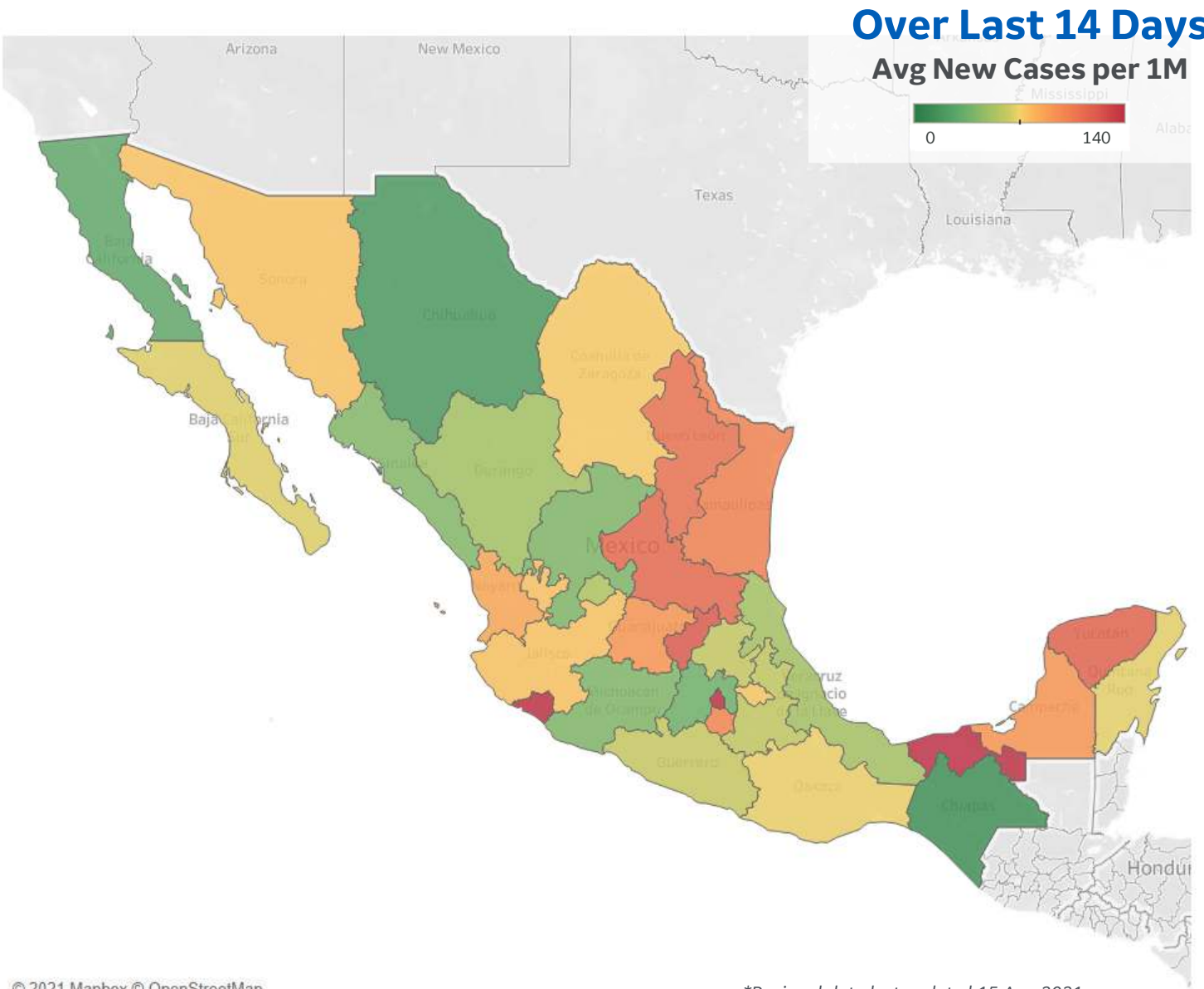
## Per 1M in Region

	Today	Change
Active Cases	25,605	+0.1%
Confirmed	26	+0.1%
Deaths	2	+0.1%
Recovered	38	+0.2%

## Average Daily New Cases & Deaths per 1M Over Last 14 Days

	Cases	Deaths
Tabasco	269	6
Colima	232	14
Distrito Federal	211	8
Querétaro	121	6
Yucatán	117	6
San Luis Potosí	113	6
Nuevo León	110	6
Tamaulipas	101	5
Morelos	99	6
Guanajuato	92	3
Campeche	92	8
Nayarit	85	7
Nacional	78	5
Jalisco	75	6
Sonora	75	6

Top 15 countries selected by 14-day avg new cases per 1M  
Excl. countries with population < 1M

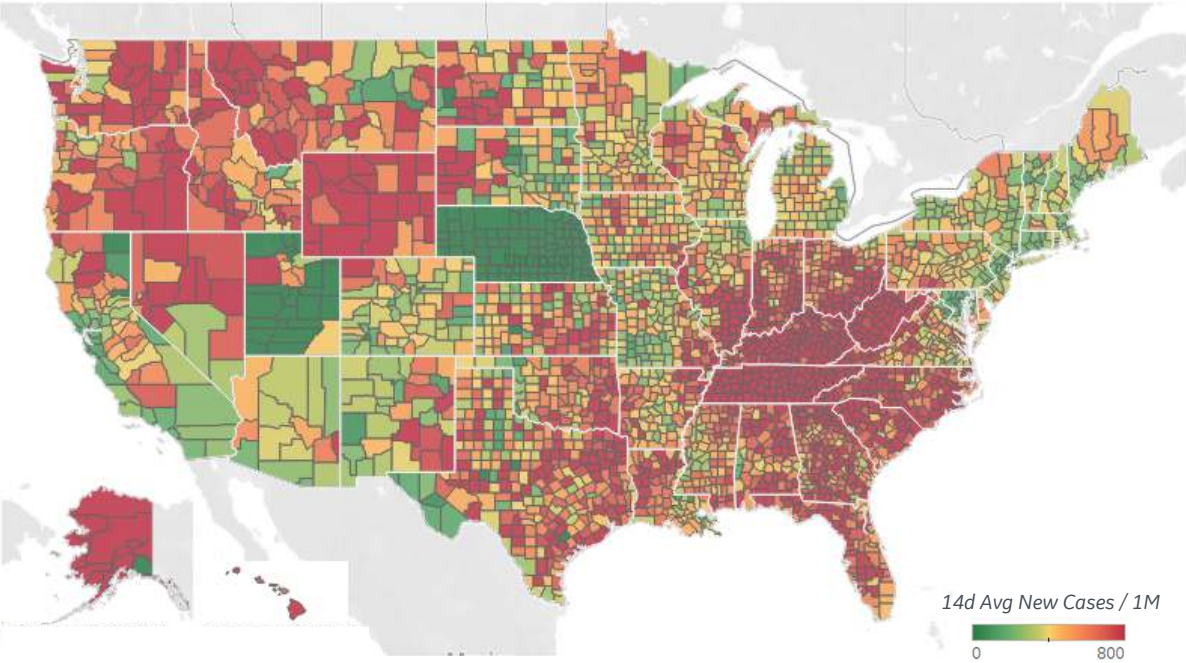






# US Counties: Recent Cases and Deaths

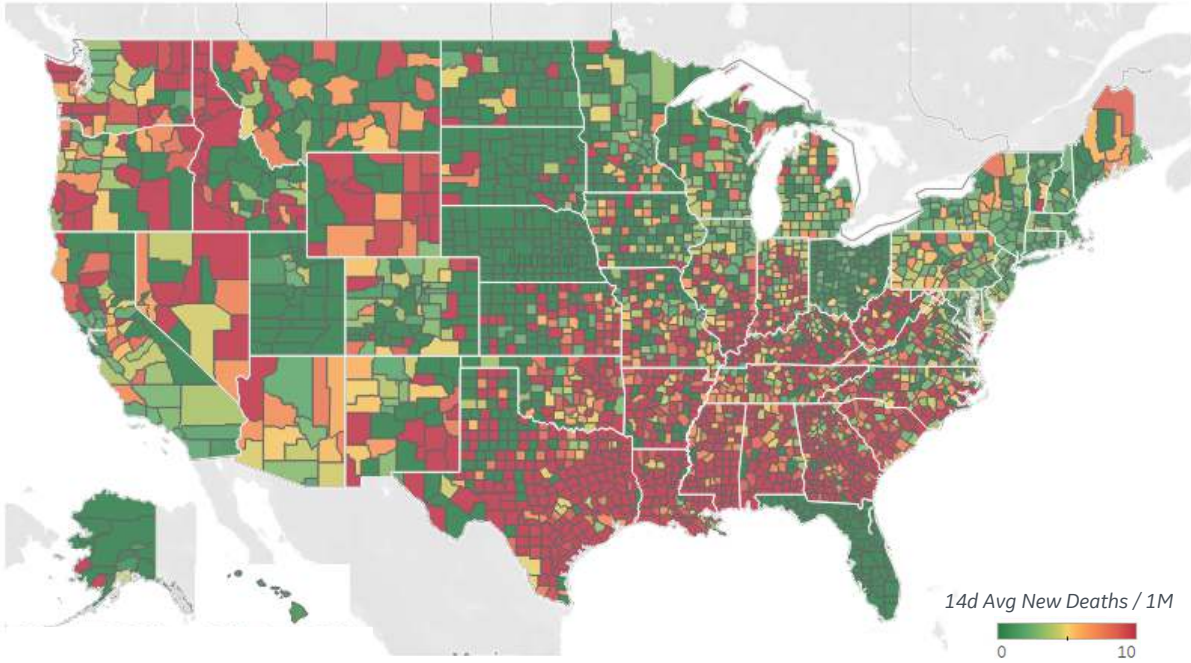
## Average New Cases per 1M Over Last 14 Days



### Top 10 by New Confirmed Avg New Confirmed Cases / 1M

Knox County, TN	1,362
Rutherford County, TN	1,282
Anchorage Municipality, AK	1,174
Spartanburg County, SC	1,067
McLennan County, TX	984
Lexington County, SC	941
Tarrant County, TX	927
Lubbock County, TX	920
Greenville County, SC	895
Hamilton County, TN	893

## Average New Deaths per 1M Over Last 14 Days



### Top 10 by New Deaths Avg New Deaths/ 1M

Mobile County, AL	19
Jefferson County, TX	17
Nueces County, TX	16
Spartanburg County, SC	15
Galveston County, TX	14
Lexington County, SC	13
Horry County, SC	13
McLennan County, TX	12
Montgomery County, TX	12
Spokane County, WA	12

Note: Lists includes counties ≥ 250K population \*Nebraska data not available

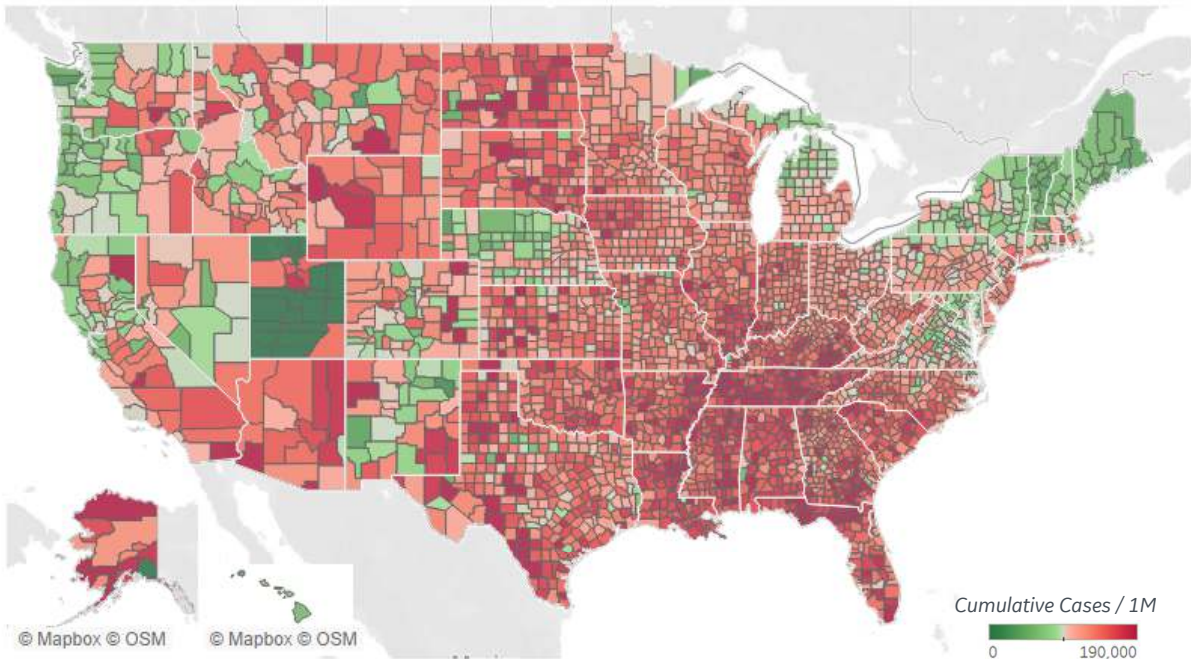
\*Nebraska data not available





# US Counties: Cumulative Cases and Deaths

## Confirmed **Cases** per 1M to date

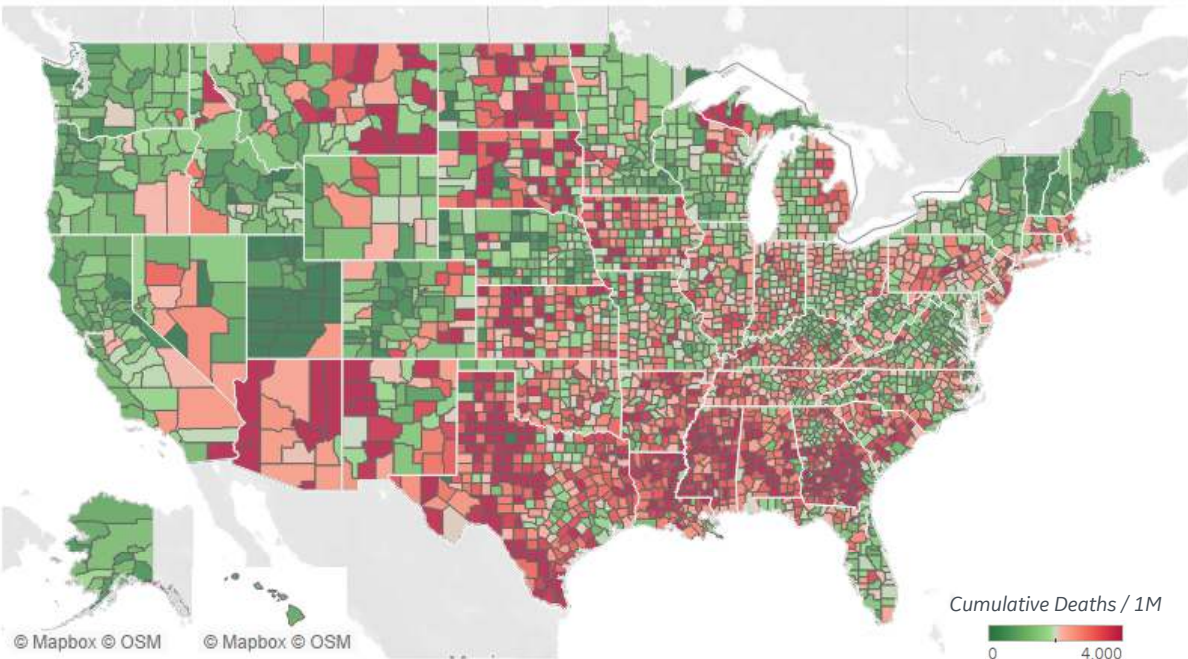


### Top 10 Counties

Total Confirmed Cases / 1M

Miami-Dade County, FL	241,628
Lubbock County, TX	199,968
Webb County, TX	199,106
Greenville County, SC	185,364
Osceola County, FL	184,000
Utah County, UT	181,337
Nueces County, TX	177,270
Spartanburg County, SC	176,806
Broward County, FL	176,777
Galveston County, TX	175,844

## Reported **Deaths** per 1M to date



### Top 10 Counties

Total Reported Deaths/ 1M

New York City*	6,356
Passaic County, NJ	3,944
Cameron County, TX	3,937
Essex County, NJ	3,895
Hidalgo County, TX	3,745
Ocean County, NJ	3,712
Union County, NJ	3,624
Hudson County, NJ	3,505
Hampden County, MA	3,416
El Paso County, TX	3,346

\* New York City counties aggregated into one reporting area



# Canada

..... Per 1M in Region .....

	Today	Change
Active Cases	41,399	+0.6%
Confirmed	238	+0.6%
Deaths	1	+0.2%
Recovered	27	+0.1%

..... Average Daily New Cases & Deaths per 1M Over Last 14 Days .....

	Cases	Deaths
Saskatchewan	370	2
Alberta	352	3
British Columbia	132	1
Quebec	87	0
Ontario	49	1
Manitoba	41	1

## Over Last 14 Days

Avg New Cases per 1M



Top 15 countries selected by 14-day avg new cases per 1M  
Excl. countries with population < 1M





# Central & South America

## Per 1M in Region

	Today	Change
Active Cases	76,254	+0.1%
Confirmed	71	+0.1%
Deaths	1	+0.1%
Recovered	64	+0.1%

## Average Daily New Cases & Deaths per 1M Over Last 14 Days

	Cases	Deaths
Cuba	713	7
Costa Rica	456	6
Jamaica	203	4
Guatemala	165	3
Trinidad and Tobago	138	4
Brazil	117	2
Honduras	98	3
Panama	76	1
El Salvador	66	2
Argentina	53	3
Uruguay	40	0
Venezuela	40	1
Colombia	32	1
Bolivia	29	1
Peru	26	1

Top 15 countries selected by 14-day avg new cases per 1M  
Excl. countries with population < 1M







# Brazil

## Per 1M in Region

	Today	Change
Active Cases	97,181	+0.0%
Confirmed	37	+0.0%
Deaths	1	+0.0%
Recovered	42	+0.0%

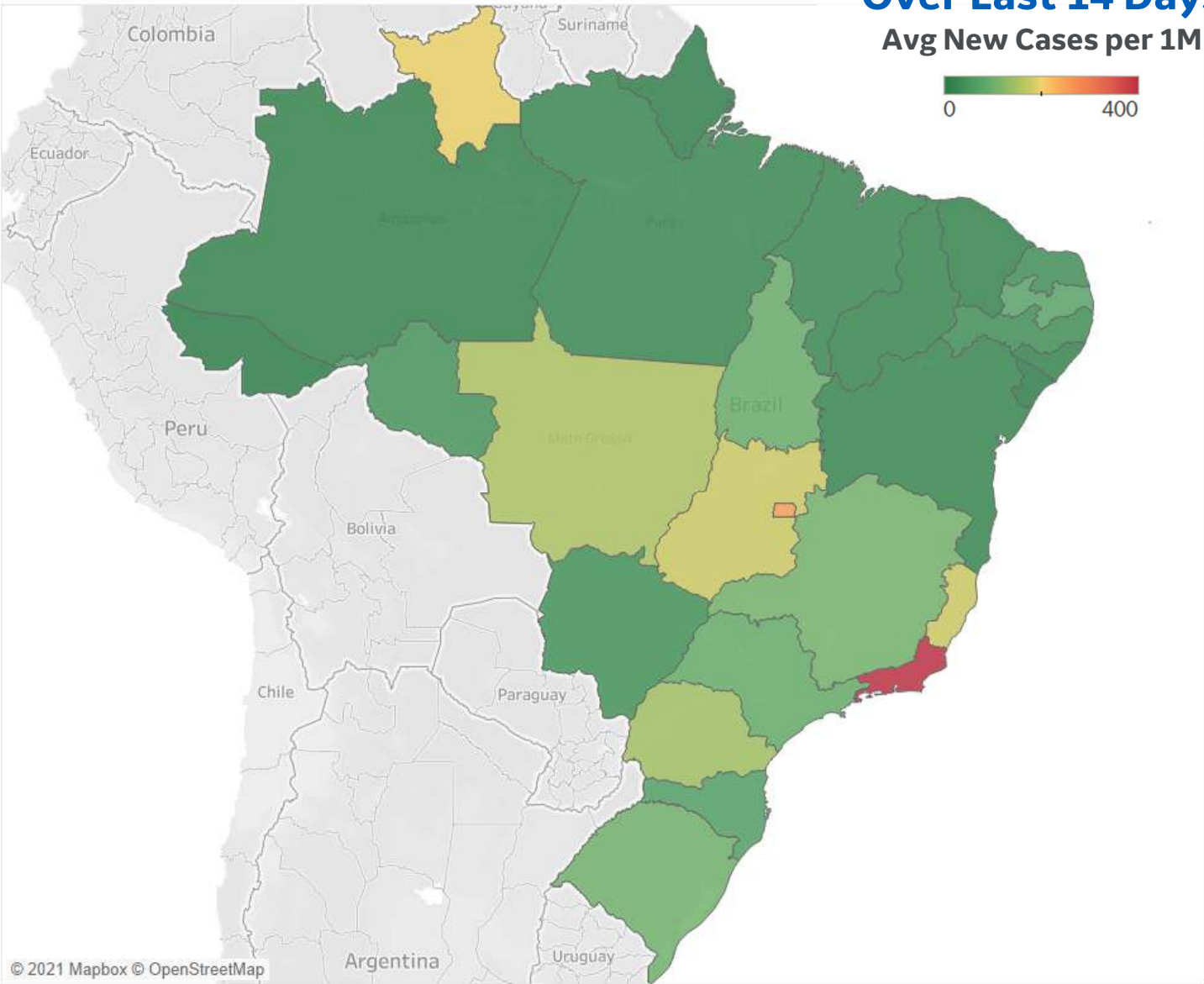
## Average Daily New Cases & Deaths per 1M Over Last 14 Days

	Cases	Deaths
Rio de Janeiro	543	7
Distrito Federal	250	4
Goiás	180	5
Espírito Santo	179	2
MatoGrosso	154	3
Paraná	144	4
Minas Gerais	107	3
Rio Grande do Sul	101	2
Tocantins	93	2
São Paulo	92	2
Paraíba	76	1
Santa Catarina	68	3
Rondônia	44	1
MatoGrosso do Sul	42	2
Rio Grande do Norte	40	1

Top 15 countries selected by 14-day avg new cases per 1M  
Excl. countries with population < 1M

## Over Last 14 Days

Avg New Cases per 1M





## Per 1M in Region

	Today	Change
Active Cases	13,670	+0.2%
Confirmed	29	+0.2%
Deaths	1	+0.3%
Recovered	34	+0.3%

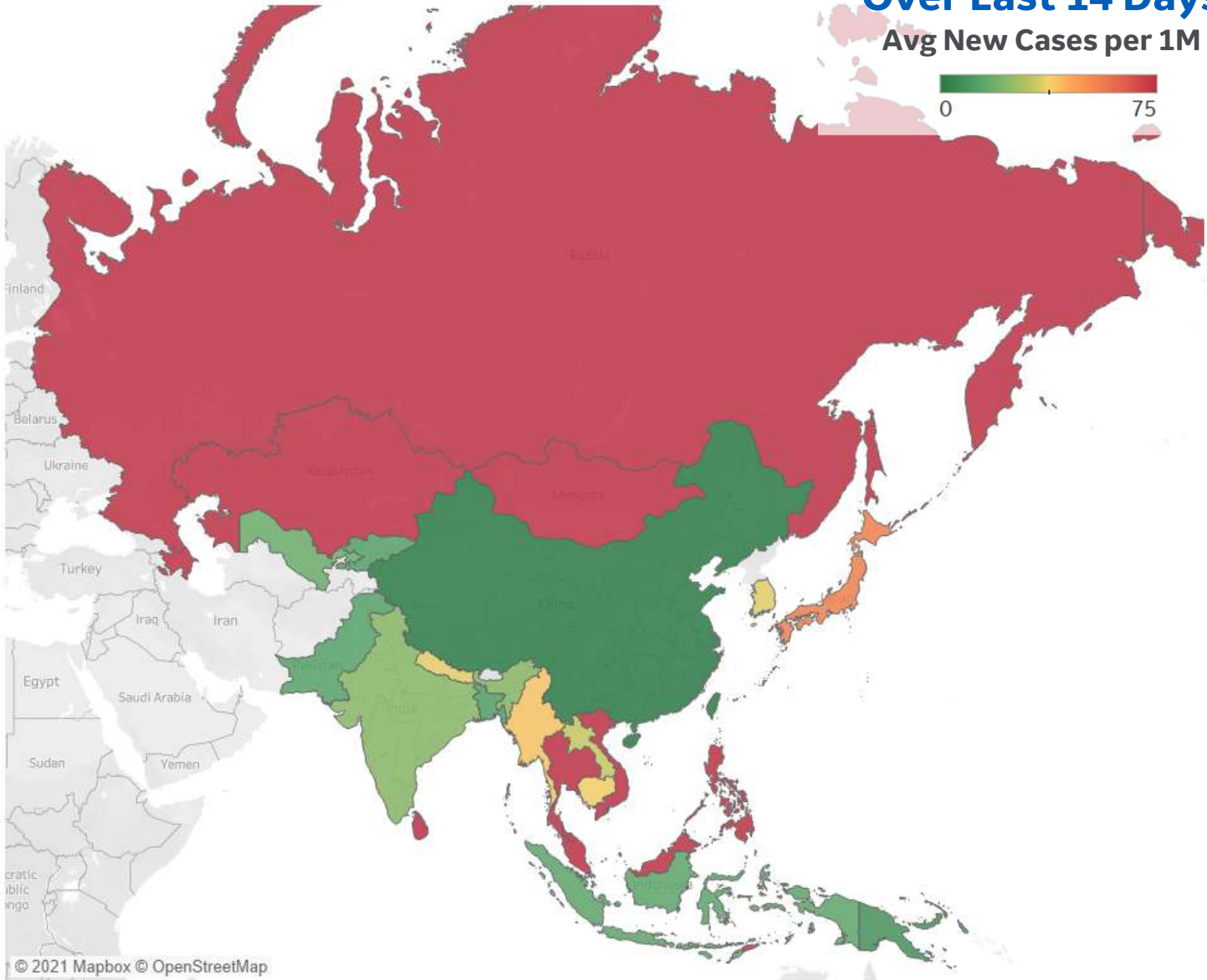
## Average Daily New Cases & Deaths per 1M Over Last 14 Days

	Cases	Deaths
Mongolia	913	3
Malaysia	552	12
Thailand	199	2
Azerbaijan	199	3
Philippines	184	2
Kazakhstan	180	4
Sri Lanka	134	6
Russia	127	5
Vietnam	117	3
Singapore	109	0
Timor-Leste	74	1
Japan	55	0
Myanmar	40	2
Cambodia	38	1
Nepal	36	0

Top 15 countries selected by 14-day avg new cases per 1M  
Excl. countries with population < 1M

## Over Last 14 Days

Avg New Cases per 1M





# Oceania

## Per 1M in Region

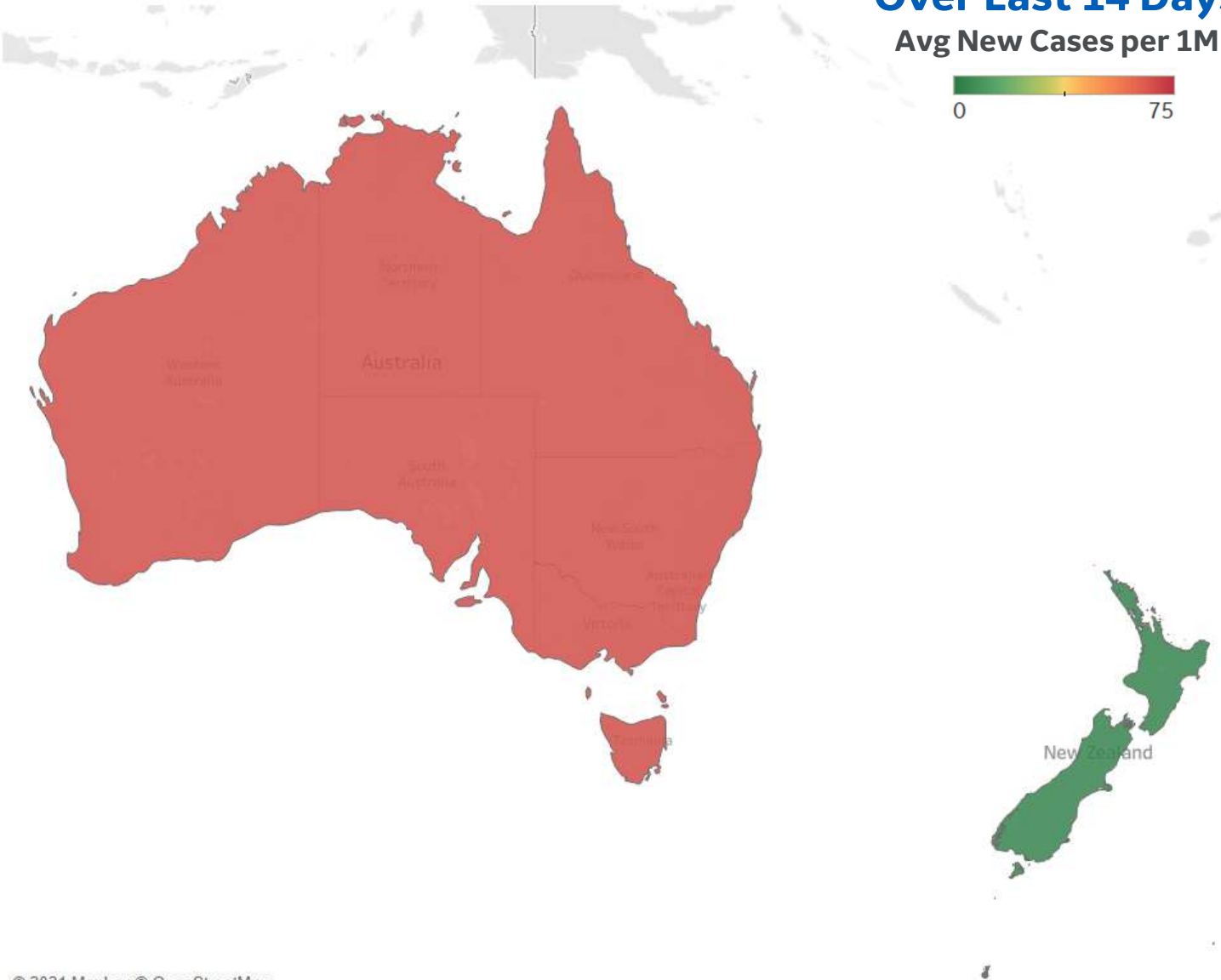
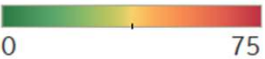
	Today	Change
Active Cases	4,516	+1.1%
Confirmed	51	+1.1%
Deaths	0.4	+0.6%
Recovered	51	+1.4%

## Average Daily New Cases & Deaths per 1M Over Last 14 Days

	Cases	Deaths
Australia	67	0
New Zealand	4	0

## Over Last 14 Days

Avg New Cases per 1M



Top 15 countries selected by 14-day avg new cases per 1M  
Excl. countries with population < 1M



# Africa

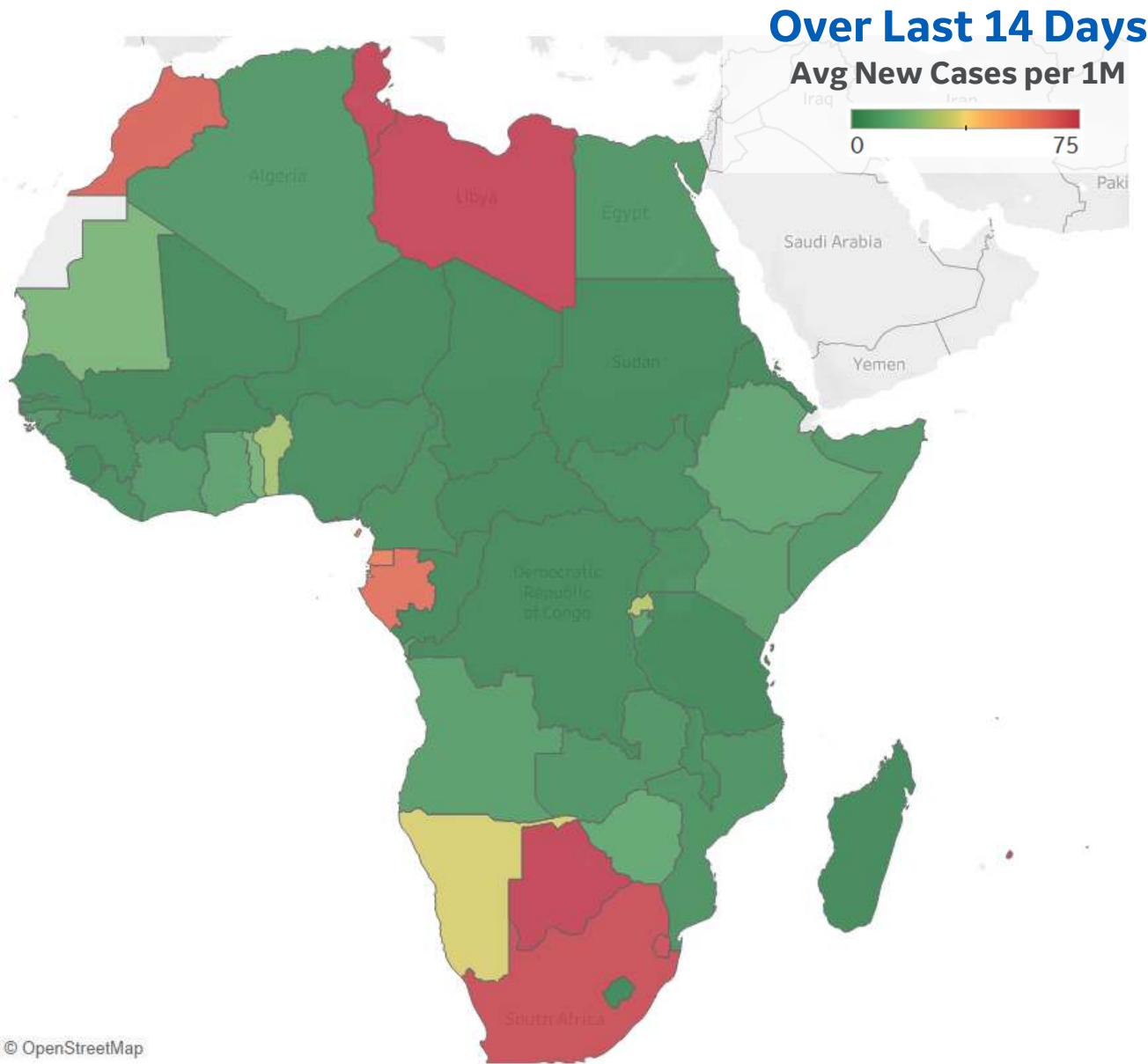
## Per 1M in Region

	Today	Change
Active Cases	5,954	+0.1%
Confirmed	8	+0.1%
Deaths	0.2	+0.2%
Recovered	13	+0.2%

## Average Daily New Cases & Deaths per 1M Over Last 14 Days

	Cases	Deaths
Botswana	352	1
Mauritius	184	2
Libya	158	2
Tunisia	152	4
South Africa	72	3
Eswatini	71	3
Morocco	67	2
Gabon	62	0
Eq. Guinea	57	0
Namibia	35	2
Rwanda	30	0
Benin	27	0
Mauritania	19	0
Togo	18	0
Zimbabwe	12	0

Top 15 countries selected by 14-day avg new cases per 1M  
Excl. countries with population < 1M







# Sources



\*\* Per 1M = Per 1 Million Population unless otherwise noted

Worldwide Survival Rate, last 30d calculation =  
[(Total Confirmed – Total Confirmed 30d ago) – (Total Deaths-Total Deaths 30d ago)] / (Total Confirmed – Total Confirmed 30d ago)

**Johns Hopkins Coronavirus Resource Center:**

<https://coronavirus.jhu.edu/map.html>

**Worldometer Coronavirus Reporting:**

<https://www.worldometers.info/coronavirus/>

**Public Health England:**

<https://www.gov.uk/government/publications/covid-19-track-coronavirus-cases>

**US Department of Homeland Security, Homeland Infrastructure Foundation-Level Data:**

<https://hifld-geoplatform.opendata.arcgis.com/datasets/hospitals>

**National Health Commission of the PRC:**

<http://www.nhc.gov.cn/xcs/yqtb/202003/bf66696029ba420098164607240074f8.shtml>

**CDC, Severe Outcomes Among Patients with Coronavirus Disease 2019 (COVID-19):**

<https://www.cdc.gov/mmwr/volumes/69/wr/mm6912e2.htm>

**Italian Department of Civil Protection, COVID Monitoring:**

<http://opendatadpc.maps.arcgis.com/apps/opsdashboard/index.html#/b0c68bce2cce478eaac82fe38d4138b1>

**The COVID Tracking Project:**

<https://covidtracking.com/data/>

**UK Office for National Statistics:**

<https://www.ons.gov.uk/peoplepopulationandcommunity/birthsdeathsandmarriages/deaths/bulletins/deathsregisteredweeklyinenglandandwalesprovisional/weekending24april2020>

**European Centre for Disease Prevention and Control:**

<https://www.ecdc.europa.eu/en/publications-data/download-data-hospital-and-icu-admission-rates-and-current-occupancy-covid-19>

**Secretary of Health, Mexico:**

<https://www.gob.mx/salud/en>

**Canada Regional Data:**

<https://health-infobase.canada.ca/covid-19/epidemiological-summary-covid-19-cases.html#fn1>

**Canada Regional Populations (Q4 2019):**

<https://www150.statcan.gc.ca/t1/tbl1/en/tv.action?pid=1710000901>

**CDC COVID Data Tracker:**

<https://covid.cdc.gov/covid-data-tracker/#vaccinations>

**Oxford COVID-19 Government Response Tracker:**

<https://www.bing.com/search?q=oxford+stringency+index+countries&PC=U316&FORM=CHROMN>

**U.S. Department of Health and Human Services**

<https://healthdata.gov/dataset/COVID-19-Reported-Patient-Impact-and-Hospital-Capa/4cnb-m4rz/data>